

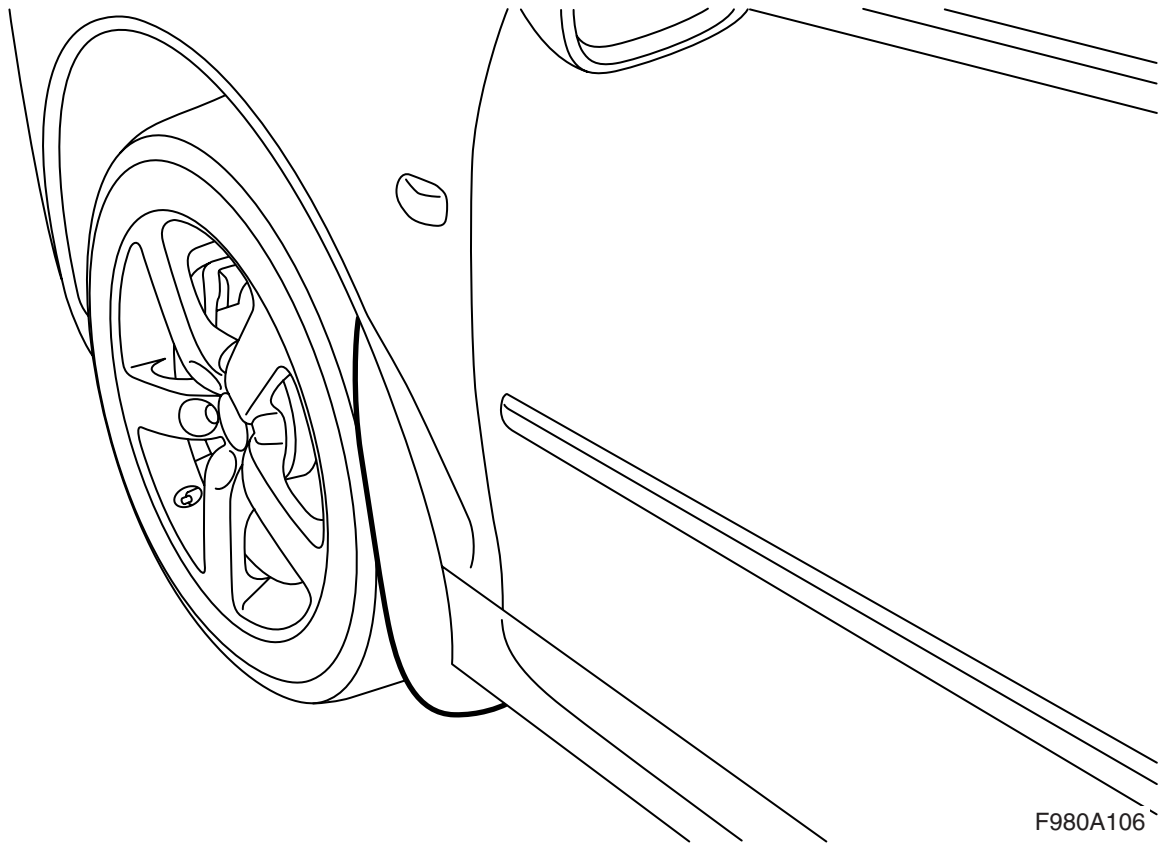


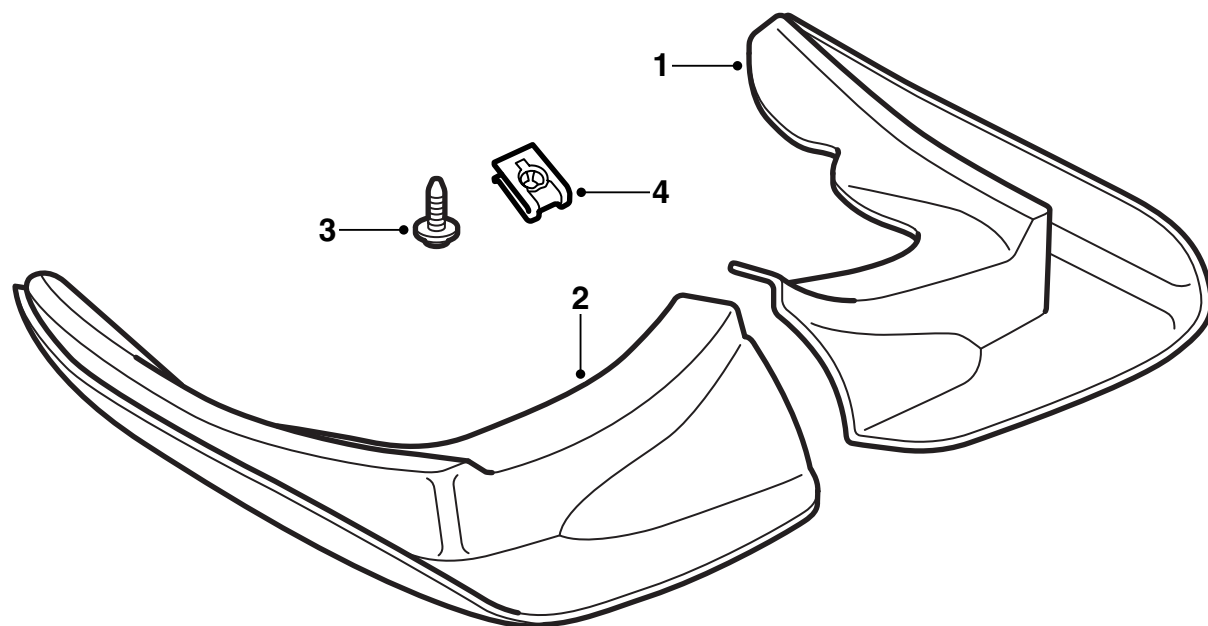
**MONTERINGSANVISNING · INSTALLATION INSTRUCTIONS
MONTAGEANLEITUNG · INSTRUCTIONS DE MONTAGE**

Saab 9-3 M03-

Splash guard, front

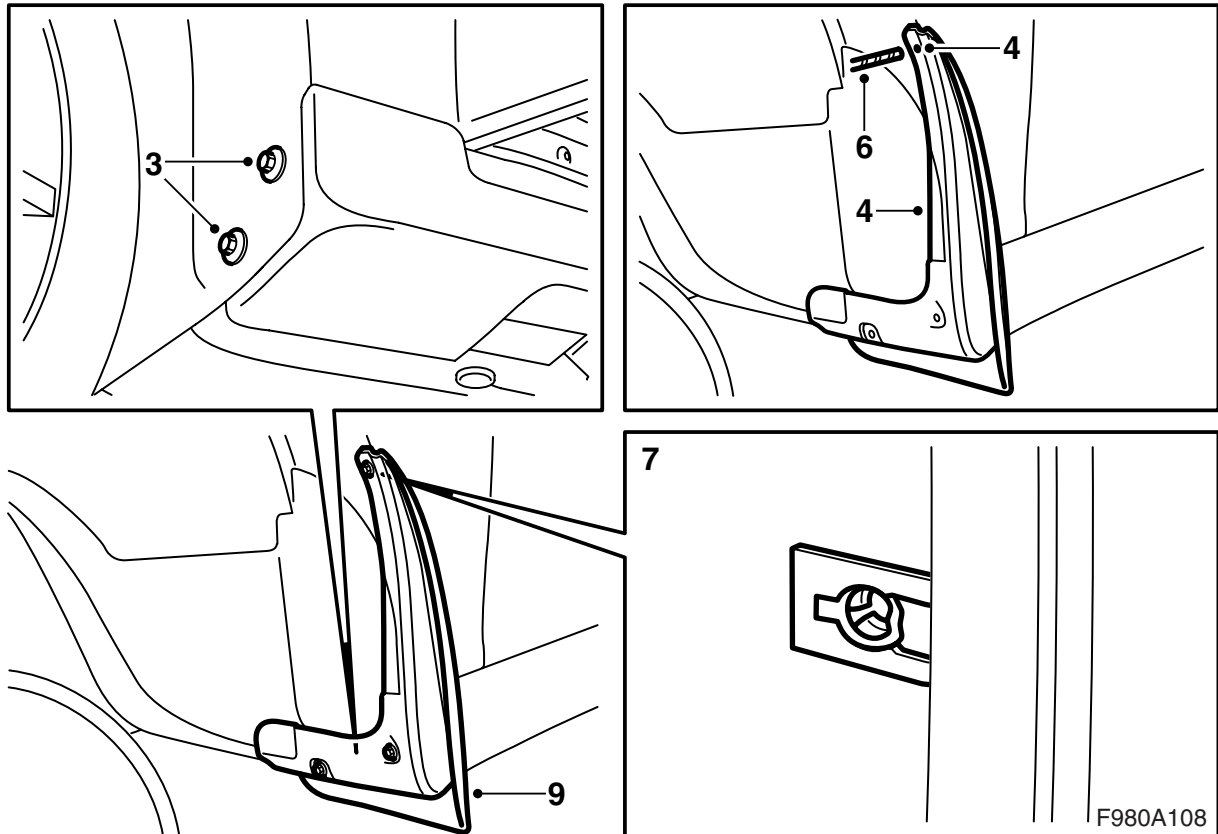
Accessories Part No.	Group	Date	Instruction Part No.	Replaces
12 786 784 12 831 787	9:84-19	Mar 03	12 798 021	12 798 021 Apr 02



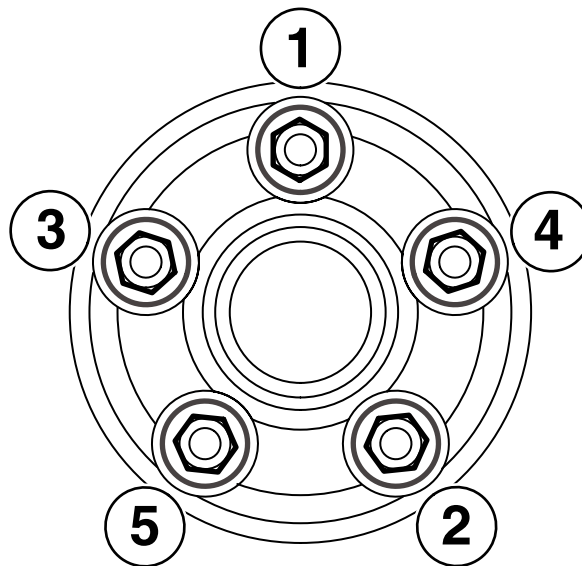
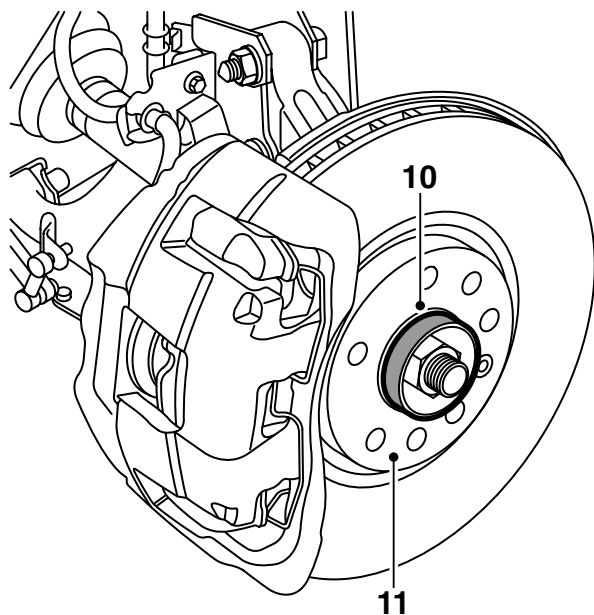


F980A107

- 1 Splash guard L
- 2 Splash guard R
- 3 Bolt (x6)
- 4 Clip nut (x2)



- 1 Raise the car.
- 2 Remove the front left wheel.
- 3 Remove the bolts in the lower part of the left-hand wheel housing's rear edge.
- 4 Align the splash guard. Press firmly in the correct position and mark the upper hole position.
- 5 Remove the splash guard.
- 6 Drill a 6 mm (0.25 in) hole in the location of the marking.
- 7 Fold out the wheel arch liner and fit a clip nut over the drilled hole.
- 8 Fit the wheel arch liner.
- 9 Fit the splash guard.



F980A109

- 10 Clean all dirt and rust from the contact surfaces of the wheel and brake disc.
- 11 Apply white high-pressure grease (part no. 30 06 442) to the hub.

Important

Make sure that no grease gets onto the contact surfaces of the wheel and brake disc.

- 12 Position the wheel, fit the bolts and tighten these in sequence by hand to centre the wheel.
- 13 Tighten the bolts in sequence twice.

Important

The wheel should be freely suspended during tightening.

Tightening torque

aluminium rim 110 Nm (81 lbf ft)

pressed steel rim 50 Nm +2x90°, max 110 Nm (37 lbf ft +2x90°, max 81 lbf ft)

Note

In order to avoid the bolts being tightened too hard when fitting pressed steel wheels, tightening through a further quarter-turn must be carried out using a torque wrench set at 110 Nm (81 lbf ft). If the torque wrench indicates that 110 Nm (81 lbf ft) is achieved, discontinue tightening through a further quarter-turn.

- 14 Repeat steps 2-13 on the right side of the car and lower the car.