

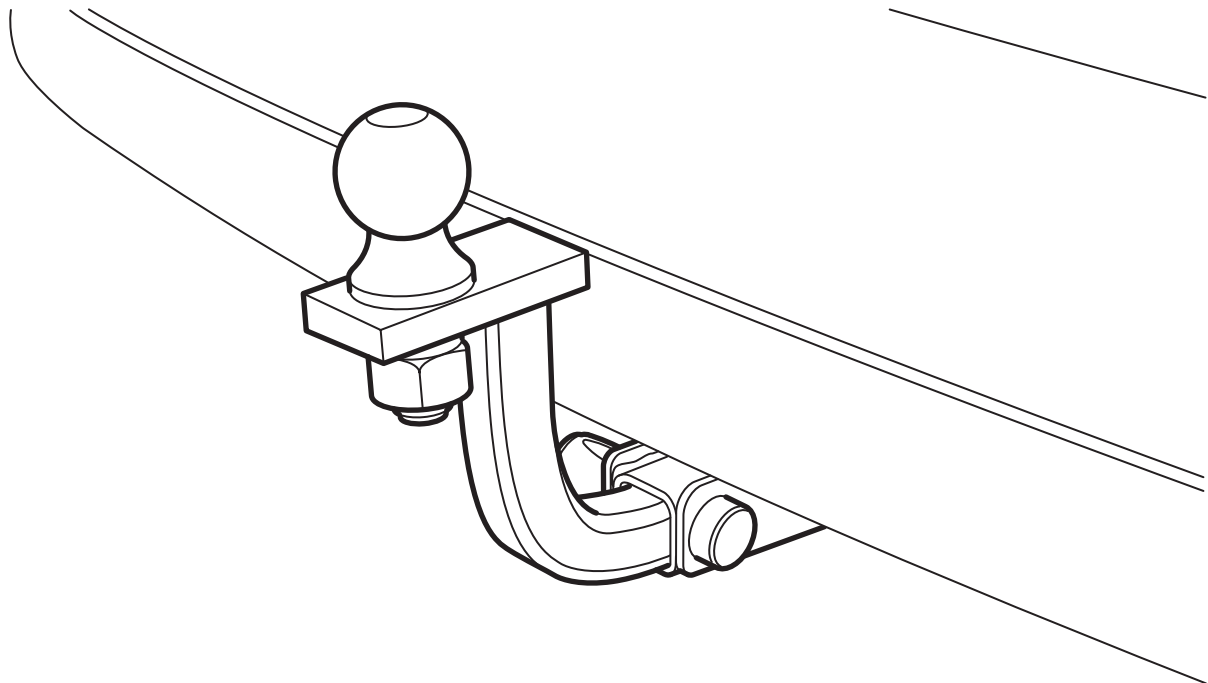


**MONTERINGSANVISNING · INSTALLATION INSTRUCTIONS  
MONTAGEANLEITUNG · INSTRUCTIONS DE MONTAGE**

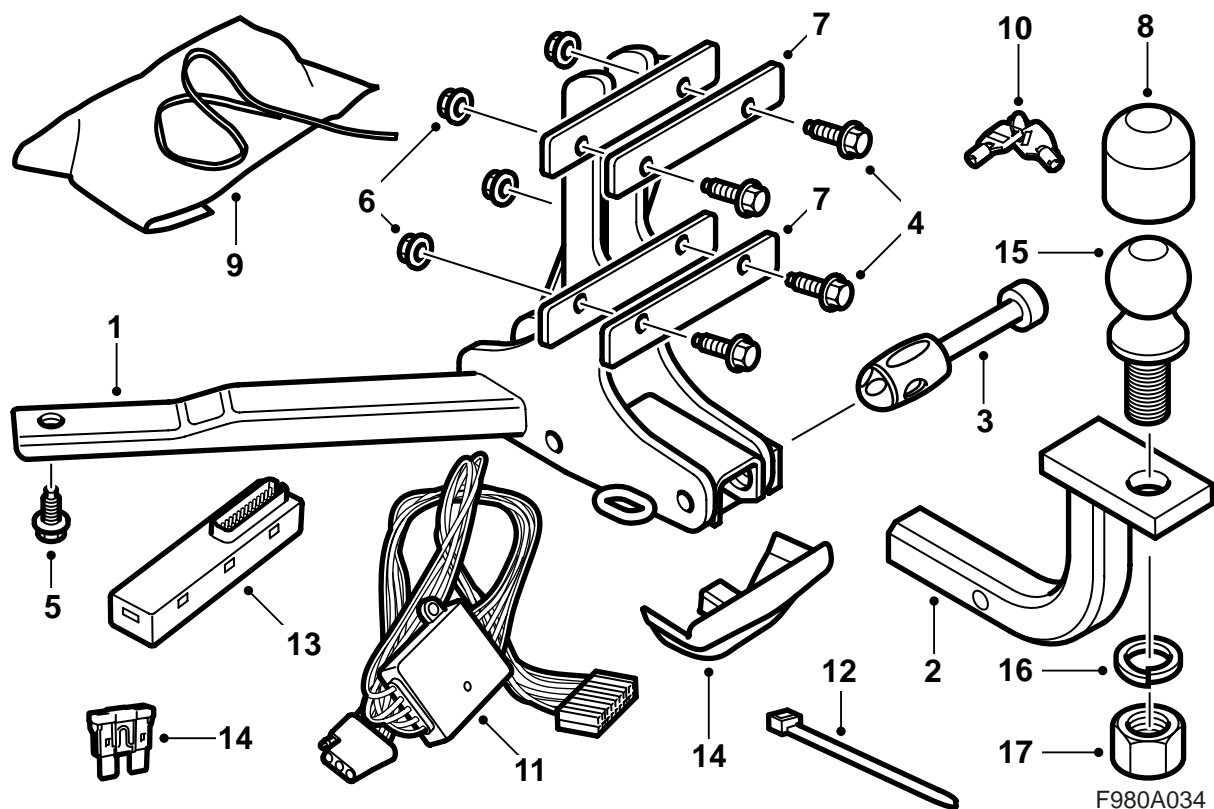
## Saab 9-3 M03-

### Towbar

Accessories Part No.	Group	Date	Instruction Part No.	Replaces
<b>12 786 789 12 798 348</b>	<b>9:86-04</b>	<b>May 04</b>	<b>12 797 883</b>	<b>12 797 883 Apr 03</b>



F980A033



- 1 Body bracket
- 2 Ball mounting
- 3 Locking pin
- 4 Bolt (x4)
- 5 Screw (x2)
- 6 Nut (x4)
- 7 Reinforcement plate (x2)
- 8 Ball cap
- 9 Storage bag
- 10 Key (x2)
- 11 Wiring harness with diode box
- 12 Cable tie (x4)
- 13 Electronic module
- 14 Cover
- 15 Ball
- 16 Spring washer
- 17 Nut

#### Note

Always check national legislation and regulations regarding mounting a towing bracket. Ensure that all requirements are complied with.

The towing bracket was designed and tested in accordance with standard V-5 Class 2.

#### Maximum permitted trailer weight:

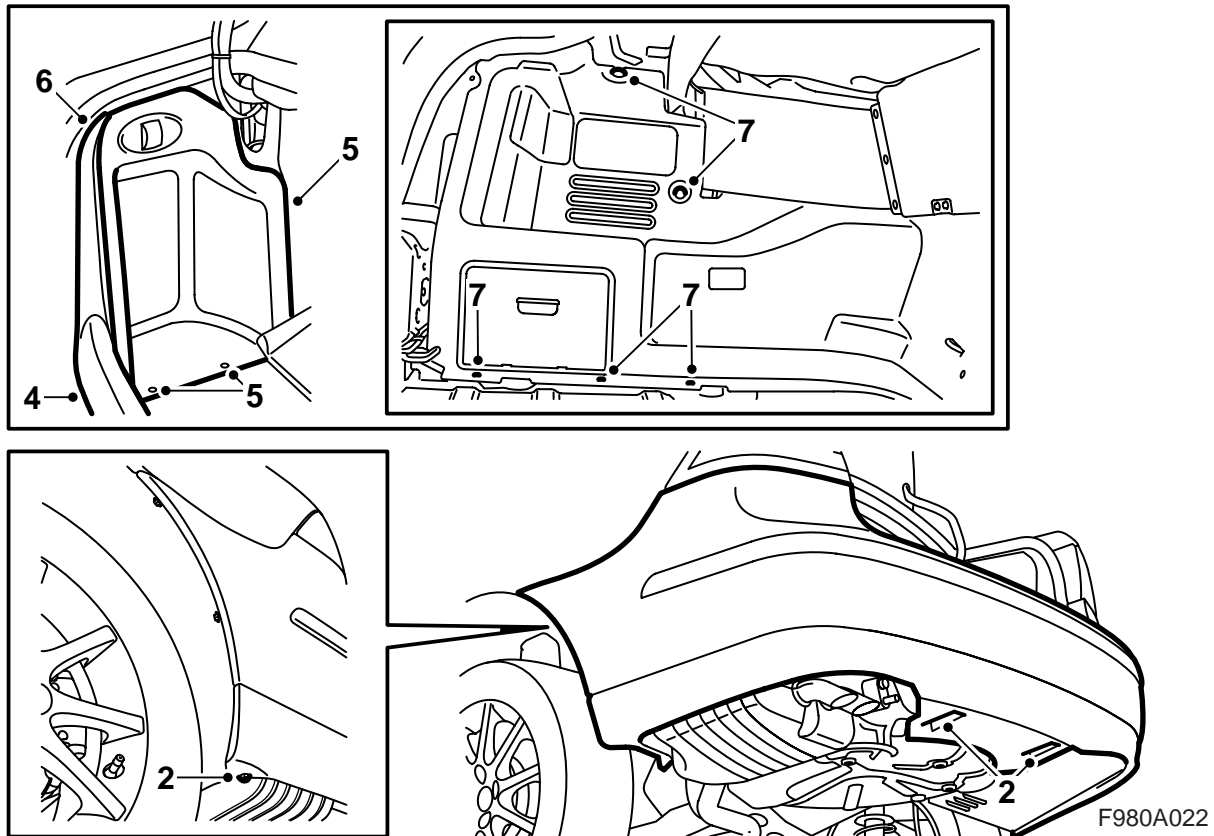
Trailer with brake: 3500 lbs (1587 kg)

Trailer without brake: 1000 lbs (455 kg)

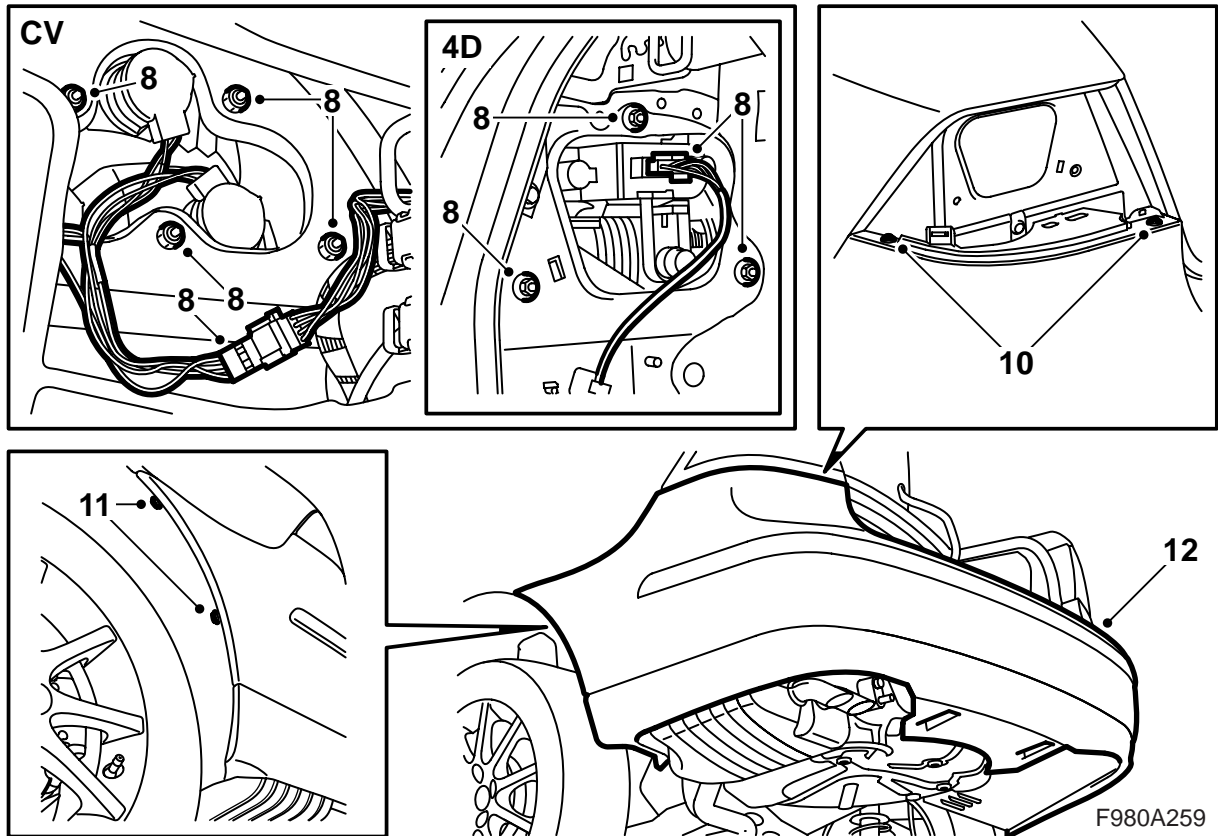
**Max. permissible ball pressure:** 165 lbs (75 kg)

#### Important

The wiring harness must be connected following the description in these installation instructions. This is a requirement. If the wiring harness is connected in any other way, it could negatively affect the car's electrical system.

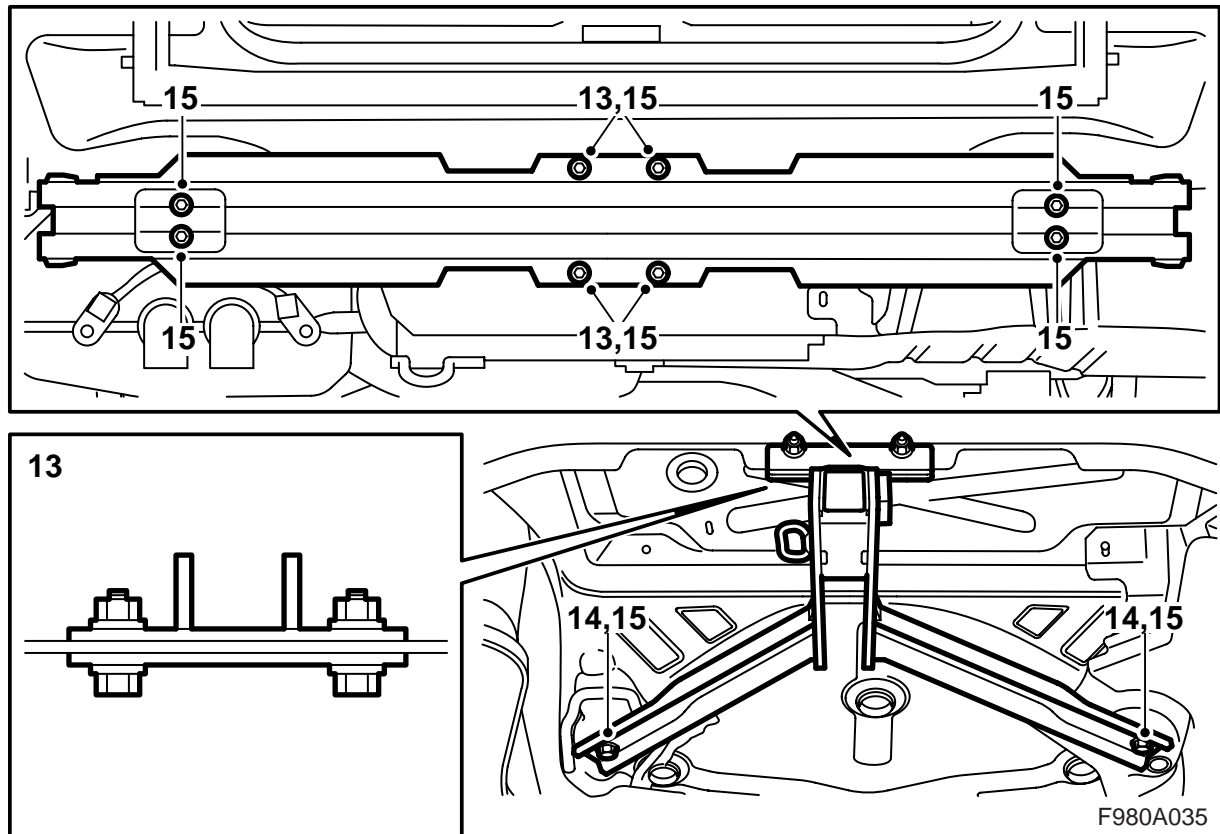


- 1 Raise the car.
- 2 Remove the two nuts holding the rear bumper air shield against the body and the two bolts holding the bumper shell against the wheel housings.
- 3 Lower the car and open the boot lid.  
**CV:** Remove the carpet on the luggage compartment floor.
- 4 Remove the luggage compartment scuff plate.
- 5 **4D:** Remove the hatch in the luggage compartment left-hand side trim and lower the hatch on the right-hand side.
- 6 Remove the side scuff plate on the left-hand side.
- 7 Remove the clips for the left-hand side trim and fold the trim aside.  
**CV:** Unhook the strap on the rear side of the side trim and remove the connector from the luggage compartment lighting. Remove the side trim.



F980A259

- 8 Remove the rear lamp clusters.
- 9 **SPA:** Unplug the connector.
- 10 Remove the bumper shell bolts that are located below the rear lamp clusters.
- 11 Remove the bumper bolts at the wheel housings.
- 12 Remove the bumper shell by pulling the sides outwards and then pulling the bumper shell rearwards.

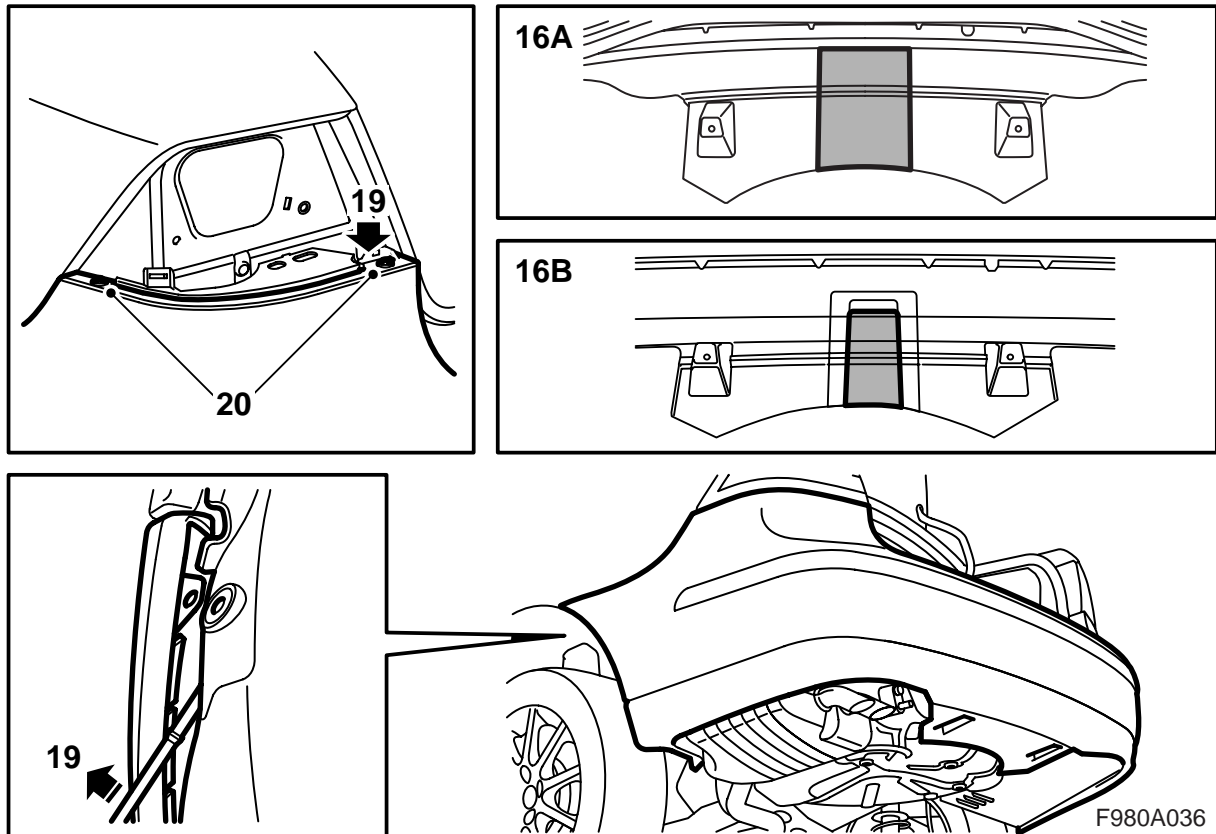


- 13 Mount the towing bracket using bolts and nuts together with the reinforcements in the four bumper member holes and raise the car.
- 14 Fasten the towing bracket in the floor under the spare wheel well.
- 15 Tighten the bumper member mountings against the body as well as the screws, bolts and nuts holding the towing bracket against the bumper member and floor.

**Tightening torque, bumper member against body 50 Nm (37 lbf ft)**

**Tightening torque, towing bracket against bumper member 50 Nm (37 lbf ft)**

**Tightening torque, towing bracket against floor 50 Nm (37 lbf ft)**



- 16 Use a universal knife with a hooked blade to cut a hole for the towbar in the bumper shell (a jig saw can also be used).

**! WARNING**

Exercise caution when using a saw or knife as this may cause injury.

The cut-out should be made within the reinforcing grooves.

**Cars without bumper skirt (A):** There is only one marking.

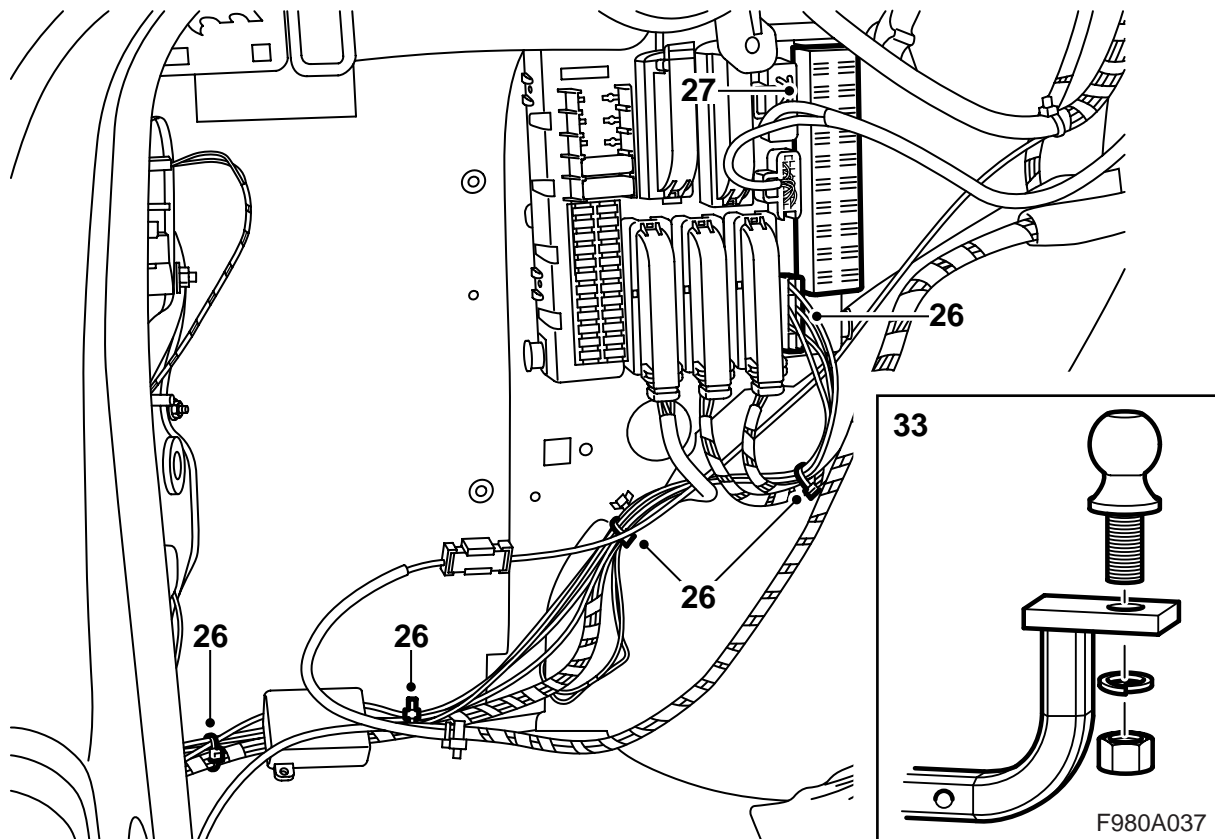
**Cars with bumper skirt (B):** There are three markings. Use the marking indicated in the illustration.

- 17 Lower the car.  
 18 **SPA:** Insert and plug in the connector.  
 19 Fit the two tabs of the bumper shell under the holes and the outer corners between the wheel arch liner and the holder at the wheel housings. Press the bumper shell into place.  
 20 Fit the bumper shell bolts that are located below the rear lamp clusters.  
 21 Fit the bumper bolts at the wheel housings.  
 22 Fit and connect the rear lamp clusters. Check the fit against the boot lid moulding.  
 23 Raise the car.

- 24 Fit the two nuts holding the rear bumper air shield against the body and the two bolts holding the bumper shell against the wheel housings.

**4D:** Continue with step 25.

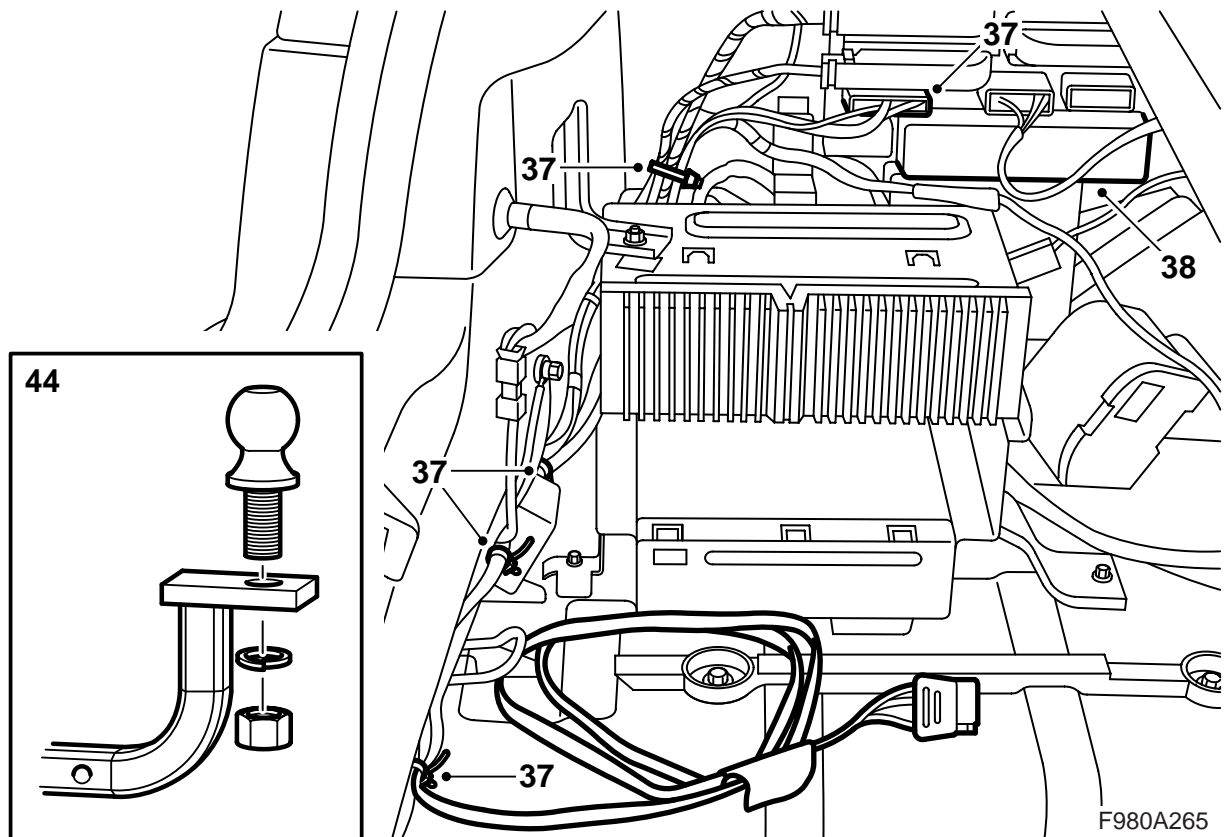
**CV:** Continue with step 36.

**4D**

- 25 Lower the car and run the wiring harness along the other wiring harnesses towards the left-hand side of the car and to the rear electrical distribution box.
- 26 Plug the wiring harness connector into the rear electrical distribution box and secure the wiring harness with 4 cable ties.
- 27 Fit the kit's electronic module in the rear electrical distribution box.
- 28 Fit the left-hand side trim.
- 29 Fit the side scuff plate on the left-hand side.
- 30 Fit the scuff plate.
- 31 Fit the hatches in the side trims of the luggage compartment.
- 32 Fit the ball mounting, see "User instructions".
- 33 Fit the ball to the mounting.

**Tightening torque 180 Nm (133 lbf ft)**

- 34 Check the fit of the bumper. Adjust as necessary.
- 35 Carefully remove the page regarding fitting and removing the ball unit and give it to the customer together with the installation instructions.



#### CV

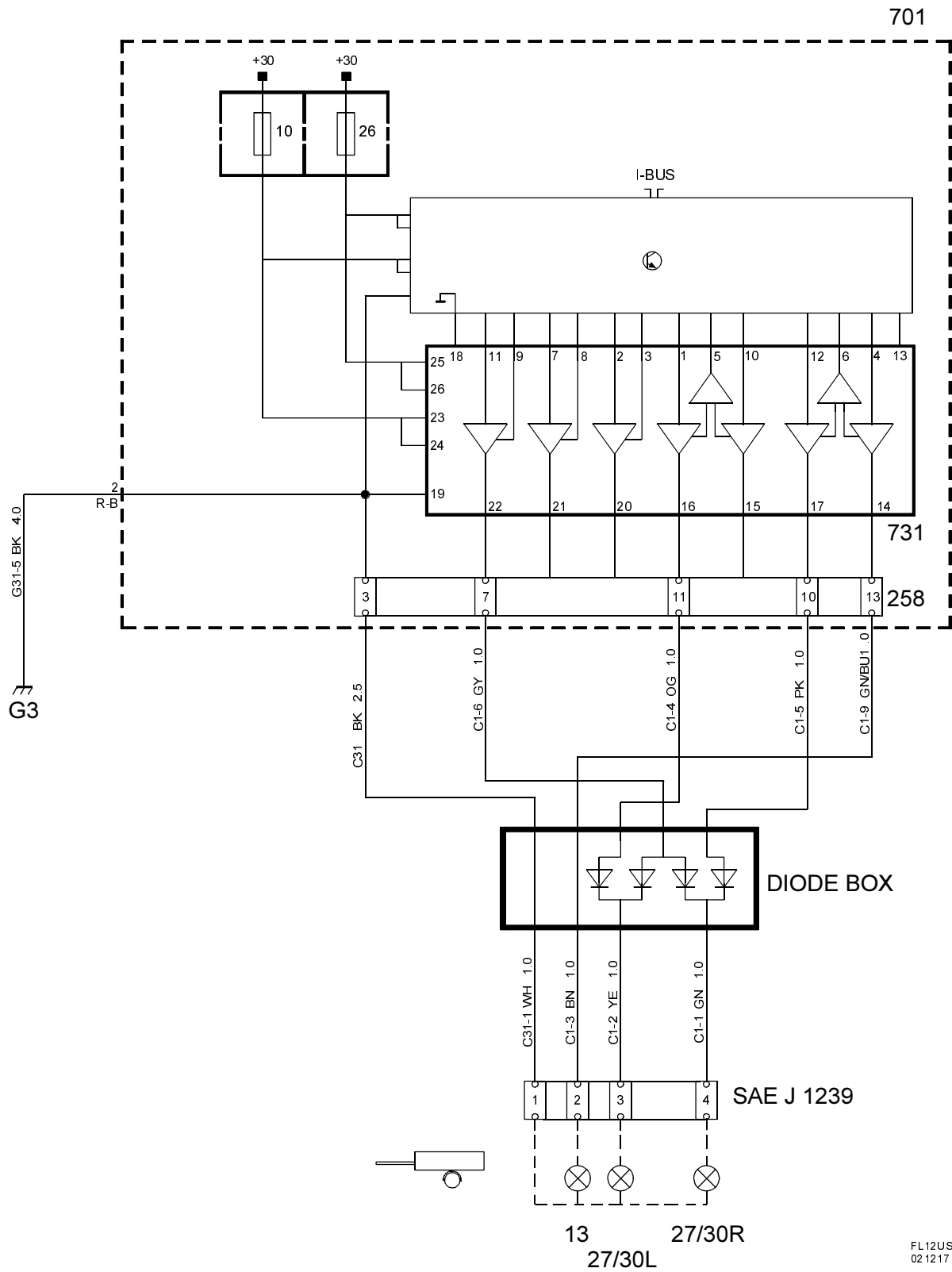
- 36 Lower the car and run the wiring harness along the other wiring harnesses towards the left-hand side of the car and to the rear electrical distribution box.
- 37 Plug the wiring harness connector into the rear electrical distribution box and secure the wiring harness with 4 cable ties.
- 38 Fit the kit's electronic module in the rear electrical distribution box.
- 39 Fit the left-hand side trim. Connect the luggage compartment lighting and hook the strap on.
- 40 Fit the side scuff plate on the left-hand side.
- 41 Fit the scuff plate.
- 42 Fit the carpet on the luggage compartment floor.
- 43 Fit the ball mounting, see "User instructions".
- 44 Fit the ball to the mounting.

#### **Tightening torque 180 Nm (133 lbf ft)**

- 45 Check the fit of the bumper. Adjust as necessary.
- 46 Carefully remove the page regarding fitting and removing the ball unit and give it to the customer together with the installation instructions.



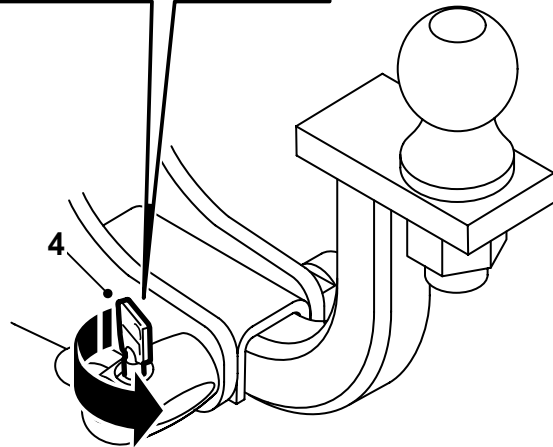
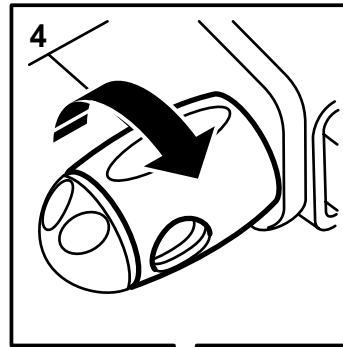
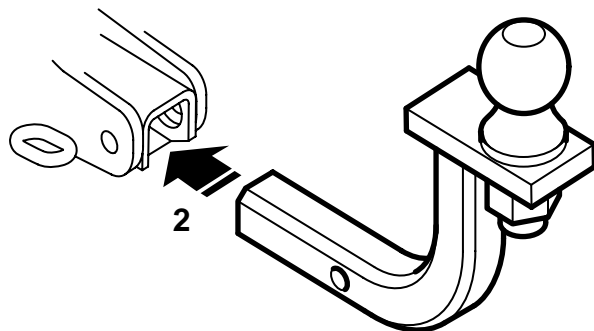
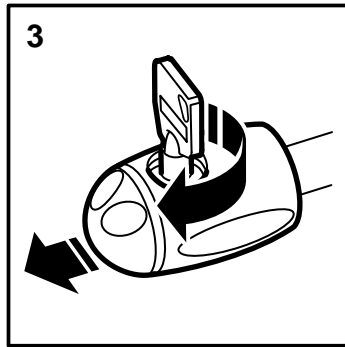
Wiring diagram



FL12US  
02 12 17

**List of components**

<b>No.</b>	<b>Name position</b>
<b>Components</b>	
13	Lamp, parking light, trailer
27/30	Lamp, direction indicators/brake lights, trailer
258	Connector, towbar wiring harness, in the luggage compartment electrical distribution unit
701	Luggage compartment electrical distribution unit, on the wall behind the left rear wheel housing
731	Trailer control module, in the luggage compartment electrical distribution unit
<b>Grounding points</b>	
G3	In the luggage compartment below the left light cluster



F980A038

## User instructions

(keep in the car's Owners Manual)

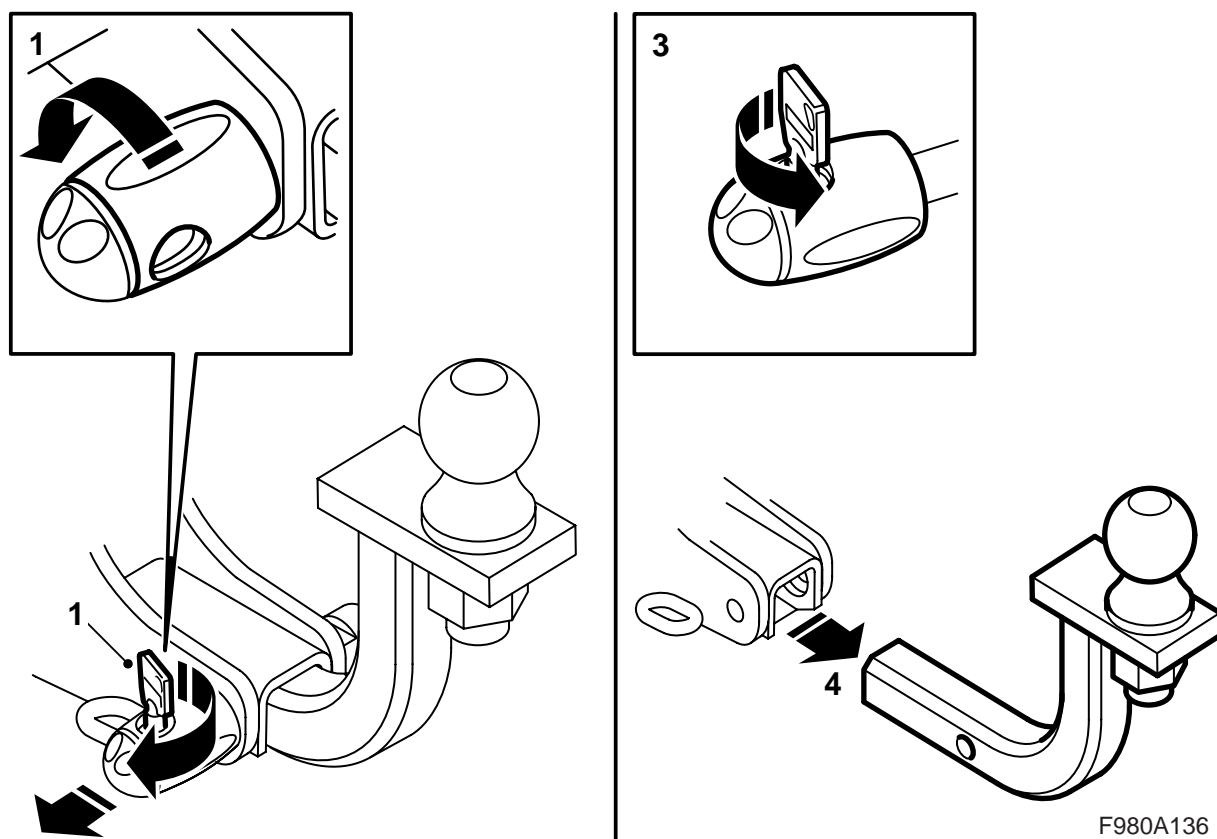
### WARNING

To ensure that the towbar is coupled **correctly and safely**:

- The coupling mechanism must **always** be kept well lubricated. Contact your nearest Saab dealer regarding a suitable grease.
- **Always** fitted the protective cover when the towball unit is not attached.
- It must **always** be possible to detach and attach the towball unit without it jamming.

## To attach the towball unit

- 1 Remove the cover.
- 2 Fit the ball unit.
- 3 Insert the key in the pin's lock, turn it clockwise and remove the pin's lock.
- 4 Insert the pin into the towing bracket hole and fit the lock to the pin. Turn the key anticlockwise to lock the pin and then remove the key. Turn the lock sleeve to hide and protect the lock.



#### To detach the towball unit

- 1 Turn the sleeve to access the lock. Insert the key, turn it clockwise and remove the pin's lock.
- 2 Pull out the pin.
- 3 Fit the lock on the pin, turn the key anticlockwise and remove it.
- 4 Remove the ball unit.
- 5 Fit the cover.

When the towbar is not in use, the wiring harness must be stored in the following location:

**4D:** Behind the hatch in the left-hand side trim.

**CV:** Beside the spare wheel in the spare wheel well.