

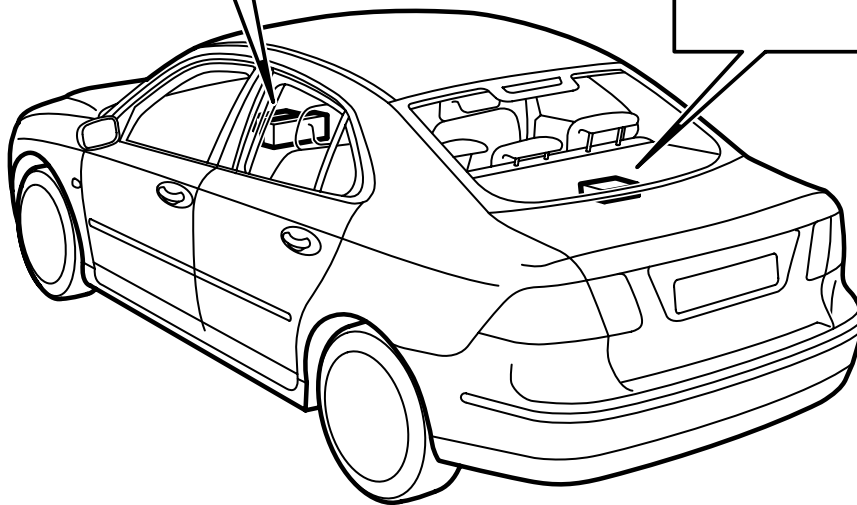
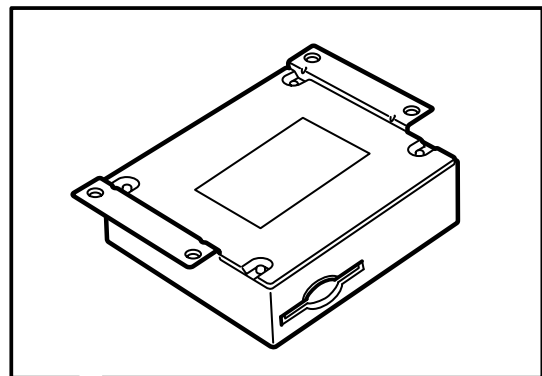
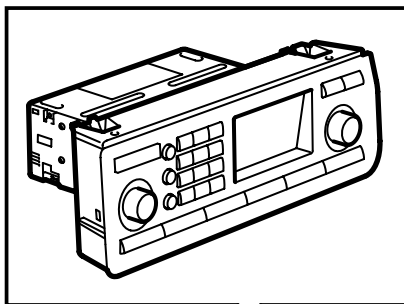


**MONTERINGSANVISNING · INSTALLATION INSTRUCTIONS
MONTAGEANLEITUNG · INSTRUCTIONS DE MONTAGE**

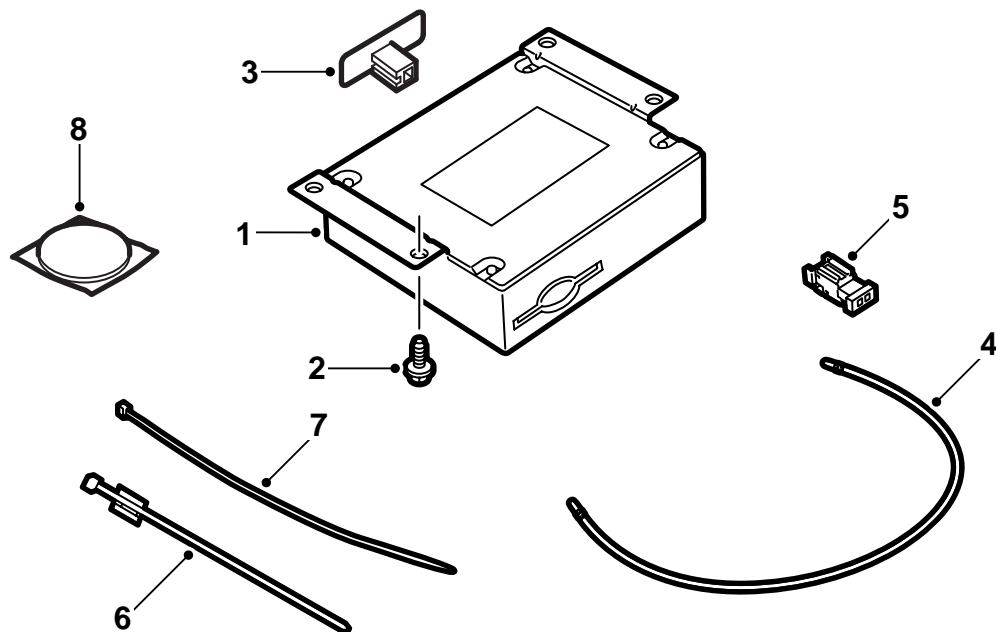
Saab 9-3 4D M03-

Integrated telephone

Accessories Part No.	Group	Date	Instruction Part No.	Replaces
12 787 156	9:39-12	Oct 03	12 788 466	



F930A145

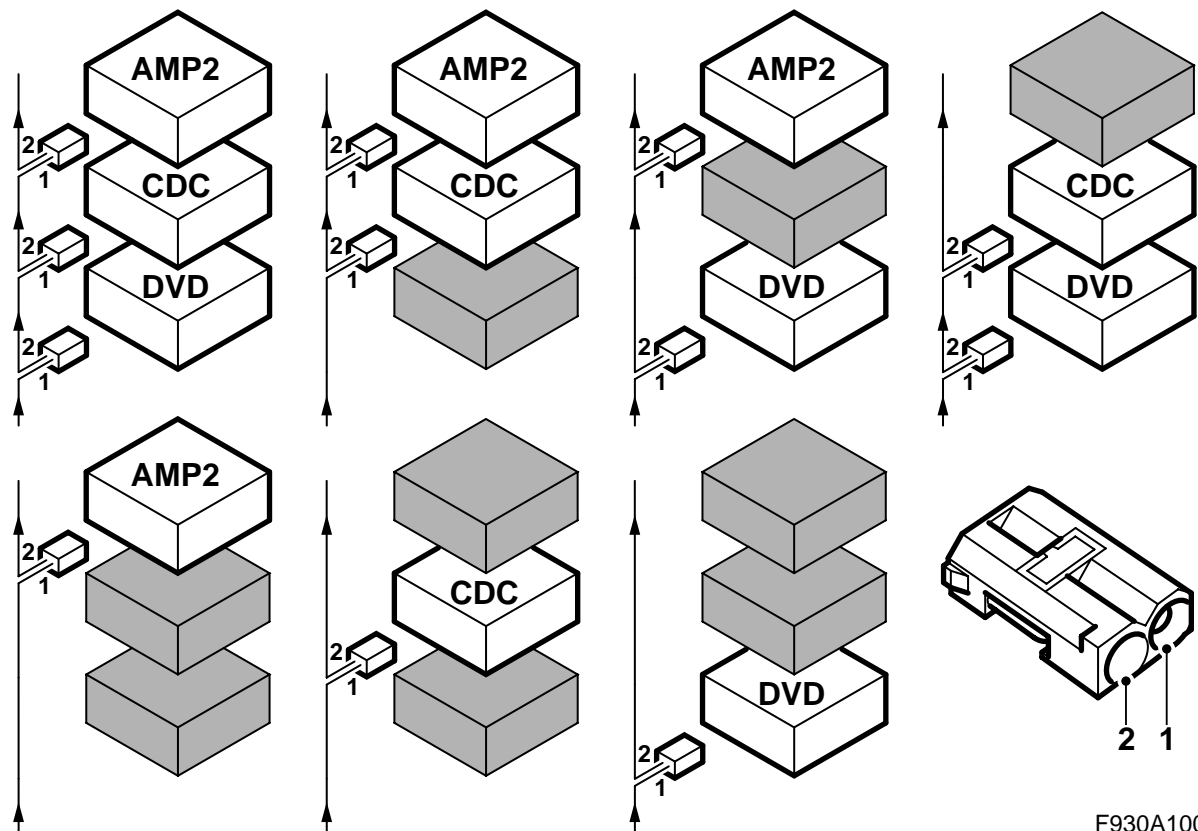


F930A146

- 2 Bolt (x4)
- 3 Antenna, Bluetooth
- 4 Fibre optic cable
- 5 Connector, optical cable, 2-pin
- 6 Cable tie (x2)
- 7 Cable tie (x2)
- 8 Plastic foam tape

In addition, the following items are required (ordered separately)

- Telematics unit (no. 1)
- Wiring harness (certain cars)
- Antenna cable GPS/GSM (certain cars)
- Antenna cable GSM (certain cars)
- Control panel (certain cars)
- Steering wheel with switch (certain cars)



F930A100

Bus Communication

Many parts of the car's electrical system communicate using a bus. There are three types of bus communication: P-bus (Powertrain Bus), I-bus (Instrument Bus) and O-bus (Optical bus). The audio system communicates via the O-bus together with the navigation system, the telephone system and others.

The O-bus is optical and is a ring bus. Two fibre optical cables are connected to each control module on the bus, one fibre optical cable for receiving and one for sending. Messages received are converted by each control module from a fibre optic signal to electrical and then converted back to optical for sending. The O-bus data transfer rate is 25 Mbit/s.

Important

It is very important that everything connected to the O-bus is connected in a specific order, see illustration, and that the ring is closed the whole time.

Connection in any other way than that described in these fitting instructions may result in several of the car's systems failing to work.

AMP1 is an amplifier below the left-hand front seat

AMP2 is an amplifier by the REC

CDC is a CD changer by the REC

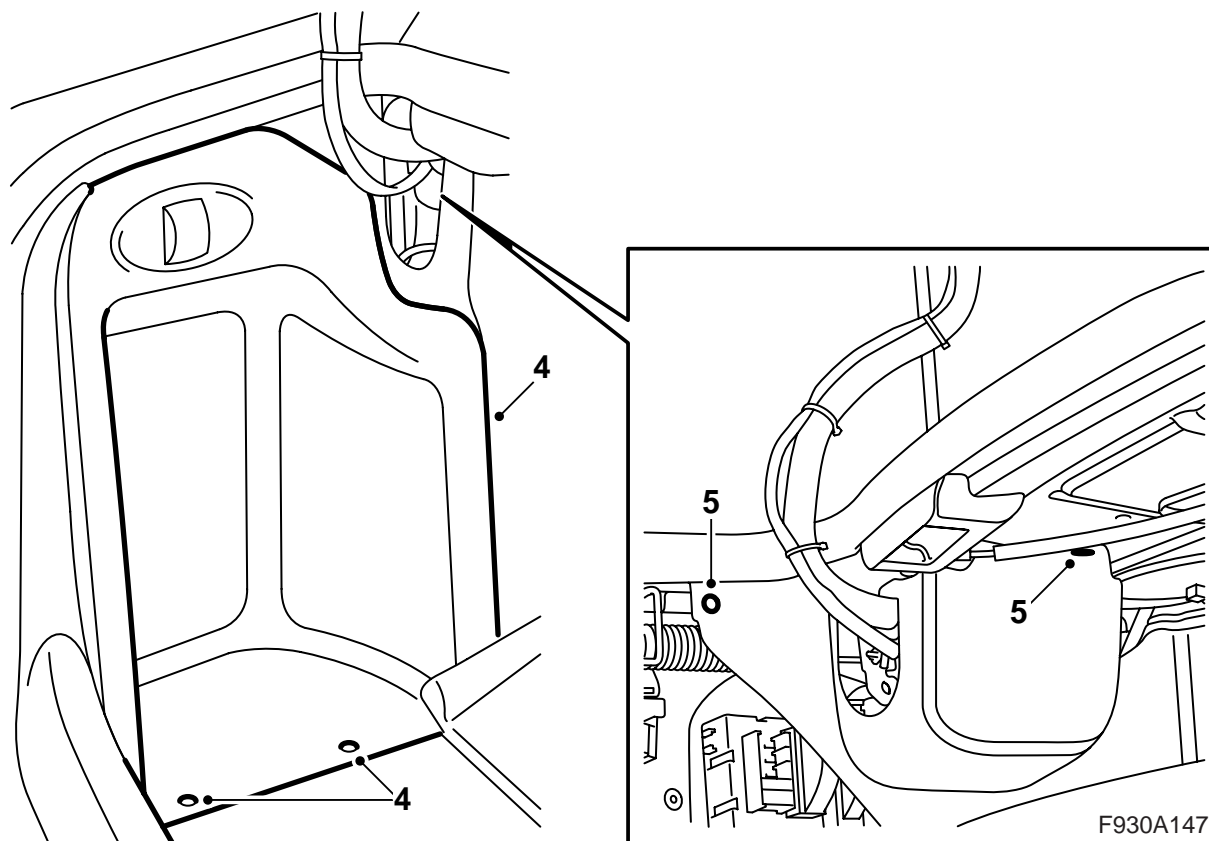
DVD is a DVD player by the REC

When fitting new equipment to be connected to the O-bus it is important that it is connected into the correct side of the existing equipment.

Important

Handle the fibre optic cables with care or the signal may be distorted.

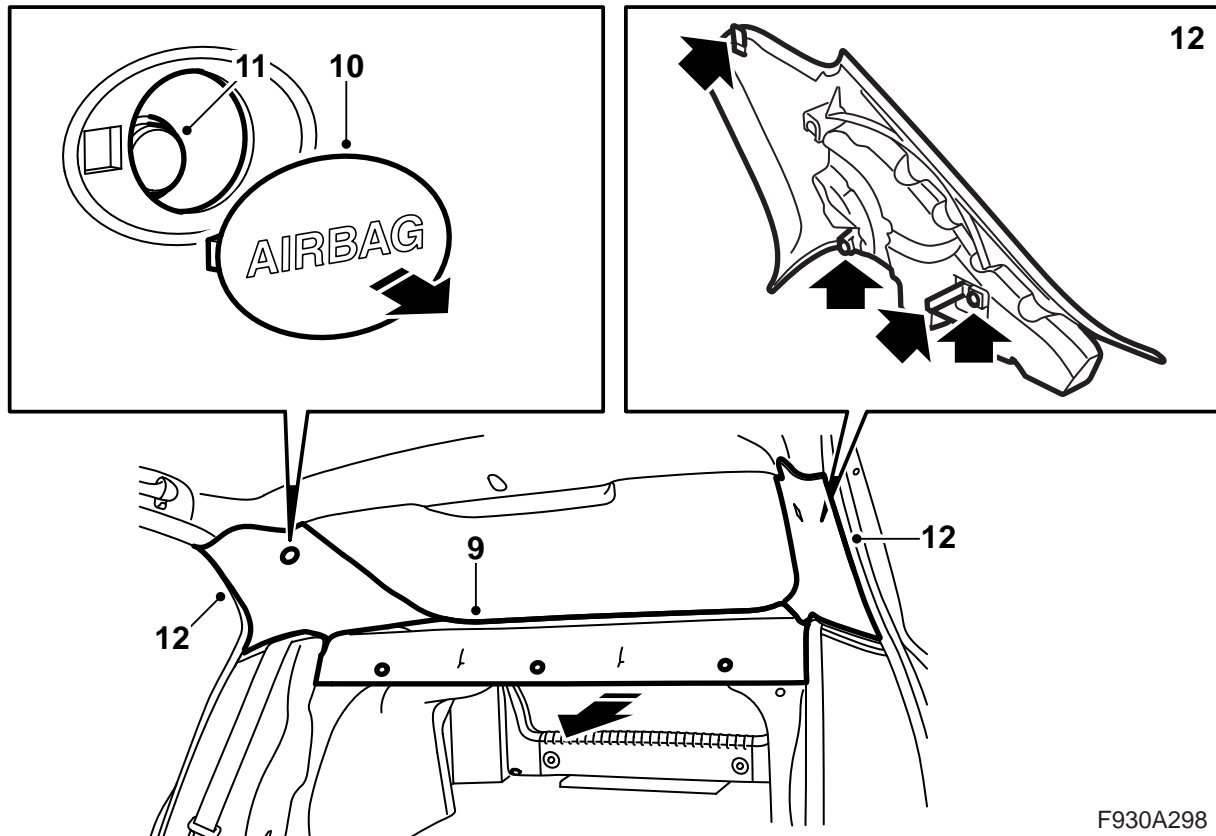
- It is very important that the two leads in the connector are not confused with one another.
- Do not splice the cables.
- Do not bend the cable in a radius smaller than 25 mm.
- Do not expose the cable to temperatures exceeding 85 °C.
- Keep the cable ends free from dirt and grime.
- Do not expose the cable to impact as this may cause the transparent plastic to whiten, thereby reducing the intensity of the light and causing possible communication interruptions.
- The cable should not lie against any sharp edges as this may cause increased signal reduction.



Important

In cars where the left-hand front seat is electrically adjustable and there is no bracket at the REC, the left-hand front seat must be positioned in its most forward position and with the backrest folded forwards.

- 1 **Cars without navigation:** Open the boot lid.
- 2 Open the bonnet, remove the battery cover and negative cable and take the key from the ignition.
- 3 **Cars without navigation:** Fold the luggage compartment floor forwards.
- 4 **Cars without navigation:** Remove the hatch in the luggage compartment's left-hand side trim.
- 5 **Cars without navigation:** Remove the clips for the left-hand side trim and fold the trim away.
- 6 Open the rear doors.
- 7 Lower the rear seat backrest.



F930A298

- 8 Detach the clips holding the parcel shelf trim.
- 9 Pull the parcel shelf trim straight out.
- 10 Remove the cover plate from each respective C-pillar trim. Use 82 93 474 Removal tool.
- 11 Carefully remove the screw from each respective C-pillar trim.

Important

The screw is fitted in an expander which is mounted in the body. If the expander is pushed through the hole it may be lost.

- 12 Remove the C-pillar trims by first pulling the lower edge of each respective trim directly outwards from the C-pillar and then turning them, so that the hook in the upper edge becomes free.

- 13 Locate the antenna cable(s) at the right-hand C-pillar.

Cars with single antenna cable which continues forward in the car: Continue with step 14.

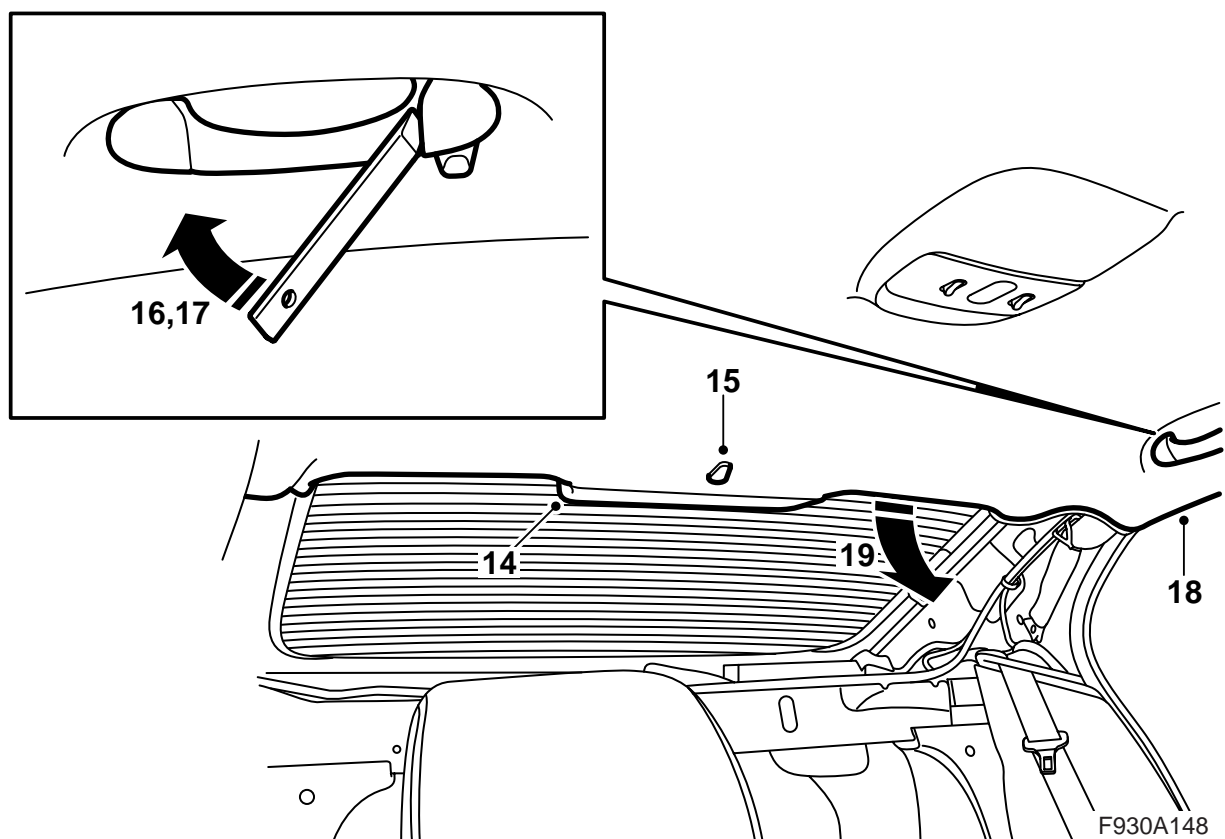
Cars with single antenna cable with violet connector and where the antenna cable continues to the centre of the parcel shelf. No telematics unit: Continue with step 26.

Cars with double antenna cable where one continues forward in the car and the other continues to the centre of the parcel shelf. Telematics unit fitted: Continue with step 14.

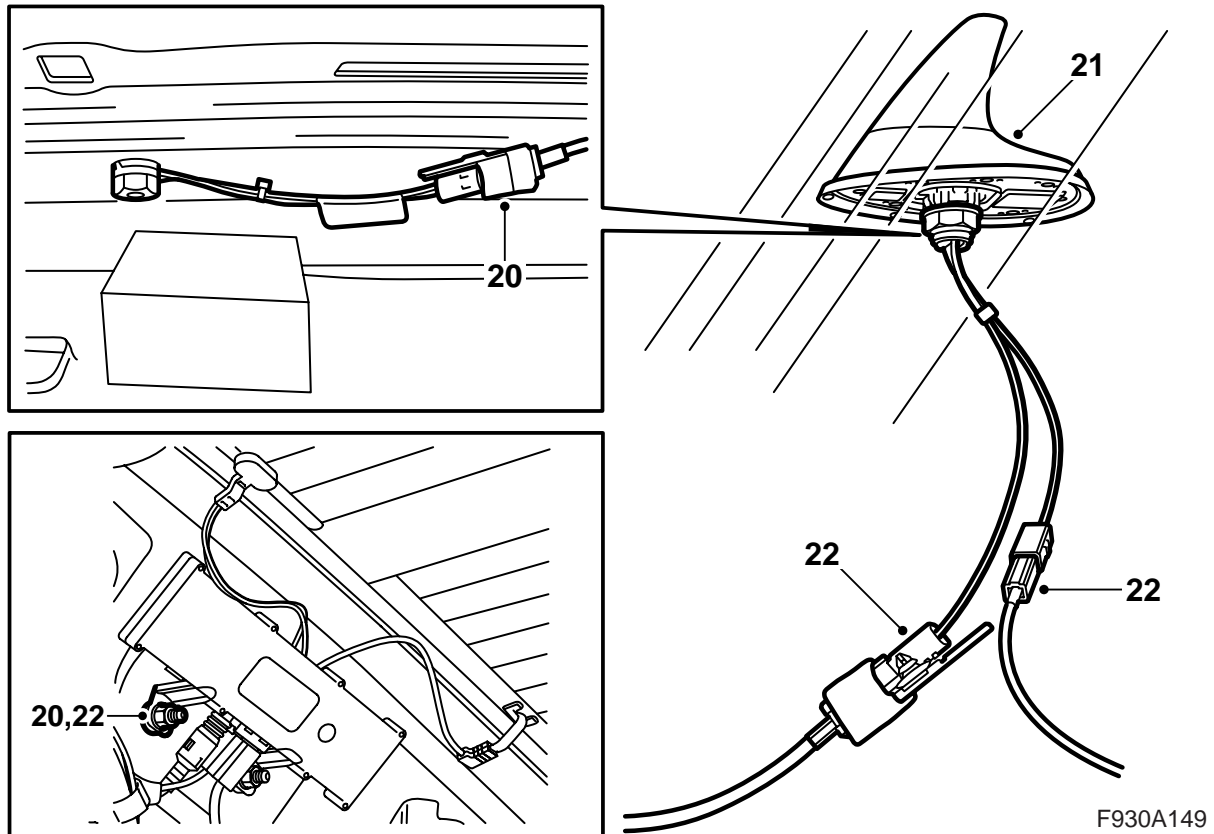
Cars with double antenna cable where one continues forward in the car and the other continues to the centre of the parcel shelf. No telematics unit: Continue with step 14.

Cars with double antenna cable which continues to the centre of the parcel shelf. Telematics unit fitted: Continue with step 31.

Cars with double antenna cable which continues to the centre of the parcel shelf. No telematics unit: Continue with step 26.



- 14 Remove the high-level brake light cover by carefully drawing the cover downwards and backwards.
- 15 Remove the clip at the rear edge of the headlining by turning it 90°.
- 16 Remove the end pieces on the rear courtesy handle. Use 82 93 474 Removal tool and prise outwards.
- 17 Draw the courtesy handle straight out.
- 18 Undo the ceiling trim from the weatherstrip by the rear doors.
- 19 Carefully lower the roof at the rear edge so that the antenna can be reached. The brake light connector may have to be removed.

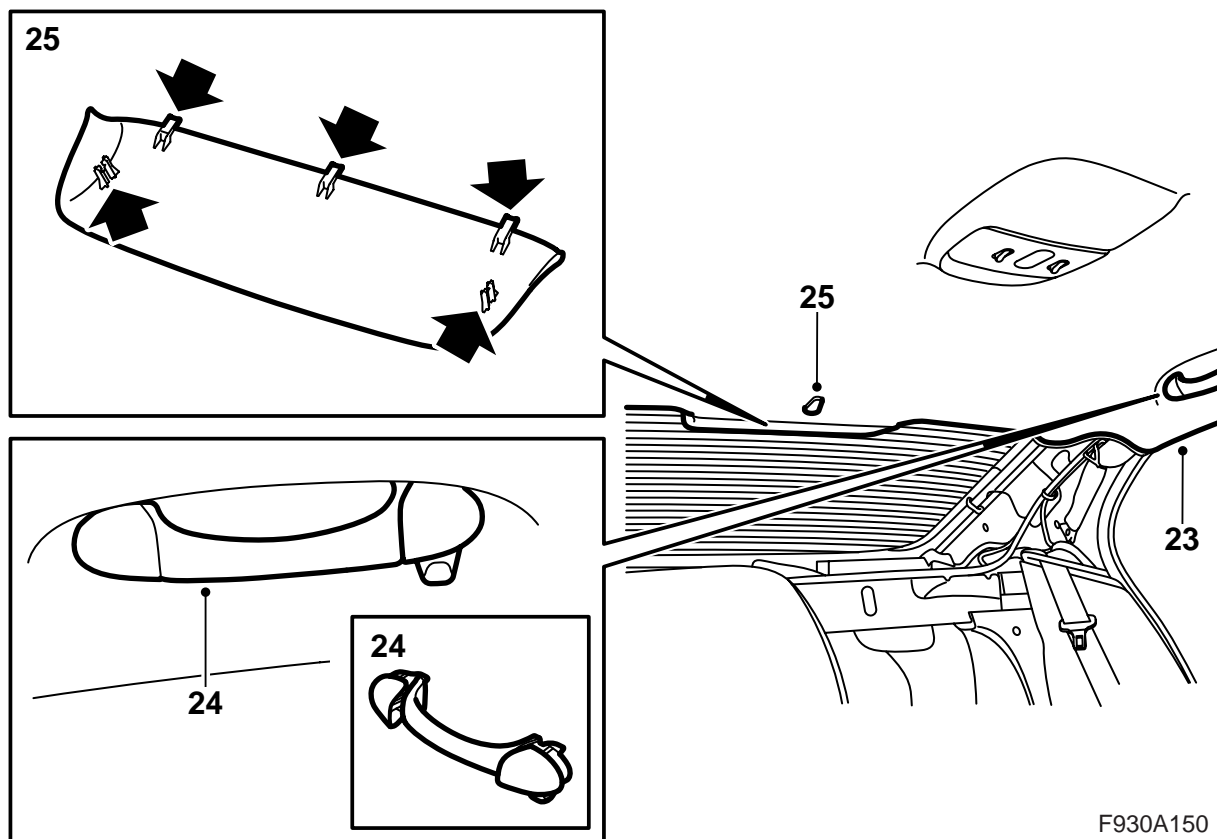


20 Remove the antenna cable from the roof antenna, remove the antenna cable from the holes in the rear edge of the roof and bend the antenna cable down along the right-hand C-pillar. The antenna cable may be secured using a clip to the antenna amplifier's upper retaining screw, if so, remove this clip.

21 **Cars with double antenna cable where one antenna cable continues forward in the car and the other antenna cable continues to the centre of the parcel shelf:** Remove the antenna cable which runs to the centre of the parcel shelf, and if a telematics unit is fitted, the antenna cable must also be detached from it.

22 Connect the kit's antenna cable and continue as follows:

- Fit the clips on the cable in the holes in the rear edge of the roof.
- Guide the antenna cable towards the right-hand C-pillar and secure the kit's antenna cable on the antenna amplifier's upper retaining screw.
- Secure both antenna cables and excess connectors with cable ties to the C-pillar.
- Fit the plastic foam tape to the body behind the excess connectors in order to prevent rattling.
- Guide the antenna cable down from the C-pillar to the centre of the parcel shelf.

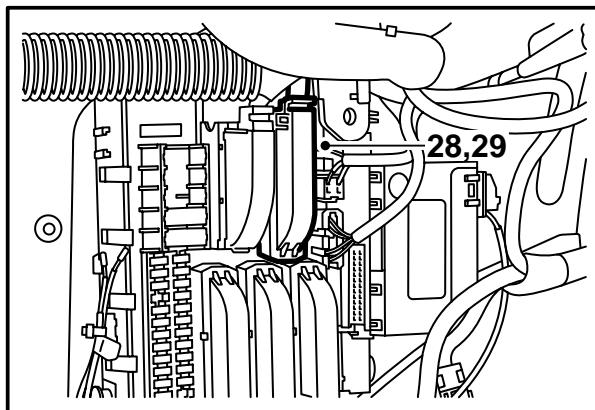
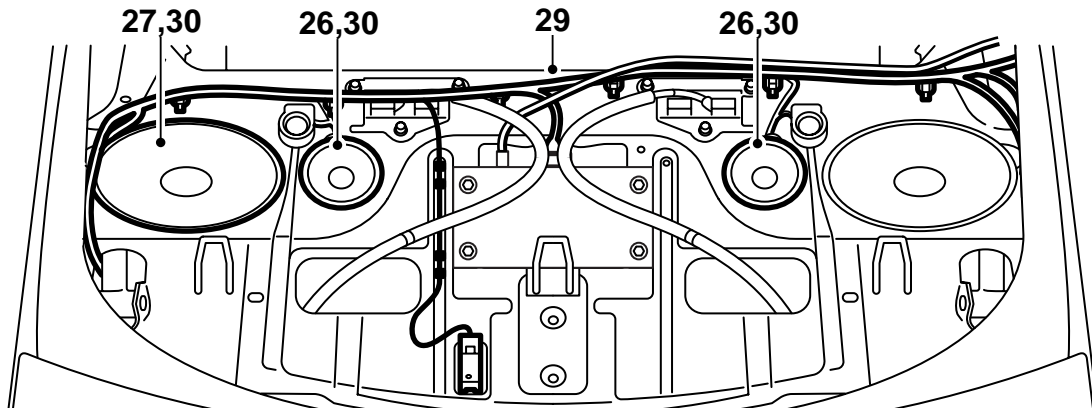


F930A150

- 23 Fit the ceiling trim above the rear doors' weatherstrip.
- 24 Press and fasten the rear courtesy handle securely into the end pieces.
- 25 Plug the connector into the upper brake light (if it has been removed), fit the cover and press in the headlining clip.

Cars without navigation: Continue with step 26.

Cars with navigation: Continue with step 31.



F930A151

26 Remove the mid-range speakers from the parcel shelf and detach the connectors from the speakers.

Important

If the car has treble speakers the connector must be separated so that the wiring harness between the treble speakers and the mid-range speakers is still connected to the speakers.

27 Remove the left-hand bass speaker or the left-hand cover.

28 Remove the wiring harness from the parcel shelf and remove the connection in the REC.

29 Fit the new wiring harness above the parcel shelf and connect it.

Important

Handle the fibre optic cables with care or the signal may be distorted.

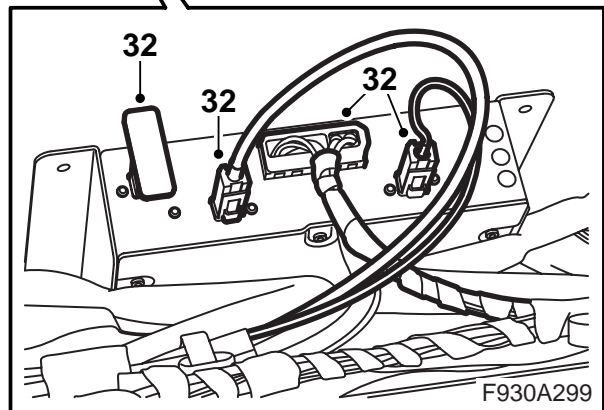
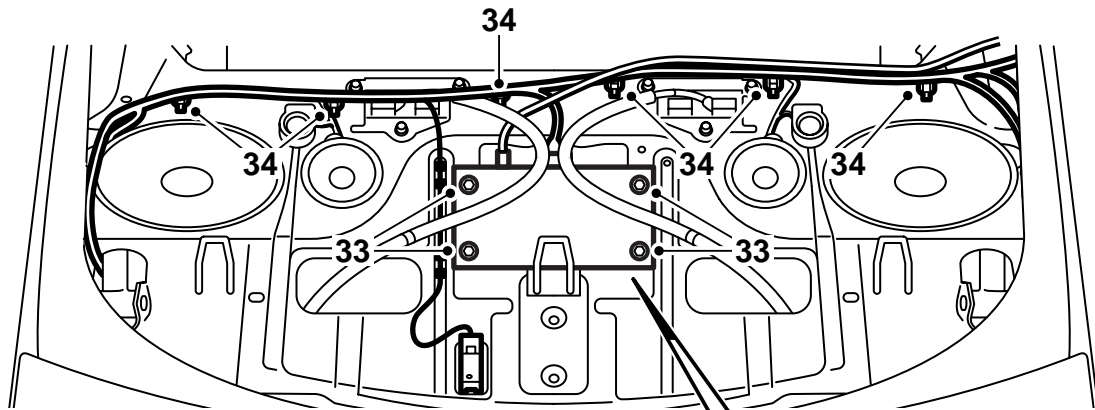
- Do not bend the cable in a radius smaller than 25 mm.
- Do not expose the cable to impact as this may cause the transparent plastic to whiten, thereby reducing the intensity of the light and causing possible communication interruptions.
- The cable should not lie against any sharp edges as this may cause increased signal reduction.

Position the connector with the two fibre optic cables next to the REC without attaching it.

30 Connect and fit the speakers and any cover.

Important

If the car has no bass speakers then the connectors must be fitted on the underside of the speaker covers.

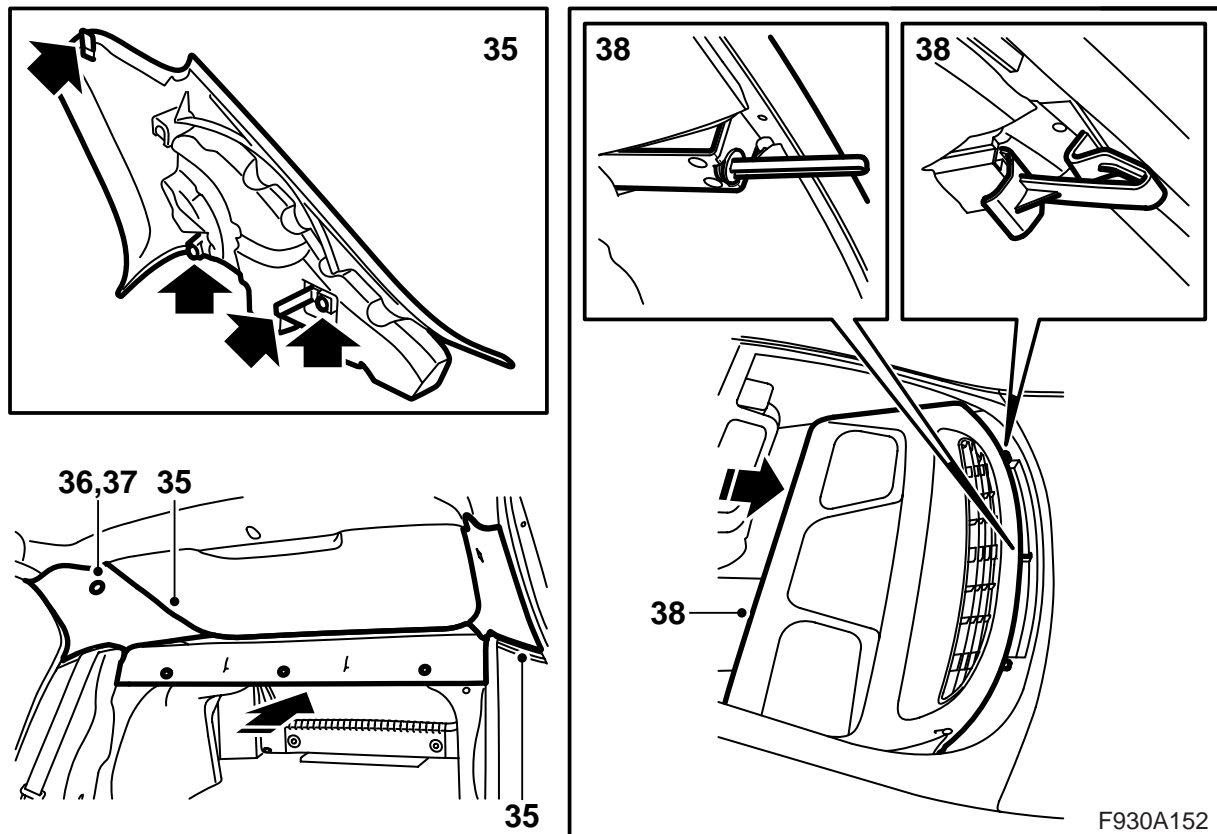


- 31 **Cars with navigation:** Remove the connector from the telematics unit and remove the telematics unit.
- 32 Place the kit's telematics unit on the parcel shelf and connect the wiring harness and antenna cables. Connect the bluetooth antenna.

Important

Be careful with the bluetooth antenna as it is very easily damaged.

- 33 Fit the telematics unit and screw it into the parcel shelf.
- Tightening torque 8 Nm (6 lbf ft)**
- 34 Secure the wiring harness and antenna cables to the cable clamps on the parcel shelf.

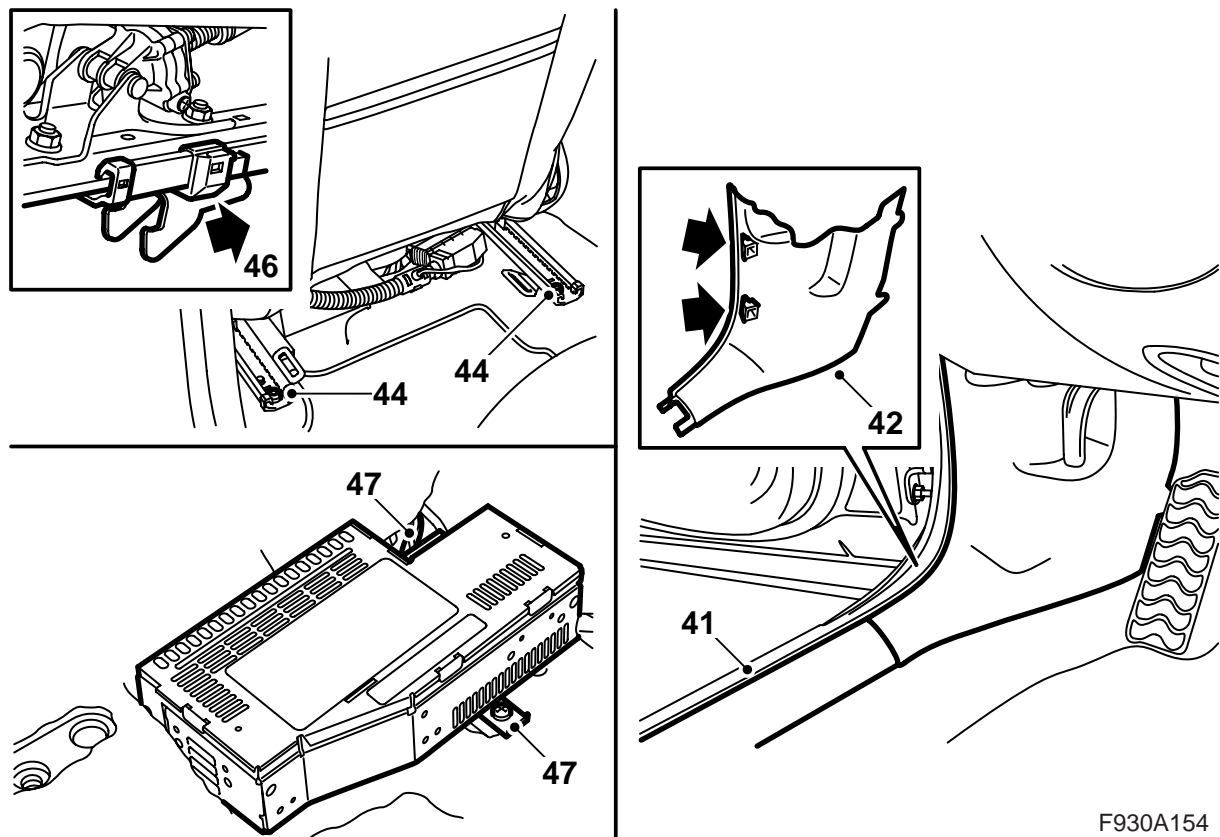


- 35 Guide each respective C-pillar trim into position. Be careful with the screw so that the expander does not press into the body.

⚠ WARNING

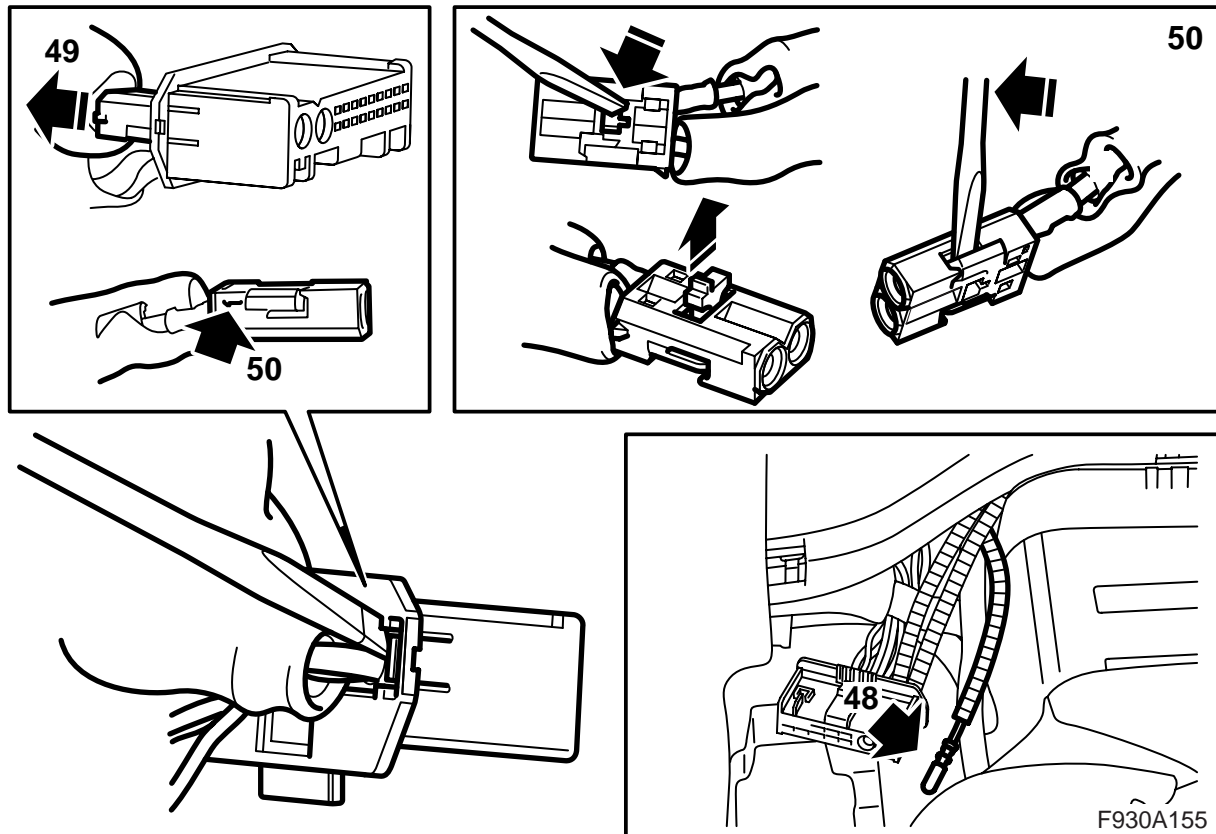
Be careful that the inflatable curtain is not damaged. Damage can result in the inflatable curtain not providing the intended protection to the occupants in the event of a collision.

- 36 Tighten each respective screw.
Tightening torque 2 Nm (1.5 lbf ft)
- 37 Fit the cover plates.
- 38 Slide in the parcel shelf trim. Make sure the lugs fully engage the mountings in the parcel shelf plate.
- 39 Fit the clips to the parcel shelf trim.
- 40 Raise the backrest. Check that the backrest is locked
- Cars where there is no bracket at the REC:**
Continue with step 41.
- Cars without navigation where the bracket at the REC is fitted:** Continue with step 72.
- Cars with navigation:** Continue with step 98.



F930A154

- 41 Remove the front scuff plate on the left-hand side of the car.
- 42 Remove the lower section of the A-pillar trim on the left-hand side.
- 43 Position the left-hand front seat in its forward position and fold the backrest forwards if not already done.
- 44 Remove the two rear retaining screws from the seat.
- 45 Angle the seat forwards.
- 46 Pull the seat back so that the fitting hooks loosen from their positions. Fold the whole seat backwards.
- 47 Remove the amplifier.



48 Locate the green marked fibre optic cable by the amplifier.

If there is no colour marking: Follow steps 67 and 68 in these installation instructions, shine a light onto the fibre optic cable by the amplifier and check the fibre optic cables in the luggage compartment in order to identify the correct fibre optic cable. Mark the cable with a piece of tape.

Important

Handle the fibre optic cables with care or the signal may be distorted.

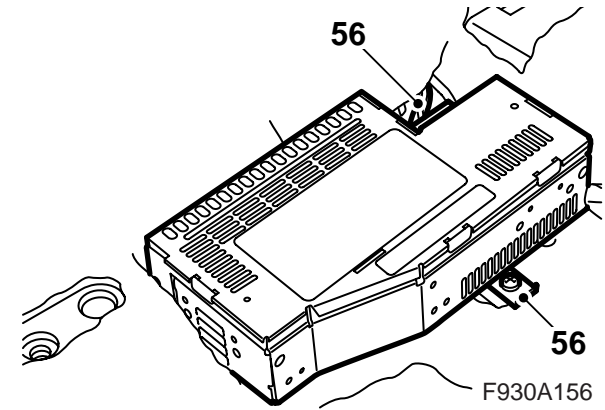
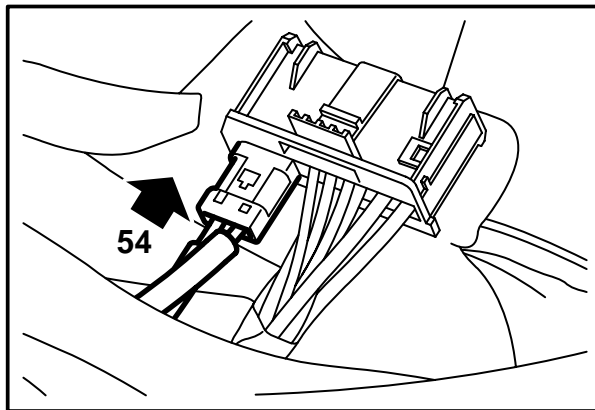
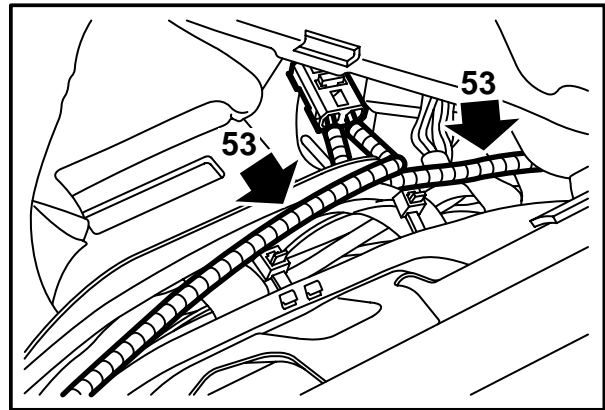
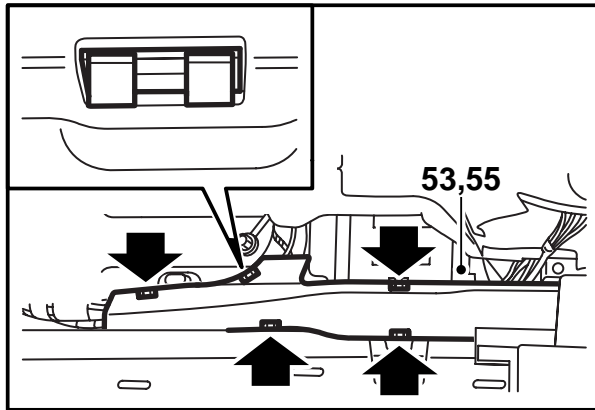
- It is very important that the two leads in the connector are not confused with one another.
- Do not bend the cable in a radius smaller than 25 mm.
- Keep the cable ends free from dirt and grime.
- Do not expose the cable to impact as this may cause the transparent plastic to whiten, thereby reducing the intensity of the light and causing possible communication interruptions.
- The cable should not lie against any sharp edges as this may cause increased signal reduction.

49 Unplug the fibre-optic cable connector (the small connector) from the amplifier connector.

50 Remove the fibre optic cable connected to position 1 by opening the connector locking clip and carefully lifting the hook.

51 Remove the protective cover from the connection on the extra fibre optic cable.

52 Fit the protective cover onto the removed fibre optic cable connection and carefully move the fibre optic cable aside in order to prevent damage.



53 Remove the cover on the cable duct, check that the fibre optic cable cannot bend and fit the connection on the fibre optic cable in position 1 in the small connector for the amplifier. Fit the lock.

Important

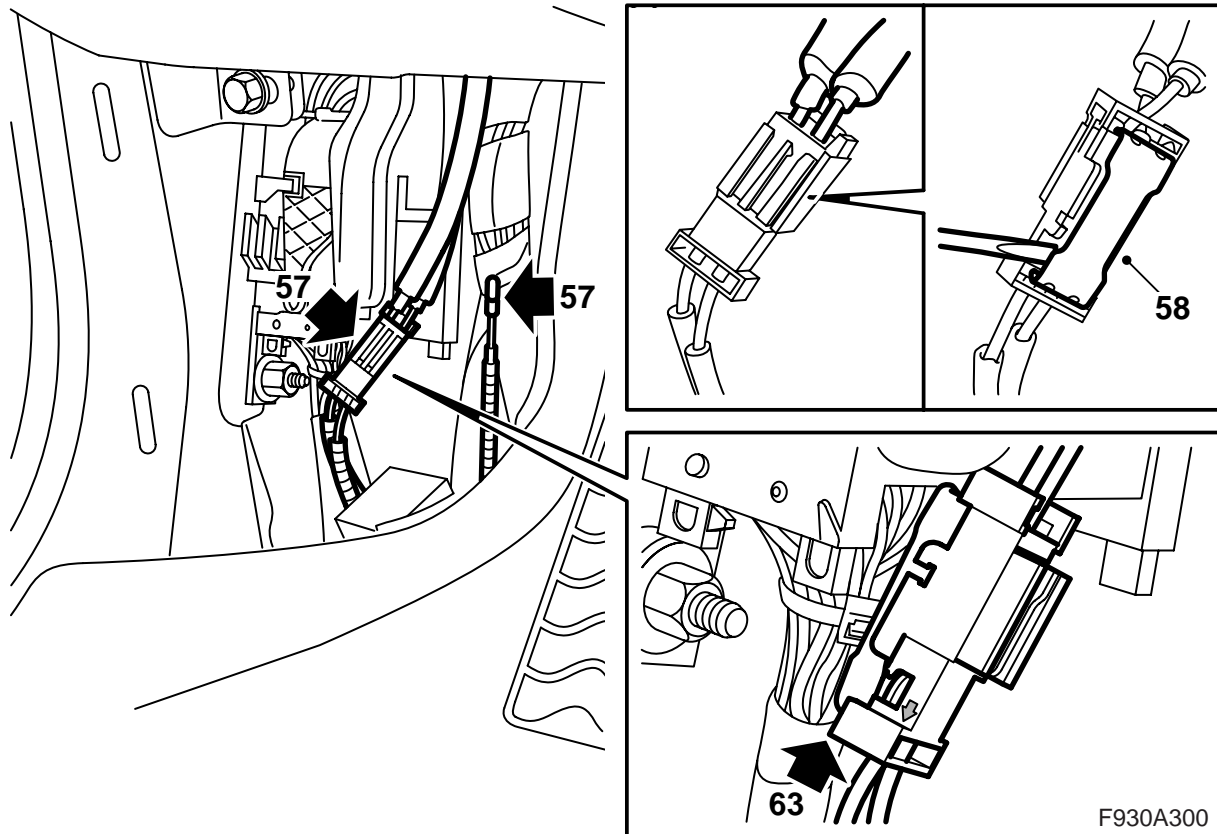
Handle the fibre optic cables with care or the signal may be distorted.

- It is very important that the two leads in the connector are not confused with one another.
- Do not bend the cable in a radius smaller than 25 mm.
- Keep the cable ends free from dirt and grime.
- Do not expose the cable to impact as this may cause the transparent plastic to whiten, thereby reducing the intensity of the light and causing possible communication interruptions.
- The cable should not lie against any sharp edges as this may cause increased signal reduction.

54 Fit the small connector to the large connector.

55 Fit the cover to the cable duct, draw back the carpet and guide out the connector and the cables through the hole in the carpet.

56 Connect and fit the amplifier.



- 57 Locate the loose fibre optic cable and the connector with the fibre optic cables connected by the left-hand A-pillar (taped to the cable duct).

⚠ WARNING

The visible red light is a class 1 laser. Do not look directly into the optical fibre or the control module connector at close range. A distance of less than 20 mm between your eyes and the light source may cause eye injury.

- 58 Lift up the connector lock tab.
59 Remove the fibre optic cable from the position in the connector where the arrow points outwards, to the fibre optic cable.

Important

Handle the fibre optic cables with care or the signal may be distorted.

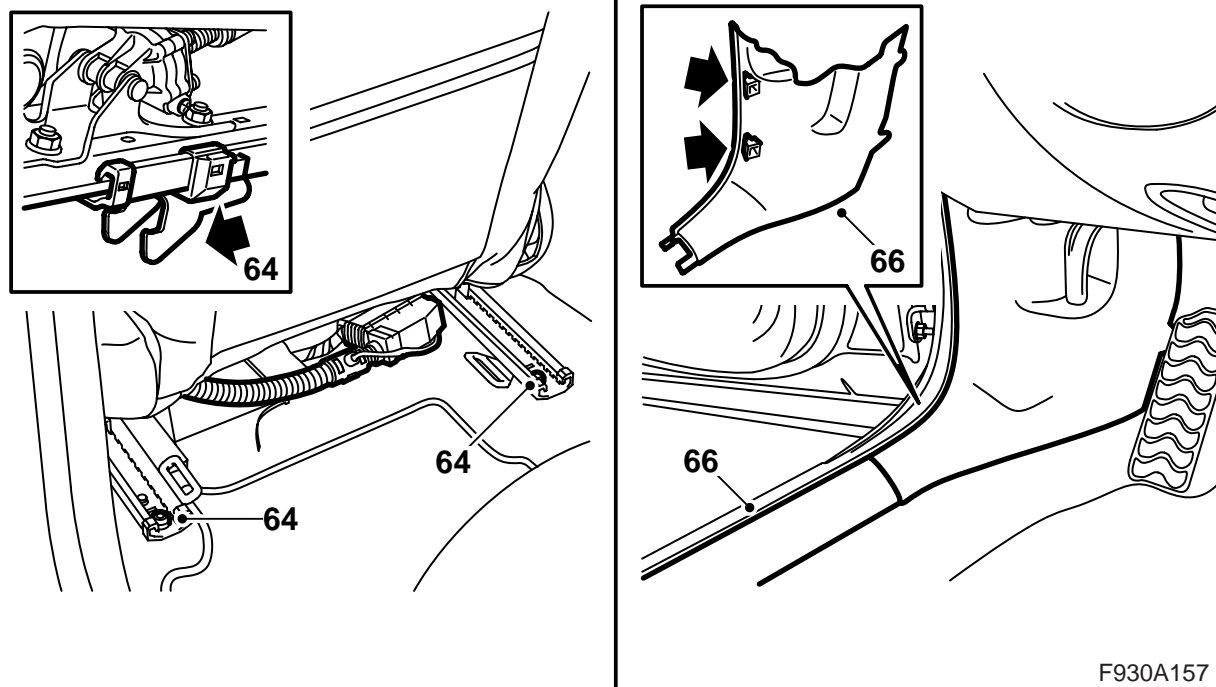
- It is very important that the two leads in the connector are not confused with one another.
- Do not bend the cable in a radius smaller than 25 mm.
- Keep the cable ends free from dirt and grime.
- The cable should not lie against any sharp edges as this may cause increased signal reduction.

- 60 Remove the fixing tape from the loose fibre optic cable.

- 61 Remove the protective cover from the connection.

- 62 Fit the protective cover onto the removed fibre optic cable connection and carefully move the fibre optic cable aside in order to prevent damage, and position it behind the wiring harness.

- 63 Fit the connection on the new fibre optic cable in the position in the connector where the arrow points outwards, to the fibre optic cable and fit the lock tab.



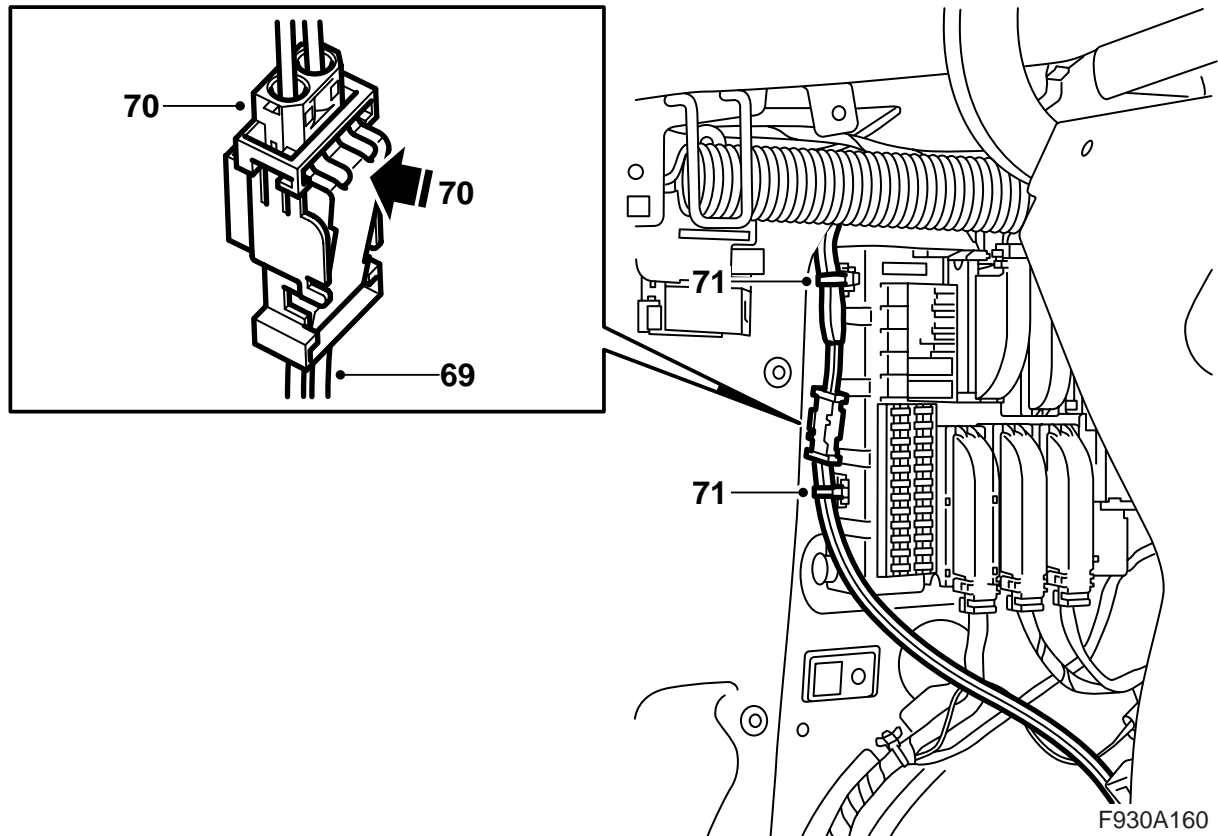
64 Set the seat in its correct position, be careful that the fitting hooks locate themselves correctly into their brackets, and fit the rear retaining screws.

Tightening torque 30 Nm (22 lbf ft)

65 Push the seat backwards and reset the position of the back rest.

66 Fit the A-pillar trim and the scuff plate.

F930A157



- 67 Locate the fibre optic cable by the REC.
- 68 Remove the protective covers from the fibre optic cables.

⚠ WARNING

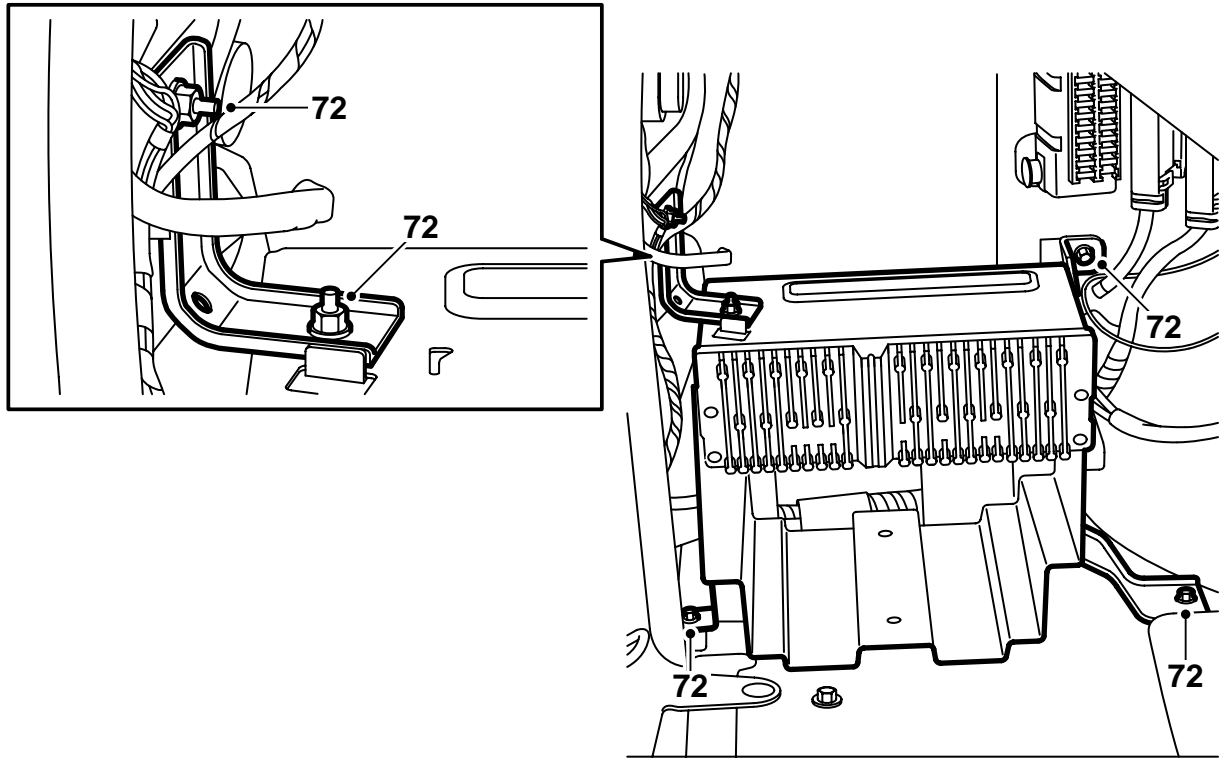
The visible red light is a class 1 laser. Do not look directly into the optical fibre or the control module connector at close range. A distance of less than 20 mm between your eyes and the light source may cause eye injury.

- 69 Connect the unmarked fibre optic cable in the position in the kit's connector where the arrow points outwards, to the fibre optic cable, and connect the green-marked fibre optic cable in the position in the kit's connector where the arrow points inwards, to the connector.

Important

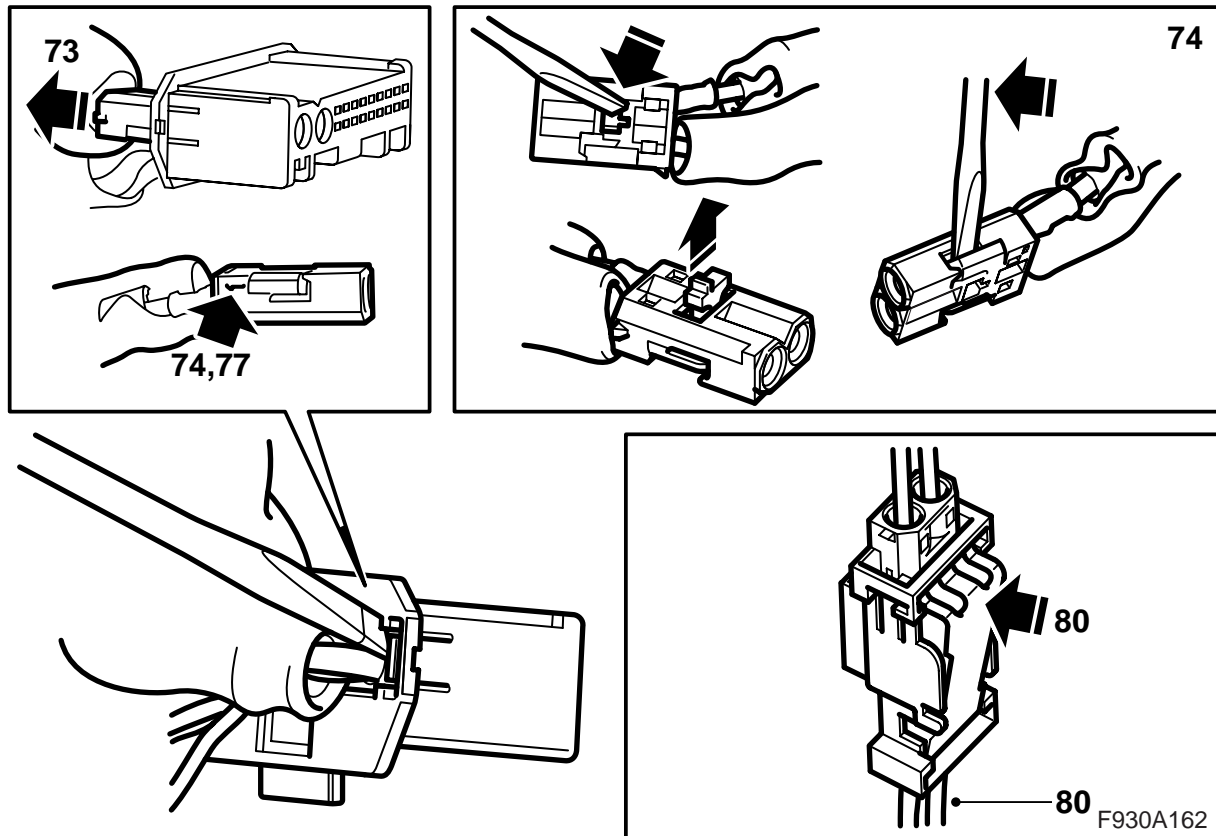
For cars without green-marked fibre optic cable it is important that the fibre optic cable previously marked with tape is fitted in the position in the connector where the arrow points outwards, to the fibre optic cable.

- 70 Fit the small connector to the connector. Fit the lock tab.
- 71 Secure the fibre optic cables in the REC using two cable ties of which one is fitted on the fibre optic cables coming from the parcel shelf.
- Continue with step 84.



F930A161

72 Remove the bracket and take it out to facilitate access.



73 Amplifier or CD changer fitted: Remove the connector and remove the small connector from the large connector.

Amplifier or CD changer fitted: Remove the CD changer connector and remove the small connector from the large connector.

74 Amplifier and/or CD changer fitted: Remove the fibre optic cable connected to position 1 in the removed connector by opening the lock in the connector and carefully lifting the hook.

75 Amplifier and/or CD changer fitted: Fit the removed fibre optic cable in the kit's connector in the position in the connector where the arrow points inwards, to the connector.

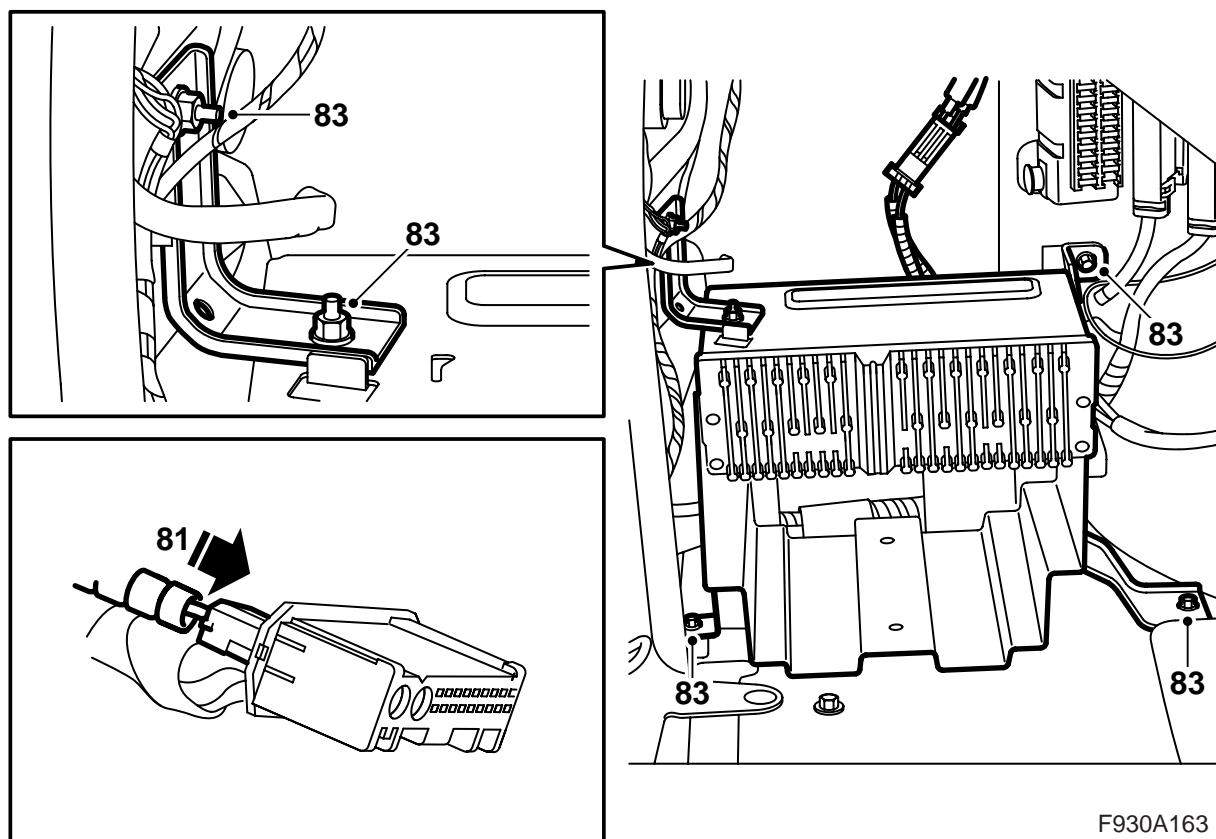
76 Amplifier and/or CD changer is fitted: Remove the protective covers from the connections on the accessory kit's fibre optic cable.

77 Amplifier and/or CD changer fitted: Fit one connection on the kit's fibre optic cable in position 1 in the removed connector. Fit the lock.

78 Amplifier and/or CD changer fitted: Fit the other connection on the kit's fibre optic cable in the position in the connector where the arrow points outwards, to the fibre optic cable.

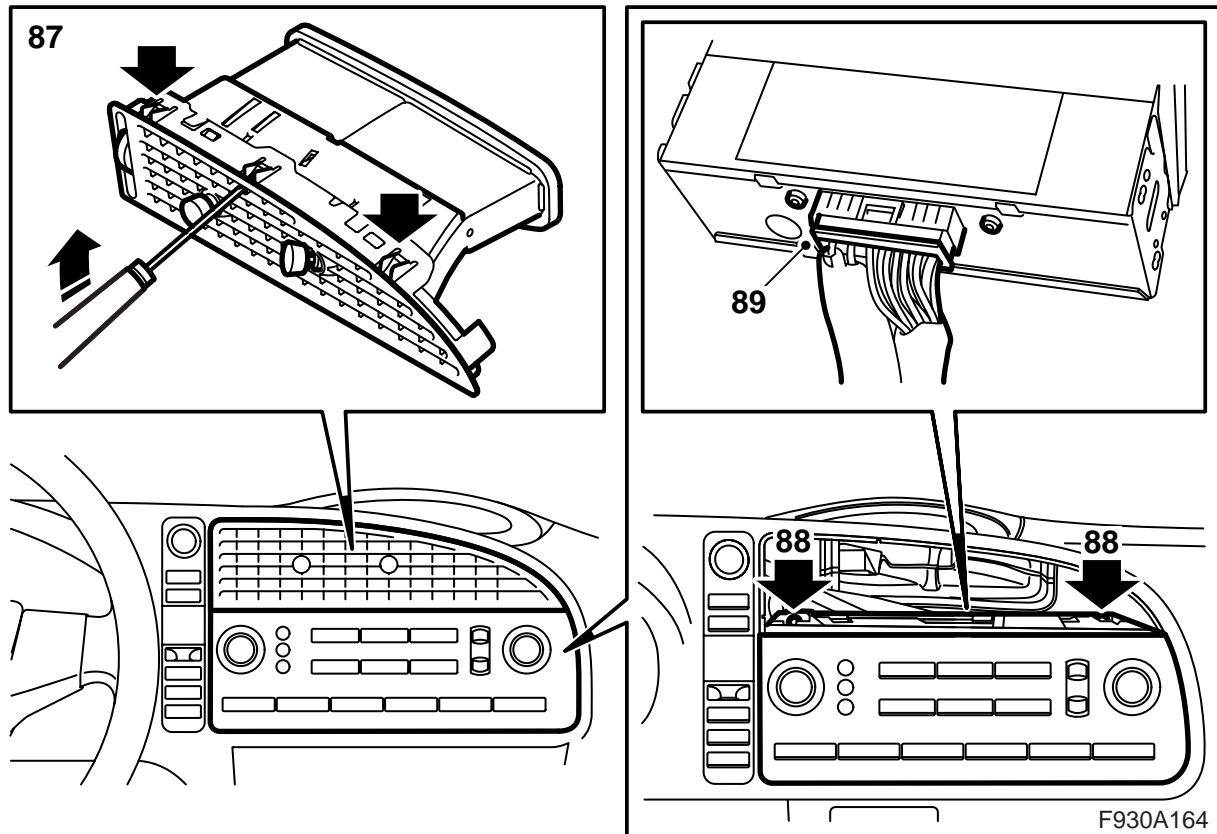
79 Amplifier and/or CD changer fitted: Locate the connector with the fibre optic cables at the REC.

80 Amplifier and/or CD changer fitted: Fit the small connector in the connector. Fit the lock tab.



F930A163

- 81 **Amplifier and/or CD changer fitted:** Fit the small connector to the large connector.
- 82 **Amplifier and/or CD changer fitted:** Plug in the connector.
- 83 Fit the bracket. Tighten the nut on the bracket's top side.
Continue with step 84.
- 84 Fit the side trim.
- 85 Fit the hatch in the luggage compartment's left-hand side trim.
- 86 Lower the luggage compartment floor.
- Cars where the infotainment control panel has no screen:** Continue with step 87.
- Cars where the infotainment control panel has a screen:** Continue with step 93.



87 Remove the centre air vent in the dashboard by carefully bending in the hooks accessible through the grille.

Note

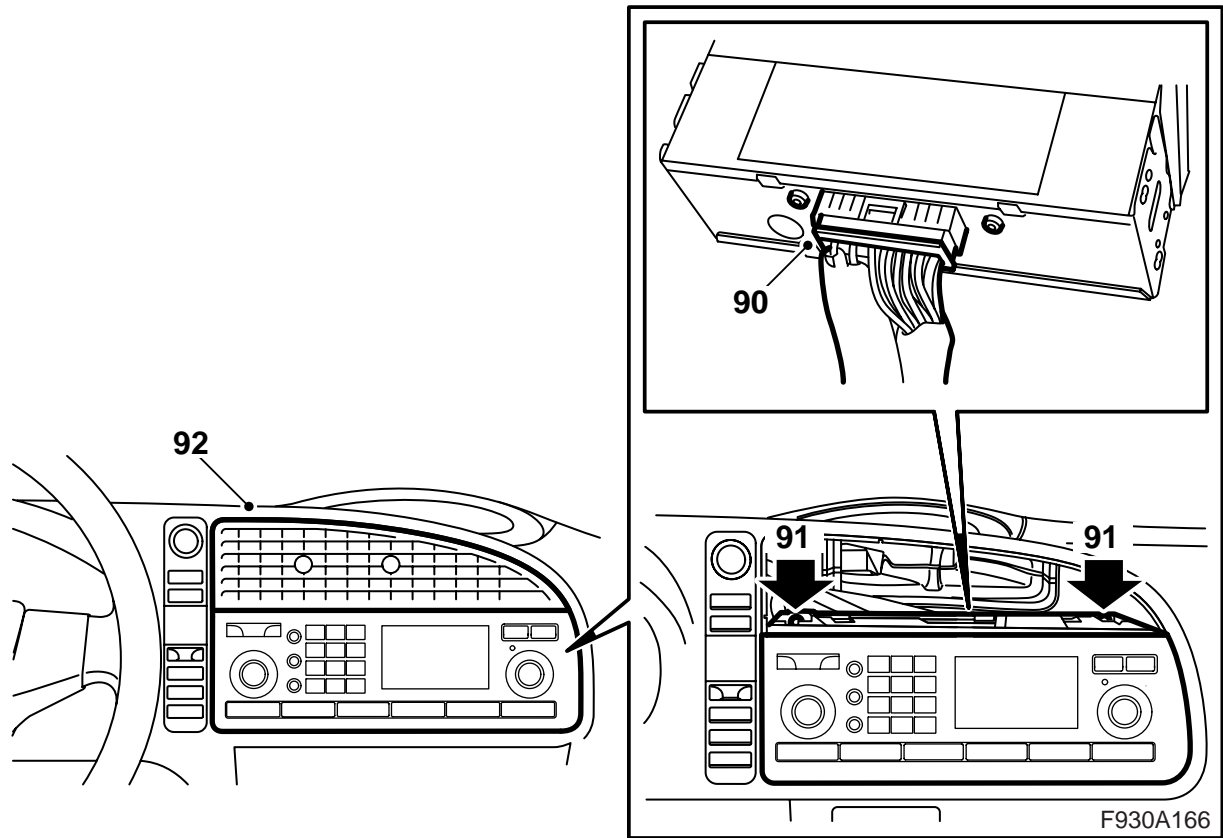
Take care to bend the correct hooks. Hooks holding together the air outlet are also visible behind the grille.

88 Remove the retaining screws for the infotainment control panel.

89 Remove the control panel and remove the connector.

WARNING

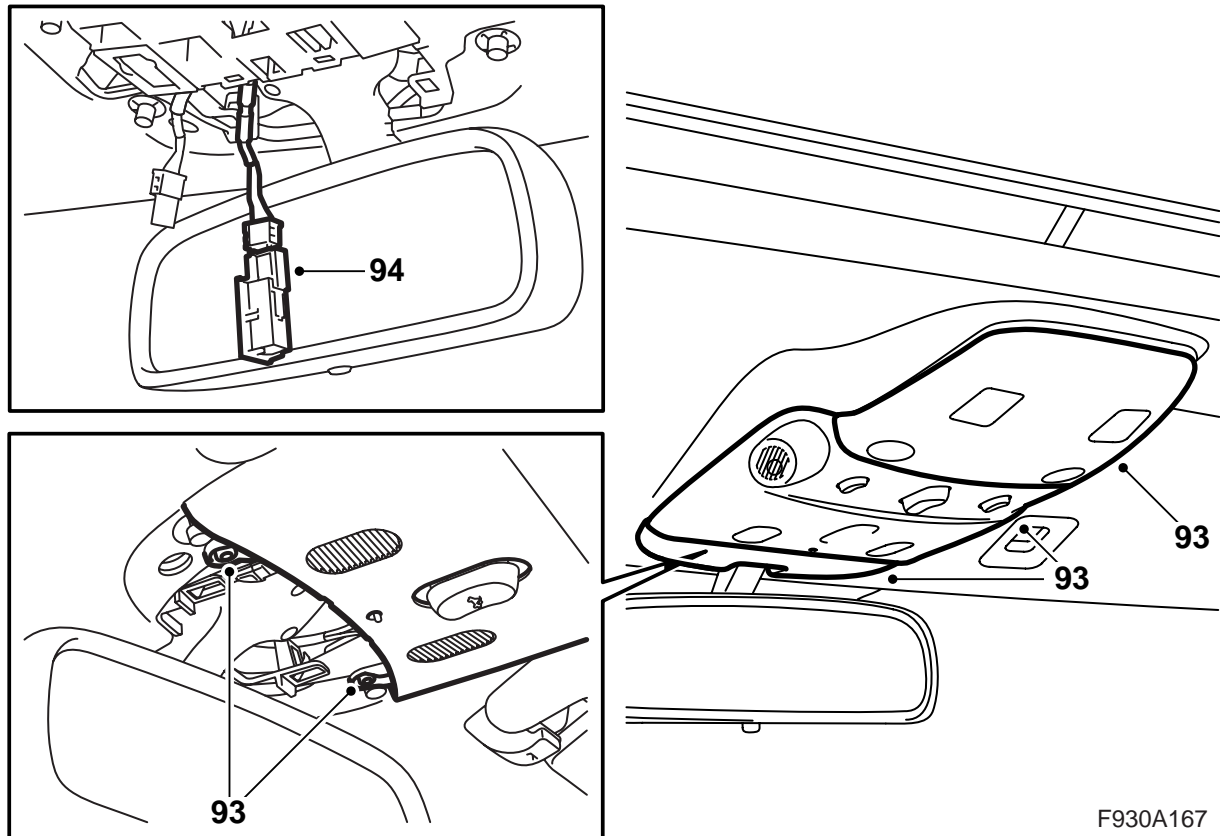
The visible red light is a class 1 laser. Do not look directly into the optical fibre or the control module connector at close range. A distance of less than 20 mm between your eyes and the light source may cause eye injury.



90 Plug in the connector to the new control panel.

91 Fit the control panel.

92 Position and fit the air vent.



F930A167

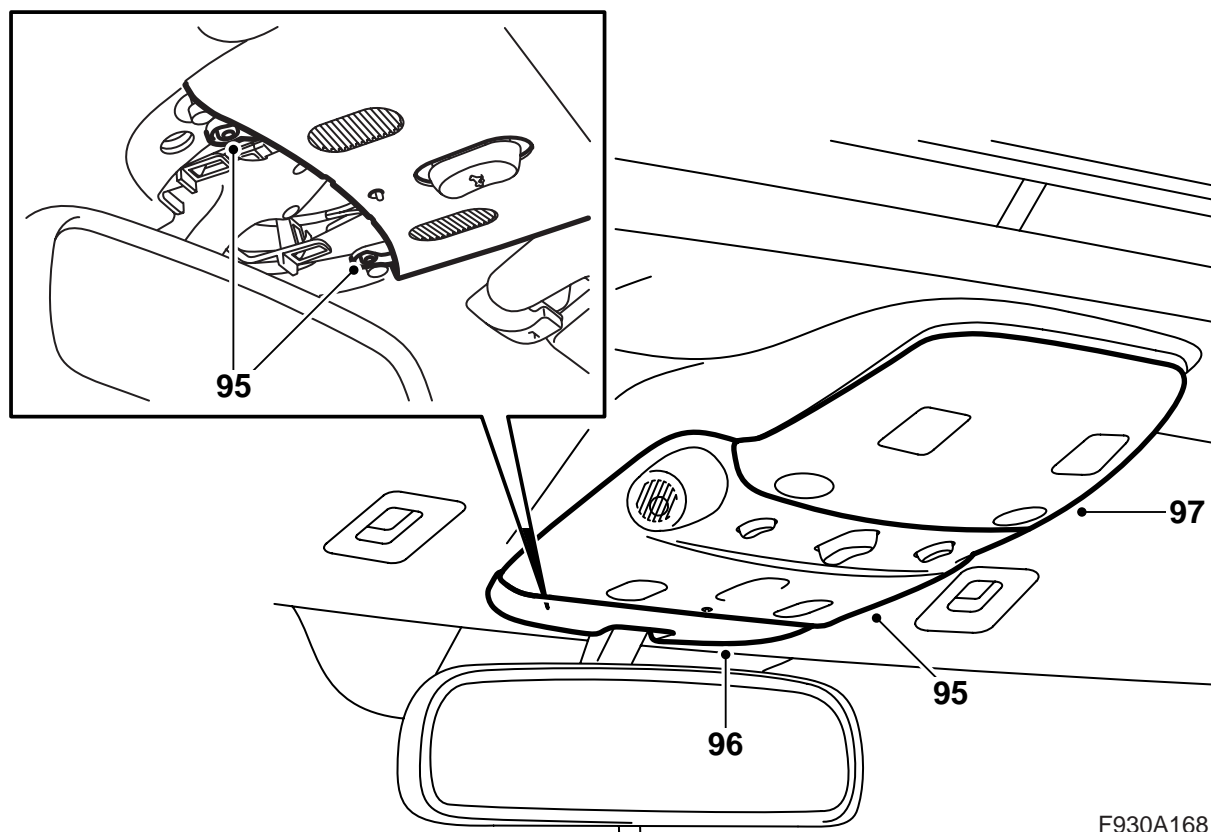
93 Remove the rear, centre and front sections of the roof lighting cover. Tool 82 93 474 is recommended.

Important

The centre section is fitted with two screws.

94 **Cars with telephone installation where the handsfree kit is not connected:** Locate the unmarked connector with two cables. Plug in the connector to the microphone if not already done. Fit the microphone on the right-hand side (LHD) or the left-hand side (RHD). Remove the piece of tape covering the opening for the microphone.

Cars with telephone installation where the handsfree kit is connected: Remove the connection cable from the microphone in the roof console. Locate the unmarked connector with two cables and plug in the connector to the microphone. Position the previously connected cable where the currently connected cable was located. Fit the microphone.



F930A168

- 95 Fit the centre section of the roof lighting cover.
- 96 Fit the front section of the roof lighting cover.
- 97 Fit the rear section of the roof lighting cover.
- 98 **Cars with steering wheel without switch:**
Replace steering wheel, see WIS.
- 99 Connect the battery's negative cable and fit the cover.
- 100 Synchronise remote control code by inserting the key into the ignition.

Important

Repeat this procedure with all keys. Otherwise, the remote controls will not function.

- 101 Adjust the time and date.
- 102 Activate the window lifts' pinch protection by running the side windows up and down twice. A sound is made to verify activation.

- 103M03 and M04 with Vehicle Identification Number up to and including 41018643:** If the infotainment system control panel has not been replaced, it must be SPS-programmed as follows:

Note

The diagnostic tool will on some occasions need to retrieve a security code in TIS. Information on what to do will be displayed on the diagnostic tool display.

- Connect the diagnostic tool
- Carry out an SPS-programming of the control module, ICM (to latest software), then select "Add/Remove", select ICM and select "Add".

- 104 Connect the diagnostic tool, select car and model year, select "All", select "Add/Remove", select the accessory and then "Add".

Note

The diagnostic tool will on some occasions need to retrieve a security code in TIS. Information on what to do will be displayed on the diagnostic tool display.

- 105 Check the system's function.