

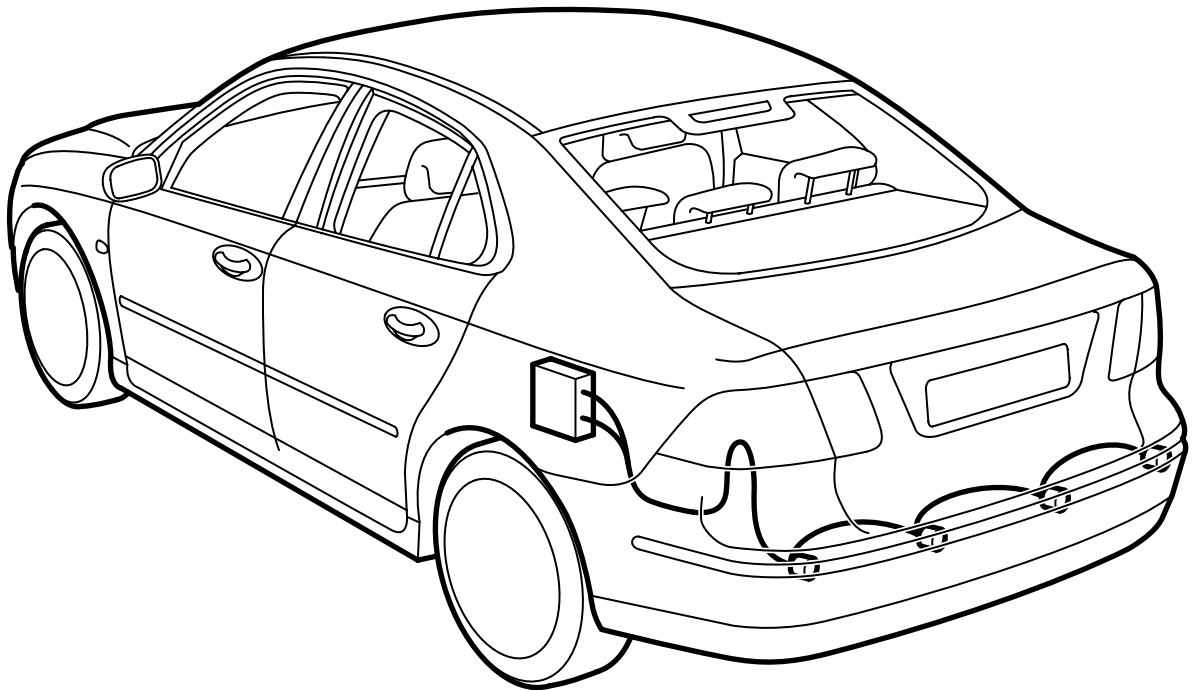


**MONTERINGSANVISNING · INSTALLATION INSTRUCTIONS
MONTAGEANLEITUNG · INSTRUCTIONS DE MONTAGE**

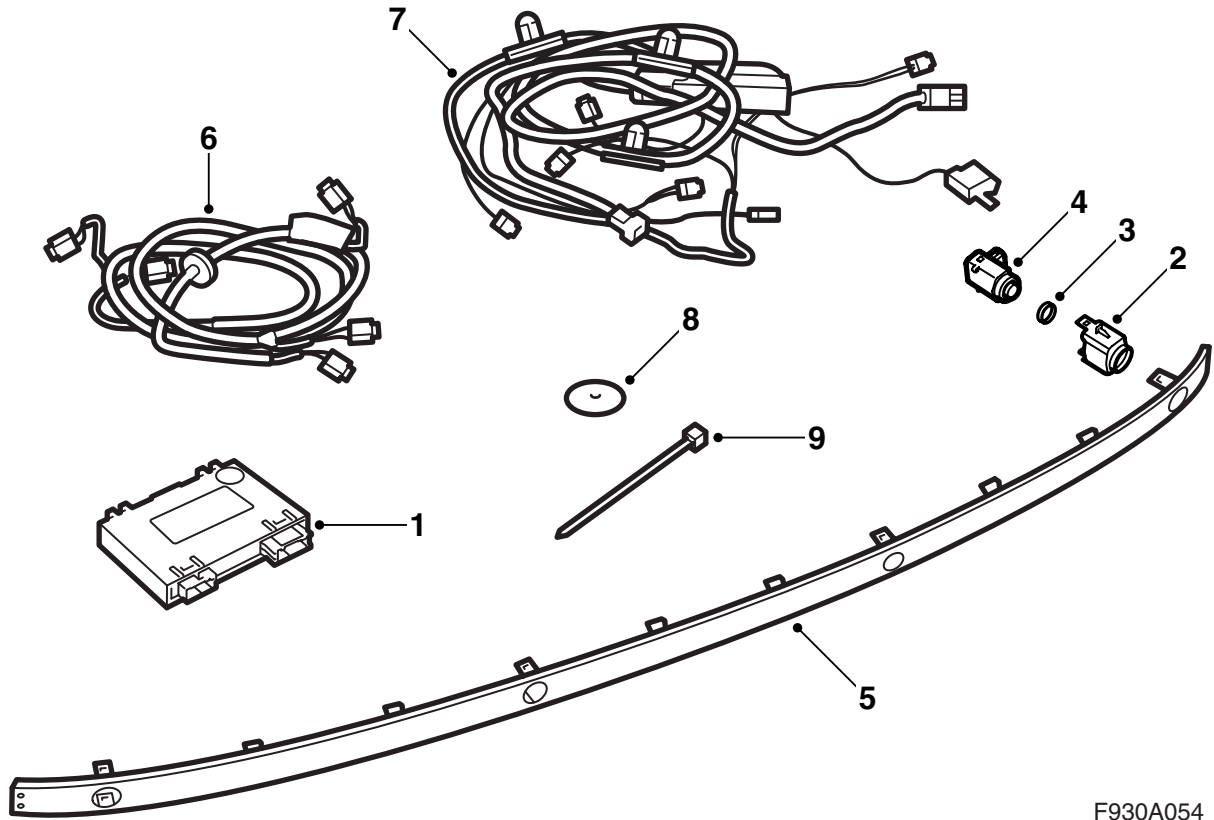
Saab 9-3 M03-

Parking assistance (SPA)

Accessories Part No.	Group	Date	Instruction Part No.	Replaces
12 787 887	9:40-03	Oct 02	12 788 454	12 788 454 Jul 02

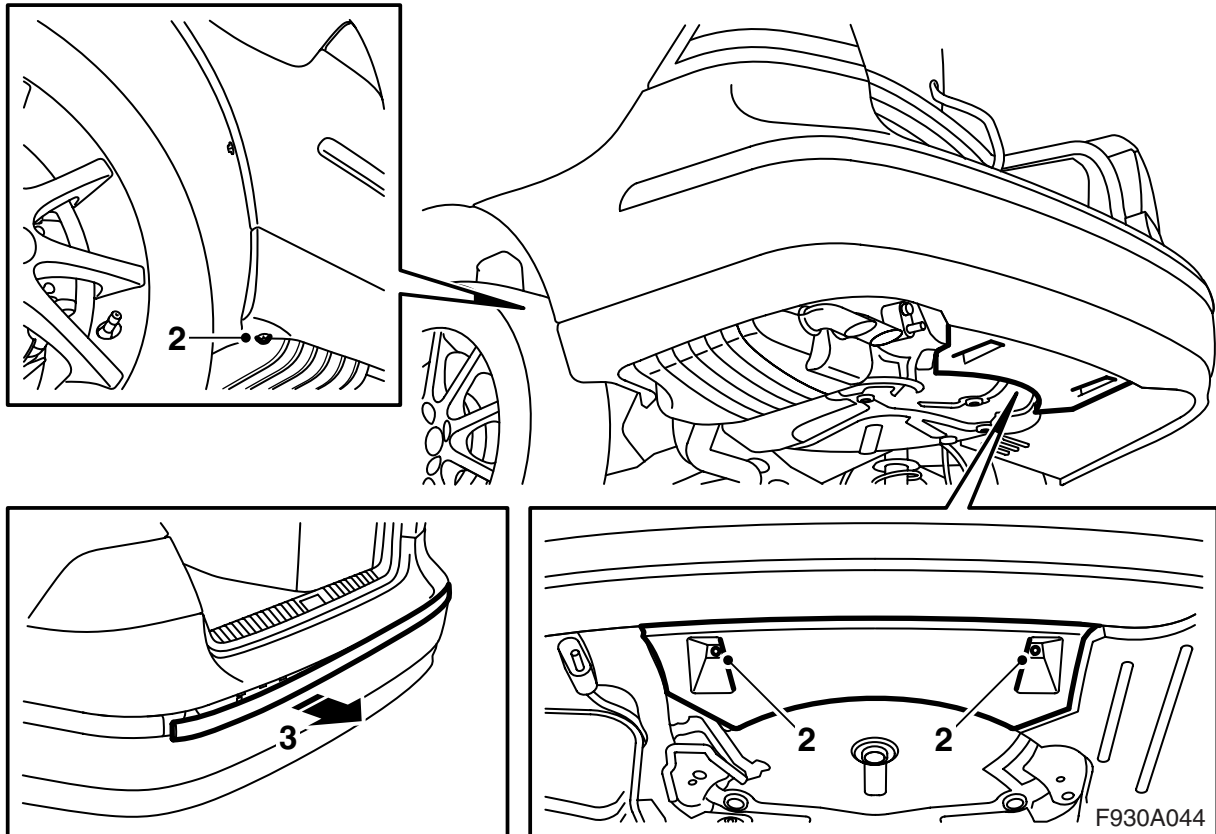


F930A042

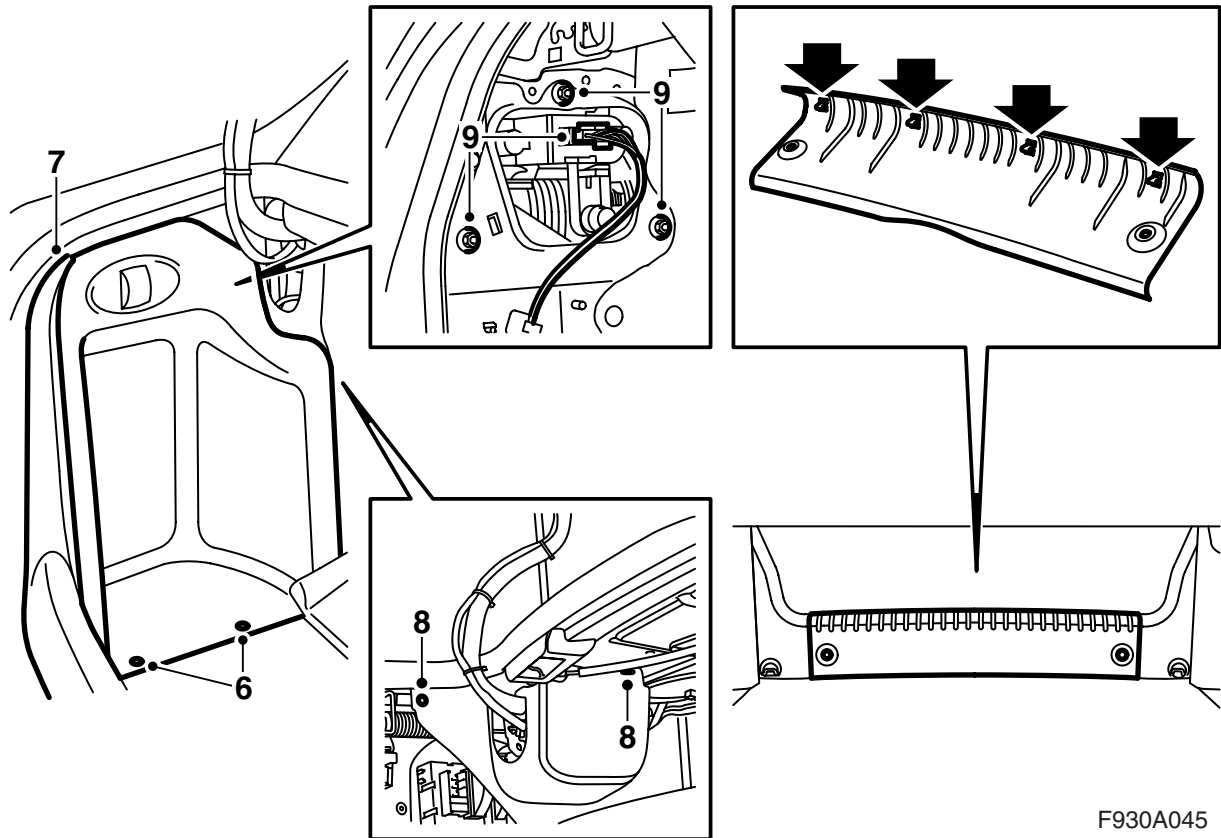


F930A054

- 1 SPA control module
- 2 Holder (x4)
- 3 Seal (x4)
- 4 Distance sensor (x4)
- 5 Moulding, bumper
- 6 Wiring harness, distance sensor
- 7 SPA wiring harness
- 8 Dust cover
- 9 Cable tie (x2)

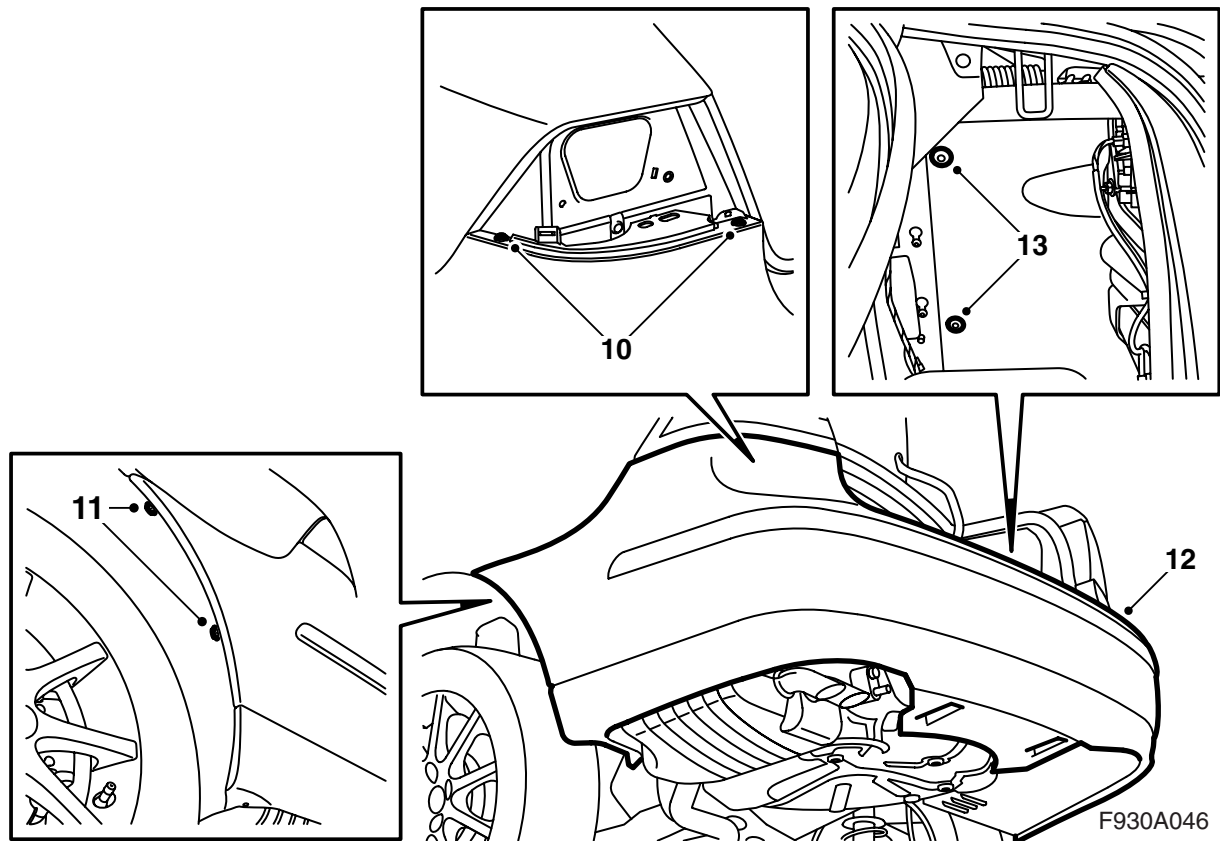


- 1 Disconnect the negative cable from the battery and raise the vehicle.
- 2 Remove the two nuts holding the air shield of the rear bumper against the body. Remove the two screws holding the bumper shell against the wheel housings.
- 3 Lower the vehicle and remove the rear bumper trim moulding.
- 4 Open the hatchback.



F930A045

- 5 Lift up and fold aside the luggage compartment floor and remove the luggage compartment scuff plates.
- 6 Remove the hatches from the luggage compartment side trims.
- 7 Remove the scuff plates from the side frames.
- 8 Remove the clip for the left-hand side trim and move the trim aside.
- 9 Remove the rear lamp cluster.

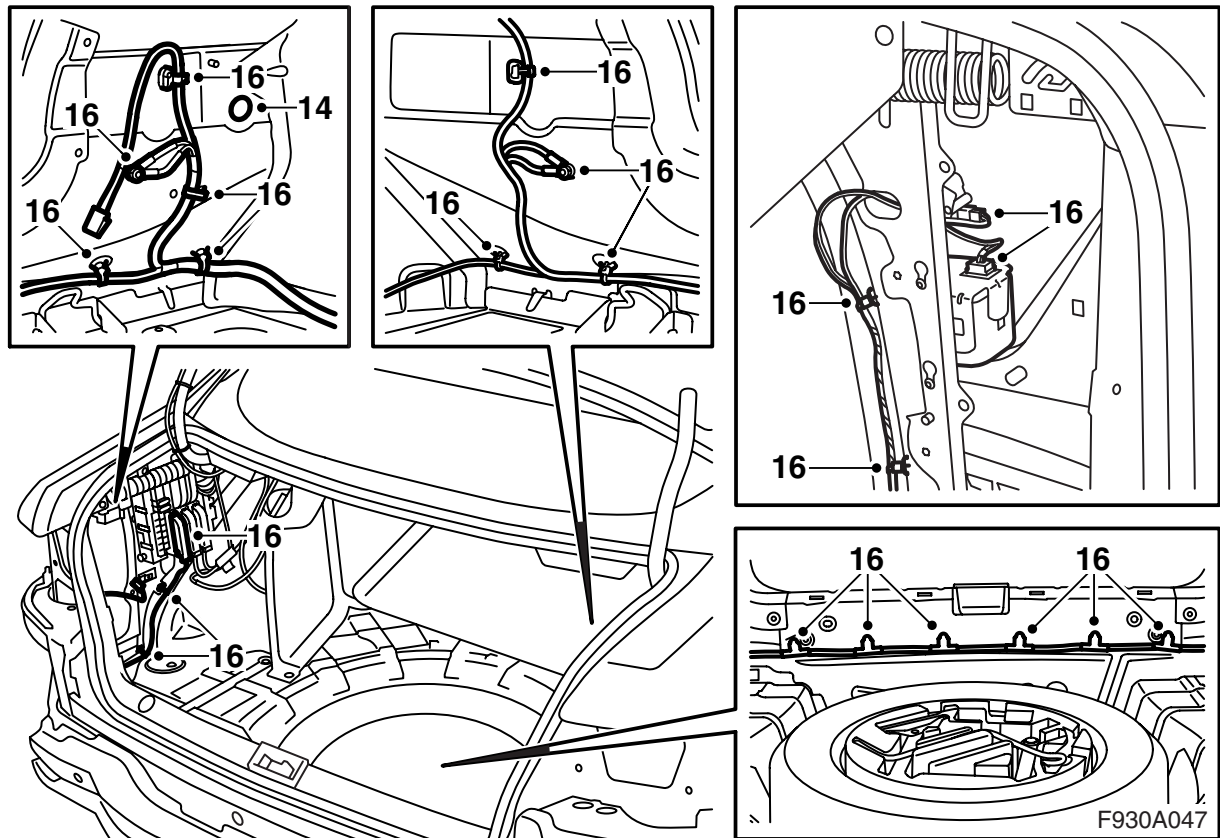


- 10 Remove the bumper shell screws that are located below the rear lamp cluster.
- 11 Remove the bumper bolts at the wheel housings.
- 12 Remove the bumper shell by first pulling the side pieces outwards and then pulling the bumper shell rearwards.

Important

Place the bumper on a clean, soft surface.

- 13 Remove the sound insulation from behind the right-hand wheel housing.

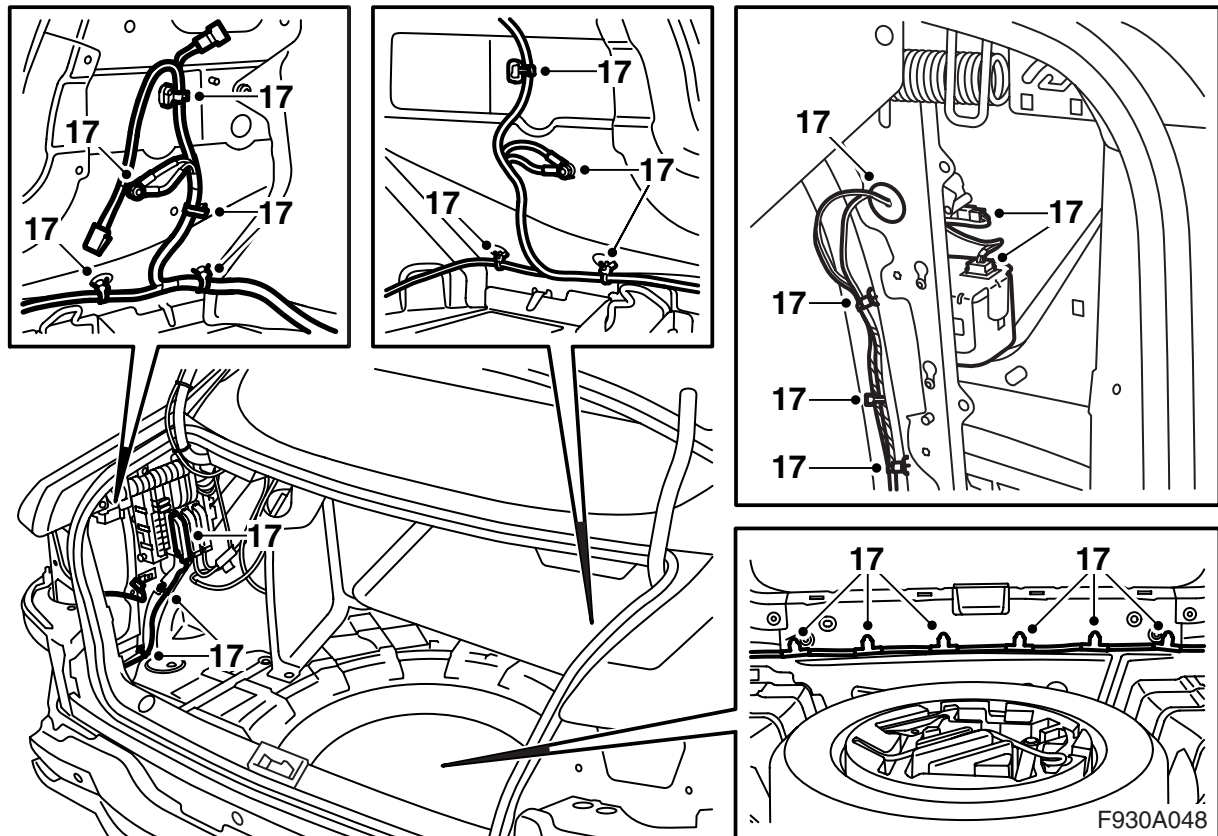


- 14 Remove the rubber plug from under the left-hand rear light.
- 15 Remove the console in which such equipment as a CD changer may be fitted. Disconnect the connections to any equipment in the console.

⚠ WARNING

The visible red light is a class 1 laser. Do not look directly into the optical fibre or the control module connector at close range. A distance of less than 20 mm between your eyes and the light source may cause eye injury.

- 16 Remove the rearmost connector (blue) from the rear electrical centre. Make a note of how the rear wiring harness is connected and then remove it.

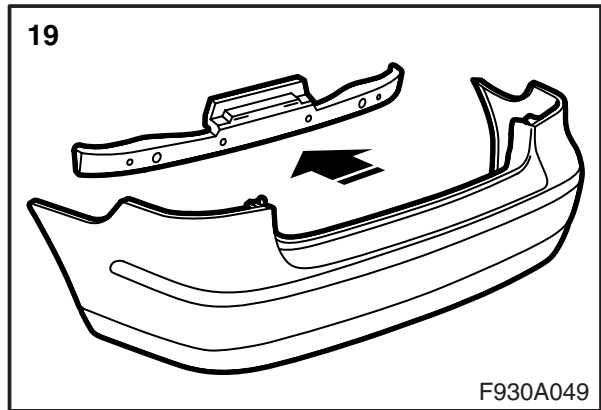
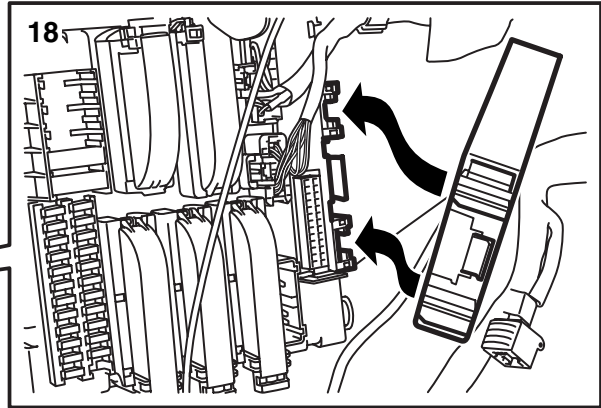
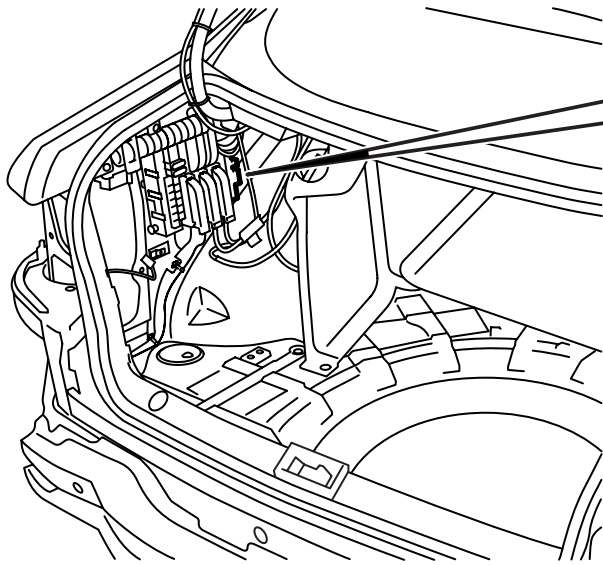


17 Fit the new wiring harness.

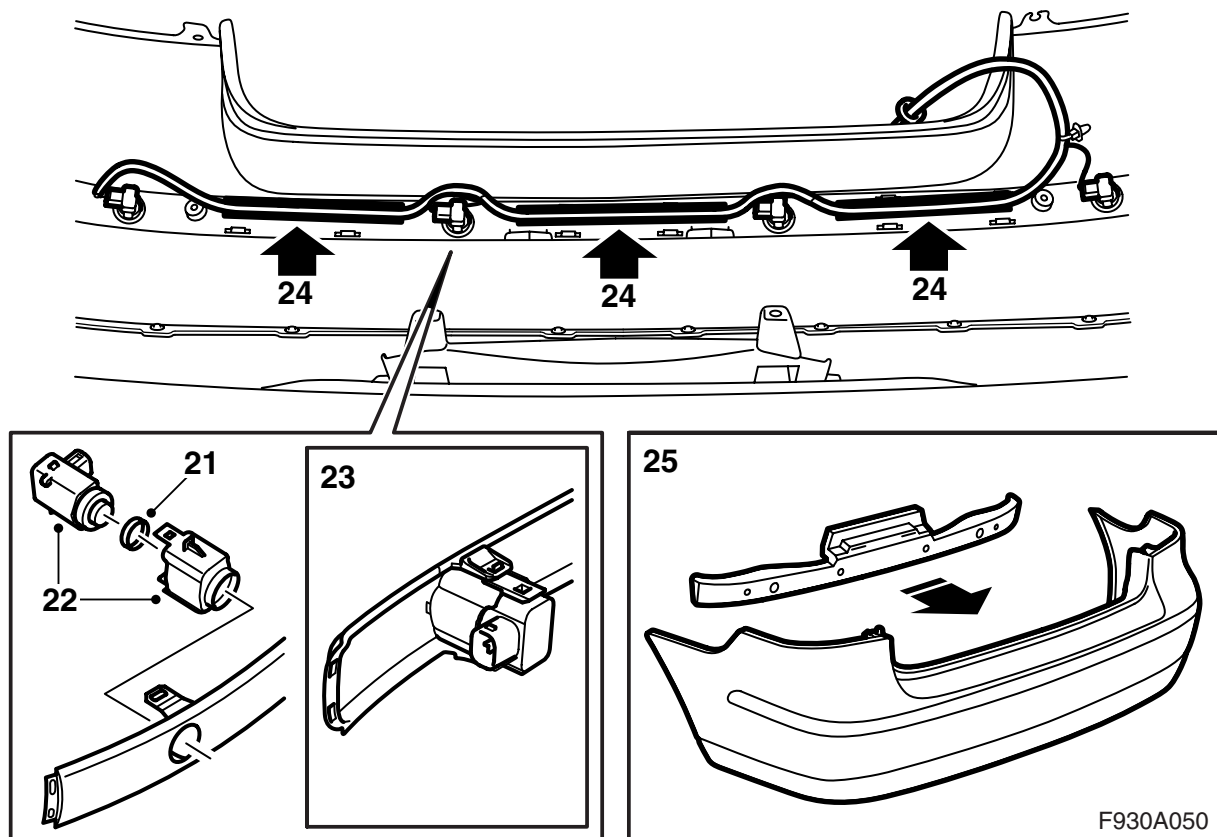
Important

The harness attachment under the rear light should not be fitted yet as the sound insulation uses the same attachment.

Connect the wiring harness with reference to the notes from the preceding point. Fit a new dust cover and secure the harness components with a cable tie.



- 18 Plug in the control module and fit it onto the mounting point on the rear electrical centre.
- 19 Remove the support from the bumper shell.

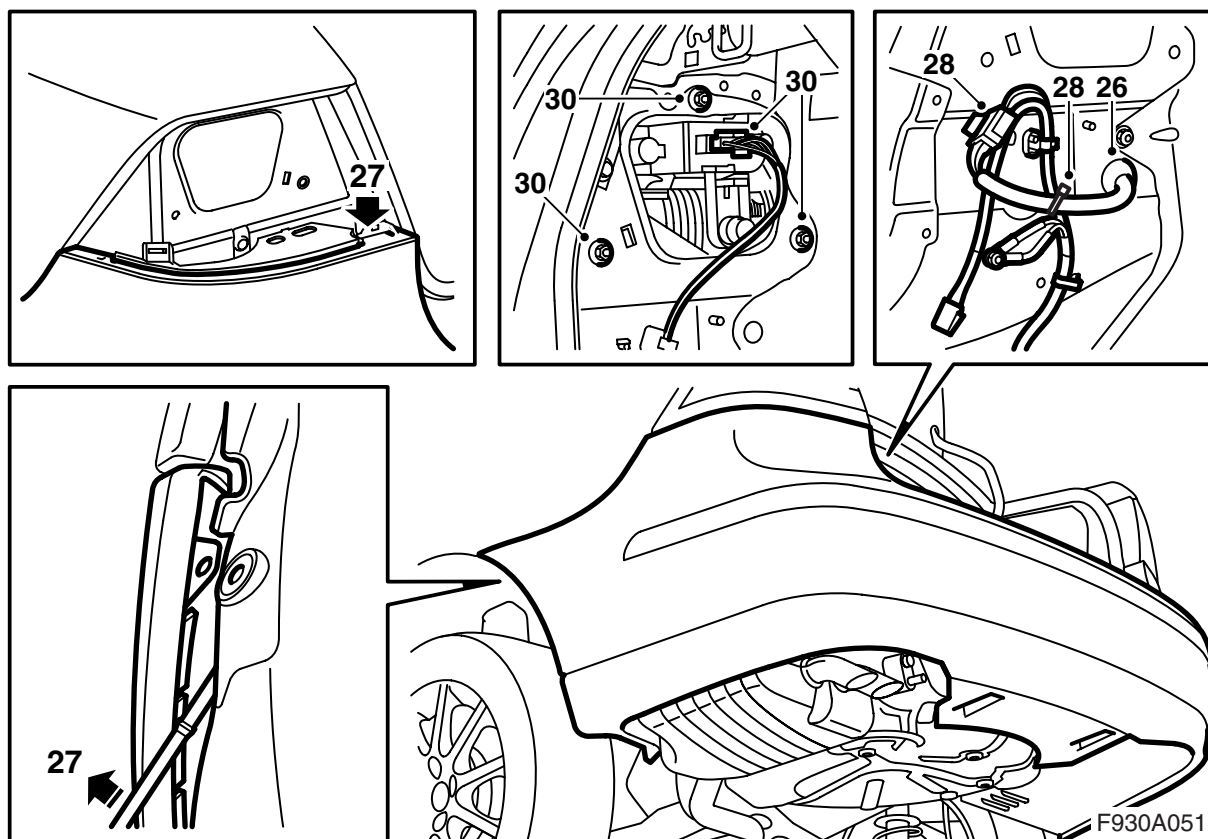


- 20 Fit the bumper-shell trim-moulding with the help of the guide tabs and clip in the hooks, beginning at the centre and working outwards.
- 21 Fit the seals to the sensors.
- 22 Fit together the distance sensors and the holders.
- 23 Fit the distance sensors to the mountings on the trim moulding.

Important

The connector sockets on the sensors should point towards the right-hand side of the vehicle.

- 24 Connect the sensor wiring harness to the sensors and fit it into the slots in the bumper shell.
- 25 Fit the support to the bumper shell.

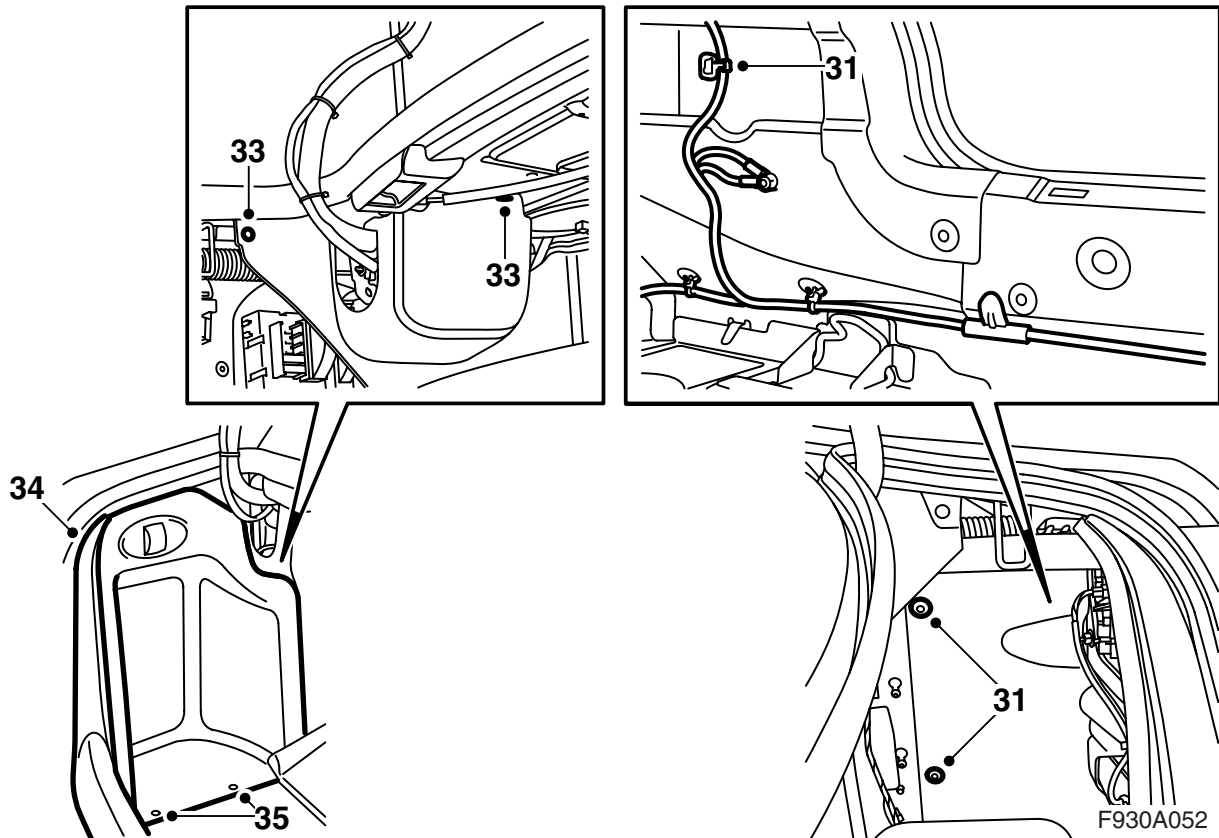


- 26 Lift up the bumper shell and thread the wiring harness through the hole under the left-hand rear light. Fit the grommet.
- 27 Fit the two tabs of the bumper shell under the holders and the outer corners between the wheel arch liner and the holder at the wheel housings. Press the bumper shell into place.

⚠ WARNING

Check that the wiring harness is not pinched. Incorrect fitting can damage the wiring harness and cause a short-circuit/fire.

- 28 Plug in the parking assistance harness connector and fit the connector into the hole beside the left-hand rear light. Fasten the wiring harness with a cable tie.
- 29 Fit the bumper shell screws which are located below the rear lamp cluster.
- 30 Fit and connect the rear lamp cluster. Check the fit against the boot lid moulding.

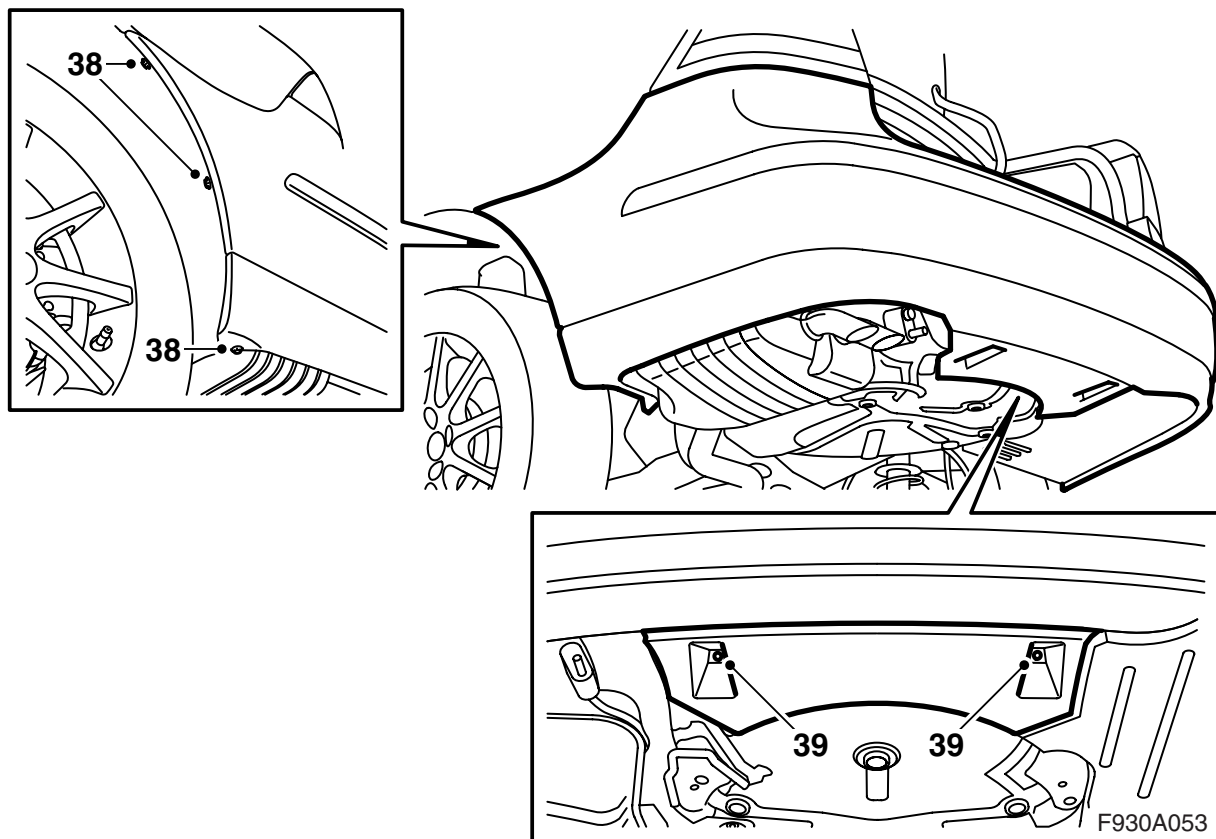


- 31 Fit the sound insulation behind the right-hand wheel housing and snap into place the harness fastening under the right-hand rear light.
- 32 Fit the console in which such equipment as a CD changer may be fitted. Plug in the connections to any equipment in the console.

⚠ WARNING

The visible red light is a class 1 laser. Do not look directly into the optical fibre or the control module connector at close range. A distance of less than 20 mm between your eyes and the light source may cause eye injury.

- 33 Fit the left-hand side trim.
- 34 Fit the scuff plates to the side frames.
- 35 Fit the hatches in the luggage compartment side trims.
- 36 Fit the scuff plates and fold down the luggage compartment floor.



- 37 Raise the car.
- 38 Fit the bumper bolts at the wheel housings.
- 39 Fit the two nuts holding the rear bumper air shield against the body.
- 40 Lower the car.
- 41 Close the boot lid.
- 42 Check the fit of the bumper. Adjust as necessary.
- 43 Connect the negative battery cable.
- 44 Adjust the time and date.
- 45 Synchronise the remote control code by putting the key in the ignition.

Important

This must be carried out with all remote controls, otherwise they will not work.

- 46 Activate the window lifts' pinch protection by running the side windows up and down twice. A sound is made to verify activation.
- 47 Connect the diagnostic tool, select car and model year, select "All", select "Add/Remove", select the accessory and then "Add".

Note

The diagnostic tool needs to obtain a security code in TIS at certain times. Information on what to do will be displayed on the diagnostic tool screen.