

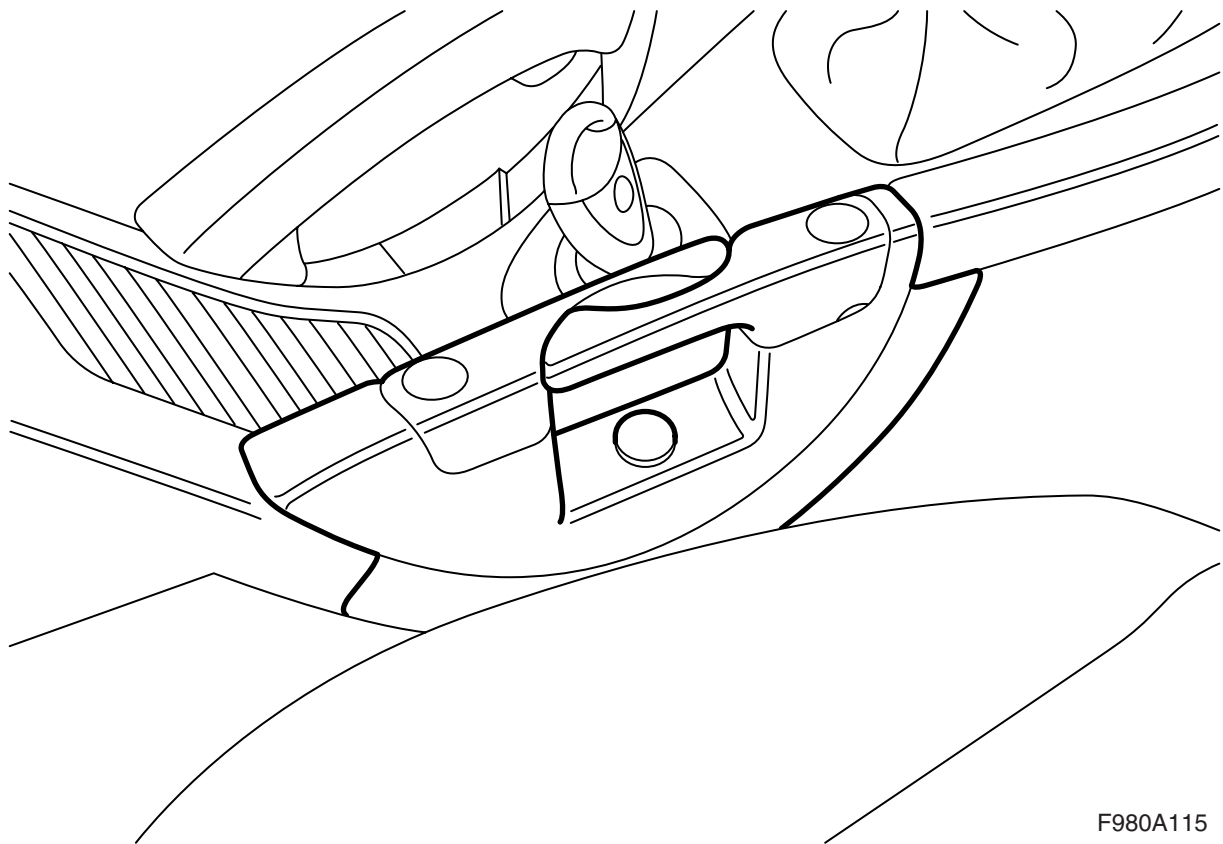


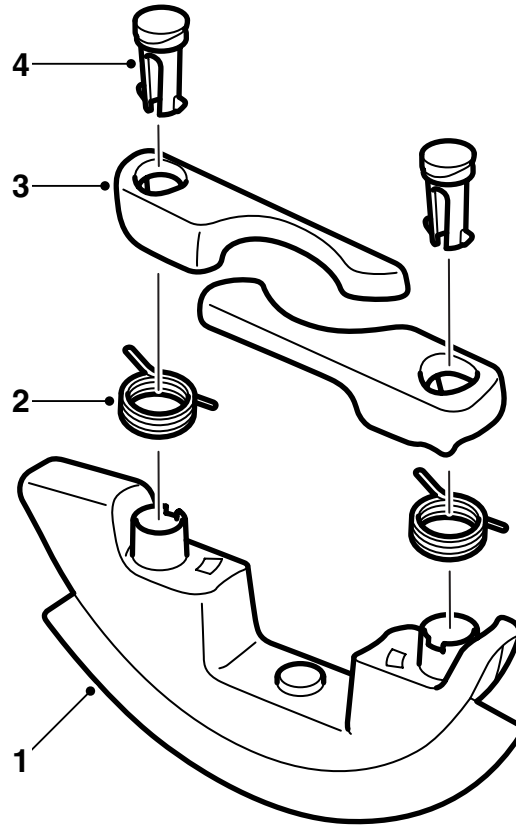
**MONTERINGSANVISNING · INSTALLATION INSTRUCTIONS
MONTAGEANLEITUNG · INSTRUCTIONS DE MONTAGE**

Saab 9-3 M03-

Cup holder

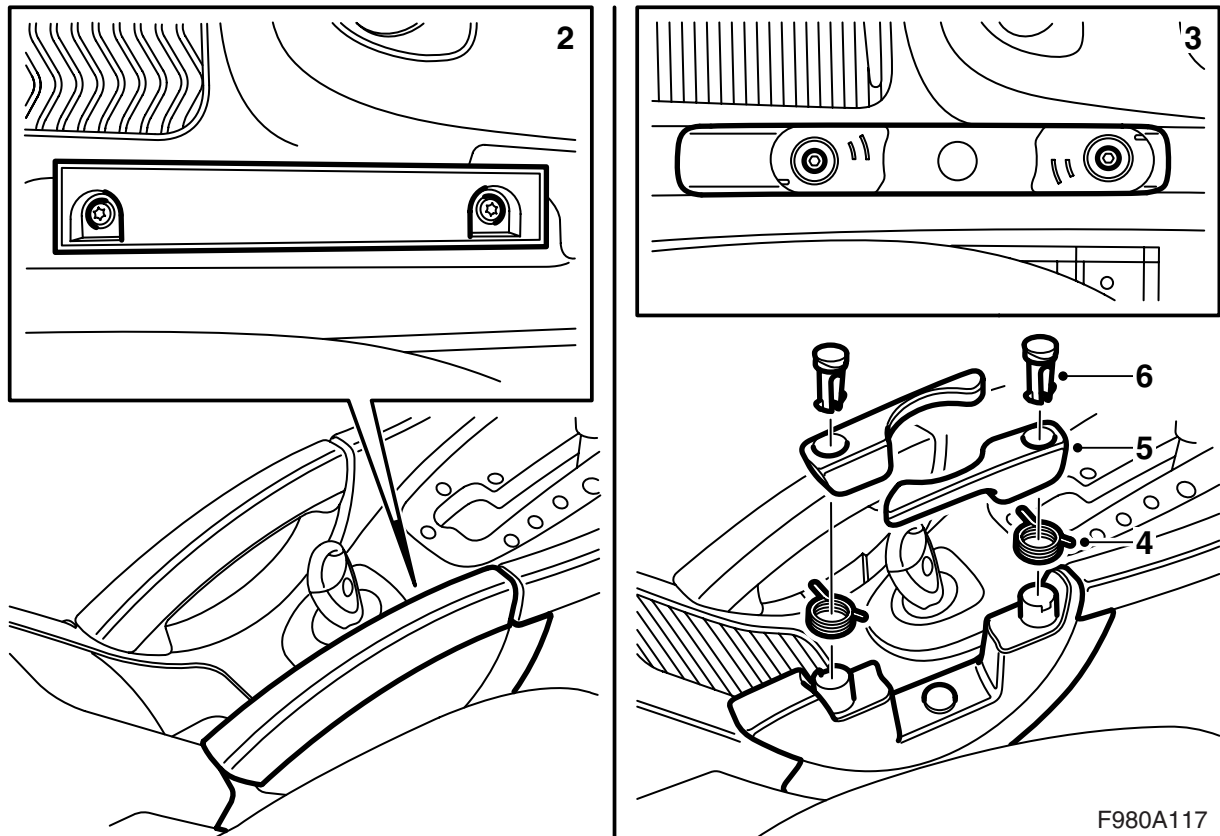
Accessories Part No.	Group	Date	Instruction Part No.	Replaces
12 795 211 12 795 364	9:85-20	Oct 02	12 798 404	12 798 404 Apr 02





F980A116

- 1 Cup holder
- 2 Spring (x2)
- 3 Arm (x2)
- 4 Stopper (x2)



- 1 Pull out the upper part of the spacer.
- 2 Remove the spacer (2 screws).

Important

Use the screws when fitting the mug holder.

- 3 Align and tighten the mug holder to the floor console.
- 4 Fit the springs.

Important

Fit the short spring in the mug holder and the long spring in the mug holder arm.

- 5 Attach the arms.
- 6 Fit the stoppers.
- 7 Hand over the installation instructions to the customer and bring attention to the user instructions.

User instructions

 **WARNING**

Keep the following in mind:

- The mug holder is not intended for glassware or china due to risk for personal injury in the event of an accident.
- Use paper drinking cups, plastic bottles or aluminium cans only.
- Avoid spills, especially with hot liquids.
- The driver should avoid using the mug holder while driving.

Important

Make sure that no liquids are spilled onto the ignition switch when using the mug holder. Soft drinks in particular may cause damage to the ignition switch and loss of function.
