

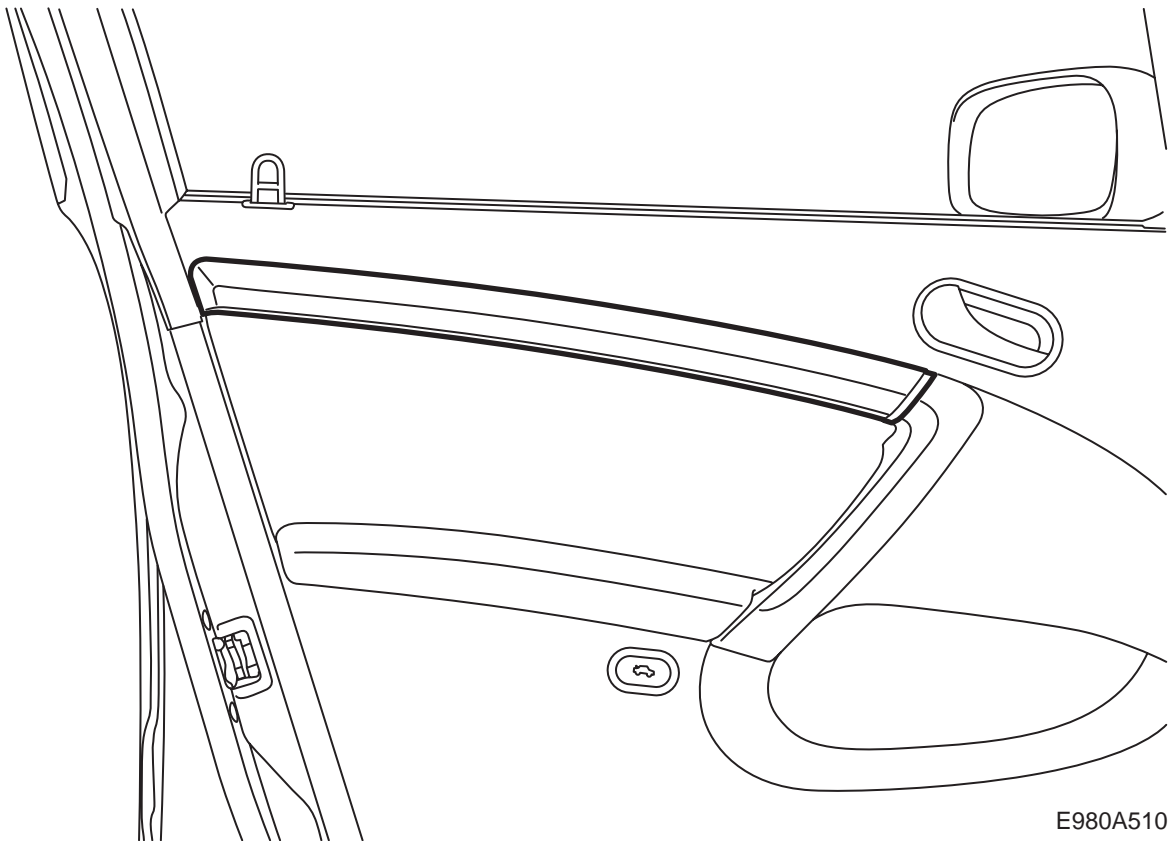


**MONTERINGSANVISNING · INSTALLATION INSTRUCTIONS  
MONTAGEANLEITUNG · INSTRUCTIONS DE MONTAGE**

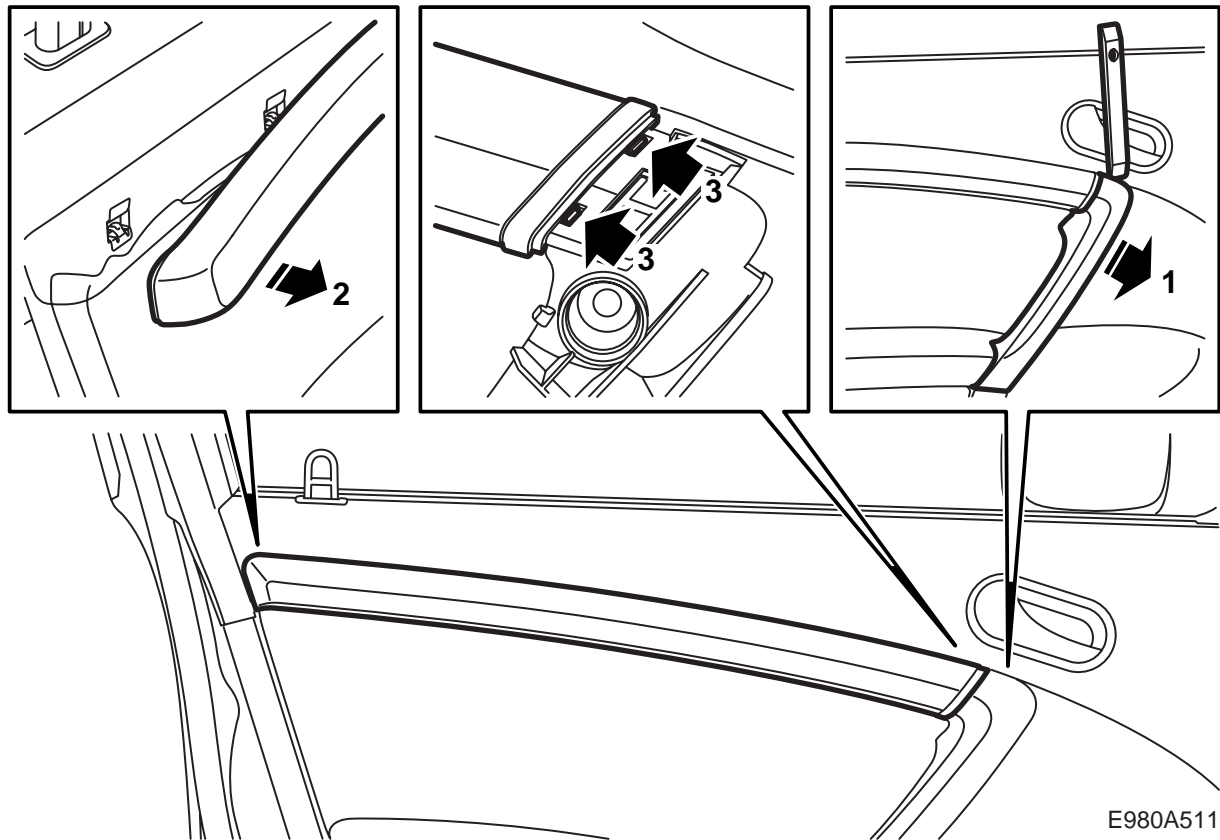
**Saab 9-5 M06-**

Decor strip, door trim

Accessories Part No.	Group	Date	Instruction Part No.	Replaces
32 000 589	9:85-30	May 05	32 025 673	



E980A510

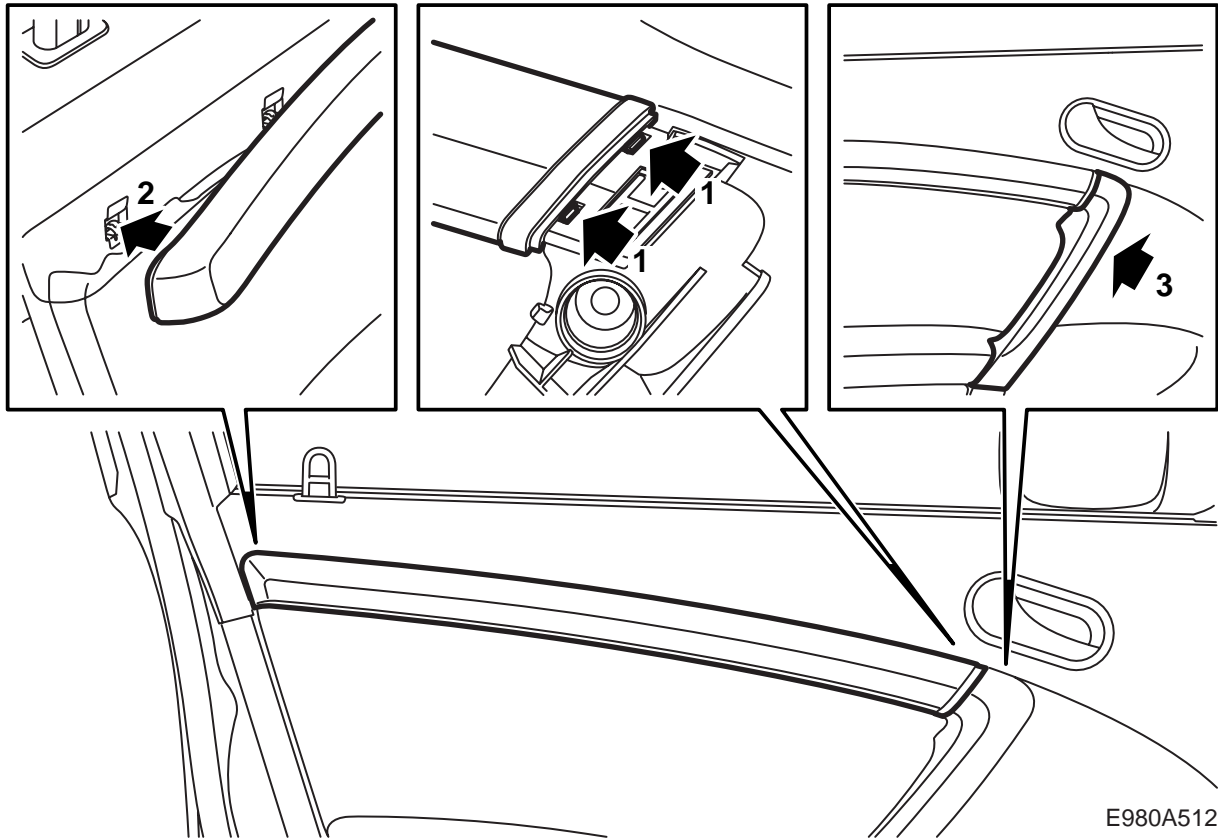


E980A511

## To remove

### Important

- 1 Use removal tool 82 93 474, to avoid damage to the interior equipment.
- 2 Exercise care when the strip is detached so that the plastic studs do not break off.



E980A512

**To fit****Note**

Make sure that the fasteners are in place in the side of the door when the decor strip is fitted (2).