

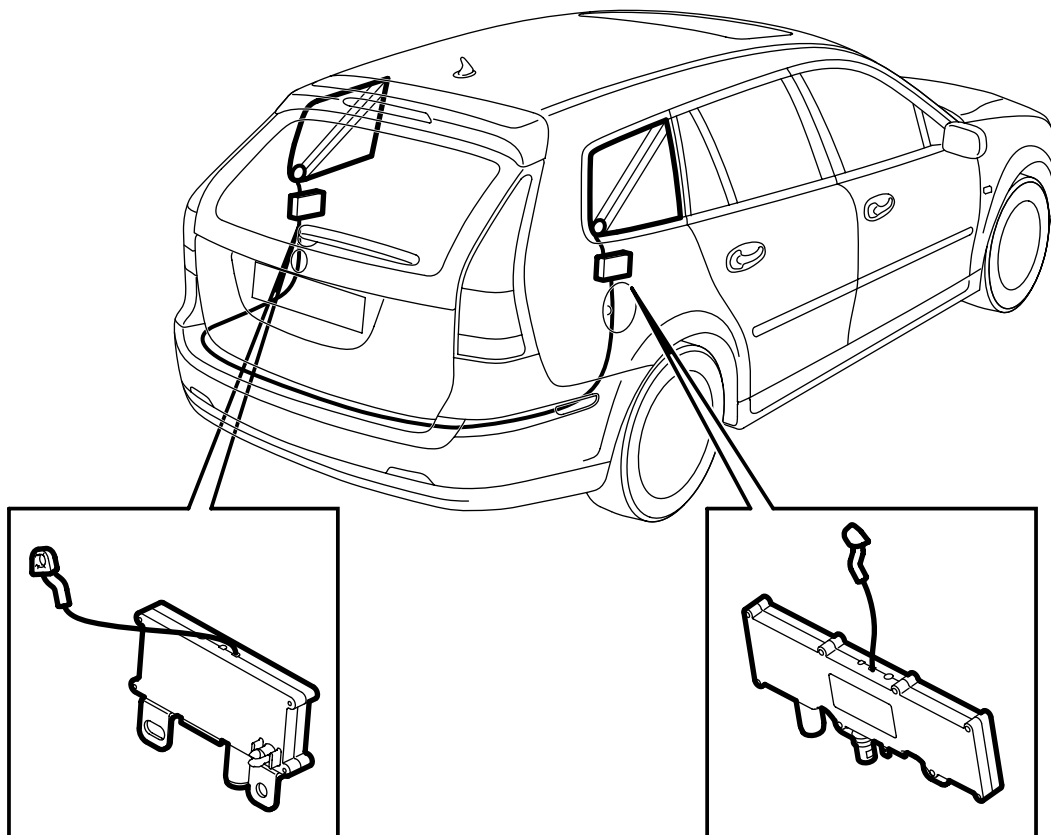


**MONTERINGSANVISNING · INSTALLATION INSTRUCTIONS  
MONTAGEANLEITUNG · INSTRUCTIONS DE MONTAGE**

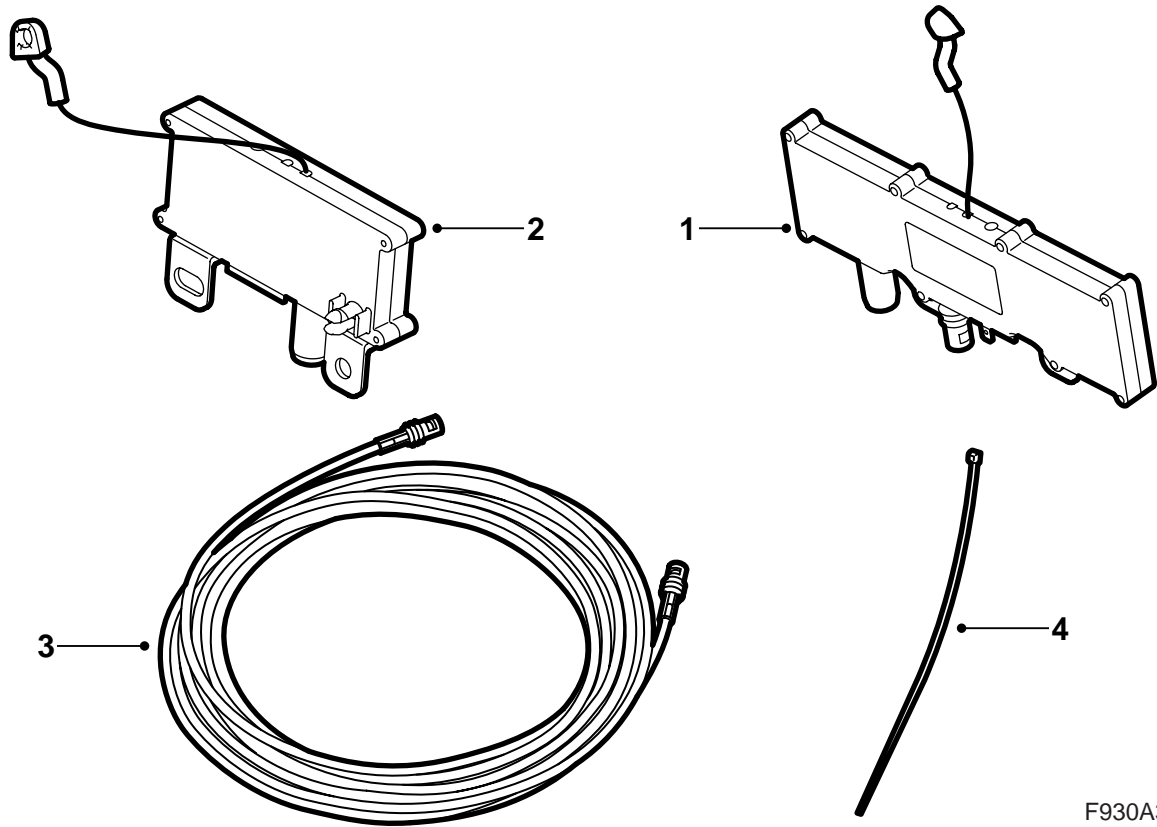
**Saab 9-3 5D M06-**

Antenna amplifier, diversity

Accessories Part No.	Group	Date	Instruction Part No.	Replaces
32 025 554	3:67-38	Jun 05	32 025 567	

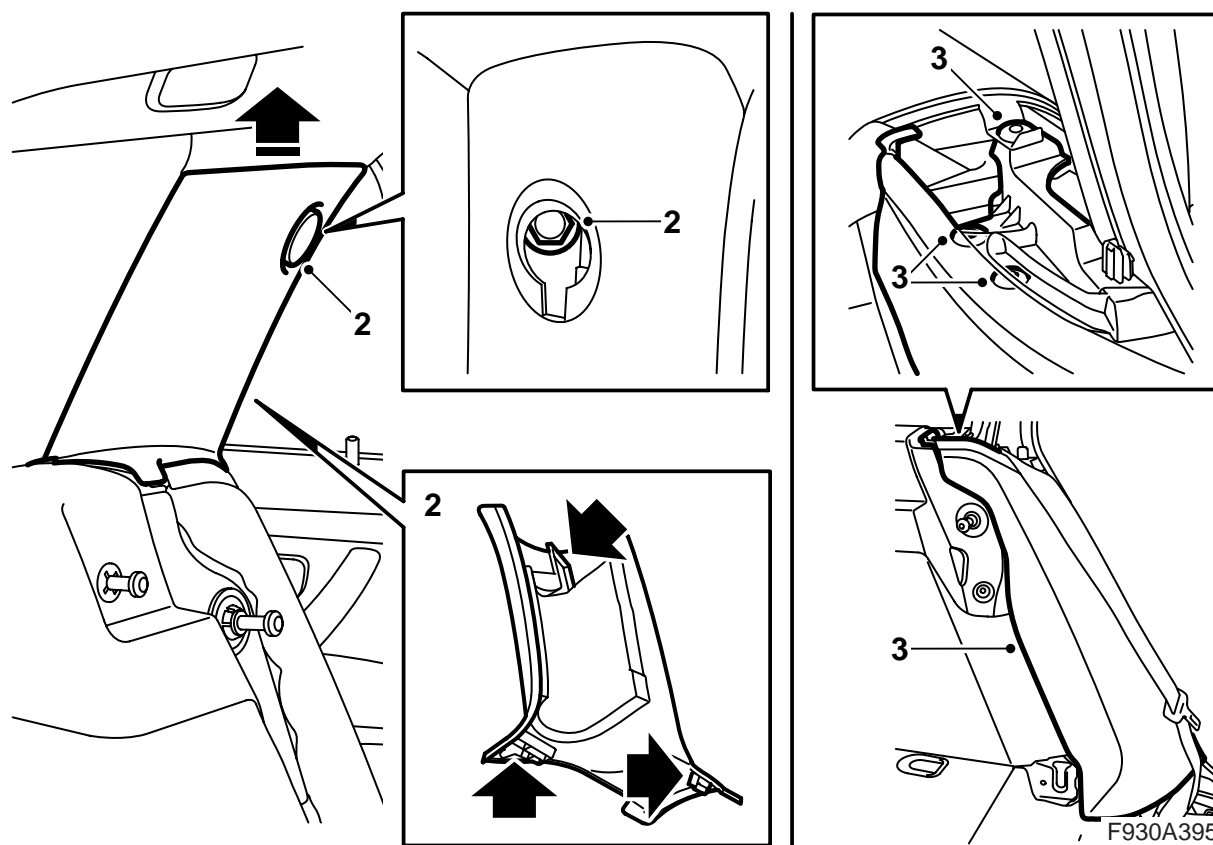


F930A393

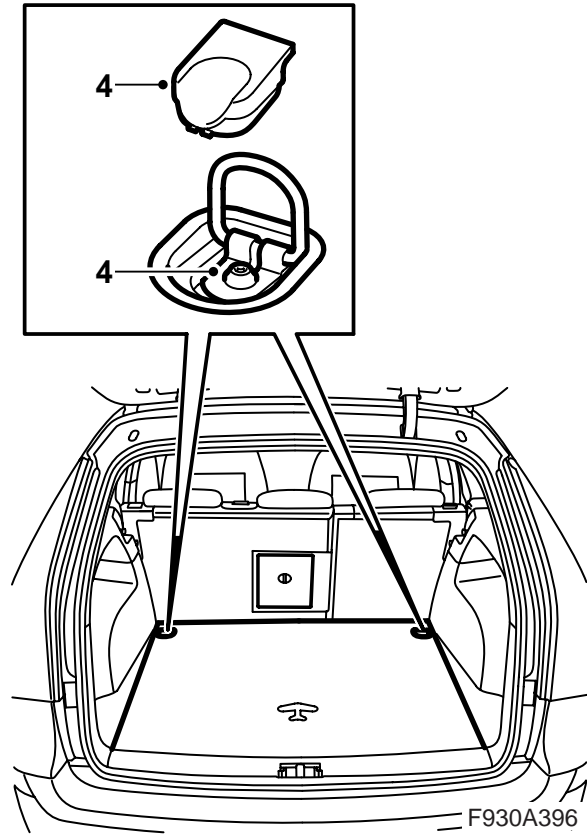
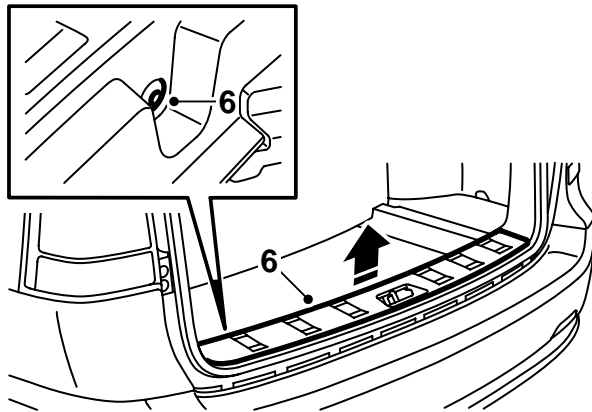


F930A394

- 1 Antenna amplifier, right-hand side
- 2 Antenna amplifier, left-hand side
- 3 Antenna cable
- 4 Cable tie (x13)

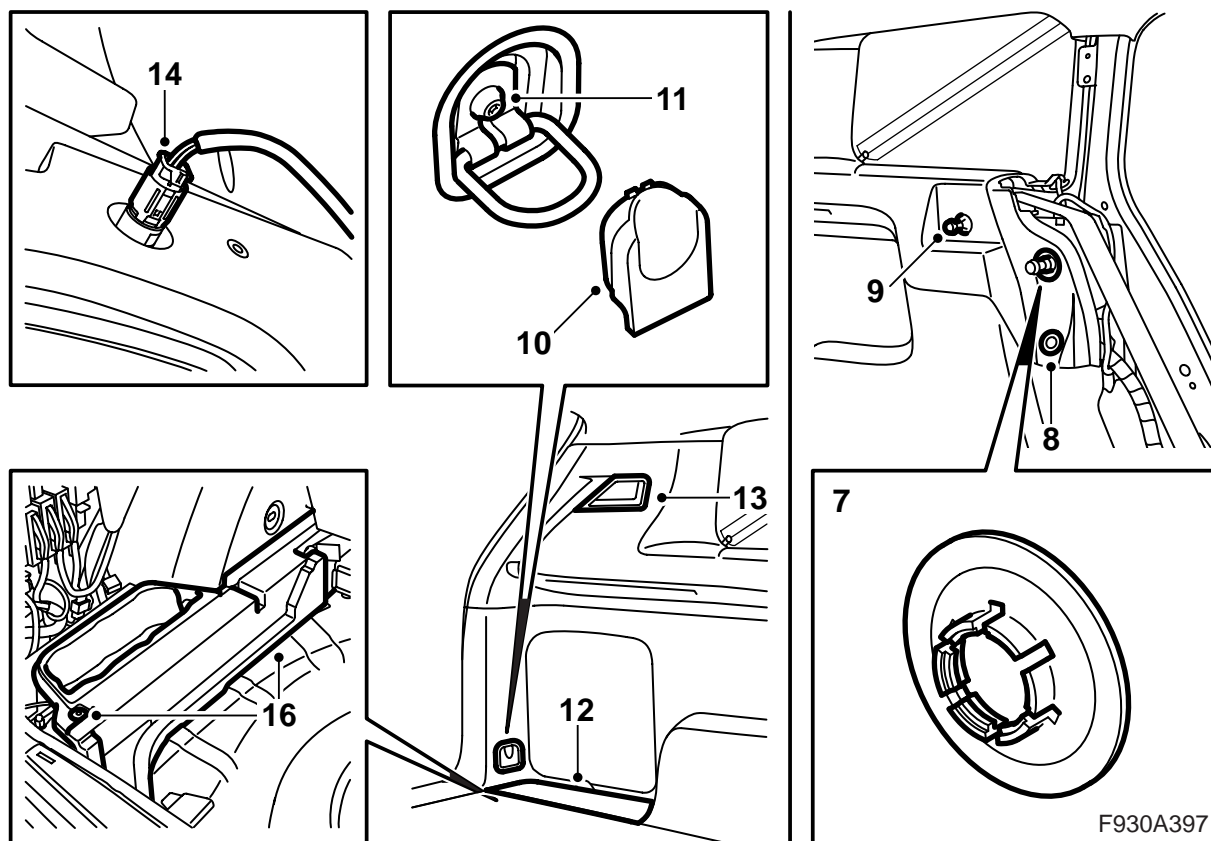


- 1 Fold down the rear seat backrests.
- 2 Remove the left and right-hand C-pillar trim. Use 82 93 474 Removal tool to remove the cover plate.
- 3 Remove the left and right-hand side bolsters. Remove the clips using 82 93 474 Removal tool.



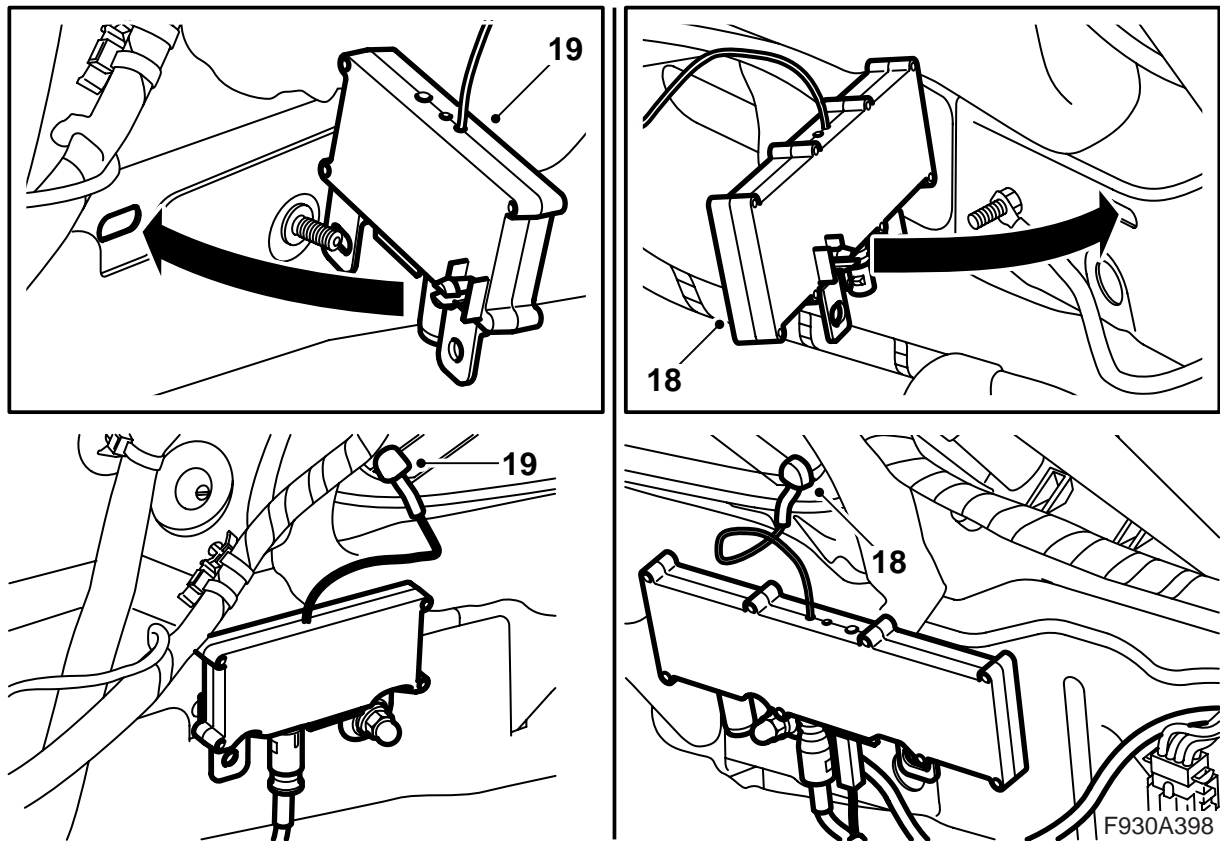
F930A396

- 4 Remove the luggage compartment floor.
- 5 **Cars with subwoofer:** Lift up the subwoofer and secure it with the eyelet.
- 6 Remove the scuff plate.

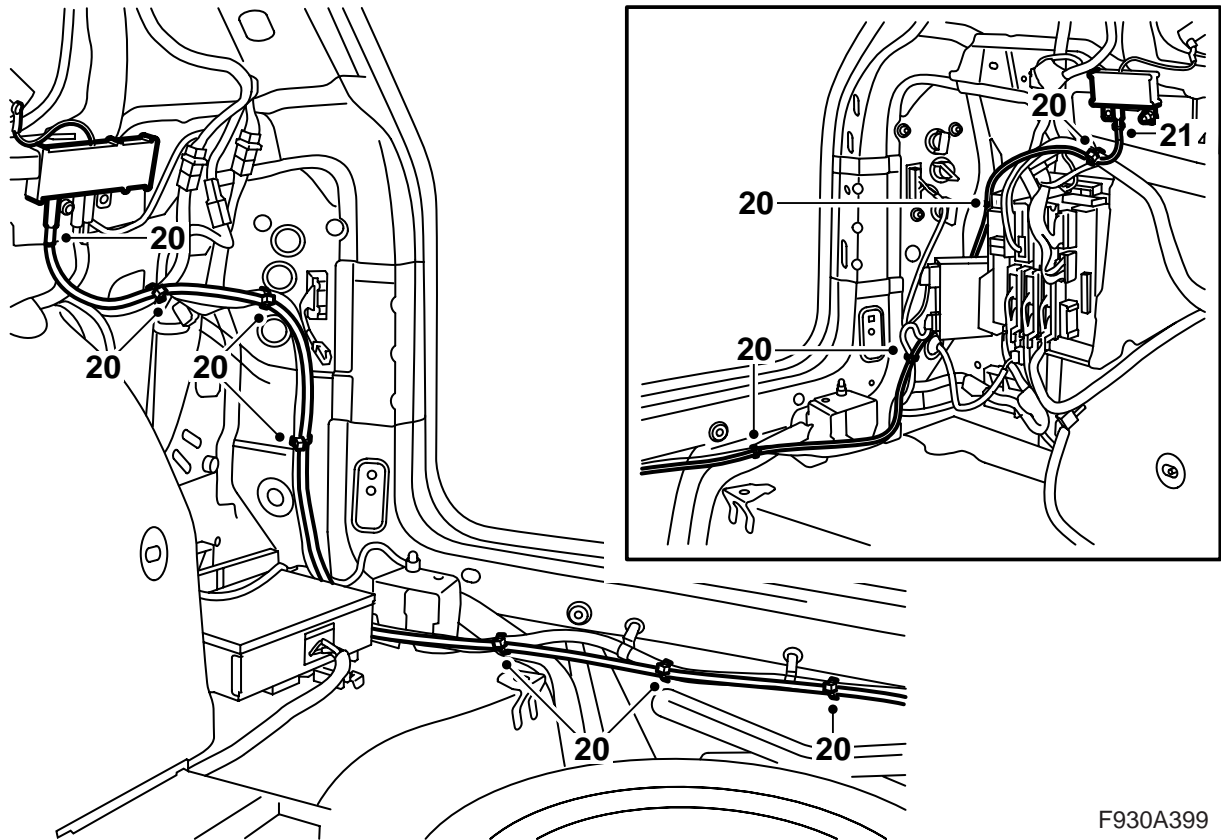


Steps 7-16 must be carried out on both the left and right-hand sides.

- 7 Remove the clip from the mounting in the body. Use a screwdriver.
- 8 Remove the two-stage rivet using 84 71 179 Removal tool, clips.
- 9 Remove the mounting for the cargo guard (if fitted).
- 10 Remove the cover.
- 11 Remove the screw.
- 12 Lift the cover away from over the storage compartment.
- 13 Remove the luggage compartment lighting lens and insert the bulb holder through the hole in the side trim.
- 14 **Right-hand side:** Also unplug the connector to the 12 V socket.
- 15 Remove the trim so that the clips release.
- 16 Remove the foam blocks on the left and right-hand sides.

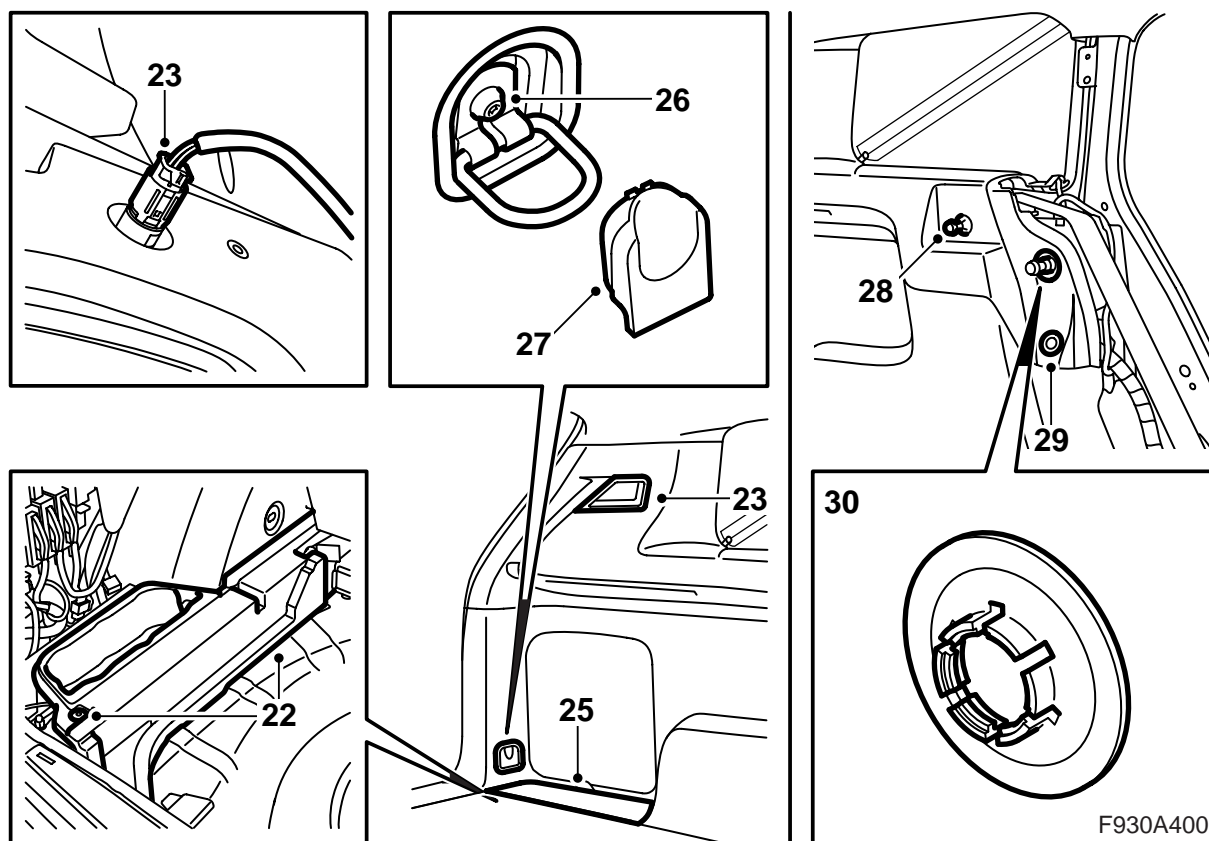


- 17 Remove the existing antenna amplifier on the right-hand side in the luggage compartment.
- 18 Fit the new, larger antenna amplifier on the right-hand side in the luggage compartment. The guide clip on the rear of the antenna amplifier must fit in the side panel hole. Connect the car's cables and the cable to the side window.
- 19 Fit the new, smaller antenna amplifier on the left-hand side in the luggage compartment. The guide clip on the rear of the antenna amplifier must fit in the side panel hole. Connect the cable to the side window.



F930A399

- 20 Connect the installation kit antenna cable to the antenna amplifier on the right-hand side. Position the antenna cable along the existing cable harness on the rear plate forward to the antenna amplifier on the left-hand side. Secure with cable ties.
- 21 Connect the antenna cable to the antenna amplifier on the left-hand side.



Steps 22-30 must be carried out on both the left and right-hand sides.

22 Fit the foam blocks.

23 Fit the luggage compartment lighting.

**Right-hand side:** Also plug in the connector to the 12 V socket.

24 Press the side trim into its clips.

25 Fit the cover over the storage compartment.

26 Fit the screw.

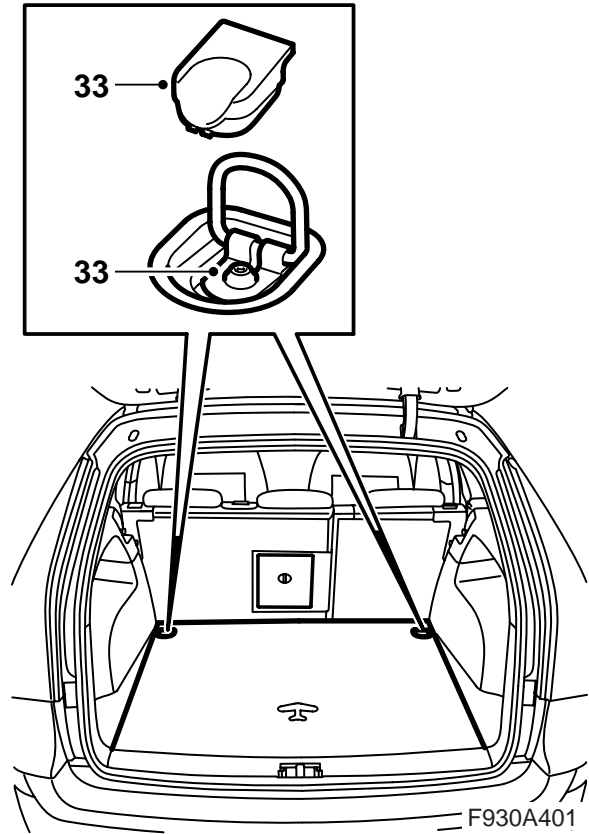
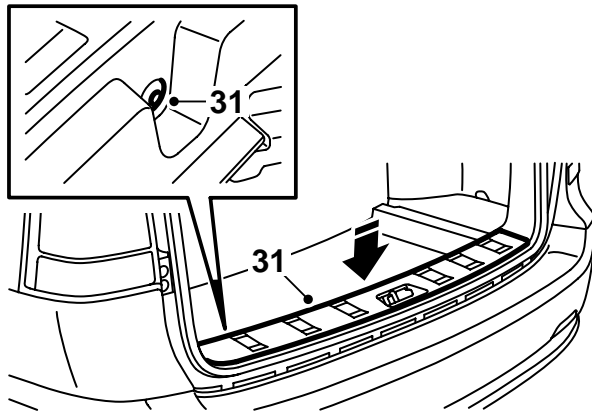
27 Fit the cover.

28 Fit the mounting for the cargo guard (if fitted).

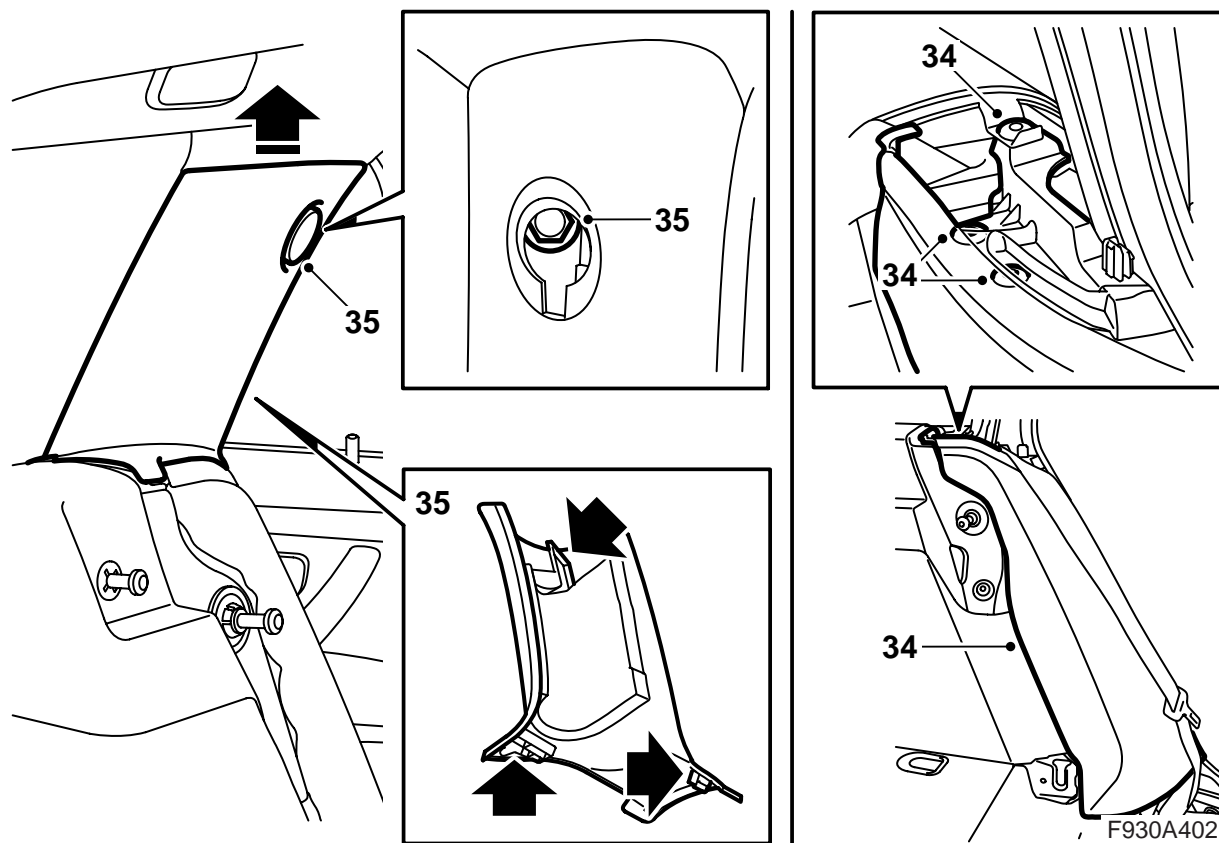
29 Fit the two-stage rivet.

30 Fit the clip to the mounting in the body.





- 31 Fit the scuff plate.
- 32 **Cars with subwoofer:** Fold down the subwoofer and screw it in.
- 33 Fit the luggage compartment floor.



- 34 Fit the left and right-hand side bolsters. Check that the belt is not twisted.
- 35 Fit the left and right-hand C-pillar trim.
- 36 Fold up the backrests.
- 37 Switch on the radio and check its operation.