

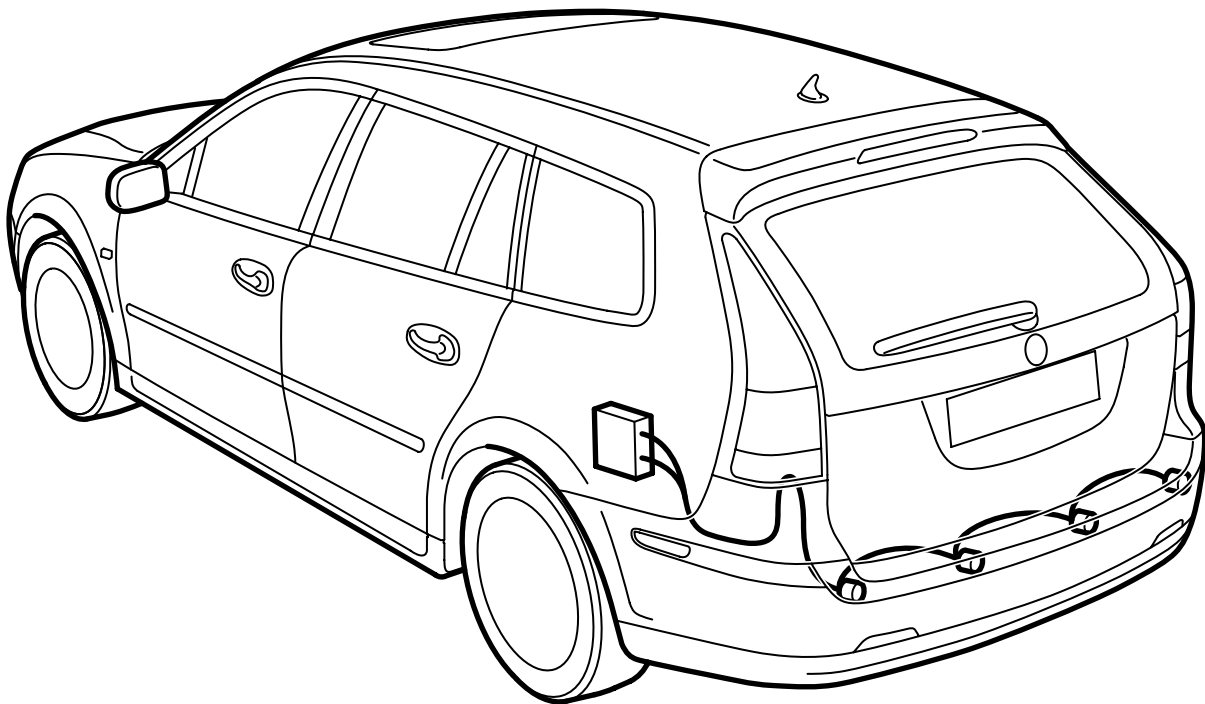


**MONTERINGSANVISNING · INSTALLATION INSTRUCTIONS
MONTAGEANLEITUNG · INSTRUCTIONS DE MONTAGE**

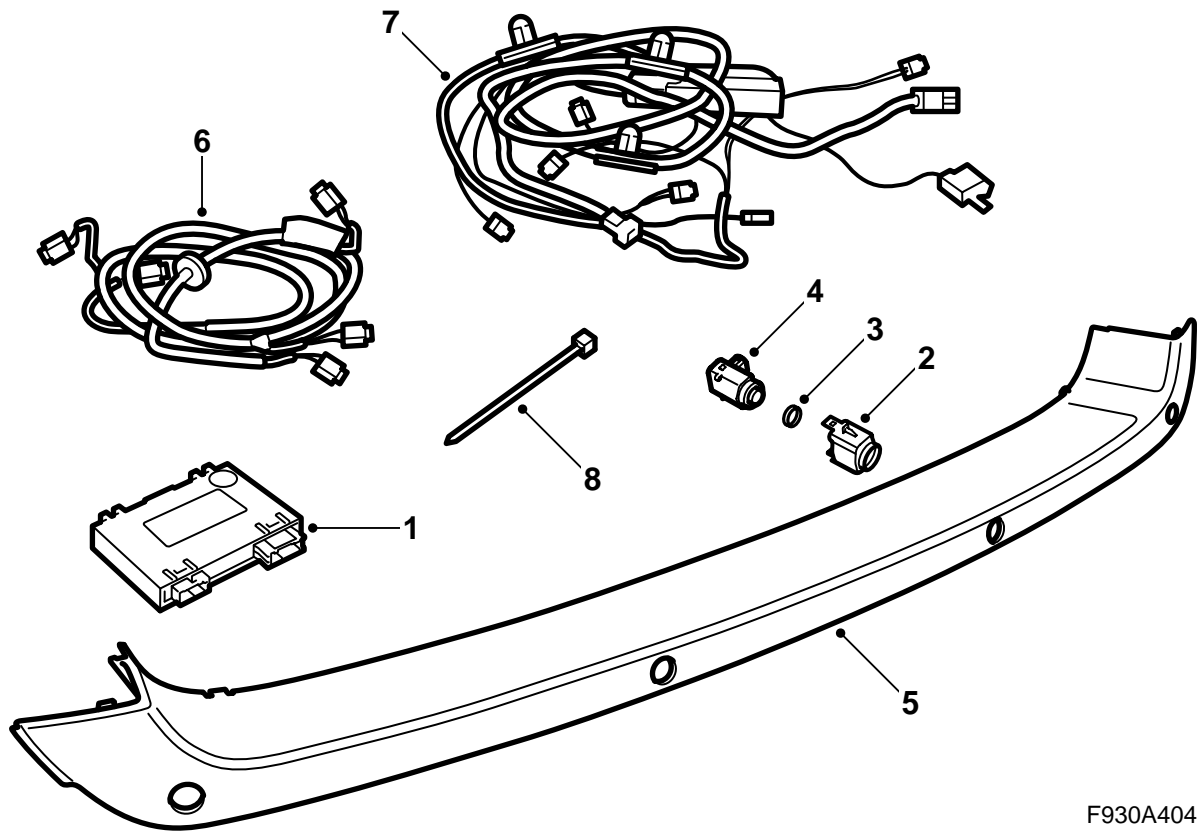
Saab 9-3 5D M06-

Parking assistance (SPA)

Accessories Part No.	Group	Date	Instruction Part No.	Replaces
32 025 603	9:40-05	Sep 05	32 025 604	

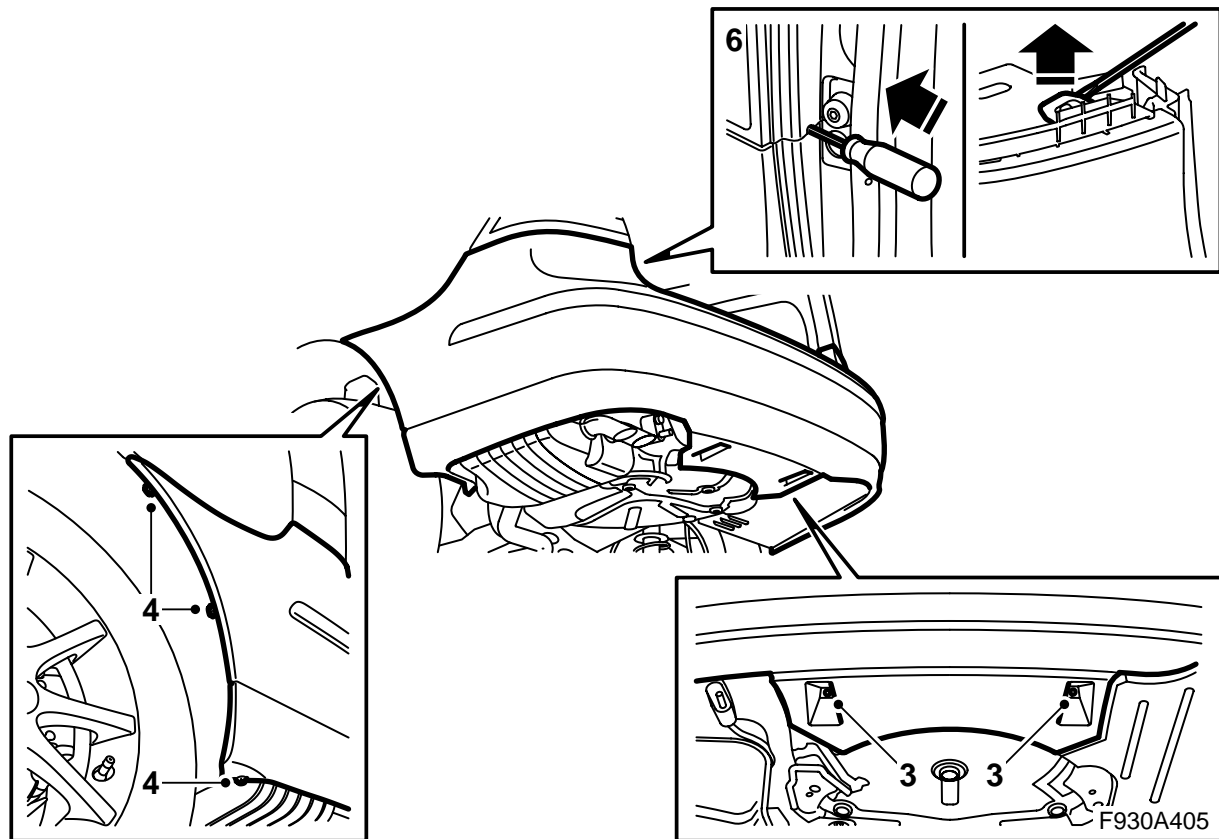


F930A403

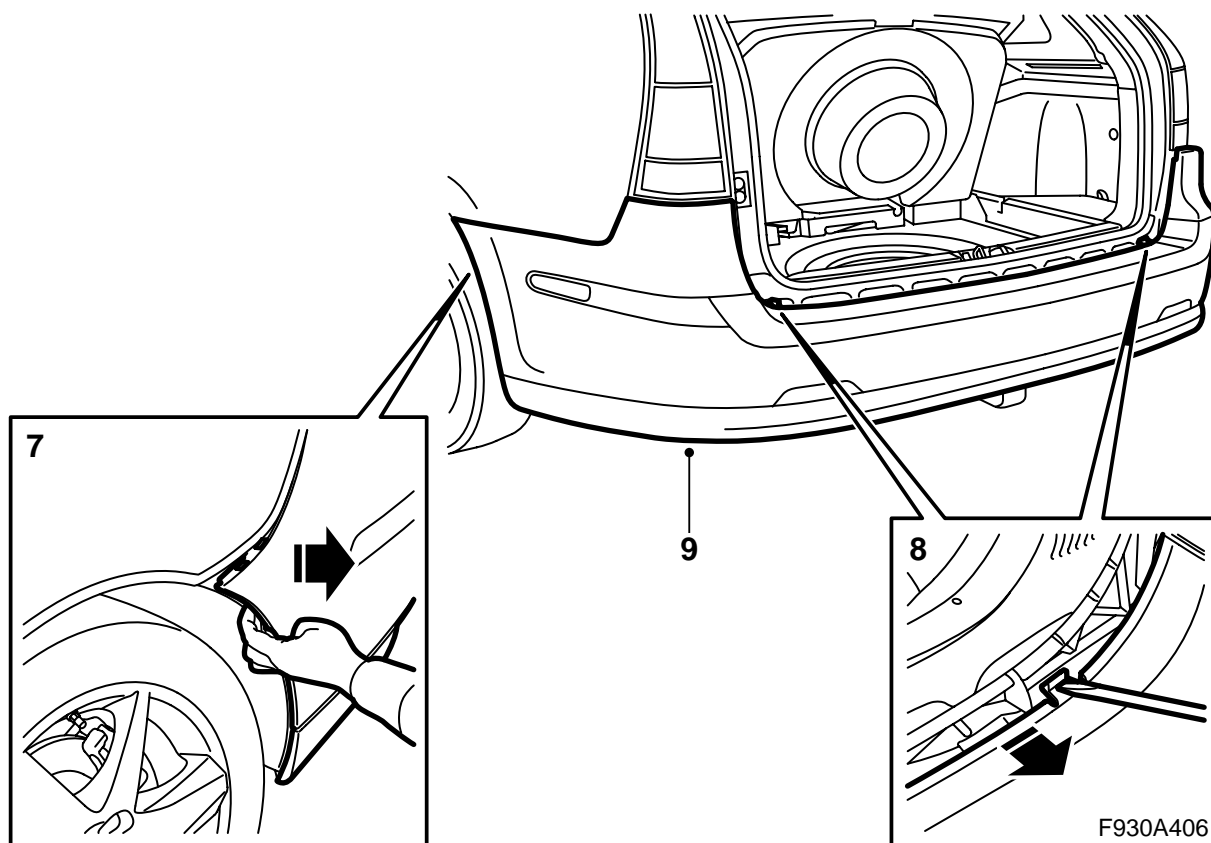


F930A404

- 1 SPA control module
- 2 Holder (x4)
- 3 Seal (x4)
- 4 Distance sensor (x4)
- 5 Protective shell, bumper
- 6 Wiring harness, distance sensor
- 7 Wiring harness, rear harness
- 8 Cable tie (x4)



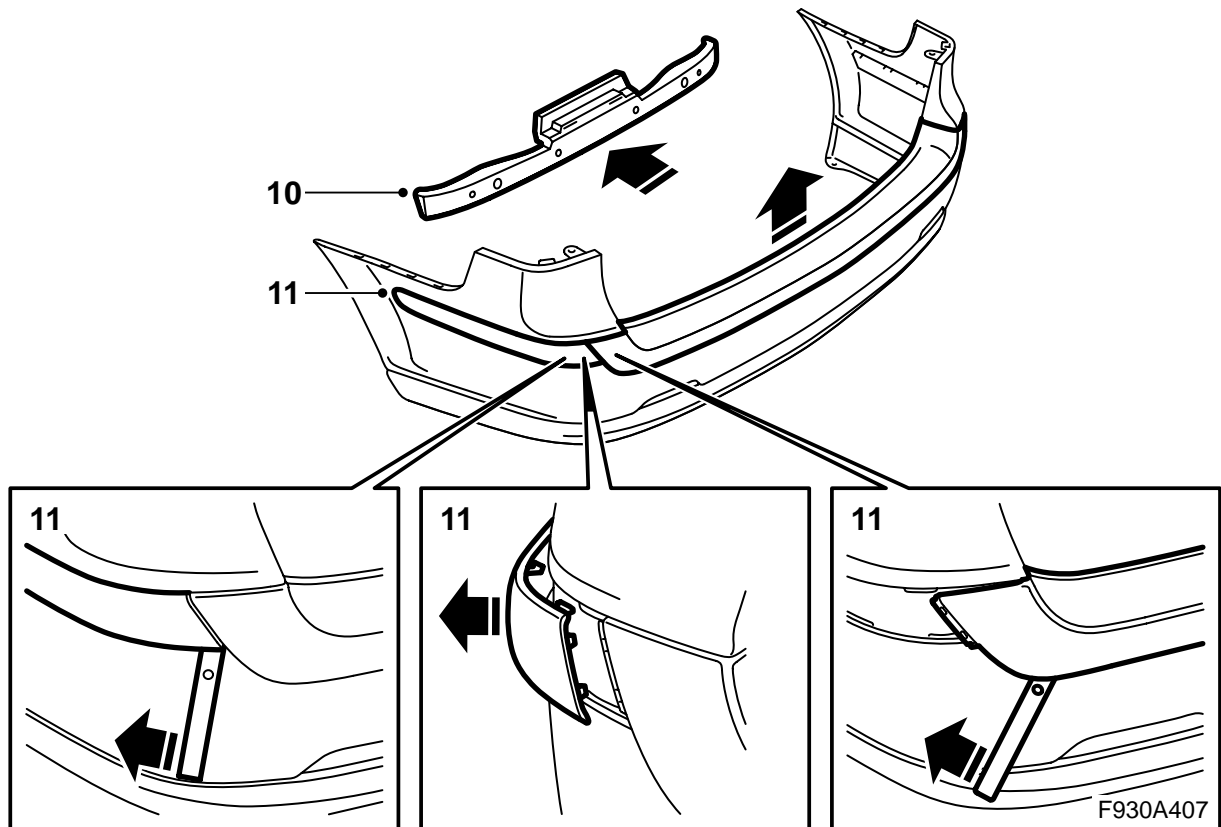
- 1 Turn the ignition key to the OFF position and remove the key.
- 2 Raise the car.
- 3 Remove the spoiler's centre nuts.
- 4 Remove the screws to the wheel housing.
- 5 Lower the car and open the tailgate.
- 6 Insert a screwdriver in the hole to reach under the catch for the bumper shell. Bend up using the screwdriver to release the catch.



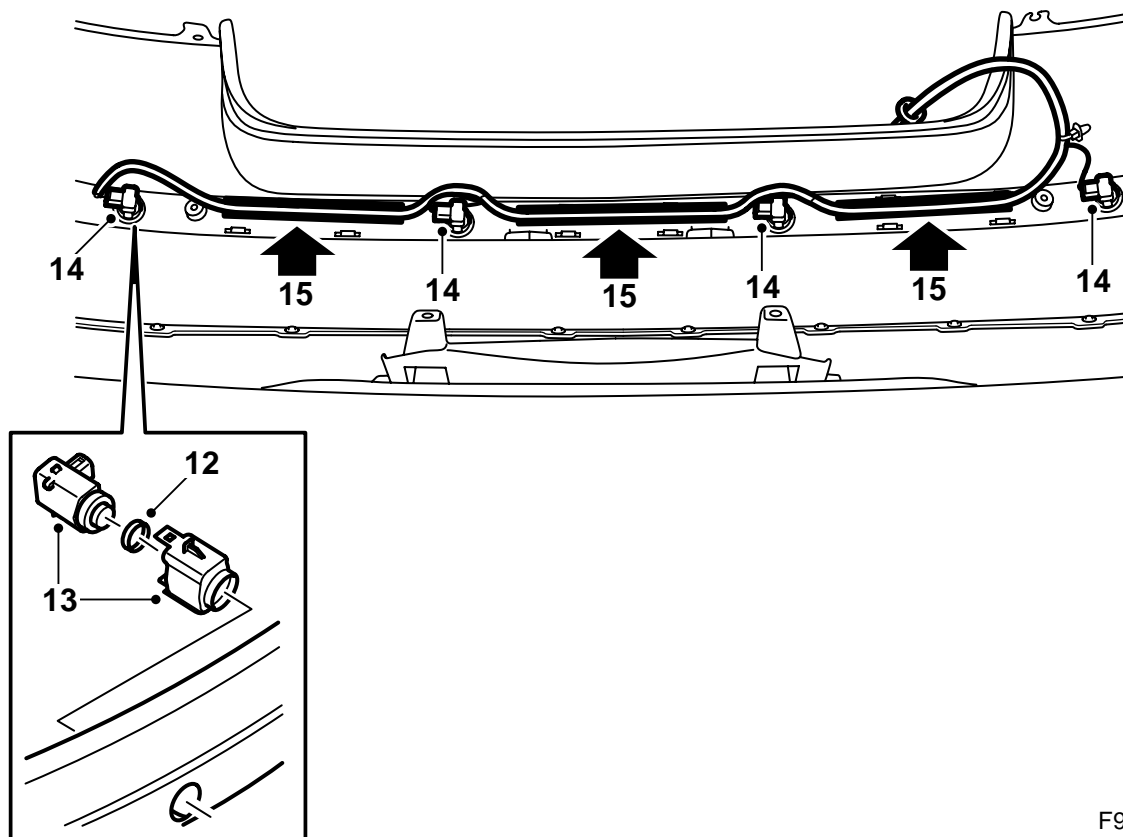
- 7 Pull the bumper shell away from the holders.
- 8 Release the catches using a screwdriver. Detach the shell from the moulding.
- 9 Lift off the bumper shell.

Important

Place the bumper on a soft, clean surface.



- 10 Pull the cellular block from the bumper shell lugs.
- 11 Remove the protective corner mouldings and the protective shell by inserting tool 82 93 474 under the shell to release the clips.

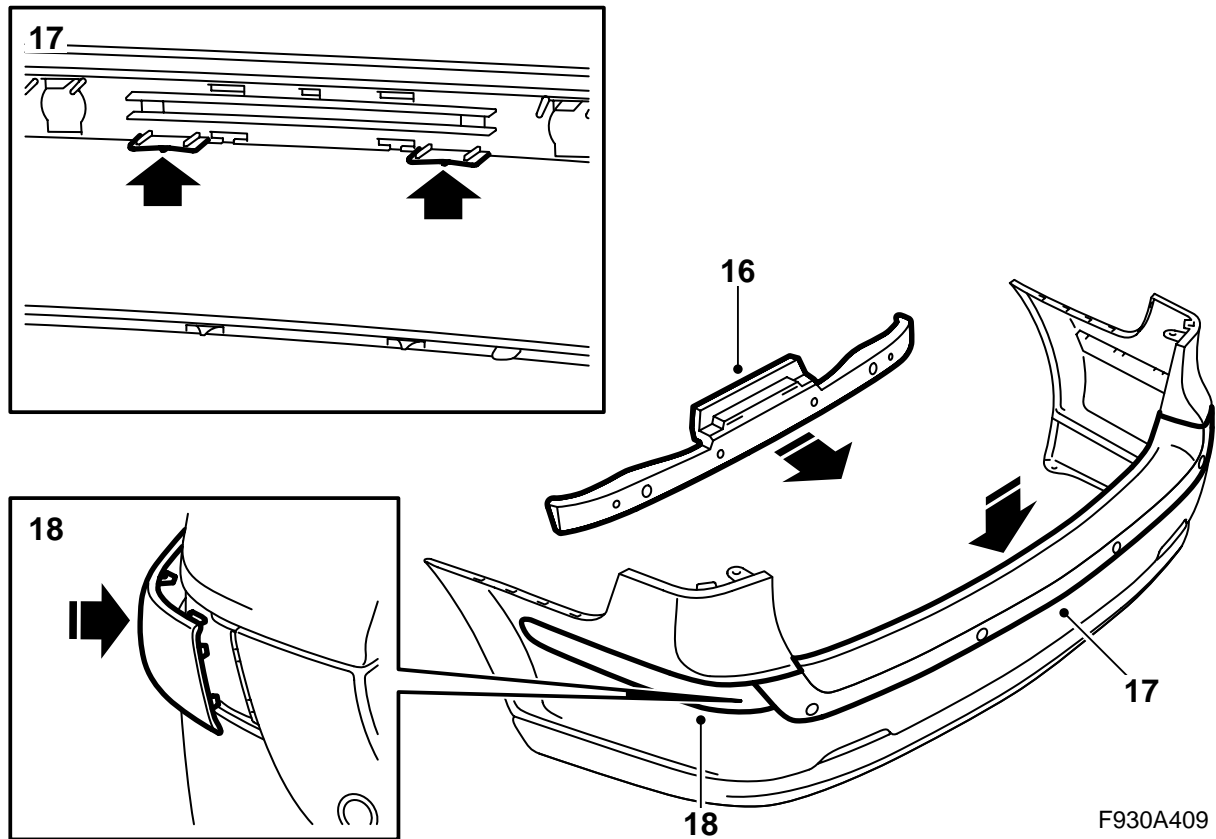


F930A408

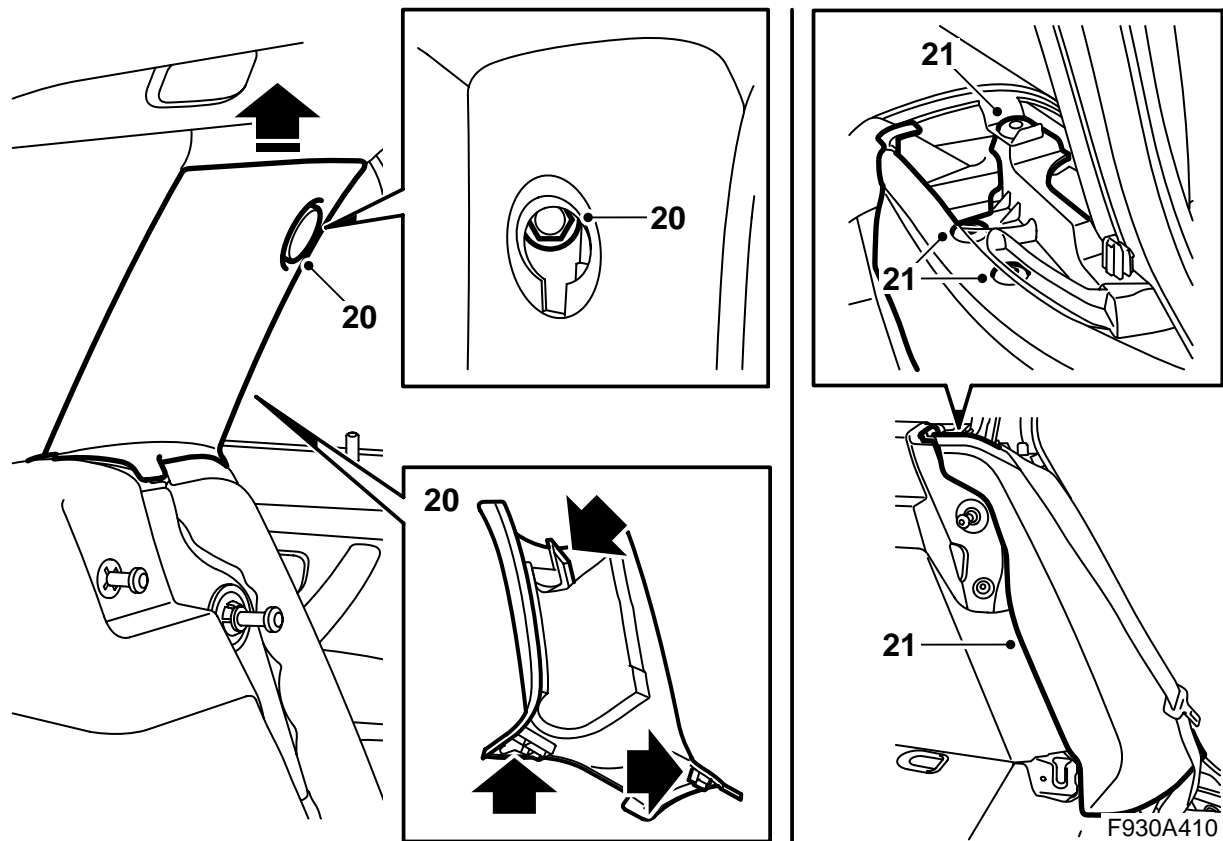
- 12 Fit the seals to the sensors.
- 13 Fit together the distance sensors and the holders.
- 14 Fit the distance sensors in the bumper shell. Turn the connector in the right direction, see illustration.
- 15 Connect the kit's wiring harness to the sensors and pull it along the shell. The connector must come out toward the left-hand light cluster.

 **WARNING**

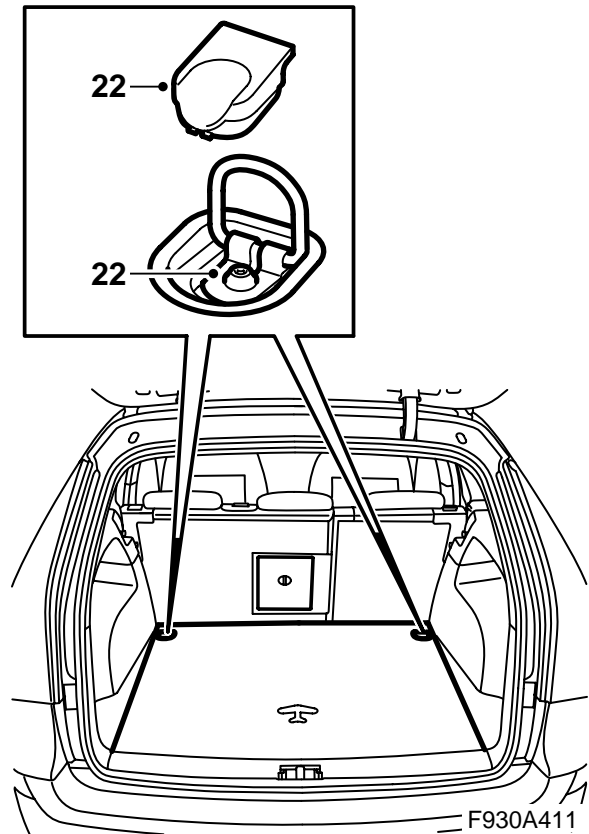
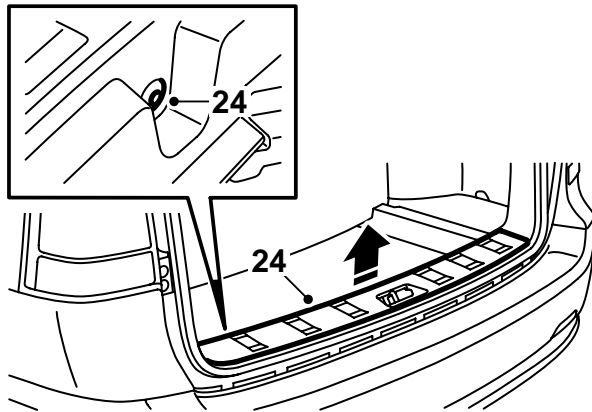
Check that the wiring harness is not pinched. Incorrect fitting can damage the wiring harness and cause a short-circuit/fire.



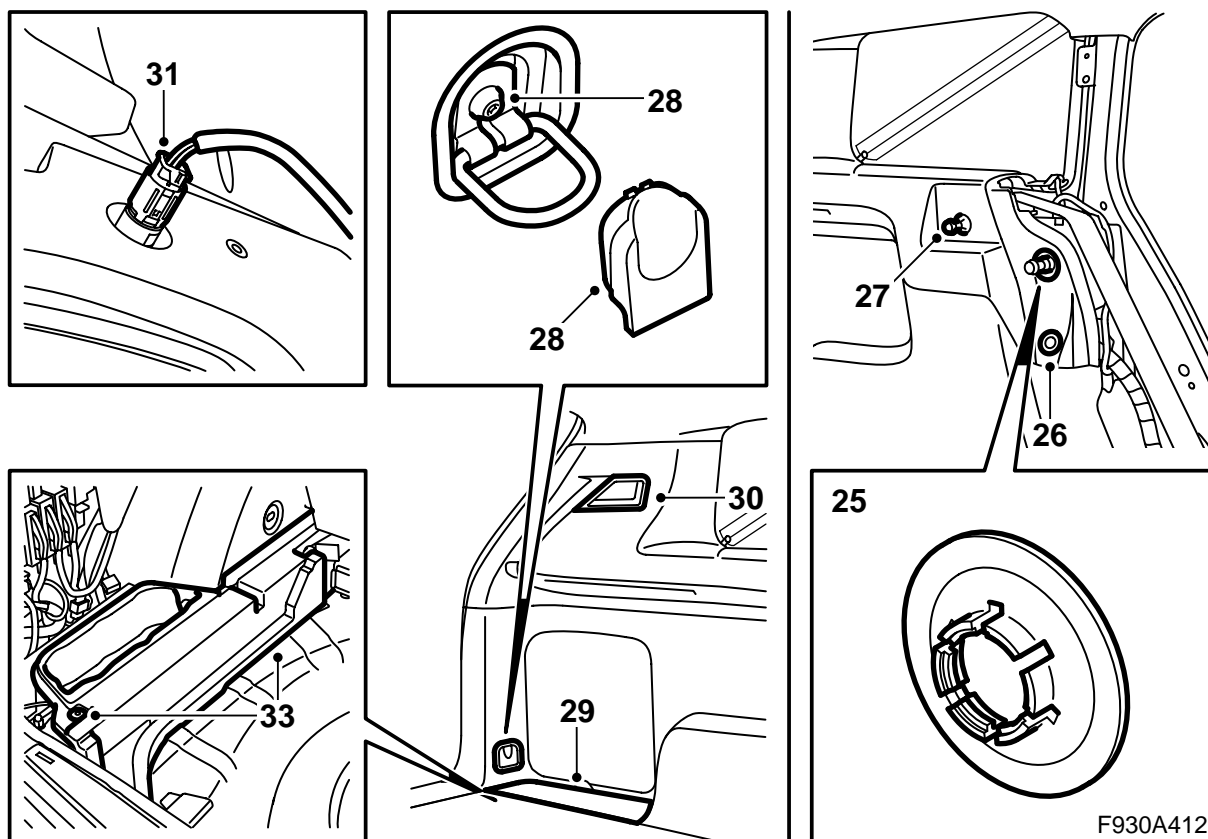
- 16 Fit the cellular block by guiding it in toward the bumper shell lugs. Press the cellular block in.
- 17 Fit the protective shell by pressing in the clips. Make sure that the sensors are located correctly.
- 18 Check that all the clips are secured in the bumper shell.



- 19 Fold down the rear seat backrests.
- 20 Remove the left and right-hand C-pillar trim. Use 82 93 474 Removal tool to remove the cover plate.
- 21 Remove the left and right-hand side bolsters. Use 82 93 474 Removal tool to remove the clips.



- 22 Remove the luggage compartment floor.
- 23 **Cars with subwoofer:** Lift up the subwoofer.
- 24 Remove the scuff plate's clips using 84 71 179 Removal tool, clips and lift up the scuff plate.



25 Steps 25-33 must be carried out on both the left and right-hand sides.

Remove the clip from the mounting in the body.
Use a screwdriver.

26 Remove the two-stage rivet using 84 71 179
Removal tool, clips.

27 Remove the mounting for the cargo guard
(if fitted).

28 Remove the cover and the screw.

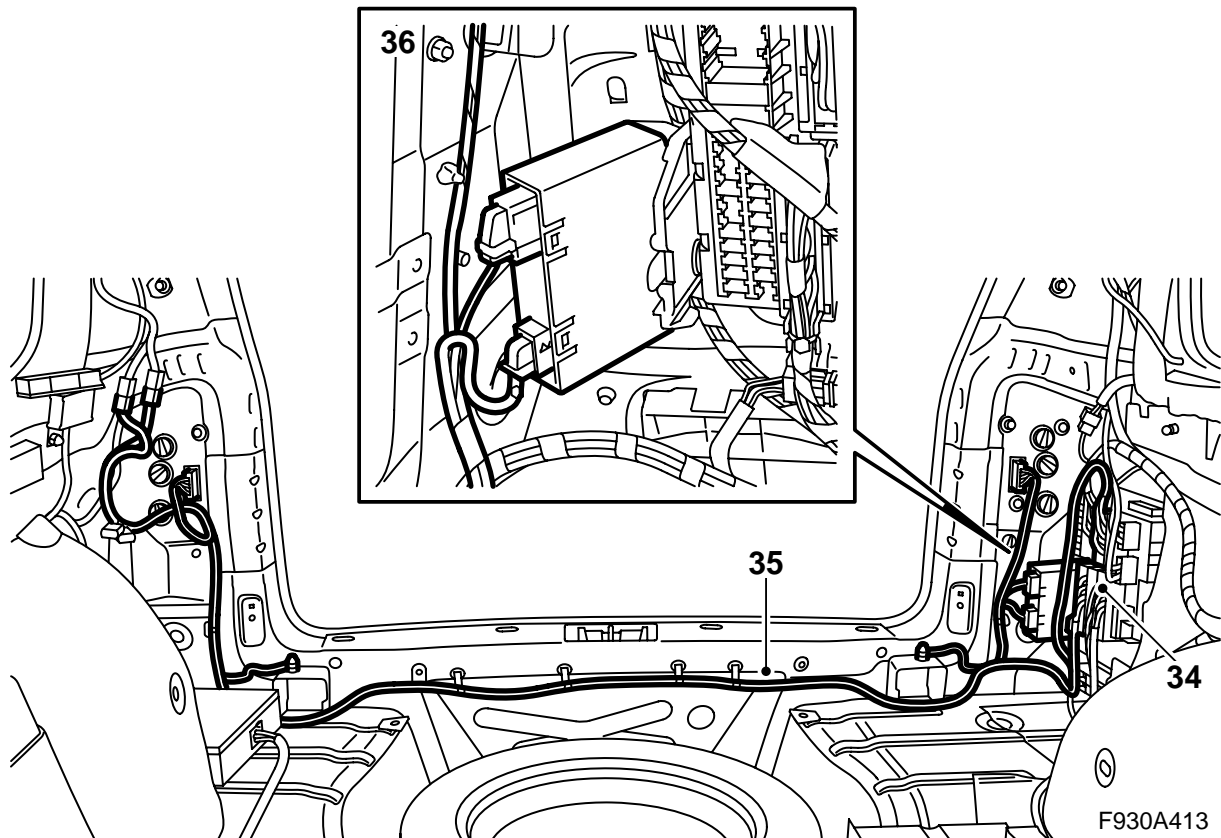
29 Lift the cover away from over the storage
compartment.

30 Remove the luggage compartment lighting lens
and insert the bulb holder through the hole in the
side trim.

31 **Right-hand side:** Also unplug the connector to
the 12 V socket.

32 Remove the trim so that the clips release.

33 Remove the clip for the foam block and remove
the foam block.



- 34 Remove the connector for the rear harness (blue and grey) from the electrical centre.
- 35 Remove the car's rear harness and fit the wiring harness from the kit instead. Plug the connectors to the electrical centre last of all.

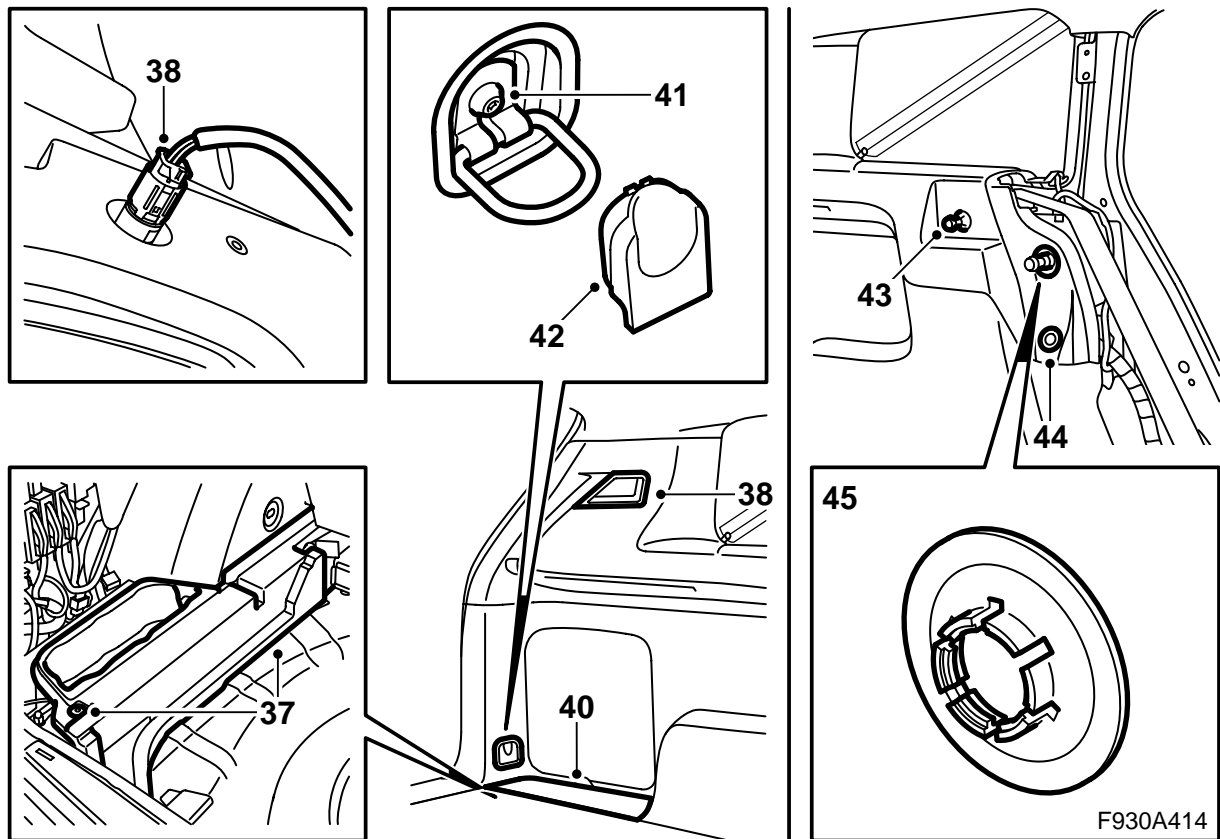
⚠ WARNING

The wiring harness must be routed and secured so that it cannot become trapped or chafe against anything when refitting dismantled parts. Incorrect routing could cause damage to the wiring harness and short circuit/fire.

Note

The wiring harness from the kit is produced for cars with max. equipment which is why not all connectors can be plugged in for all cars. Tape up unused connectors so that they cannot fall and rattle.

- 36 Fit the kit's control module on the bracket by the electrical centre and plug in the connectors.



37 Steps 37-45 must be carried out on both the left and right-hand sides.

Fit the foam block and its clips.

38 Fit the luggage compartment lighting.

Right-hand side: Also plug in the connector to the 12 V socket.

39 Press the side trim into its clips.

40 Fit the cover over the storage compartment.

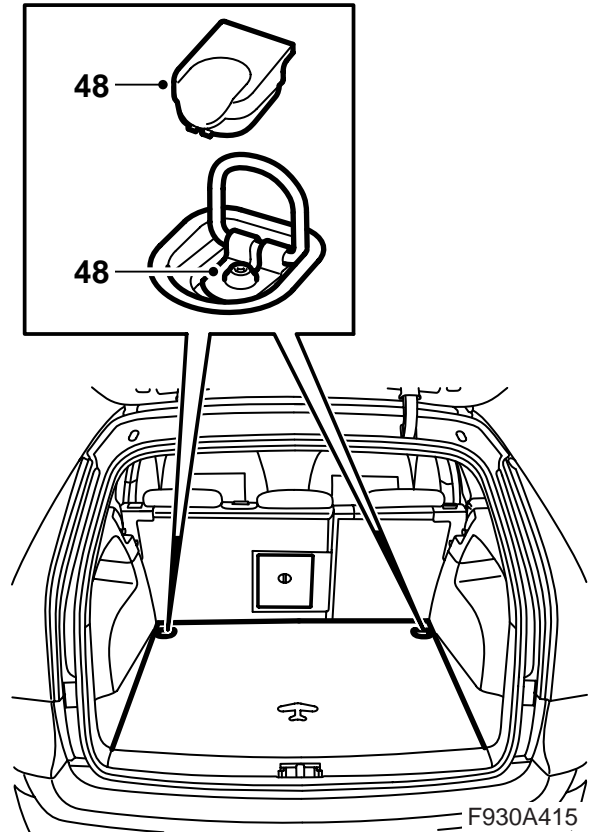
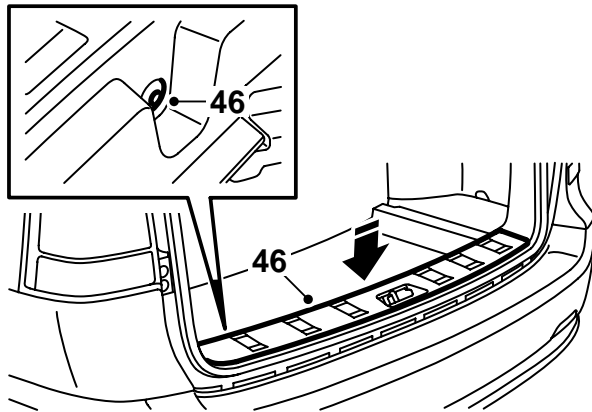
41 Fit the screw.

42 Fit the cover.

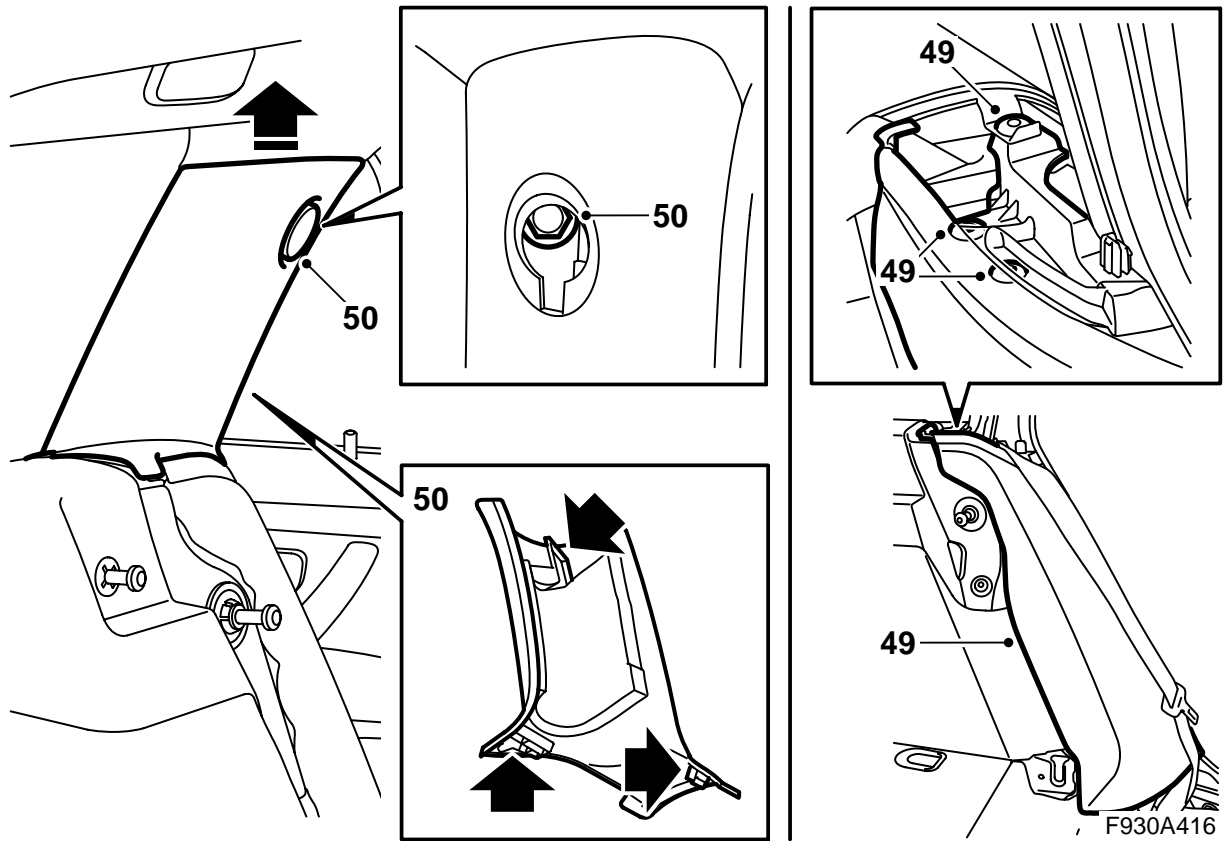
43 Fit the mounting for the cargo guard (if fitted).

44 Fit the two-stage rivet.

45 Fit the clip to the mounting in the body.



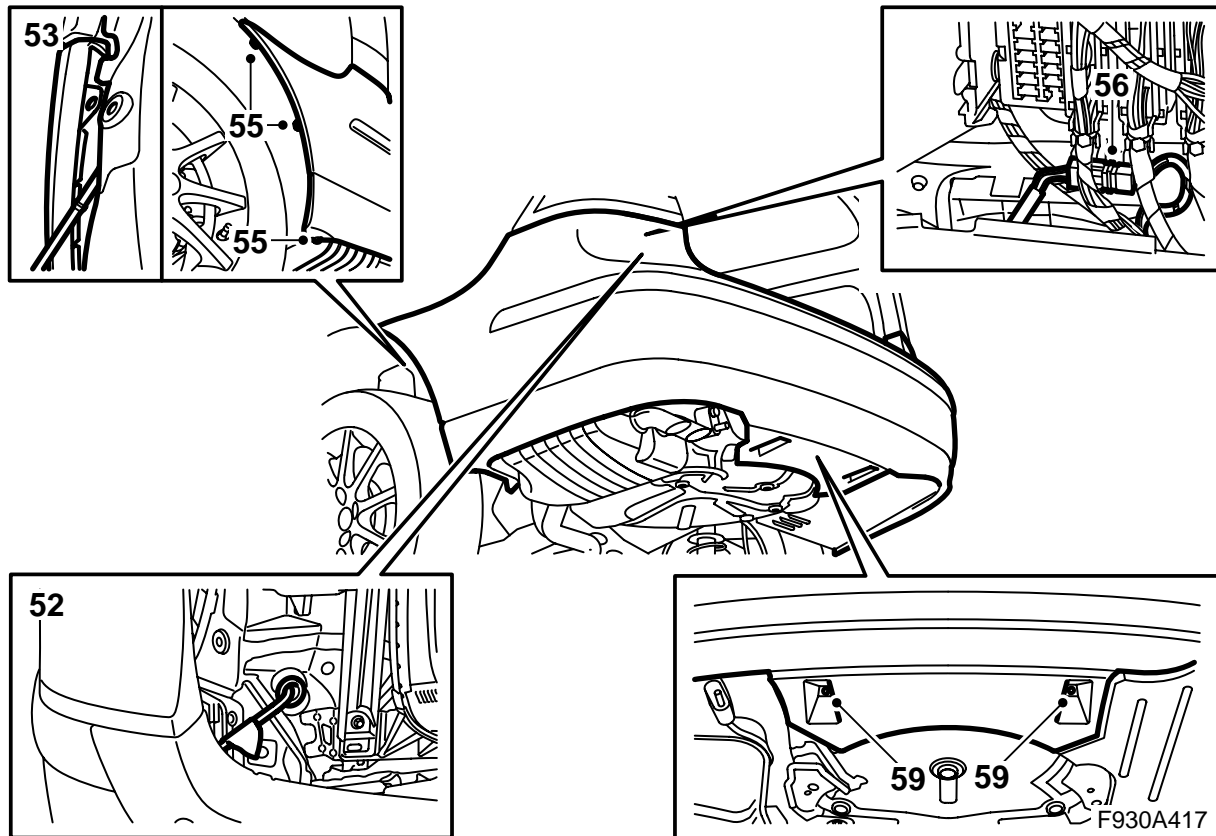
- 46 Fit the scuff plate.
- 47 **Cars with subwoofer:** Lower the subwoofer and screw it in.
- 48 Fit the luggage compartment floor.



49 Fit the left and right-hand side bolsters. Check that the belt is not twisted.

50 Fit the left and right-hand C-pillar trim.

51 Fold up the backrests.



- 52 Lift the bumper shell and thread in the wiring harness. Fit the rubber grommet.
- 53 Guide the bumper shell's tabs in under the holders.

⚠ WARNING

The wiring harness must be routed and secured so that it cannot become trapped or chafe against anything when refitting dismantled parts. Incorrect routing could cause damage to the wiring harness and short circuit/fire.

- 54 Position the bumper shell's front corner between the wing liner and holder. Make sure that the shell lug is between the wing liner and the holder for the bumper shell.
- 55 Fit the screws at the wing liners.
- 56 Plug the connector to the connector under the REC.
- 57 Check that the rubber grommet is fitted correctly.
- 58 Raise the car.
- 59 Fit the spoiler's centre nuts.
- 60 Lower the car and check the fit of the bumper shell. Adjust as necessary.
- 61 Close the tailgate.
- 62 Connect the diagnostic tool, select car and model year, select "All", select "Add/Remove", select the accessory and then "Add".
- 63 Turn the ignition key to the "ON" position and check all functions affected by the change of wiring harness (light clusters, luggage compartment locking, rear wiper etc.).
- 64 With the ignition key in the ON position and reverse gear engaged, check that the system warns against objects in the rear by using tones. The first tone is given when an object is at a distance of 1.8 metres. The signal then has a frequency of 2 tones per second, but the number of tones per second increases the closer the object becomes to the vehicle and changes as follows:
- 1.8 - 1.3 m: 2 tones/second
 - 1.3 - 0.9 m: 3 tones/second
 - 0.9 - 0.3 m: from 5 to 12 tones/second in close stages
 - 0.3 m: continuous tone