

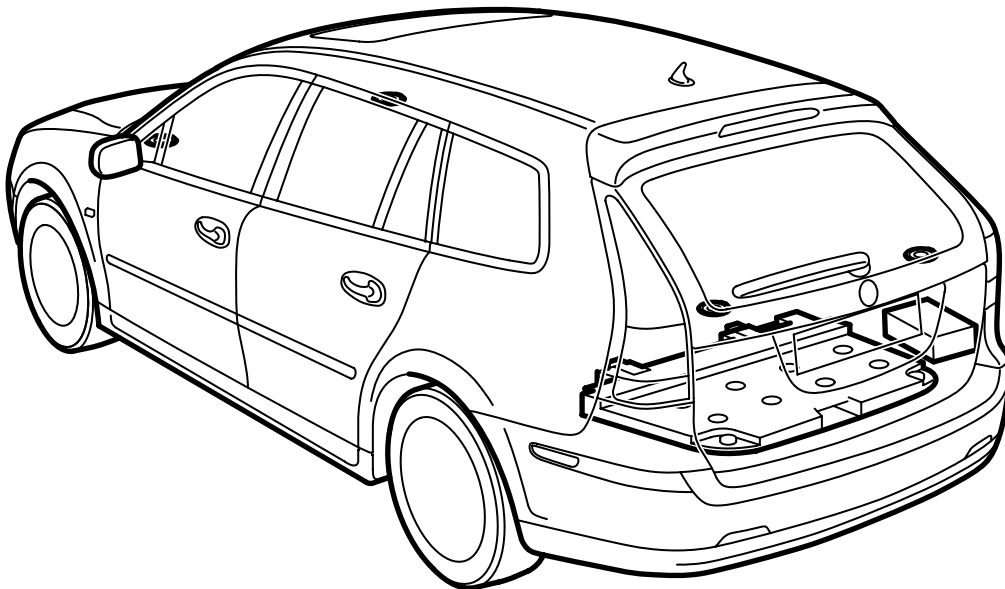


**MONTERINGSANVISNING · INSTALLATION INSTRUCTIONS
MONTAGEANLEITUNG · INSTRUCTIONS DE MONTAGE**

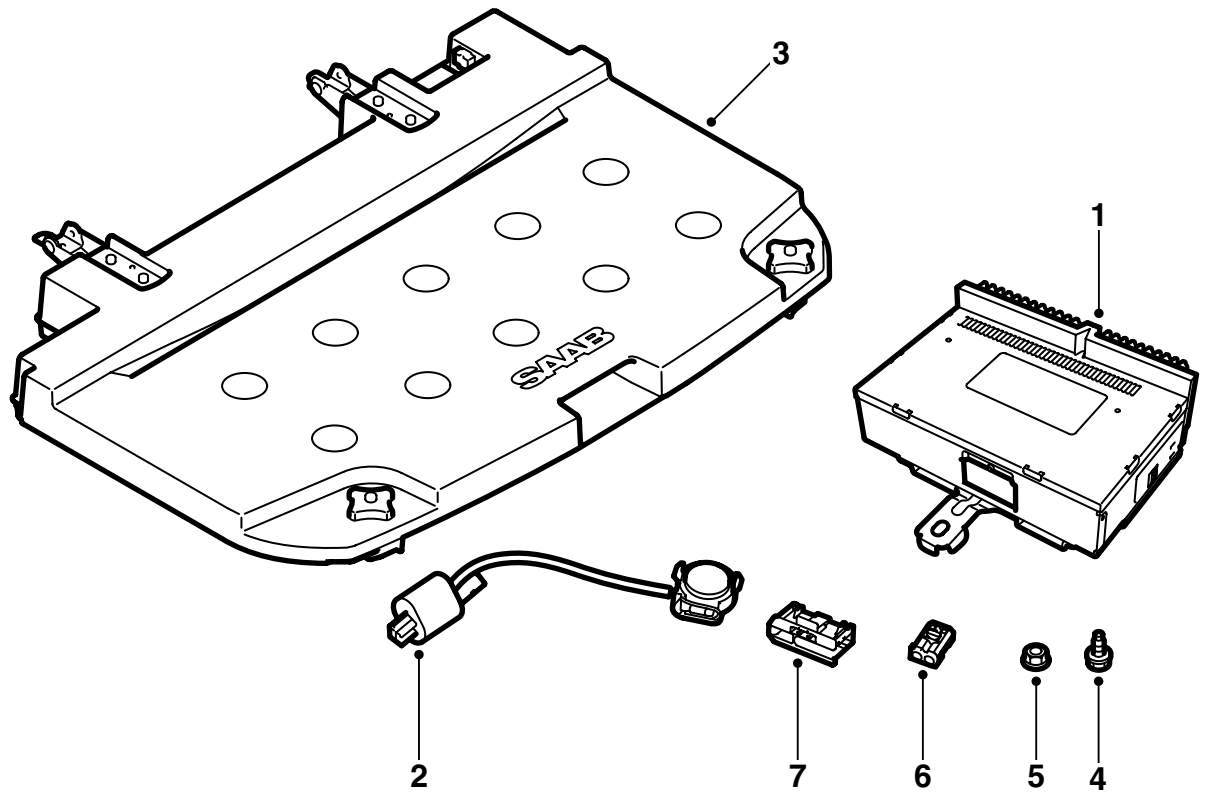
Saab 9-3 5D M06-

Upgrade to Premium 300 sound system

| Accessories Part No. | Group | Date | Instruction Part No. | Replaces |
|----------------------|---------|--------|----------------------|----------|
| 32 025 674 | 9:36-29 | Sep 05 | 32 025 675 | |



F930A418



F930A419

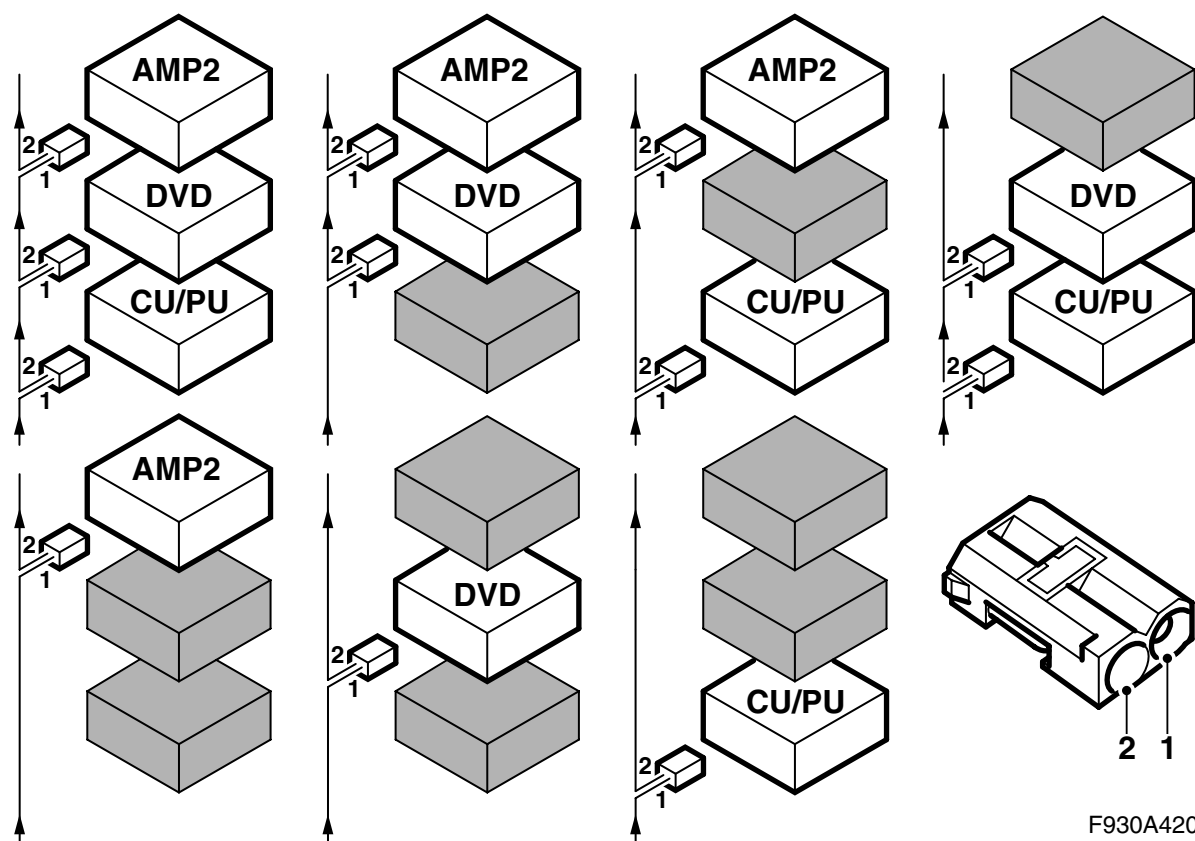
Basic kit

- 1 Amplifier AMP2
- 2 Treble speaker (x4)
- 3 Bass speaker, subwoofer
- 4 Screw (x1)
- 5 Nut (x2)
- 6 Fibre optic connector
- 7 Connector

Depending on the equipment level of the car the kit may need to be supplemented with:

- fibre optic cable
- cable tie

which must be ordered in addition.



F930A420

Bus Communication

Many parts of the car's electrical system communicate using a bus. There are three types of bus communication: P-bus (Powertrain Bus), I-bus (Instrument Bus) and O-bus (Optical bus). The audio system communicates via the O-bus together with the navigation system, the telephone system and others.

The O-bus is optical and is a ring bus. Two fibre optical cables are connected to each control module on the bus, one fibre optical cable for receiving and one for sending. Messages received are converted by each control module from a fibre optic signal to electrical and then converted back to optical for sending. The O-bus data transfer rate is 25 Mbit/s.

Important

It is very important that everything connected to the O-bus is connected in a specific order, see illustration, and that the ring is closed the whole time.

Connection in any other way than that described in these fitting instructions may result in several of the car's systems failing to work.

AMP2 is an amplifier by the right-hand rear wheel housing

CU/PU is a telematics unit by the rear seat

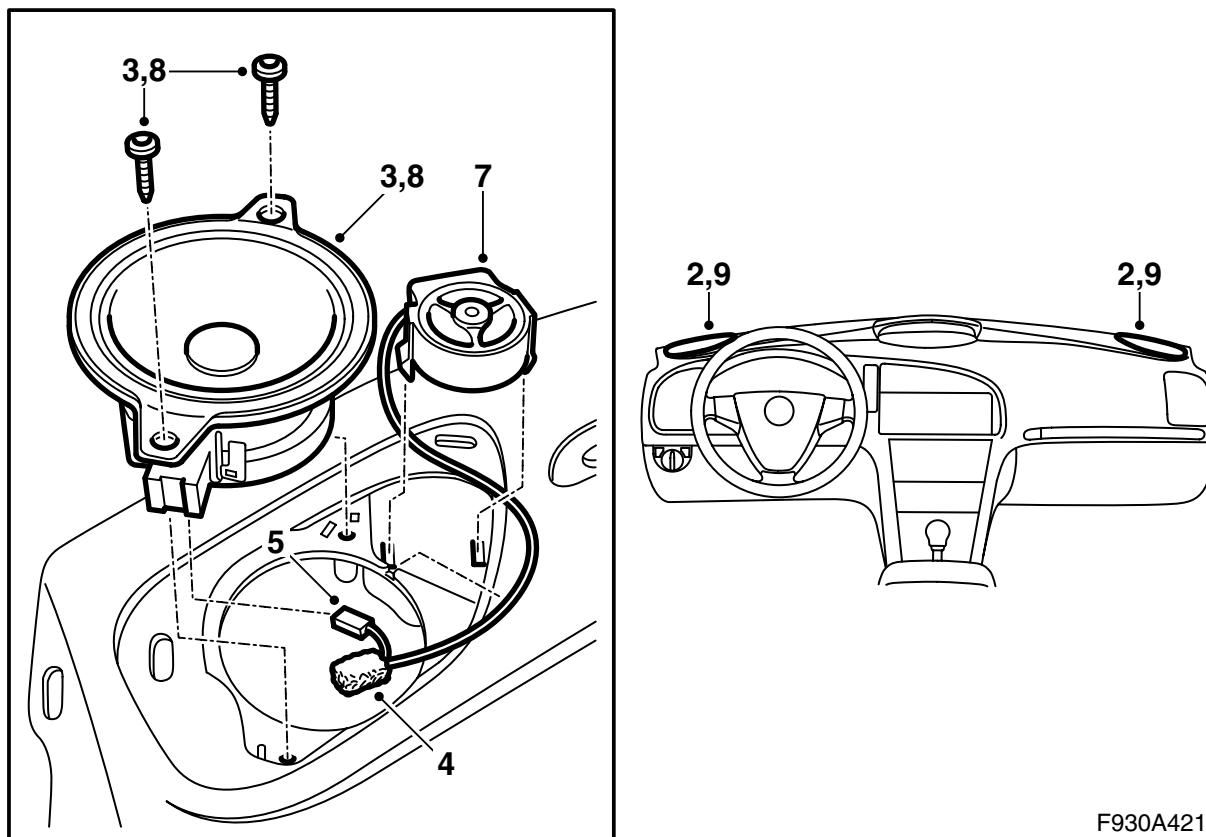
DVD is a DVD player by the rear seat

When fitting new equipment to be connected to the O-bus it is important that it is connected into the correct side of the existing equipment.

Important

Handle the fibre optic cables with care or the signal may be distorted.

- It is very important that the two leads in the connector are not confused with one another.
- Do not splice the cables.
- Do not bend the cable in a radius smaller than 25 mm.
- Do not expose the cable to temperatures exceeding 85 °C.
- Keep the cable ends free from dirt and grime.
- Do not expose the cable to impact as this may cause the transparent plastic to whiten, thereby reducing the intensity of the light and causing possible communication interruptions.
- The cable should not lie against any sharp edges as this may cause increased signal reduction.

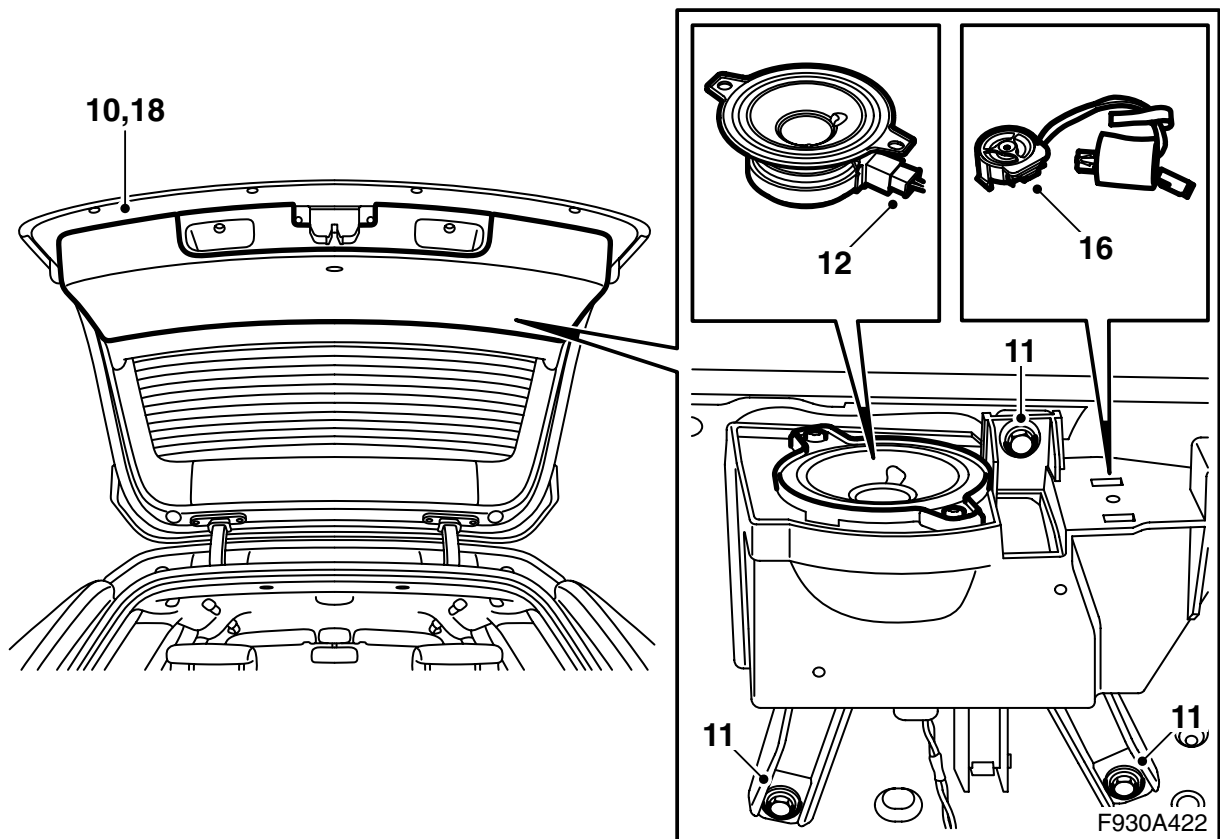


F930A421

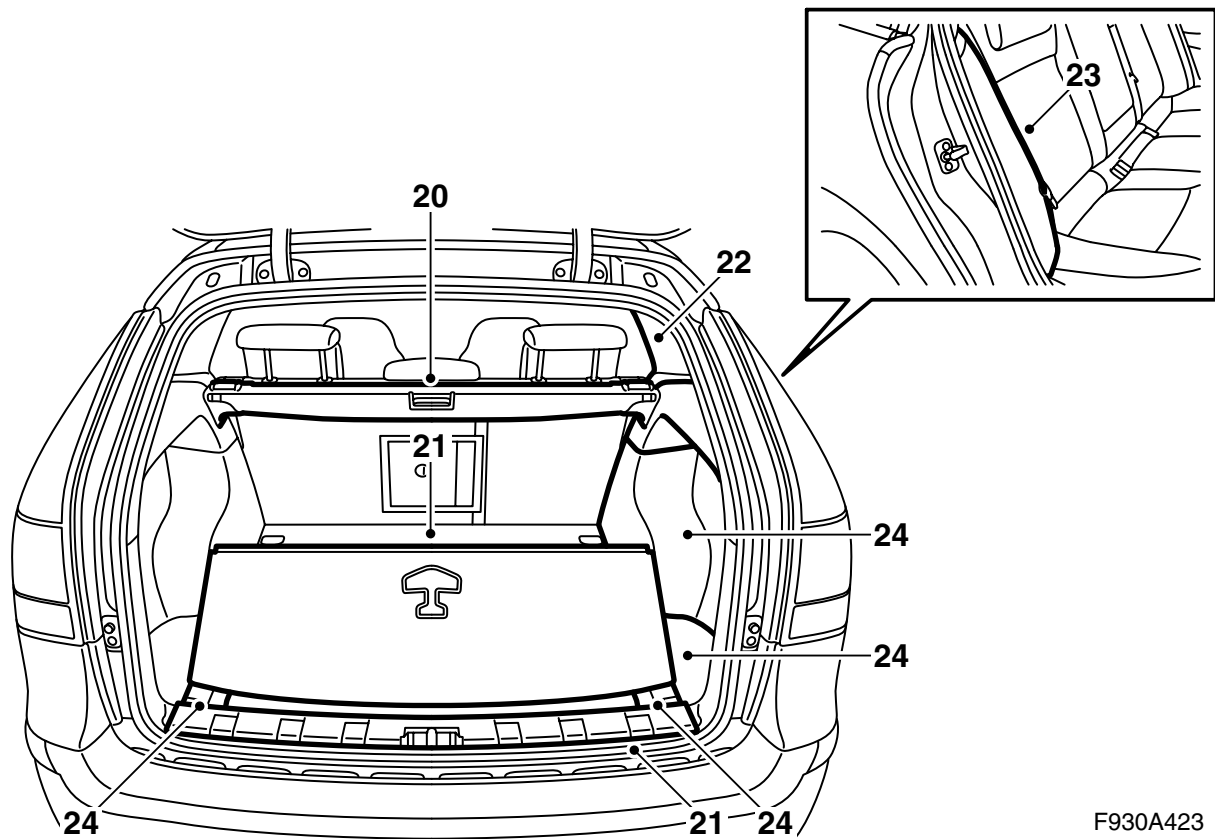
Note

For more detailed information on the different steps in the removal/fitting methods, please refer to the corresponding section in WIS.

- 1 Take the ignition key from the ignition switch.
- 2 Remove the speaker grille in the dashboard using 82 93 474 Removal tool.
- 3 Remove the wide range speakers' screws. Lift the speakers up and unplug the connector.
- 4 Plug the car's connector into the treble speakers and slide the foam plastic sleeve over the connector.
- 5 Plug the connector from the treble speakers into the wide range speakers.
- 6 Guide down the wiring harness in the wide range speakers' grooves and position the wiring harness for the treble speakers in the respective groove.
- 7 Fit the treble speakers by snapping them into the holes.
- 8 Fit the wide range speakers.
- 9 Fit the speaker grilles.

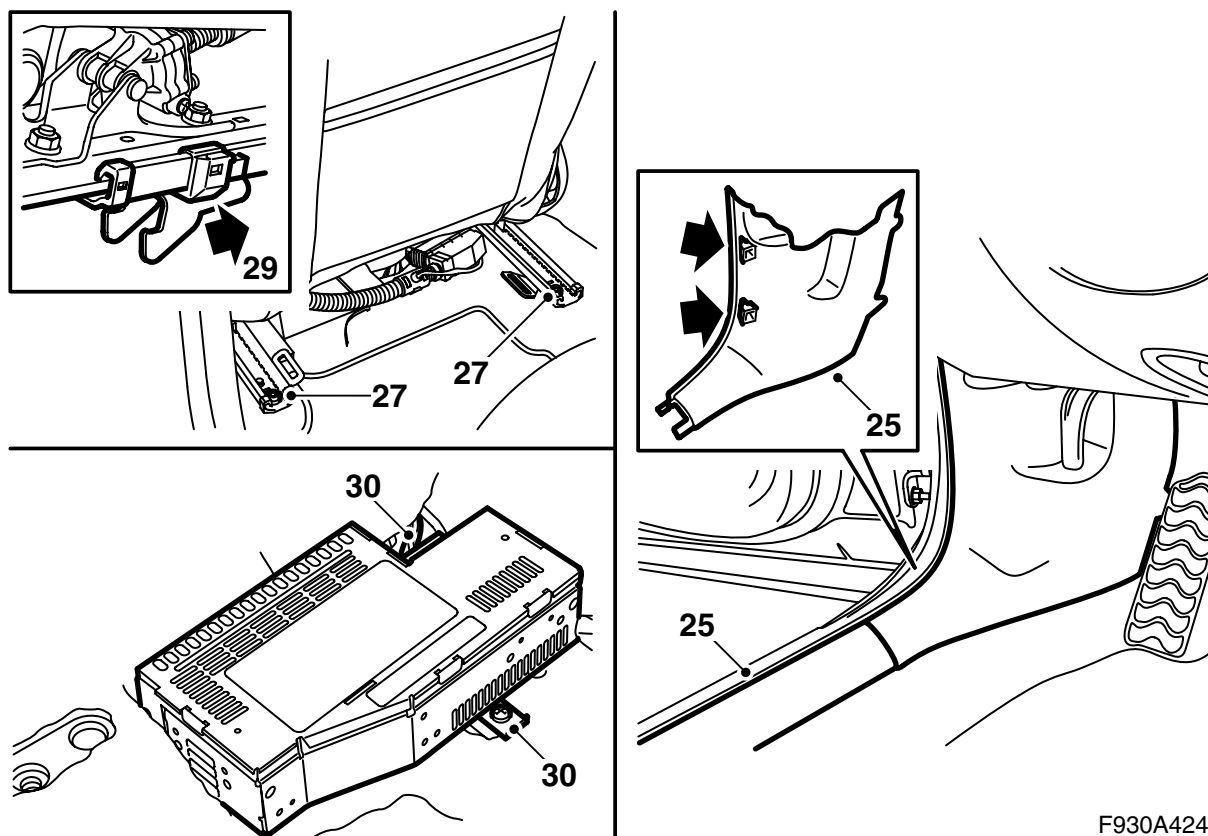


- 10 Remove the tailgate trim.
- 11 Remove the speaker boxes.
- 12 Unplug the connector.
- 13 Plug the car's connector into the treble speakers and slide the foam plastic sleeve over the connector.
- 14 Plug the connector from the treble speakers into the wide range speakers.
- 15 Guide down the wiring harness in the wide range speakers' grooves and position the wiring harness for the treble speakers in the respective groove.
- 16 Fit the treble speakers by snapping them into the holes.
- 17 Fit the speaker boxes.
- 18 Fit the trim and window cover plates.
- 19 Fit the speaker grilles.



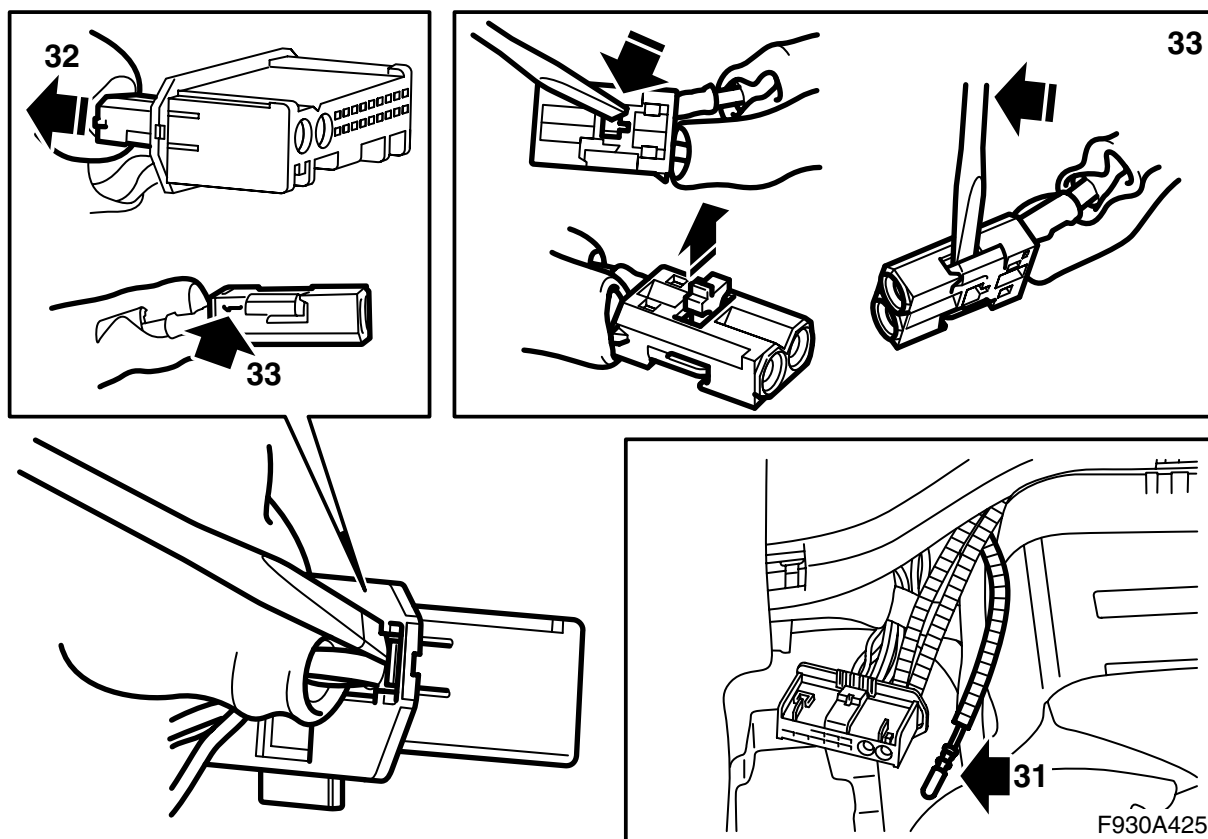
F930A423

- 20 Fold the rear seat backrests and remove the cargo guard if fitted.
- 21 Remove the scuff plate and luggage compartment floor.
- 22 Remove the right-hand C-pillar trim.
- 23 Remove the right-hand side bolster.
- 24 Remove the luggage compartment's right-hand side trim, the cover over the storage compartment and the foam block.

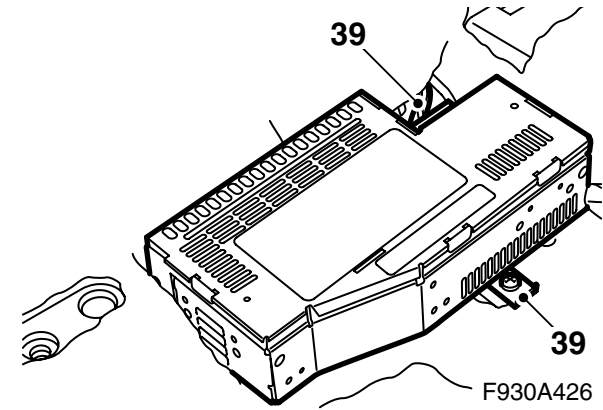
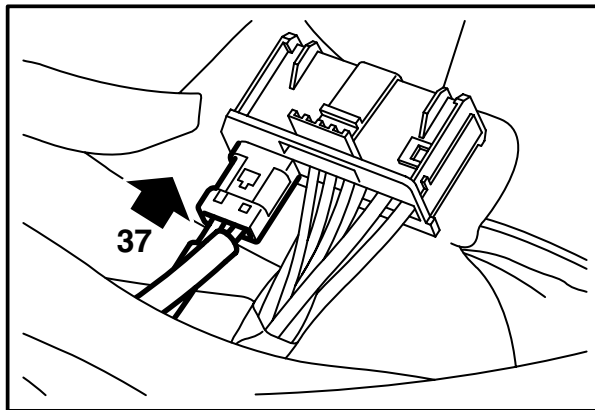
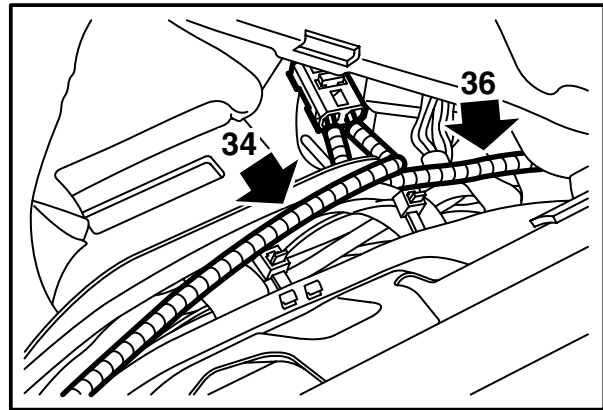
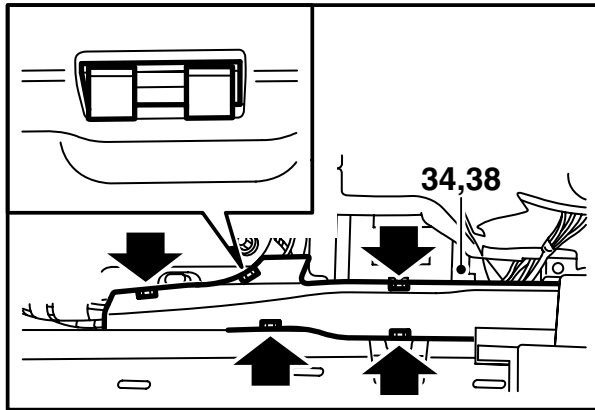


F930A424

- 25 Remove the front scuff plate and the lower section of the A-pillar trim on the left-hand side of the car.
- 26 Position the left-hand front seat in its most forward position and fold the backrest forwards.
- 27 Remove the two rear retaining screws from the seat.
- 28 Angle the seat forwards.
- 29 Pull the seat back so that the fitting hooks loosen from their positions. Fold the whole seat backwards.
- 30 Remove the amplifier.



- 31 Locate the green marked fibre optic cable by the amplifier.
- 32 Unplug the fibre optic cables' connector (the small connector) from the amplifier's connector.
- 33 Remove the fibre optic cable connected to position 1 by opening the connector locking clip and carefully lifting the hook.
- 34 Remove the protective cover from the connection on the green marked fibre optic cable.
- 35 Fit the protective cover onto the removed fibre optic cable connection and carefully move the fibre optic cable aside in order to prevent damage.



36 Remove the cover from the cable duct, check that the green marked fibre optic cable cannot bend and fit it in position 1 in the amplifier's fibre optic connector. Fit the locking clip.

Important

Handle the fibre optic cables with care or the signal may be distorted.

- Do not bend the cable in a radius smaller than 25 mm.
- Do not expose the cable to impact as this may cause the transparent plastic to whiten, thereby reducing the intensity of the light and causing possible communication interruptions.
- The cable should not lie against any sharp edges as this may cause increased signal reduction.

37 Plug the fibre optic connector into the large connector.

38 Fit the cover to the cable duct, draw back the carpet and guide out the connector and the cables through the hole in the carpet.

39 Connect and fit the amplifier.

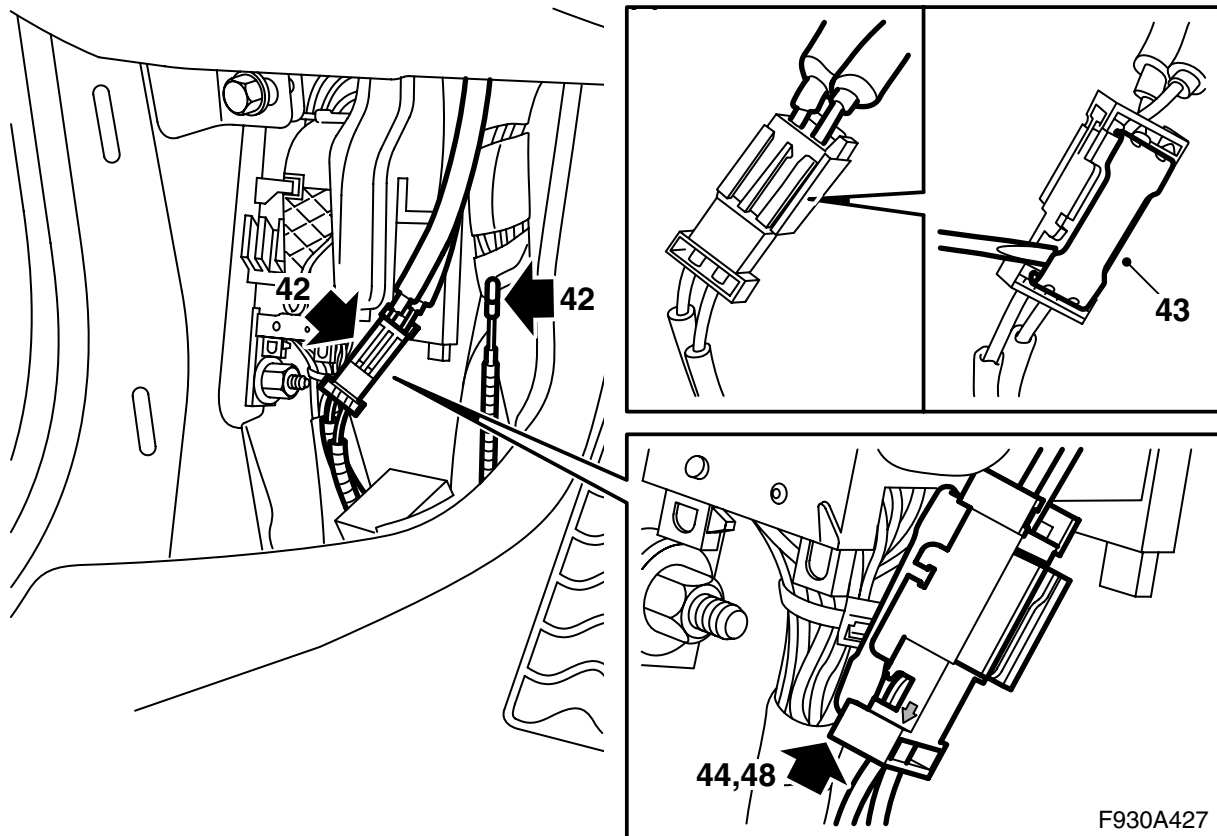
40 **Cars with only AMP1:** Proceed to step 42

41 **Cars with telematics unit:**

- Fit the A-pillar trim.
- Fit the scuff plate.
- Set the seat in its correct position, be careful that the fitting hooks locate themselves correctly into their brackets, and fit the rear retaining screws.

Tightening torque 30 Nm (22 lbf ft)

- Proceed to step 52.



42 Steps 42-51 only apply to cars with just AMP1.

Locate the loose fibre optic cable and the connector with the fibre optic cables connected by the left-hand A-pillar (taped to the cable duct).

43 Lift up the connector lock tab.

44 Remove the fibre optic cable from the position in the lower connector where the arrow points outwards, to the fibre optic cable.

Important

Handle the fibre optic cables with care or the signal may be distorted.

- It is very important that the two leads in the connector are not confused with one another.
- Do not bend the cable in a radius smaller than 25 mm.
- Keep the cable ends free from dirt and grime.
- The cable should not lie against any sharp edges as this may cause increased signal reduction.

45 Remove the fixing tape from the loose fibre optic cable.

46 Remove the protective cover from the connection.

47 Fit the protective cover onto the removed fibre optic cable connection and carefully move the fibre optic cable aside in order to prevent damage, and position it behind the wiring harness.

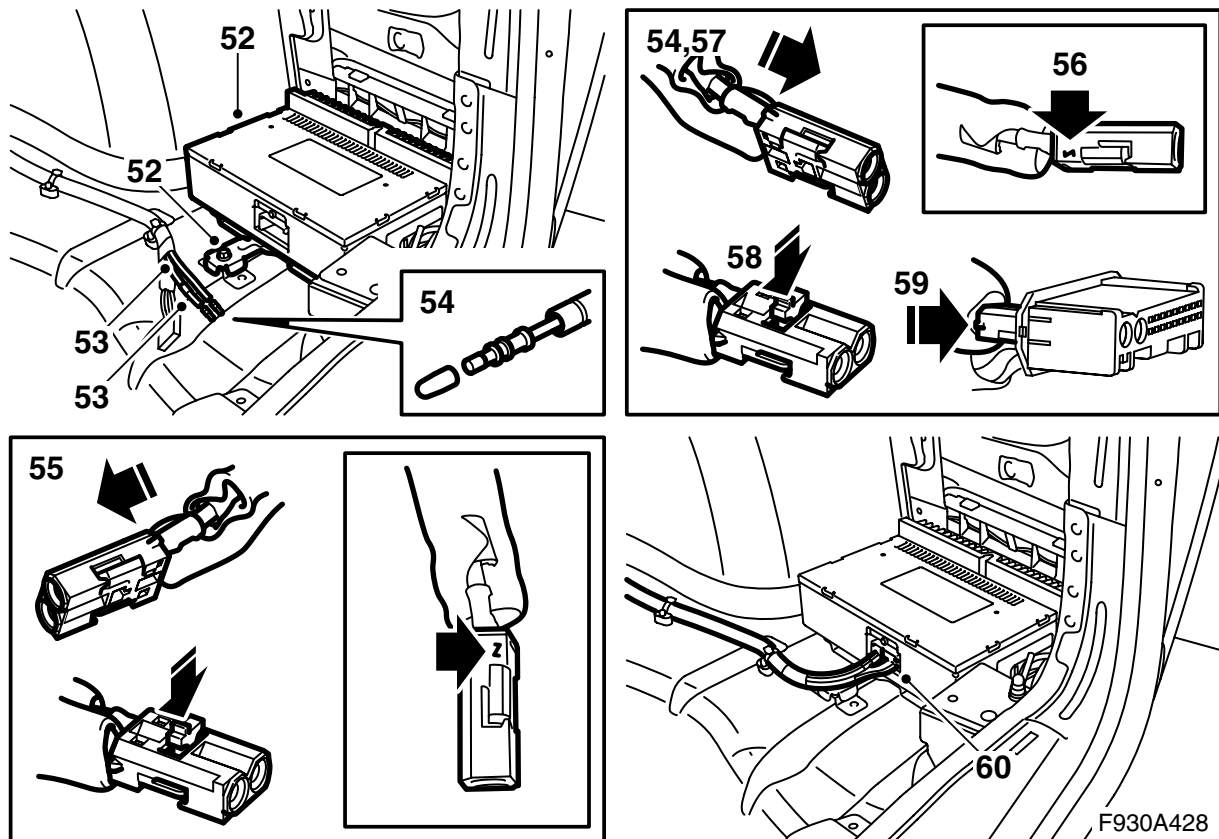
48 Fit the loose fibre optic cable in the connector and fit the lock tab.

49 Fit the A-pillar trim.

50 Fit the scuff plate.

51 Set the seat in its correct position, be careful that the fitting hooks locate themselves correctly into their brackets, and fit the rear retaining screws.

Tightening torque 30 Nm (22 lbf ft)



- 52 Fit the kit's amplifier in its console in the space behind the right-hand wheel housing.
- 53 Locate the loose fibre optic cable with blue tape marking by the rear amplifier (some car variants have two loose fibre optic cables).
- 54 Remove the protective cover from the fibre optic cable connection.
- 55 Fit the fibre optic cable in position 2 in a fibre optic connector from the kit.
- 56 **Cars with only AMP1:** Remove the protective cover on the green marked fibre optic cable and connect it to position 1 in the same fibre optic connector.
Proceed to step 58.
- 57 **Cars with telematics with/without DVD player:** Remove the protective cover from one connection on the extra kit's fibre optic cable and connect it to position 1 in the same fibre optic connector.
- 58 Fit the locking clip.
- 59 Fit the fibre optic connector together with the wiring harness connector in the kit's large connector.

- 60 Plug the connector into the amplifier.

Important

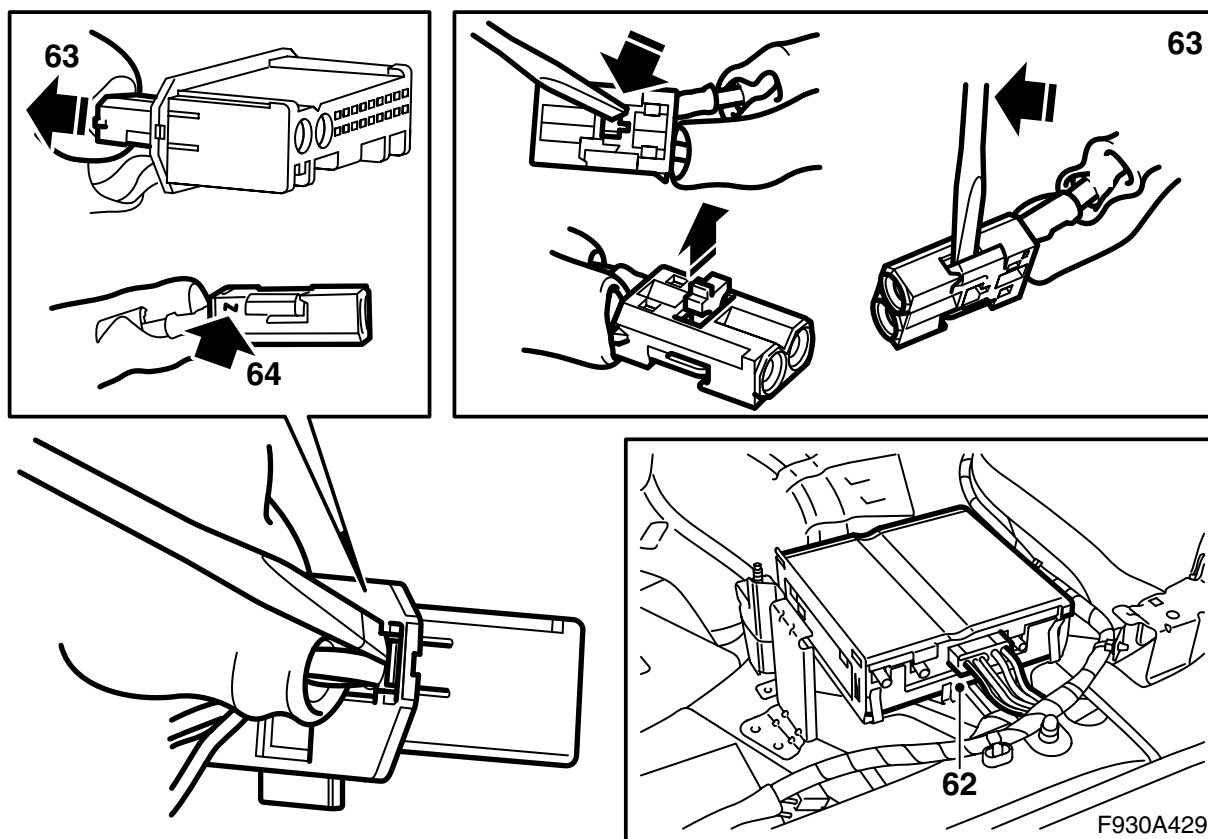
Handle the fibre optic cables with care or the signal may be distorted.

- Do not bend the cable in a radius smaller than 25 mm.
- Do not expose the cable to impact as this may cause the transparent plastic to whiten, thereby reducing the intensity of the light and causing possible communication interruptions.
- The cable should not lie against any sharp edges as this may cause increased signal reduction.

- 61 If the car is only equipped with front amplifier, i.e. without integrated telephone and navigation, continue to step 80.

If the car is equipped with integrated telephone (without DVD player), continue with step 62.

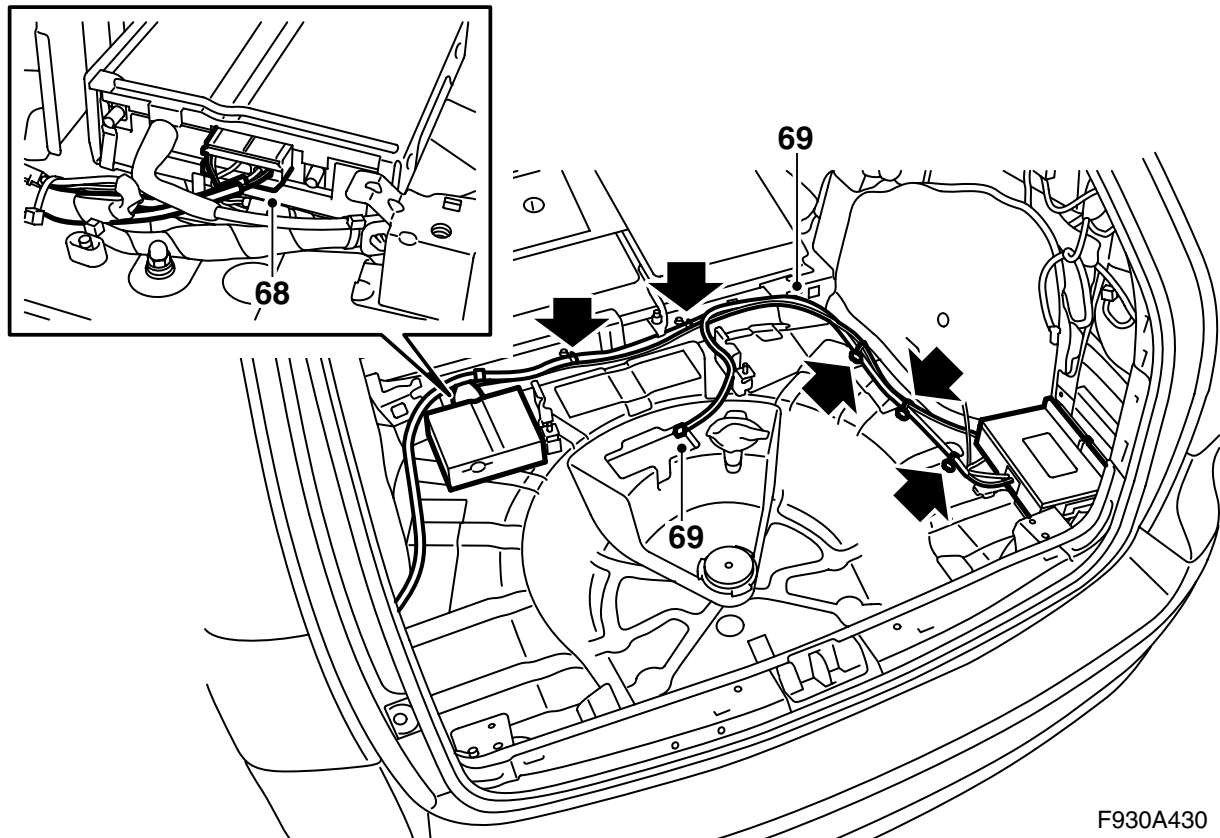
If the car is equipped with navigation system, continue with step 71.



62 Steps 62-70 apply to cars with telematics unit but without DVD player.

Unplug the connector from the telematics unit.

- 63 Unplug the fibre optic cables' connector (the small connector) from the telematics unit's connector.
- 64 Remove the fibre optic cable which is connected to position 2 by opening the connector locking clip and carefully lifting the hook.
- 65 Remove the protective cover from the connection on the extra fibre optic cable routed from AMP2.
- 66 Fit the protective cover onto the removed fibre optic cable connection and carefully move the fibre optic cable aside in order to prevent damage.
- 67 Fit the extra fibre optic cable in position 2. Fit the locking clip.



F930A430

68 Plug the connector into the telematics unit.

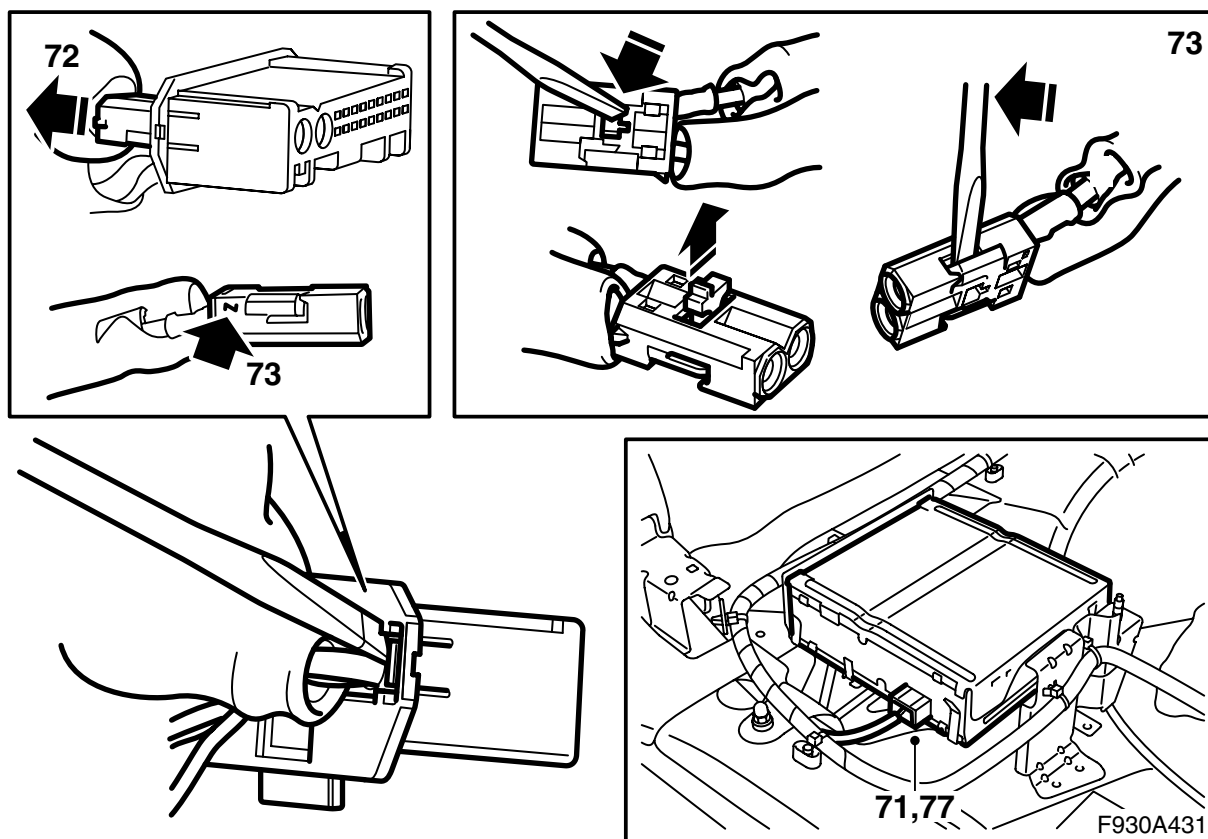
Important

Handle the fibre optic cables with care or the signal may be distorted.

- Do not bend the cable in a radius smaller than 25 mm.
- Do not expose the cable to impact as this may cause the transparent plastic to whiten, thereby reducing the intensity of the light and causing possible communication interruptions.
- The cable should not lie against any sharp edges as this may cause increased signal reduction.

69 Detach the taped speaker cable from the harness. Secure the new fibre optic cable using cable ties along the normal wiring harness. Any excess should be pulled into a hoop by the amplifier.

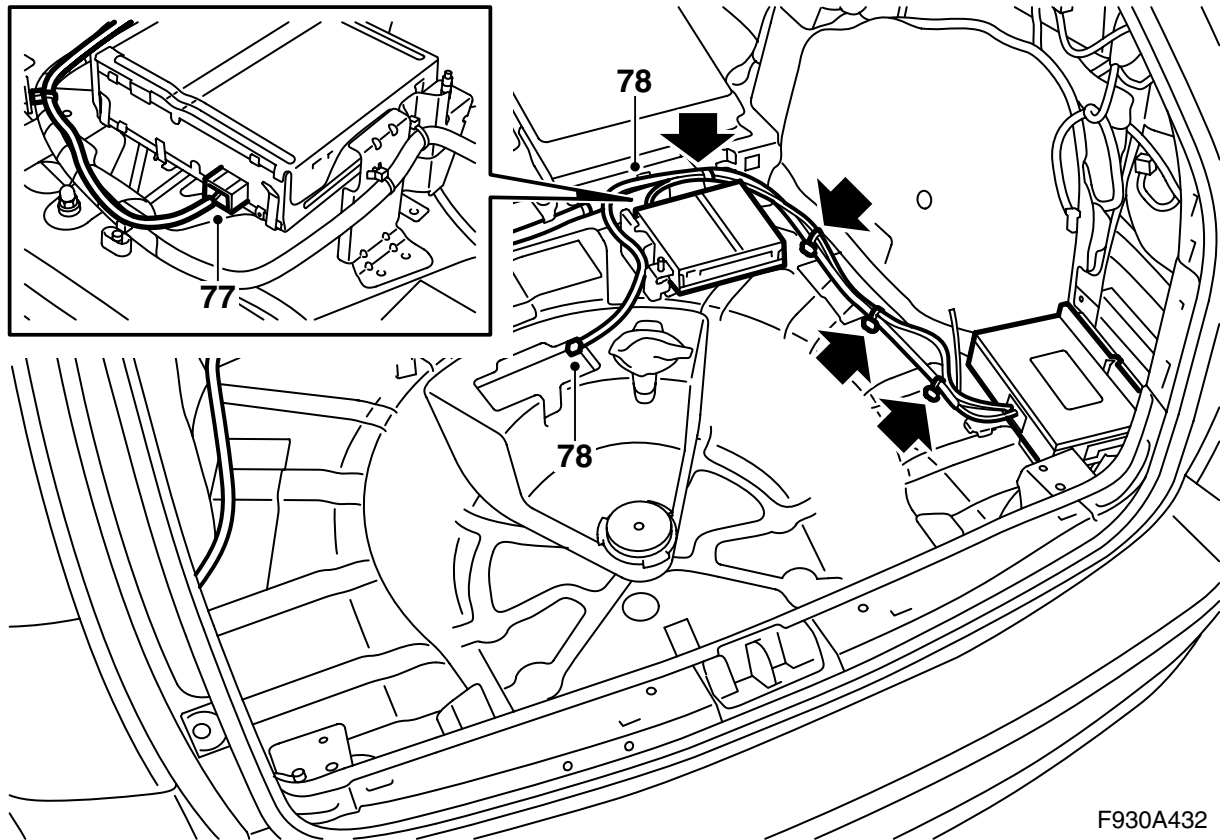
70 Continue with step 80.



71 Steps 71-79 apply to cars with navigation system.

Unplug the connector from the DVD player.

- 72 Unplug the fibre optic cables' connector (the small connector) from the connector.
- 73 Remove the fibre optic cable which is connected to position 2 by opening the connector locking clip and carefully lifting the hook.
- 74 Remove the protective cover from the connection on the extra fibre optic cable routed from AMP2.
- 75 Fit the protective cover onto the removed fibre optic cable connection and carefully move the fibre optic cable aside in order to prevent damage.
- 76 Fit the extra fibre optic cable in position 2. Fit the locking clip.



F930A432

77 Plug the connector into the DVD player.

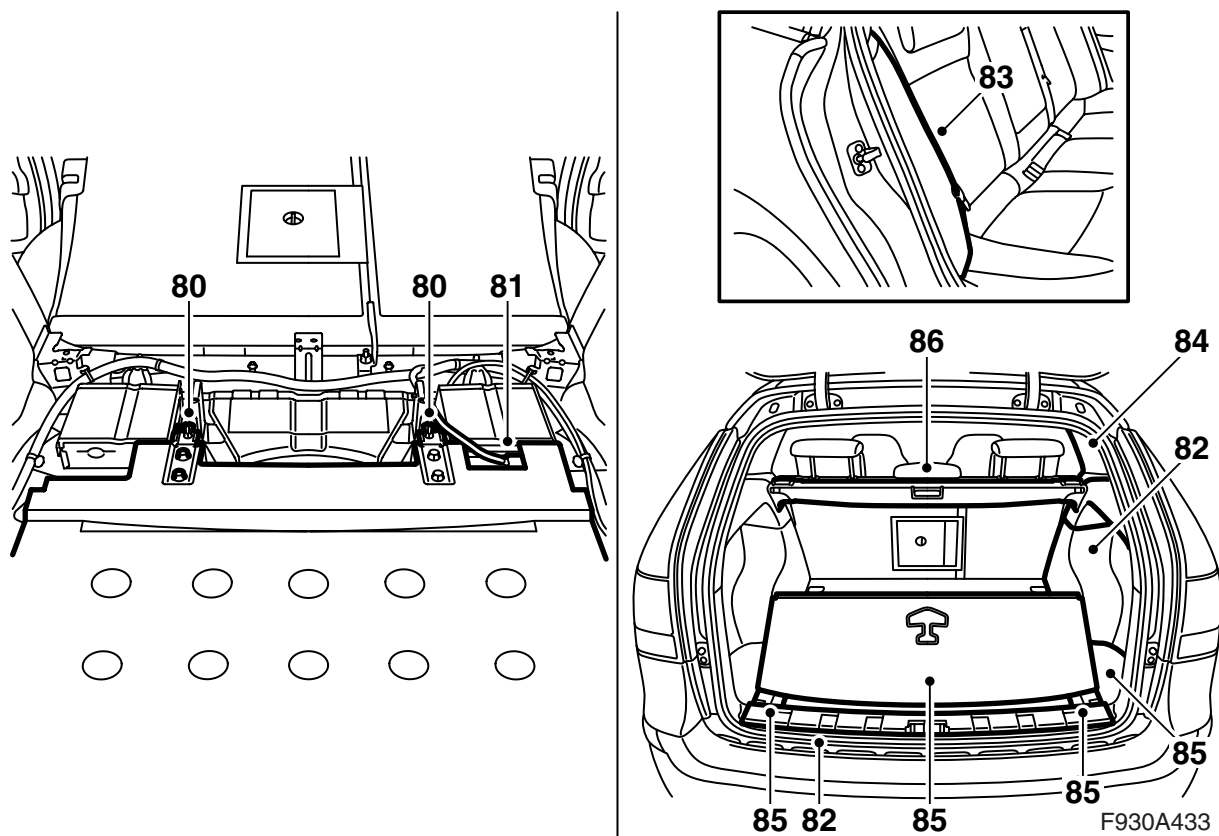
Important

Handle the fibre optic cables with care or the signal may be distorted.

- Do not bend the cable in a radius smaller than 25 mm.
- Do not expose the cable to impact as this may cause the transparent plastic to whiten, thereby reducing the intensity of the light and causing possible communication interruptions.
- The cable should not lie against any sharp edges as this may cause increased signal reduction.

78 Detach the taped speaker cable from the harness. Secure the new fibre optic cable using cable ties along the normal wiring harness. Any excess should be pulled into a hoop by the amplifier.

79 Continue with step 80.



- 80 Fit the bass speaker with the set's two nuts.
- 81 Plug the connector into the bass speaker. Secure the cable in its mounting hole.
- 82 Fit the foam block (without storage compartment on right-hand side) and the side trim.
- 83 Fit the right-hand side bolster.
- 84 Fit the right-hand C-pillar trim.
- 85 Fit the luggage compartment floor, scuff plate and cover for the storage compartment.
- 86 Fit the cargo guard if fitted.
- 87 Fold up the backrests. Check that the backrests are locked. Move the seat to normal position and reset the backrest position.
- 88 Connect the diagnostic tool, select car and model year, select "All", select "Add/Remove", select the accessory and then "Add".

Note

The diagnostic tool will on some occasions need to retrieve a security code in TIS. Information on what to do will be displayed on the diagnostic tool display.

- 89 Check that the system is working.