

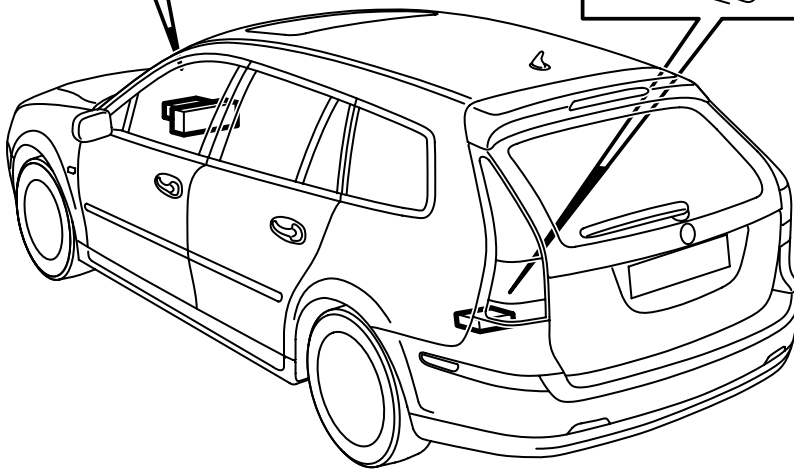
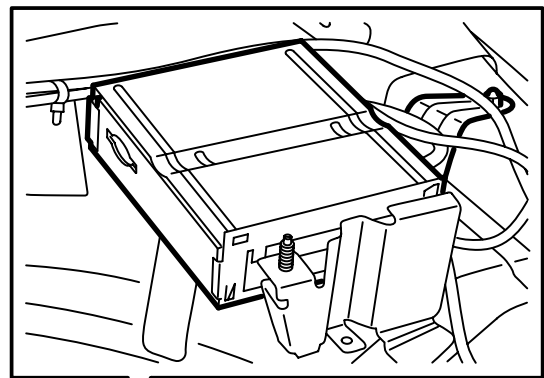
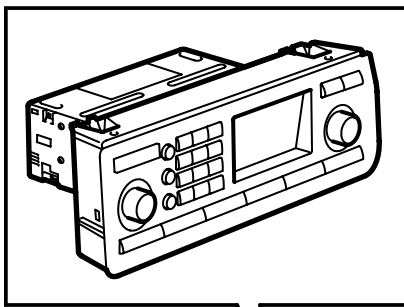


**MONTERINGSANVISNING · INSTALLATION INSTRUCTIONS
MONTAGEANLEITUNG · INSTRUCTIONS DE MONTAGE**

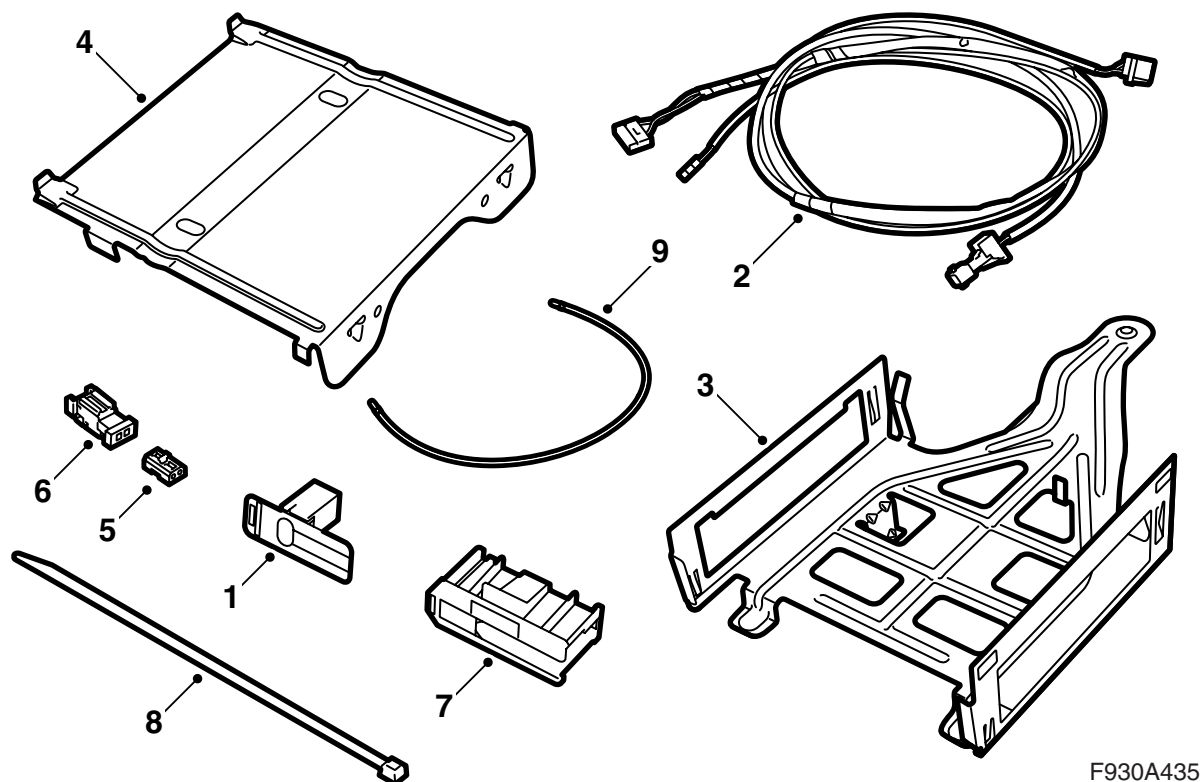
Saab 9-3 5D M05-

Integrated telephone

Accessories Part No.	Group	Date	Instruction Part No.	Replaces
32 025 679	9:39-14	Sep 05	32 025 678	



F930A434



F930A435

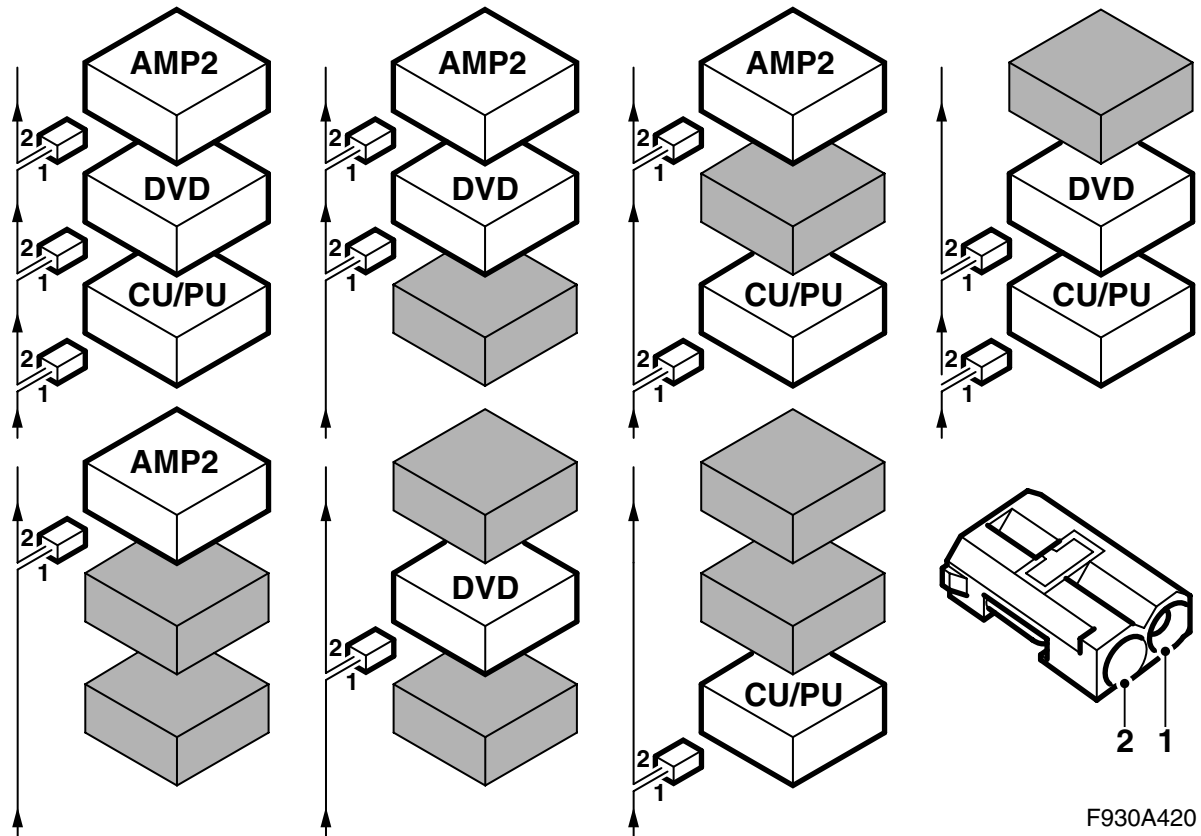
Basic kit

- 1 Antenna, Bluetooth
- 2 Wiring harness
- 3 Console, lower section
- 4 Console, upper section
- 5 Fibre optic connector (x2)
- 6 Fibre optic connector
- 7 Connector casing
- 8 Cable tie (x15)
- 9 Fibre optic cable (x2)

Depending on the equipment level of the car the kit may need to be supplemented with:

- Telematics unit (CU)
- Control panel, infotainment unit (ICM2)
- Antenna cable GSM
- Fibre optic cable
- Antenna, Bluetooth

which are ordered separately.



F930A420

Bus Communication

Many parts of the car's electrical system communicate using a bus. There are three types of bus communication: P-bus (Powertrain Bus), I-bus (Instrument Bus) and O-bus (Optical bus). The audio system communicates via the O-bus together with the navigation system, the telephone system and others.

The O-bus is optical and is a ring bus. Two fibre optical cables are connected to each control module on the bus, one fibre optical cable for receiving and one for sending. Messages received are converted by each control module from a fibre optical signal to electrical and then converted back to optical for sending. The O-bus data transfer rate is 25 Mbit/s.

Important

It is very important that everything connected to the O-bus is connected in a specific order, see illustration, and that the ring is closed the whole time.

Connection in any other way than that described in these fitting instructions may result in several of the car's systems failing to work.

AMP2 is an amplifier by the right-hand rear wheel housing

CU/PU is a telematics unit behind the backrest

DVD is a DVD player behind the backrest

When fitting new equipment to be connected to the O-bus it is important that it is connected into the correct side of the existing equipment.

Important

Handle the fibre optic cables with care or the signal may be distorted.

- It is very important that the two leads in the connector are not confused with one another.
- Do not splice the cables.
- Do not bend the cable in a radius smaller than 25 mm.
- Do not expose the cable to temperatures exceeding 85 °C.
- Keep the cable ends free from dirt and grime.
- Do not expose the cable to impact as this may cause the transparent plastic to whiten, thereby reducing the intensity of the light and causing possible communication interruptions.
- The cable should not lie against any sharp edges as this may cause increased signal reduction.

Note

For more detailed information on the different steps in the removal/fitting methods, please refer to the corresponding section in WIS.

1 **Cars with ICM1:** Connect the diagnostic tool and separate the infotainment system's control panel from the car.

Cars with ICM3: Connect the diagnostic tool and separate the telematics unit from the car.

Important

The control module is sensitive to electrostatic discharges. To avoid damaging the internal components in the control module, a replacement must be made with care in the following way:

- Never touch the pins on a control module with hands or clothes.
- Ground yourself by touching the car's body/engine. Unplug the connector from the car's control module.
- Ground yourself by touching the car's body/engine. Plug the connector into the car's control module.
- Deposit the replaced control module in the returns packaging without touching its pin.
- Keep the new control module in its packaging as long as possible.

Go into the "All" menu and select the control module under "Add/Remove". Then select "Remove" and follow the instructions. The ignition key must be in the ON position. TIS2000 may need to be used. When the control module is separated from the car the ignition key must be turned to the OFF position. Following which the control module can be removed.

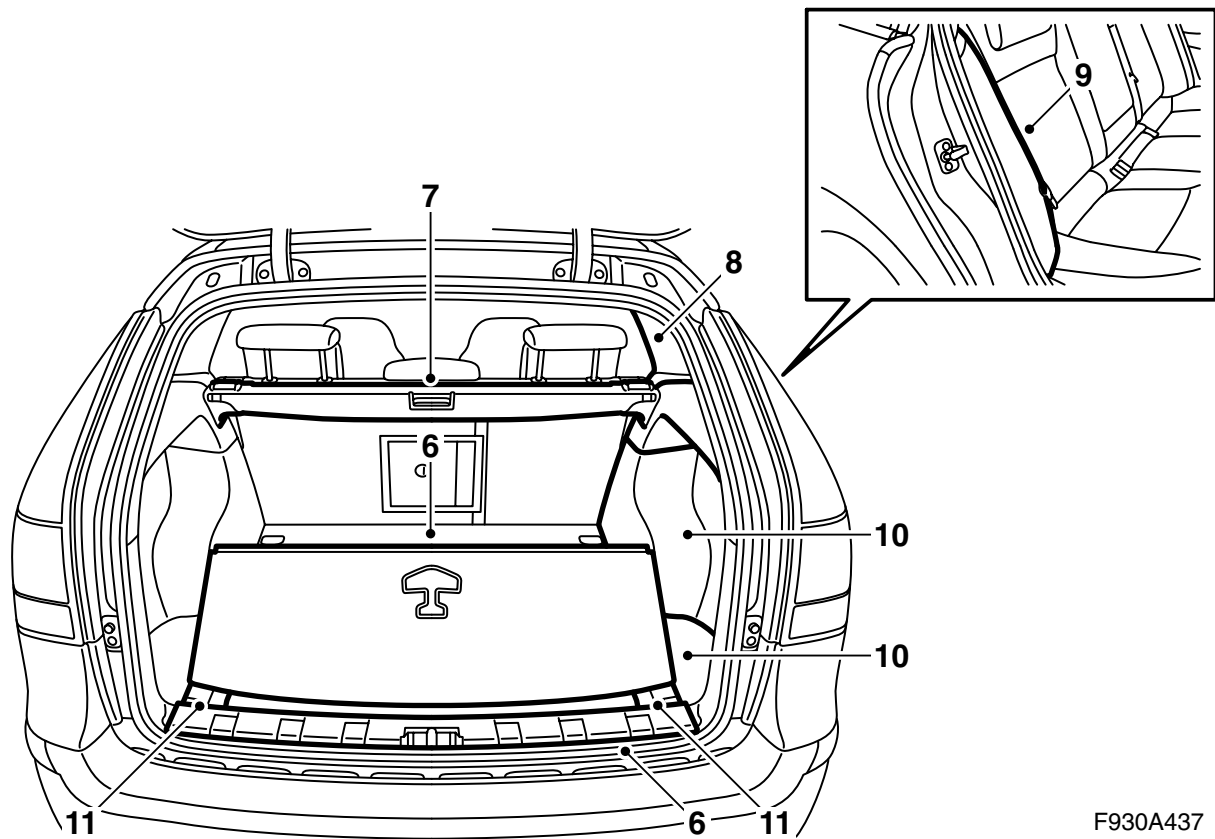
- 2 Take the key from the ignition switch.
- 3 **Cars with ICM1:** Remove the infotainment system (ICM) control panel.

Important

Handle the fibre optic cables with care or the signal may be distorted.

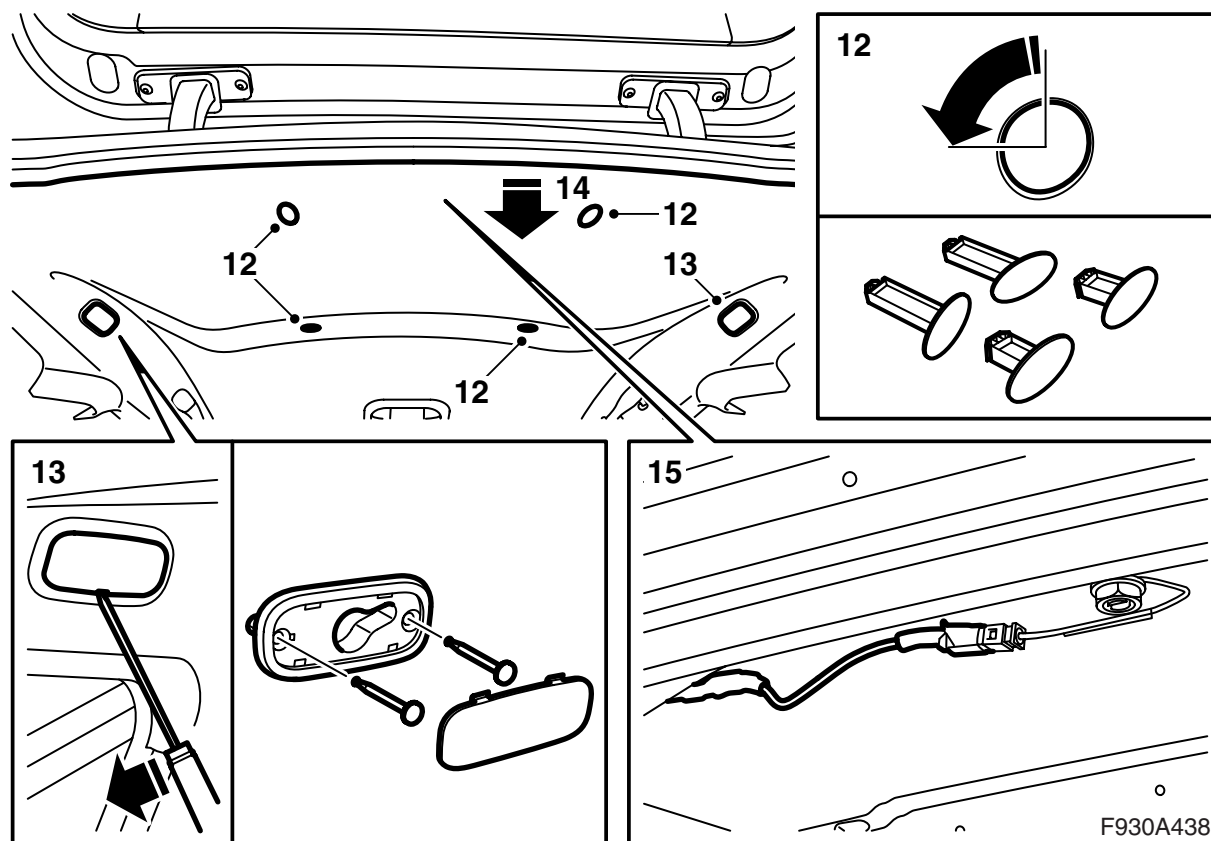
- Do not bend the cable in a radius smaller than 25 mm.
 - Do not expose the cable to impact as this may cause the transparent plastic to whiten, thereby reducing the intensity of the light and causing possible communication interruptions.
 - The cable should not lie against any sharp edges as this may cause increased signal reduction.
-

- 4 **Cars with ICM1:** Fit a new infotainment system (ICM2) control panel.
- 5 Fold down the rear seat backrests.

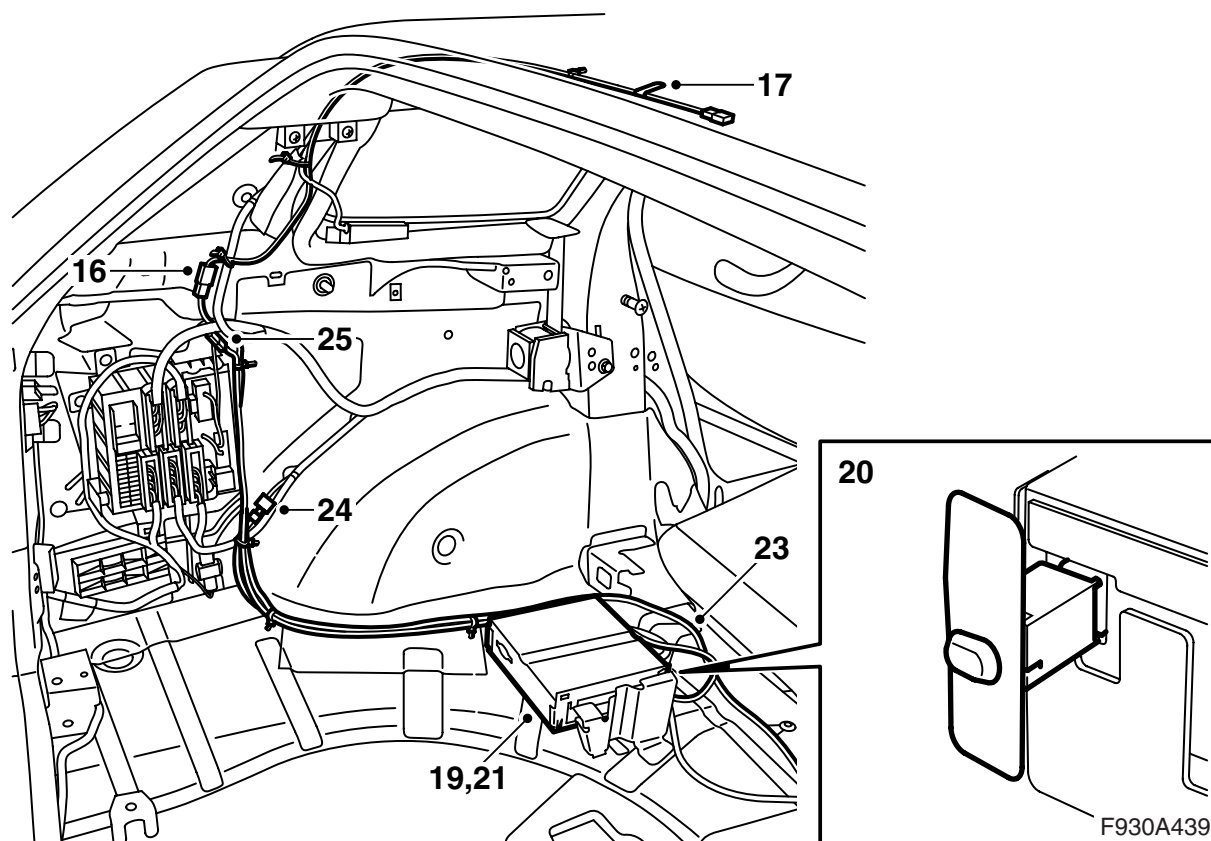


F930A437

- 6 Remove the scuff plate and luggage compartment floor.
- 7 Remove the cargo guard if fitted.
- 8 **Steps 8-11 must be carried out on both sides (cars with ICM3 only on the left-hand side).**
Remove the C-pillar trim.
- 9 Remove the side bolsters.
- 10 Remove the rear side trim and the covers over the storage compartments.
- 11 Remove the foam blocks.



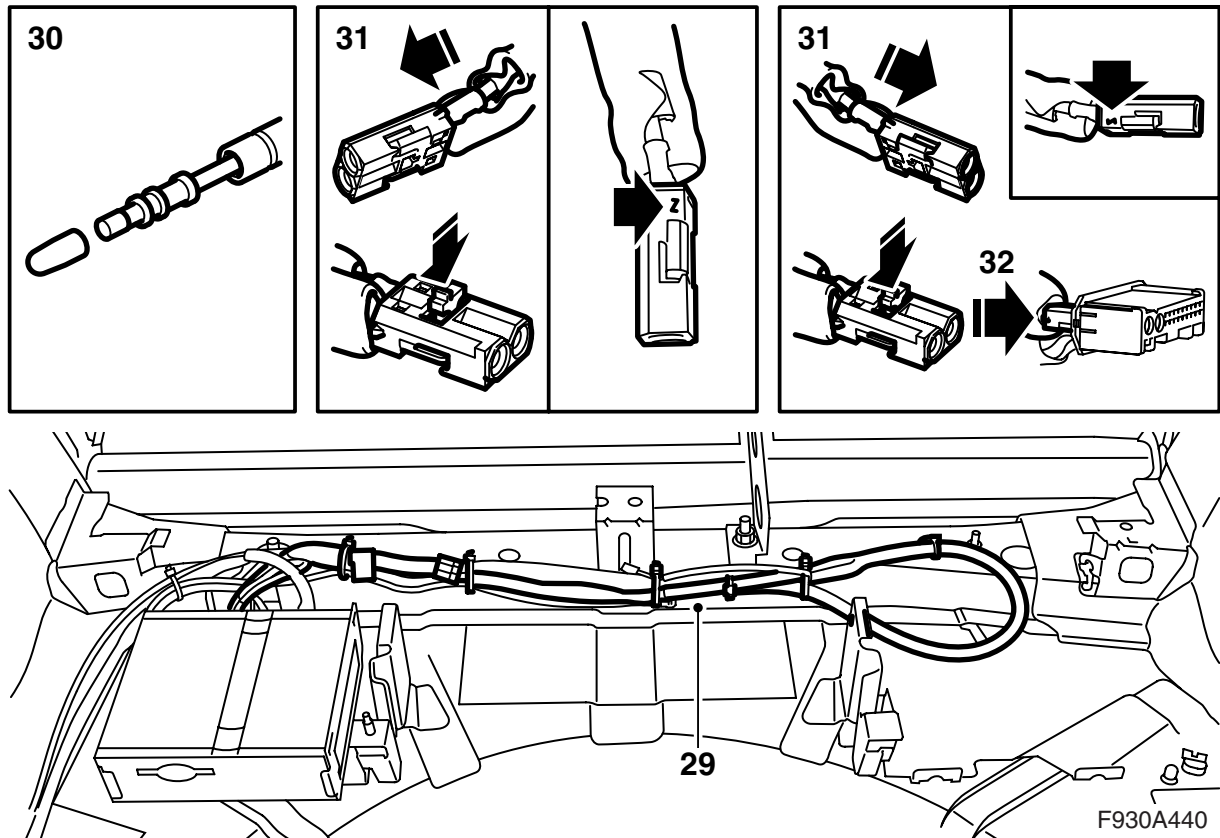
- 12 Remove the headlining's rear and centre clips (by turning them 90°) as well as the holders above the side windows.
- 13 Remove the mountings above the side windows.
- 14 Carefully lower the rear edge of the headlining, enough to reach the antenna. Hold the headlining in place using two removal tools 82 93 474.
- 15 Remove the antenna cable, if fitted, from the antenna. Connect the kit's antenna cable to the antenna's violet connector. Affix the kit's antenna cable up to the left-hand D-pillar.



- 16 Route the new antenna cable along the D-pillar and in front of the electrical centre down to the floor. Follow the car's wiring harness to the telematics unit.
- 17 Tape any removed cable along the new one. Apply anti-rattle tape to the connector.
- 18 Fit the headlining.
- 19 Remove the bracket on the telematics unit and screw in the lower section of the console.
- 20 **Cars without navigation:** Fit the telematics unit behind the rear seat backrest on the left-hand side. Connect the Bluetooth antenna to the telematics unit's yellow antenna connector. Fit the upper section.
- 21 **Cars with navigation:** Replace the telematics unit. Transfer over the Bluetooth antenna.
Continue to step 69.
- 22 Connect the GSM antenna cable to the violet connector.
- 23 Locate the large connector in the kit's wiring harness behind the telematics unit and route the harness along the car's wiring harness by the left-hand wheel housing to the REC.
- 24 Plug the accessory harness' 2-pin connector into the 2-pin connector under the REC by the wheel housing.
- 25 Plug the accessory harness' 3-pin connector into the 3-pin connector above the REC.
- 26 Secure the accessory harness and the antenna cable along the car's wiring harness with cable ties up to the telematics unit. Tape in the connector for the DVD unit.
- 27 **If the car has neither rear amplifier (AMP2) nor navigation:** Go to step 28.
If the car has rear amplifier (AMP2) but no navigation: Go to step 51.

⚠ WARNING

Check that the wiring harness is not pinched. Incorrect fitting can damage the wiring harness and cause a short-circuit/fire.



28 Steps 28-50 apply to cars with neither rear amplifier (AMP2) nor navigation:

Remove the wiring harness from the location for the rear amplifier to the location for the DVD unit.

29 Carefully bend the harness so that the loose fibre optic cables reach the telematics unit.

33 Cut away excess mountings on the wiring harness. Bend back the connector for AMP2. Secure the wiring harness to the member using cable ties.

Important

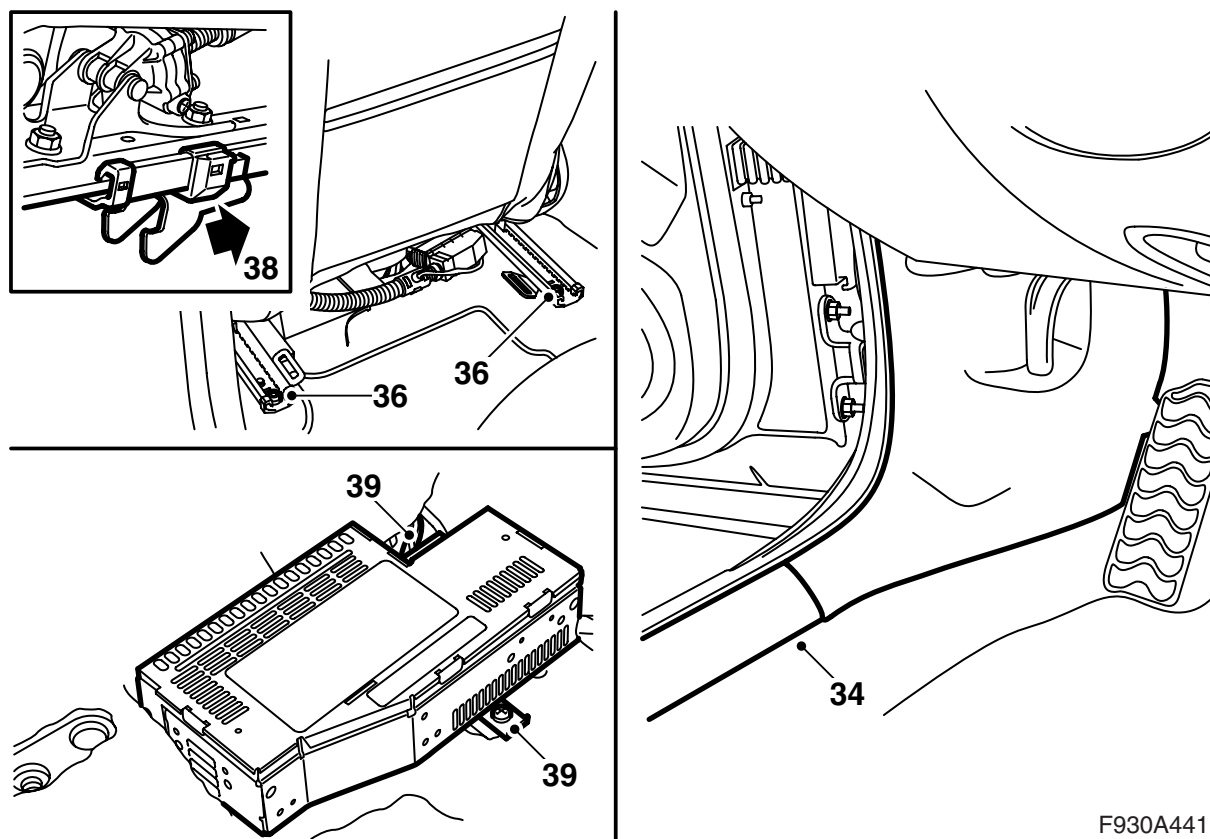
Handle the fibre optic cables with care or the signal may be distorted.

- Do not bend the cable in a radius smaller than 25 mm.
- Do not expose the cable to impact as this may cause the transparent plastic to whiten, thereby reducing the intensity of the light and causing possible communication interruptions.
- The cable should not lie against any sharp edges as this may cause increased signal reduction.

30 Remove the protective cover from the connection on the fibre optic cables.

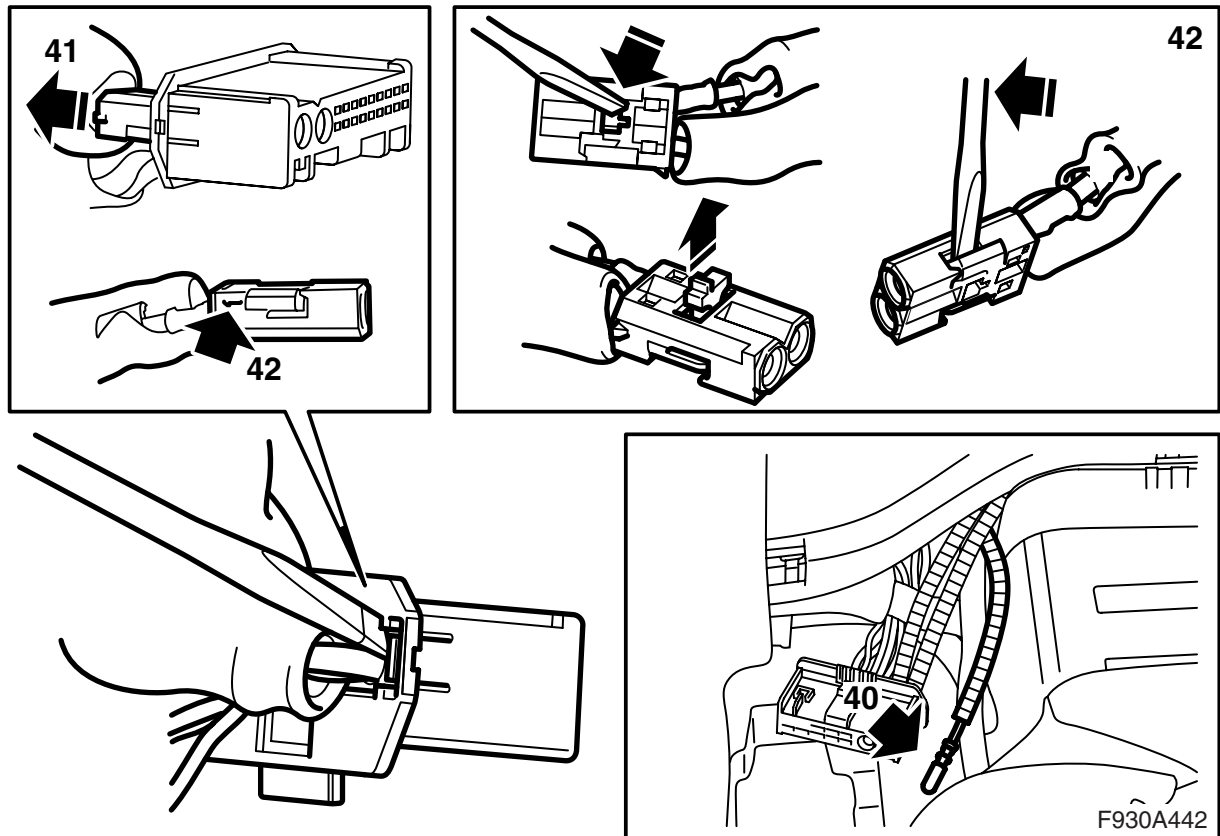
31 Fit the green marked fibre optic cable in position 1 and the blue marked fibre optic cable in position 2 in a fibre optic connector from the kit. Fit the locking clip.

32 Fit the fibre optic connector together with the adapter harness' connector in the kit's connector casing and plug it into the telematics unit.

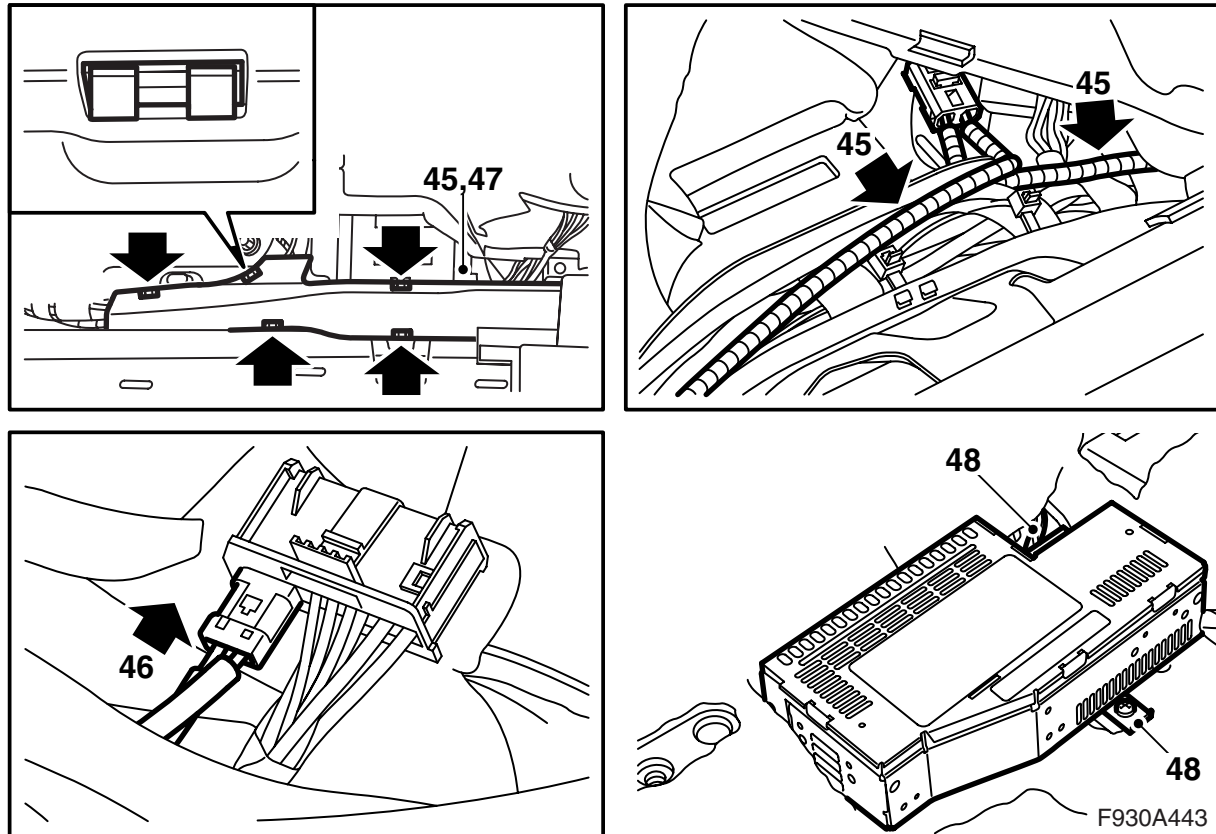


F930A441

- 34 Remove the front scuff plate on the left-hand side of the car.
- 35 Position the left-hand front seat in its most forward position and fold the backrest forwards.
- 36 Remove the two rear retaining screws from the seat.
- 37 Angle the seat forwards.
- 38 Pull the seat back so that the fitting hooks loosen from their positions. Fold the whole seat backwards.
- 39 Remove the amplifier.



- 40 Locate the green marked fibre optic cable by the amplifier.
- 41 Unplug the fibre optic cables' connector (the small connector) from the amplifier's connector.
- 42 Remove the fibre optic cable connected to position 1 by opening the connector locking clip and carefully lifting the hook.
- 43 Remove the protective cover from the connection on the green marked fibre optic cable.
- 44 Fit the protective cover onto the removed fibre optic cable connection and carefully move the fibre optic cable aside in order to prevent damage.



- 45 Remove the cover from the cable duct, check that the green marked fibre optic cable cannot bend and fit it in position 1 in the amplifier's fibre optic connector. Fit the locking clip.

Important

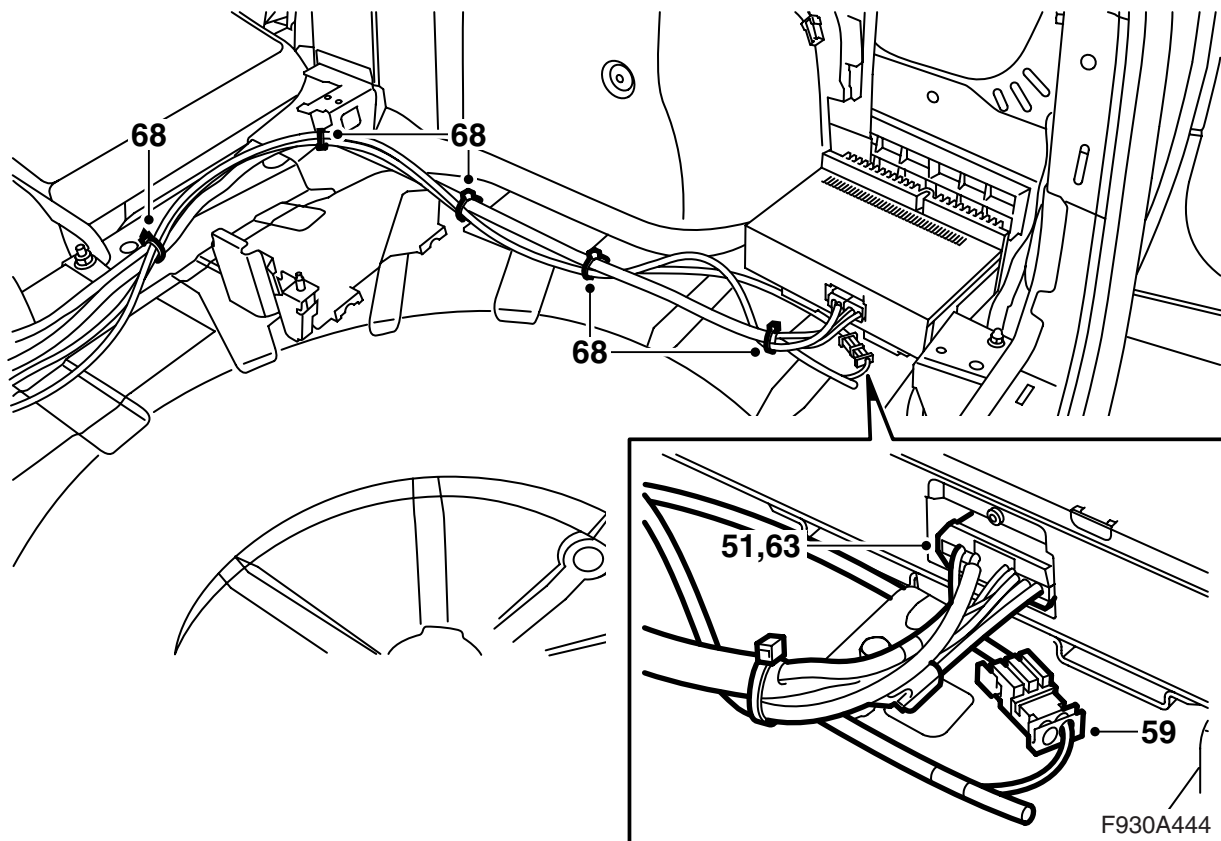
Handle the fibre optic cables with care or the signal may be distorted.

- Do not bend the cable in a radius smaller than 25 mm.
- Do not expose the cable to impact as this may cause the transparent plastic to whiten, thereby reducing the intensity of the light and causing possible communication interruptions.
- The cable should not lie against any sharp edges as this may cause increased signal reduction.

- 46 Plug the fibre optic connector into the large connector.
- 47 Fit the cover to the cable duct, draw back the carpet and guide out the connector and the cables through the hole in the carpet.
- 48 Connect and fit the amplifier.
- 49 Set the seat in its correct position, be careful that the fitting hooks locate themselves correctly into their brackets, and fit the rear retaining screws.

Tightening torque 30 Nm (22 lbf ft)

- 50 Proceed to step 69.



51 Steps 51-68 apply to cars with rear amplifier (AMP2) but without navigation

Unplug the connector from the rear amplifier.

Important

Handle the fibre optic cables with care or the signal may be distorted.

- Do not bend the cable in a radius smaller than 25 mm.
- Do not expose the cable to impact as this may cause the transparent plastic to whiten, thereby reducing the intensity of the light and causing possible communication interruptions.
- The cable should not lie against any sharp edges as this may cause increased signal reduction.

- 52 Unplug the fibre optic cables' connector (the small connector) from the amplifier's connector.
- 53 Remove the fibre optic cable connected to position 1 by opening the connector locking clip and carefully lifting the hook.
- 54 Fit the fibre optic cable in position 1 in a fibre optic connector from the kit.
- 55 Fit the locking clip.
- 56 Remove the protective cover from the connection on one of the extra fibre optic cables.

- 57 Fit the fibre optic cable in position 1 in a fibre optic connector from the kit.

- 58 Fit the locking clip. Apply a piece of tape as marking on the other end.

- 59 Plug the connectors into each other.

- 60 Remove the protective cover from the connection on the second extra fibre optic cable.

- 61 Fit the fibre optic cable in position 1 in the fibre optic connector for AMP2.

- 62 Fit the locking clip.

- 63 Plug the fibre optic connector into the large connector and plug it into the amplifier.

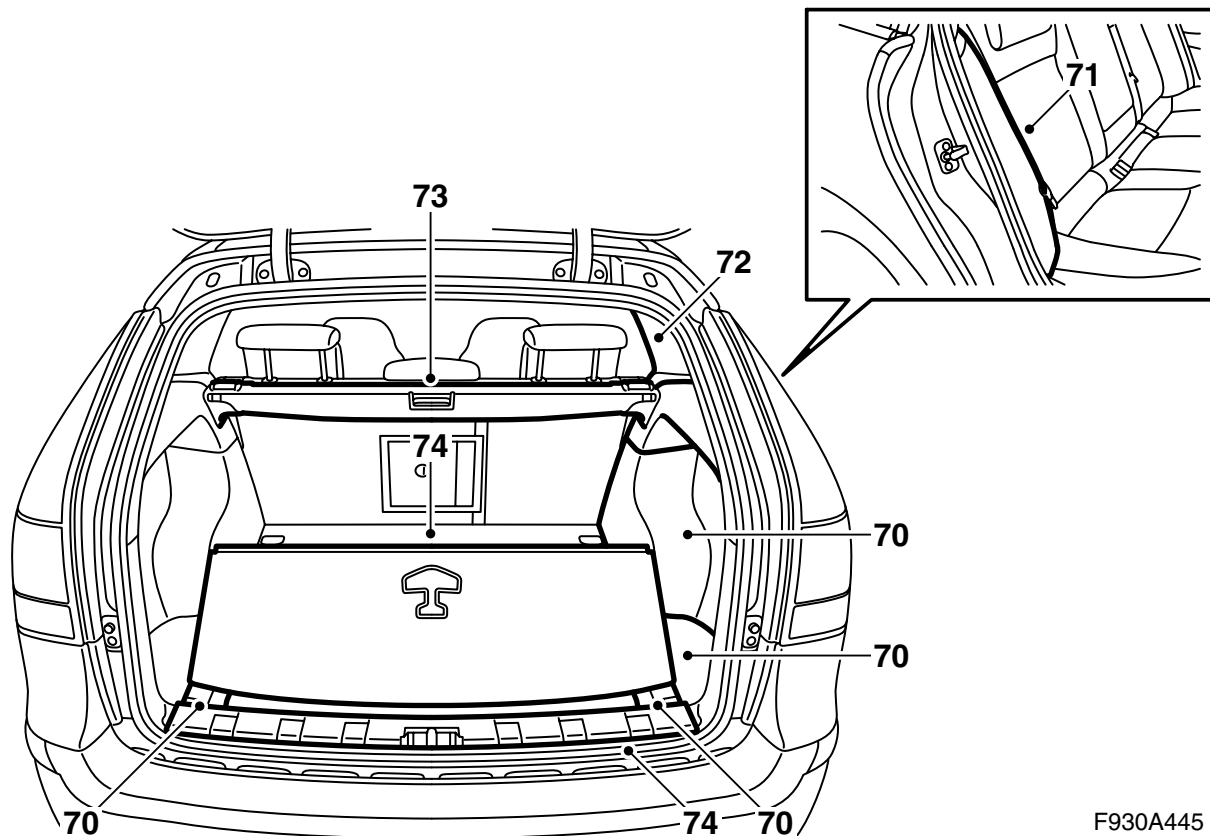
- 64 Route both fibre optic cables away to the telematics unit.

- 65 Remove the protective covers on the fibre optic cables and connect the fibre optic cable marked with tape to position 1 and the unmarked one to position 2 in a fibre optic connector from the kit.

- 66 Fit the locking clip.

- 67 Fit the fibre optic connector together with the accessory harness' connector for the telematics unit in the kit's connector casing and plug it into the telematics unit.

- 68 Secure the fibre optic cables with cable ties starting from the telematics unit. Any excess should be pulled into a hoop by AMP2.



F930A445

69 **Steps 69-72 must be carried out on both sides (cars with ICM3 only on the left-hand side).**

Fit the foam blocks.

70 Fit the rear side trim and the covers over the storage compartments.

71 Fit the side bolsters. Check that the belt is not twisted.

72 Fit the C-pillar trim.

73 Fit the cargo guard if fitted.

74 Fit the luggage compartment floor and scuff plate. Fold up the rear seat and check that it is locked.

75 Connect the diagnostic tool, select car and model year, select "All", select "Add/Remove", select the current replaced/new fitted units and select "Add".

Note

The diagnostic tool will on some occasions need to retrieve a security code in TIS. Information on what to do will be displayed on the diagnostic tool display.

76 Check the system's function.