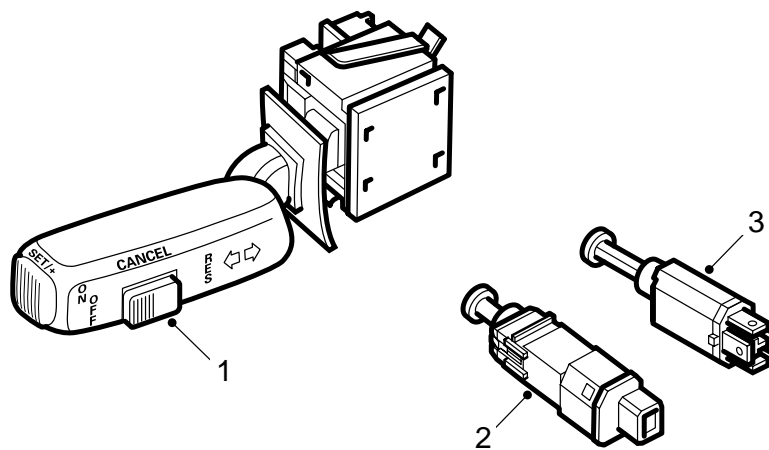




**MONTERINGSANVISNING · INSTALLATION INSTRUCTIONS  
MONTAGEANLEITUNG · INSTRUCTIONS DE MONTAGE**

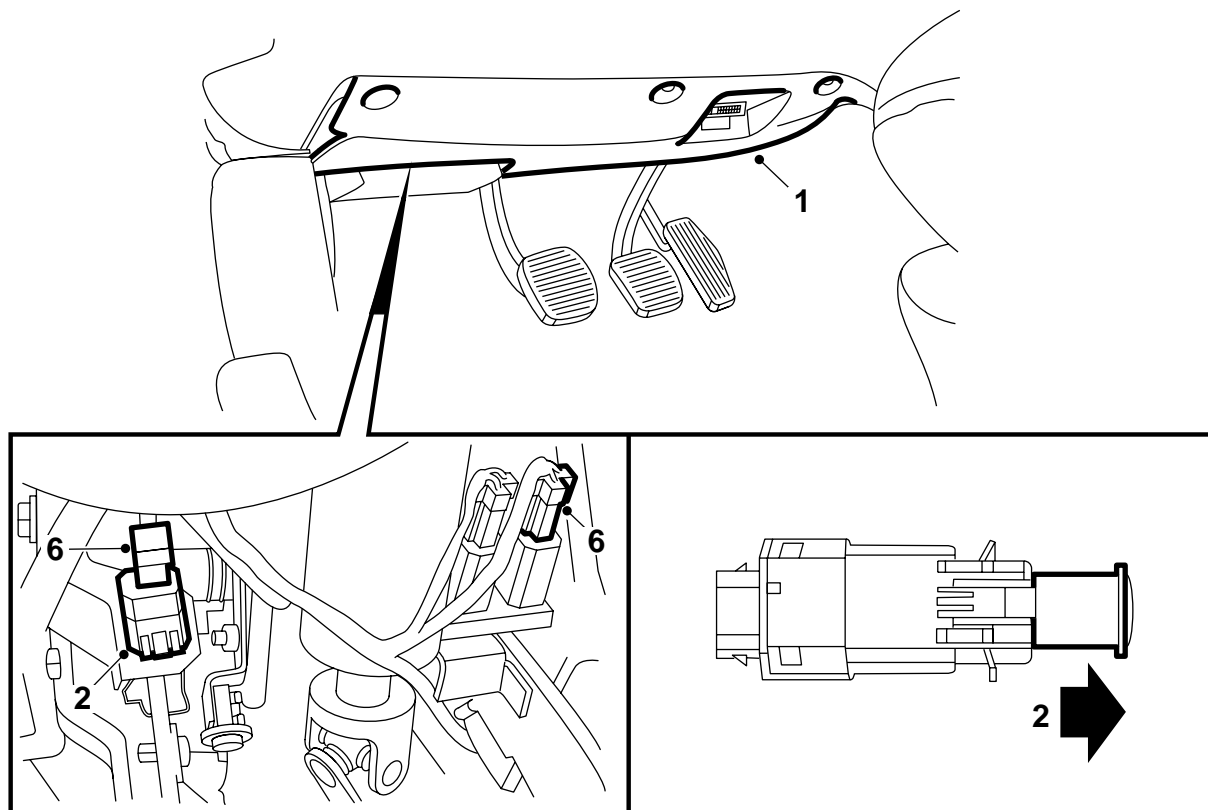
**Saab 9-5**  
Cruise Control

Accessories Part No.	Group	Date	Instruction Part No.	Replaces
32 025 889 400 129 128	3:69-17	Sep 06	86 88 137	86 88 137 Jun 00



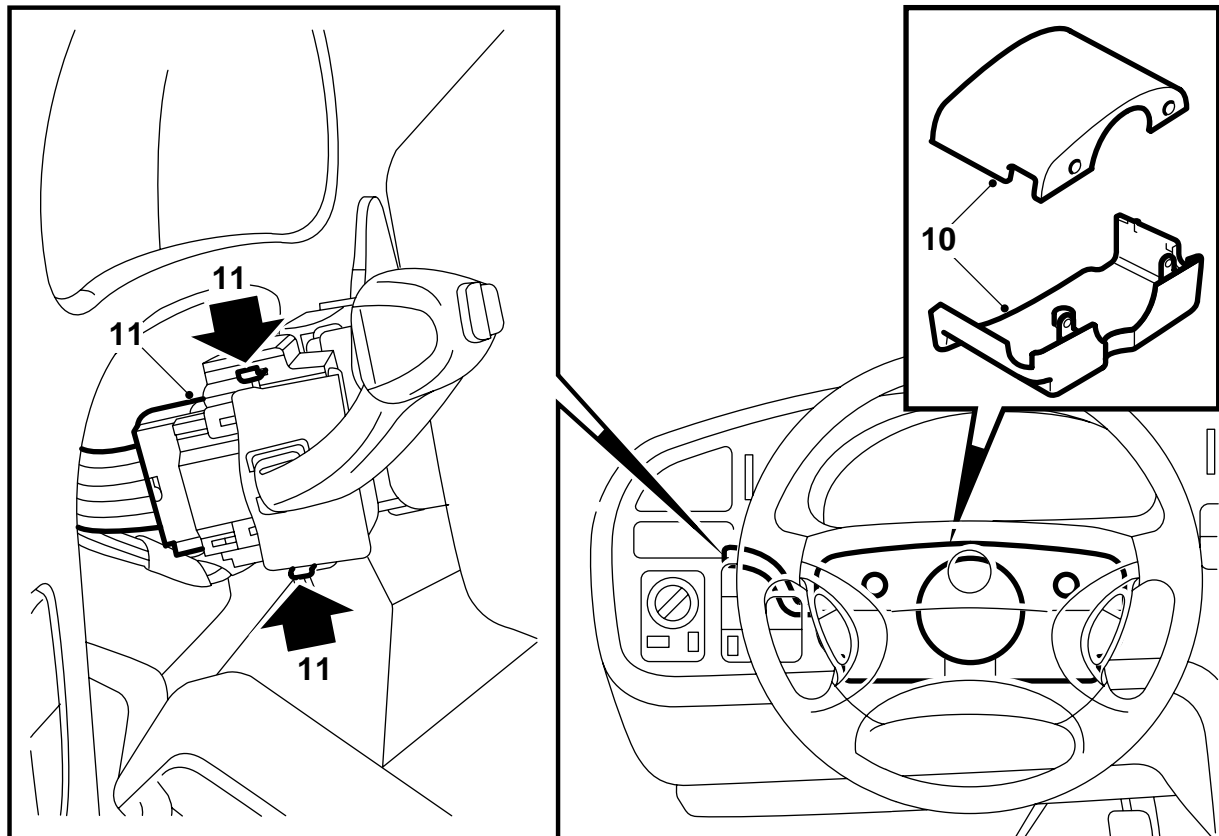
- 1 Switch
- 2 Pedal switch, clutch
- 3 Pedal switch, brake

E368A001



E368A002

- 1 Remove the lower panel.
- 2 Depress the clutch pedal about 100 mm and fit the white pedal switch in the holder. When the switch is locked in place, slide back the red locking sleeve and release the pedal. The pedal switch will then be adjusted automatically.
- 3 Depress the brake pedal and fit the black pedal switch in the holder. Turn the switch through 90° so that it locks in the holder. Release the pedal and the switch will be adjusted automatically.
- 4 Depress the brake and clutch pedals by hand. Check that the pedal switches abut against the pressure plate on the pedal and that a weak "click" is heard on depressing the pedal > 5 mm.
- 5 The car is pre-wired complete with connectors. Follow the leads from the brake lights switch and unplug the connectors from the pedal switches.
- 6 Mount the connectors on the pedal switches:
  - a Green 4-pin connector on the brake pedal switch.
  - b White 2-pin connector on the clutch pedal switch.
- 7 Check that the leads run clear of moving parts.
- 8 Fit the lower panel.



E368A003

9 Loosen the steering wheel adjusting lever. Pull the steering wheel rearwards and downwards. Remove the upper steering column cowl section.

10 Move the steering wheel to its upper position and remove the lower steering column cowl section.

11 Remove the switch by pressing in the catches and withdrawing it from the holder. Unplug the connector from the switch.

12 Plug the connector into the assembly kit's switch and fit it in the holder. Check that the switch is locked in the holder.

13 Fit the steering column cowl sections.

14 Drive the car on test and check the functionality of the switch and pedal switches.

- Drive the car at about 50 km/h and press "SET". Release the accelerator and the car should maintain a constant speed.
- Press lightly on the brake pedal. The Cruise Control will be disengaged.
- The speed of the car drops to about 40 km/h, press "RES". The car accelerates and returns to a steady speed of 50 km/h.
- Press lightly on the clutch pedal. The Cruise Control will be disengaged.
- The speed of the car drops to about 40 km/h, press "RES". The car accelerates and returns to a steady speed of 50 km/h.

- Press "SET" and keep it pressed for about 2 seconds. The car accelerates and maintains the speed it had when the "SET" button was released.