



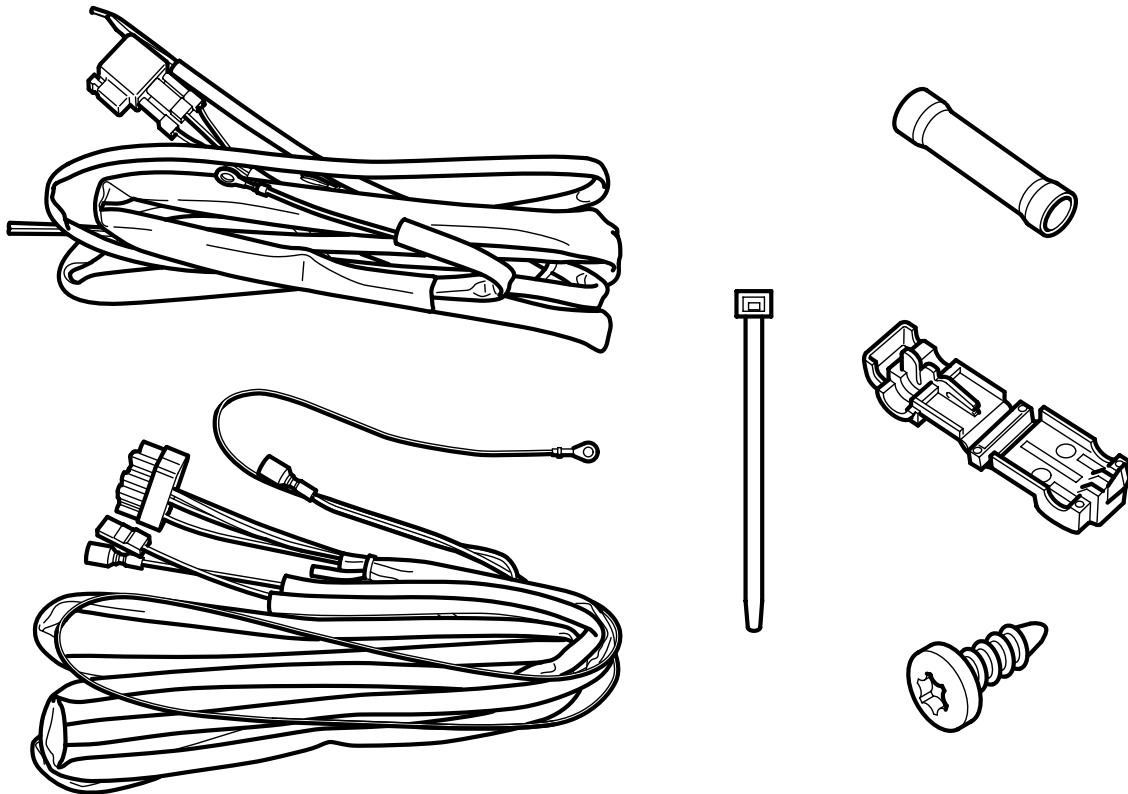
**SAAB**

**MONTERINGSANVISNING · INSTALLATION INSTRUCTIONS  
MONTAGEANLEITUNG · INSTALLATIONS DE MONTAGE**

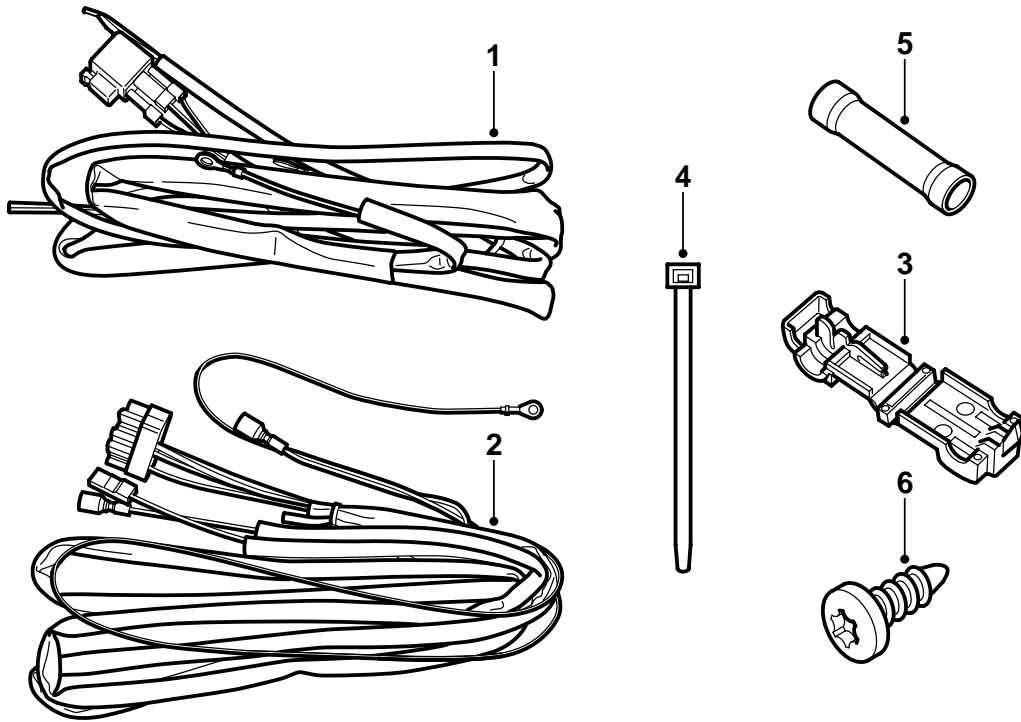
## Saab 900 M94-, Saab 9-3

Wiring harness for spotlights

Accessories Part No.	Group	Date	Instruction Part No.	Replaces
400 100 871	3:51-25	Oct 99	86 78 823	86 78 823 Jul 99

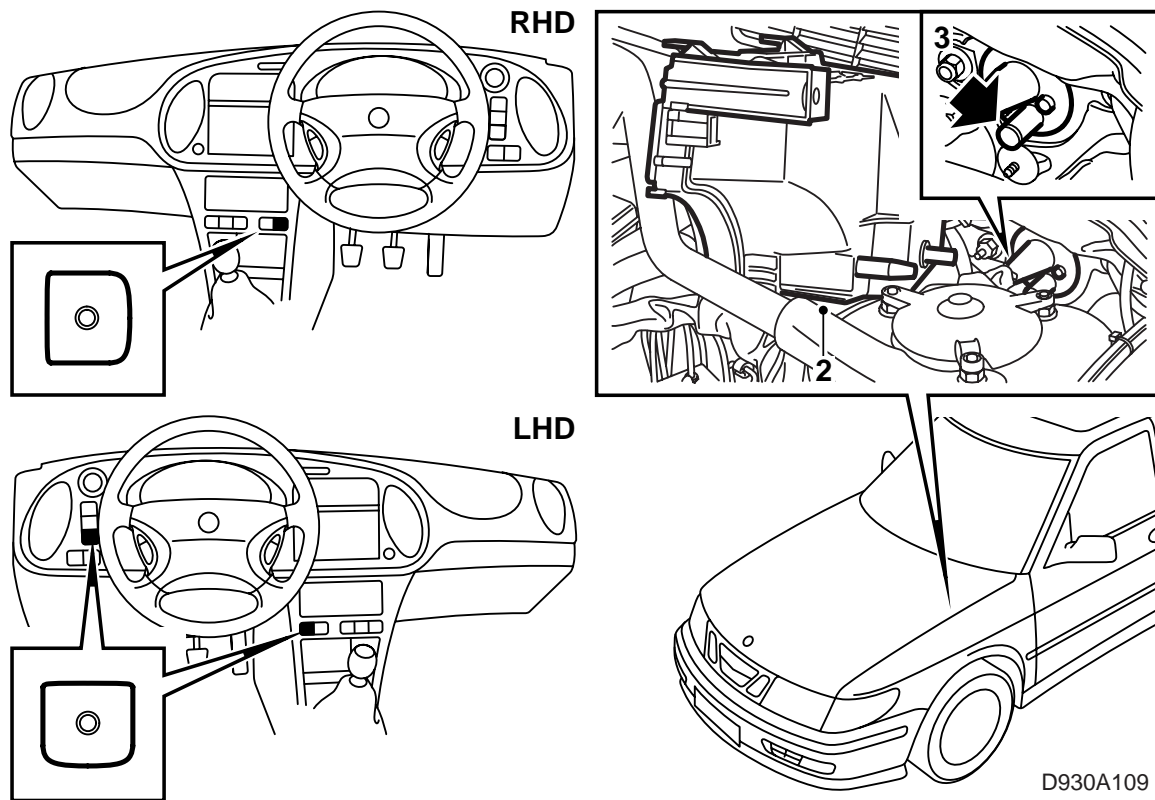


D930A107



D930A108

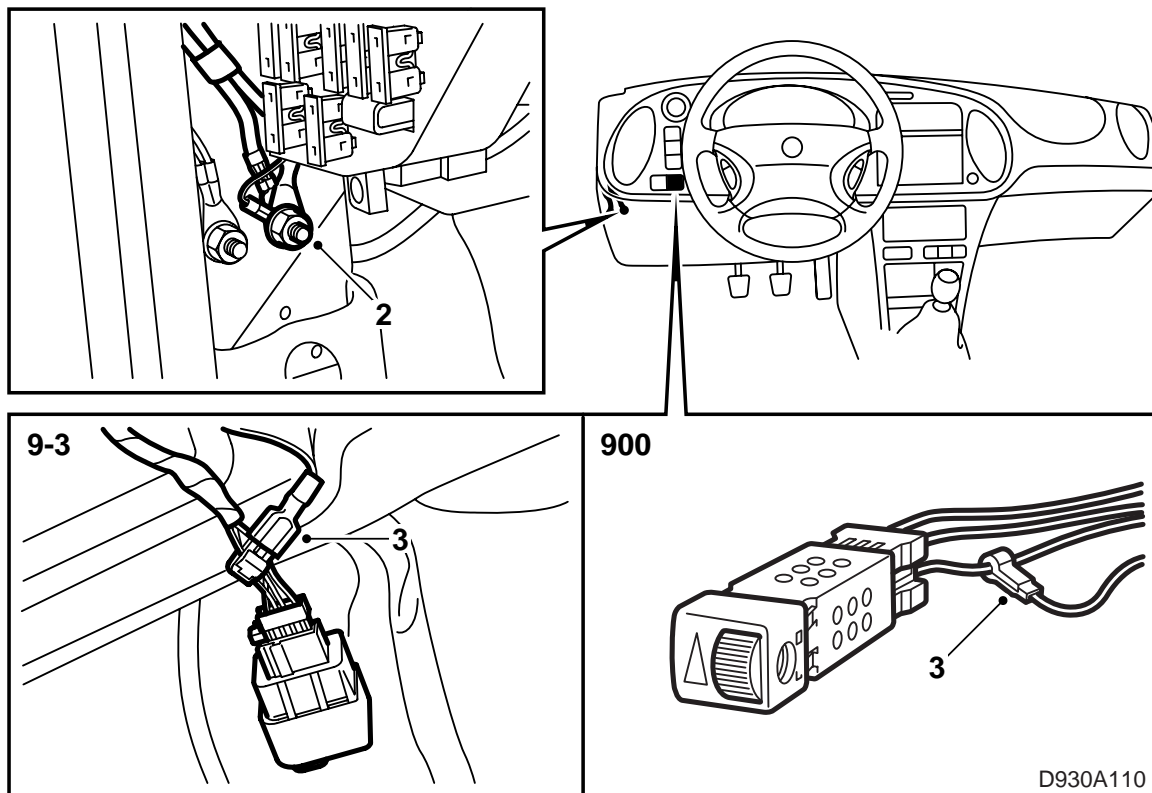
- 1 Wiring harness, supply
- 2 Wiring harness, power supply
- 3 Shunt (2x)
- 4 Cable tie (5x)
- 5 Junction pipe (4x)
- 6 Screw



D930A109

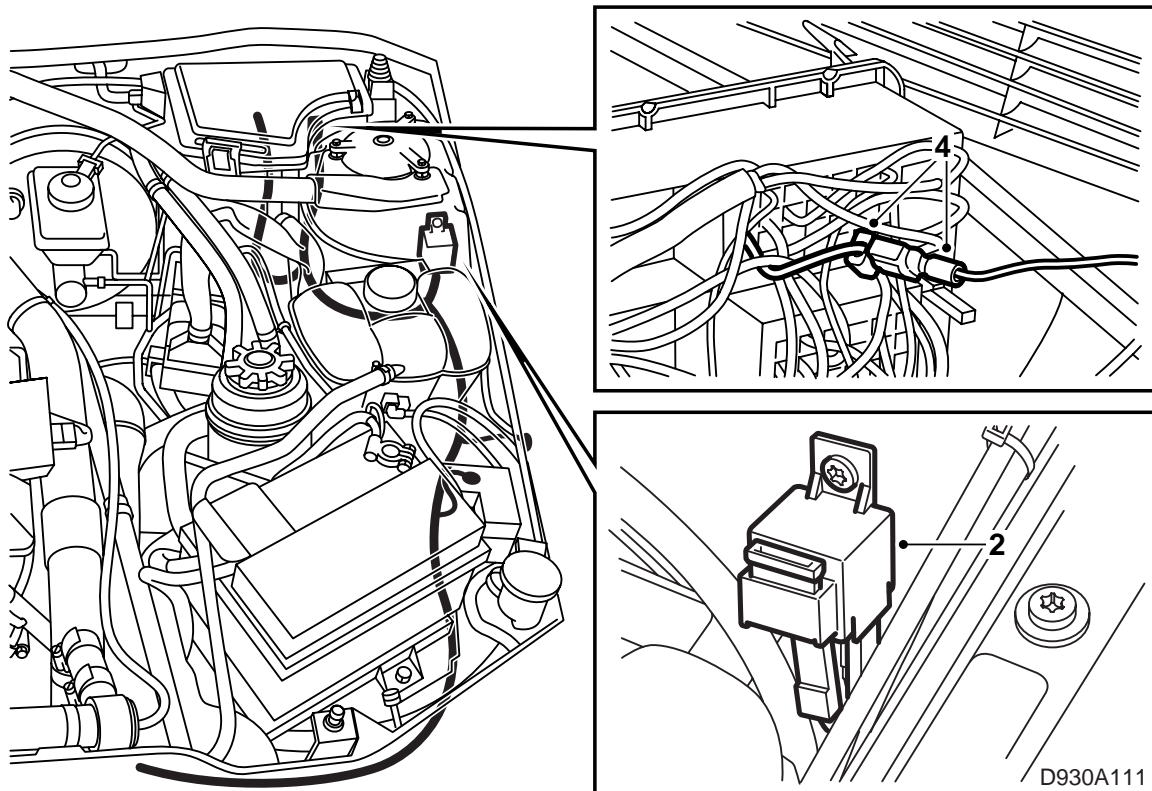
The recommended location of the switch is shown in the illustration.

- 1 **LHD:** Remove the lower dashboard panel, air duct and knee protection under the steering wheel.
- RHD centre console location:** remove the glove box.
- 2 Disconnect the negative battery cable and dismantle the front fuse box in the engine bay.
- 3 There is a rubber grommet located behind the fuse box that leads into the cabin. Cut a hole in the larger of the rubber plugs.



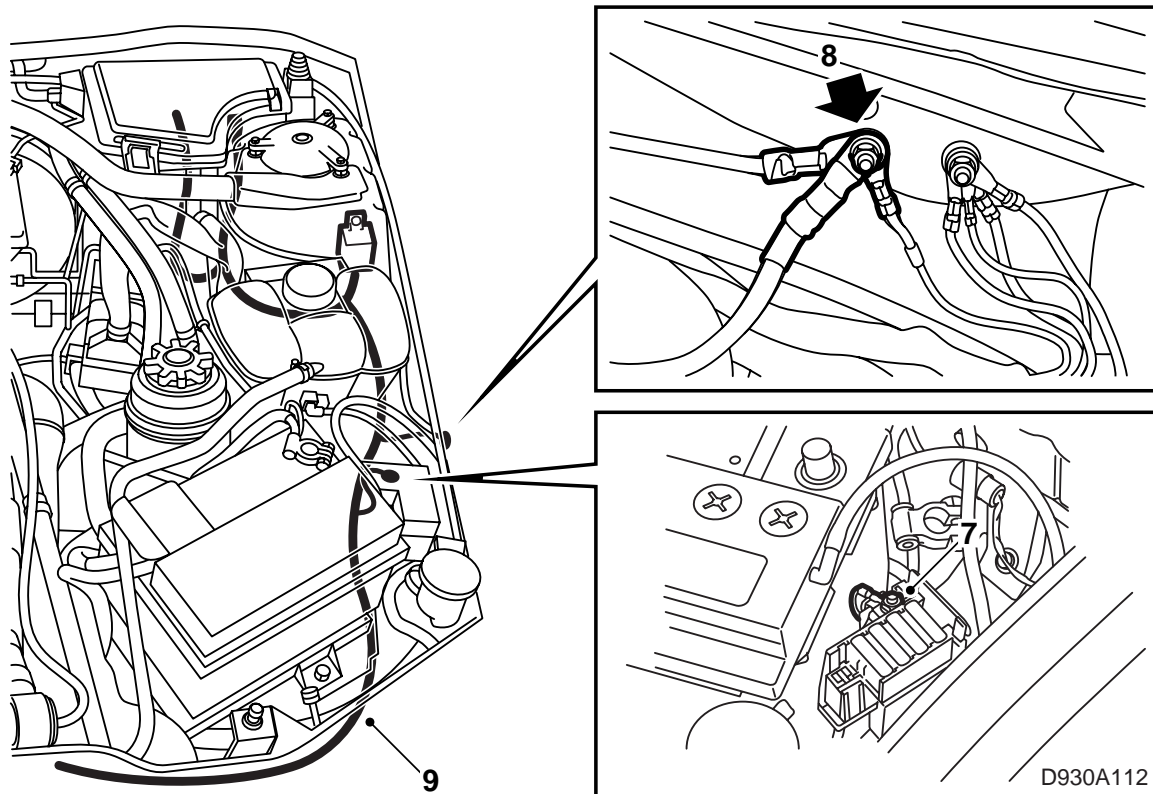
### To do in the cabin

- 1 Insert the yellow and the blue cables through the rubber grommet from the cabin into the engine bay. Use a piece of steel wire to help.
- 2 **LHD:** Run the black ground cable to the grounding point located by the driver's door just below the dashboard behind the carpet (G35). It is the grounding point without the yellow marking.  
**RHD centre console location:** Run the black ground cable to the grounding point located by the passenger door just below the dashboard behind carpet (G35). It is the grounding point without the yellow marking.
- 3 The grey/red cable is used for switch illumination.  
 When fitting the switch in the dashboard, the cable is to be shunted to the rheostat, connecting pin 5 (Saab 900) or pin 3 (Saab 9-3).  
 When fitting the switch in the centre console, the cable is to be shunted to the switch for the electrically heated front seat, connecting pin 1.
- 4 Remove the dummy button from the dashboard, connect the new button and fit it.



### To be done in the engine bay

- 1 Run the wiring harness for the spotlights along the left-hand side of the engine bay.
- 2 Place the relay board and relay with fuse on the suspension strut behind the expansion tank.  
Drill a 3.5 mm hole.
- 3 Divide the main fuse box rubber grommet and run the cable from the cabin and the cable ends for the power supply along the wiring harness to the main fuse box.
- 4 Shunt the blue cable with the flat pin to the bulb check in position **E** as follows:
  - If spotlight function connected to connection 56a.
  - If front fog light function is connected to connection 56b.
- 5 Refit the main fuse box relay board and its rubber grommet, and screw the relay board to the suspension strut.



#### To be done in the engine bay (cont.)

- 6 Run the wiring harness beside the expansion tank down to the maxi fuse board.
- 7 Connect the cable terminal to the maxi board.
- 8 Connect the ground cable to the front grounding point by the battery.
- 9 Run the wiring harness to where the spotlights or front fog lights are to be fitted.  
Connect the lamps to the wiring harness with the four junction pipes.
- 10 Secure the wiring harness with cable ties in exposed places.
- 11 Check the operation.
- 12 Refit all dismantled components.

## Wiring harness for spotlights

