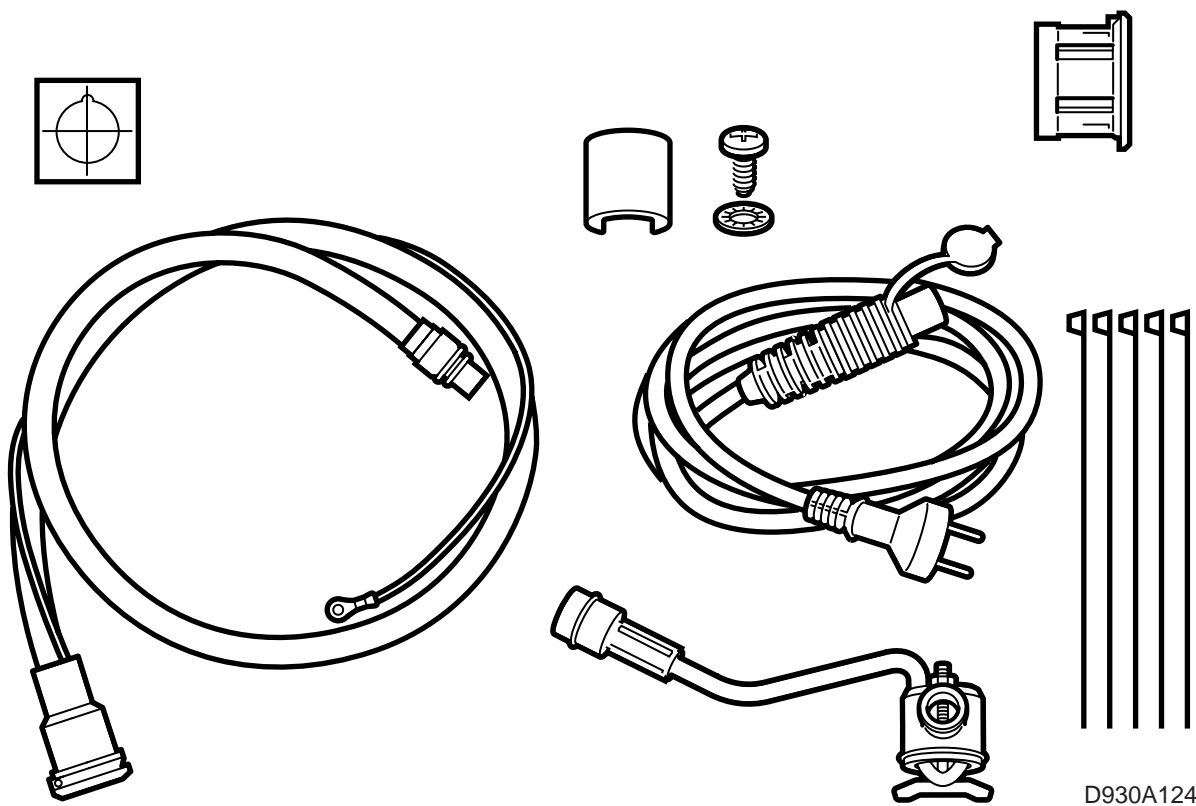


**SAAB****MONTERINGSANVISNING · INSTALLATION INSTRUCTIONS
MONTAGEANLEITUNG · INSTALLATIONS DE MONTAGE**

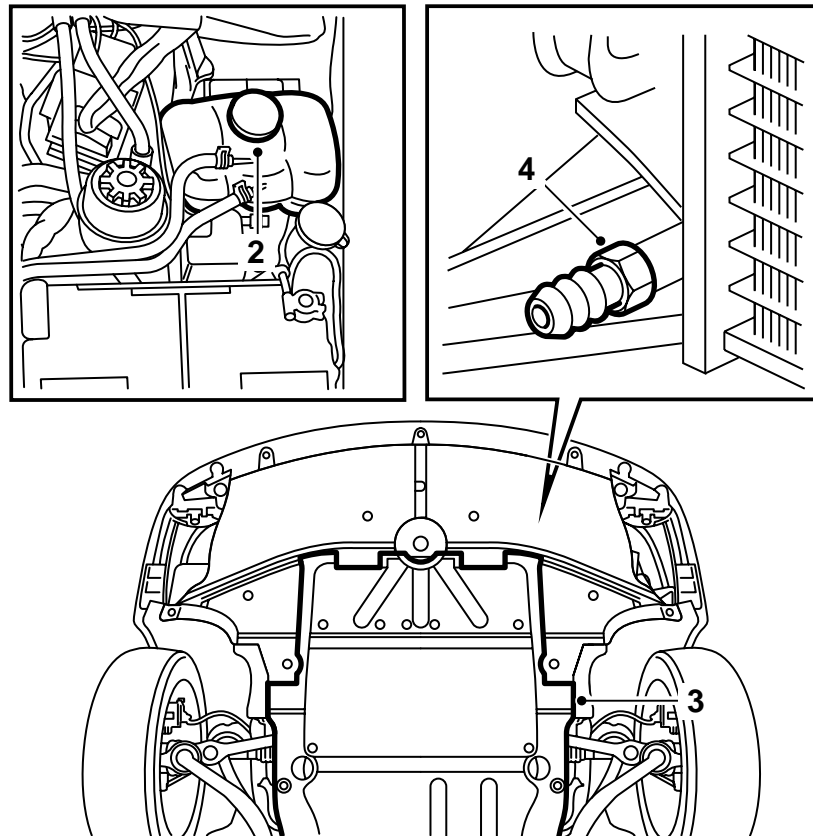
Saab 9-3 D223

Parking heater

Accessories Part No.	Group	Date	Instruction Part No.	Replaces
400 110 375	9:87-12	Jan 00	47 25 065	47 25 065 Nov 99



- 1 Extension cable
- 2 Socket and connecting cable
- 3 Expanding sleeve
- 4 Self-adhesive template
- 5 Screw 4.8x10, 1 pc.
- 6 Star washer, 1 pc.
- 7 Heater element
- 8 Lock clip
- 9 Cable tie, 5 pcs.



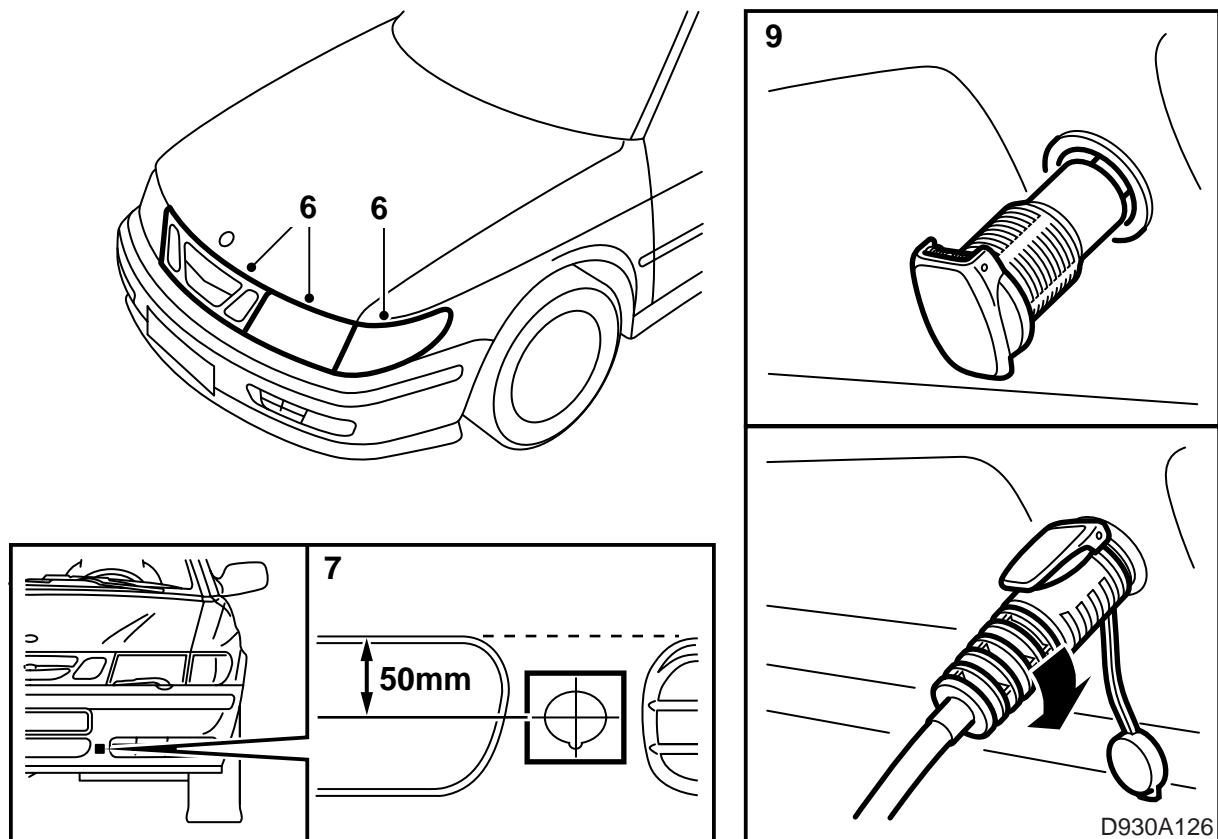
D930A029

- 1 Read the installation instructions completely and make sure all the parts are present in the kit.
- 2 Cover the wings with protective covers and remove the cap on the cooling system expansion tank.

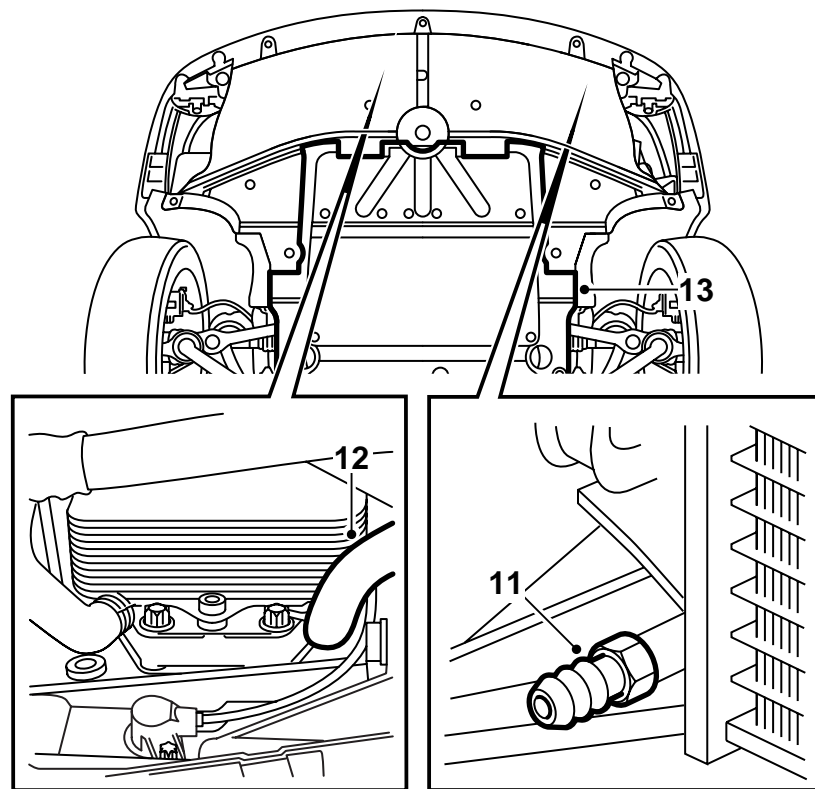
⚠ WARNING

Be careful if the engine is warm, as the coolant may be hot. There is also a risk for burns on the exhaust manifold.

- 3 Raise the car. Remove the lower engine cover.
- 4 Take out a receptacle for the coolant. Open the drain plug, attach a hose and drain the coolant.

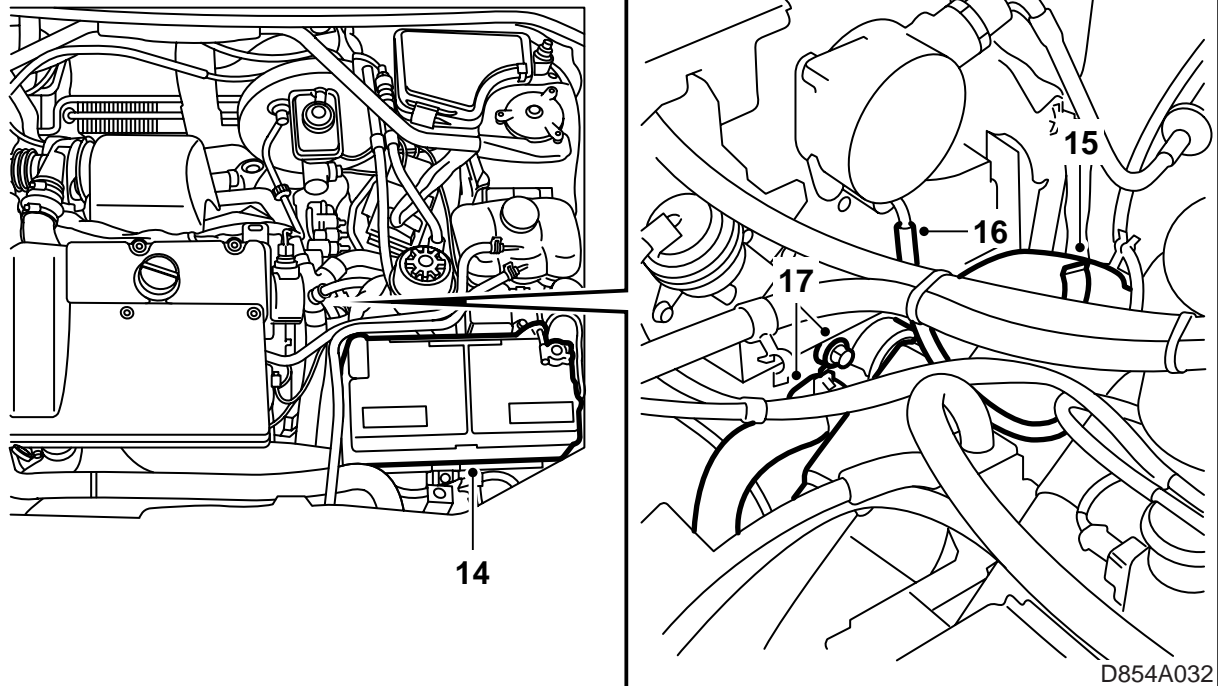


- 5 Lower the car to a suitable working height for fitting the socket on the bumper shell.
- 6 Remove the grille, the left-hand light cluster and the left-hand headlamp.
- 7 Mark where to cut out for the socket using the self-adhesive template. Place a ruler or a piece of tape above the openings in the bumper and measure out where the template is to be positioned, see illustration.
- 8 Carefully make a hole with a **30 mm** hole saw. Remove any burrs around the hole and file a lock groove with a 4 mm round file.
- 9 Insert the socket expander sleeve and fit the socket. Run the connecting cable in front of the radiator so that it does not fasten on the temperature sensor cable during fitting. Use the extension cable to secure the socket. Turn clockwise until the socket is secure.

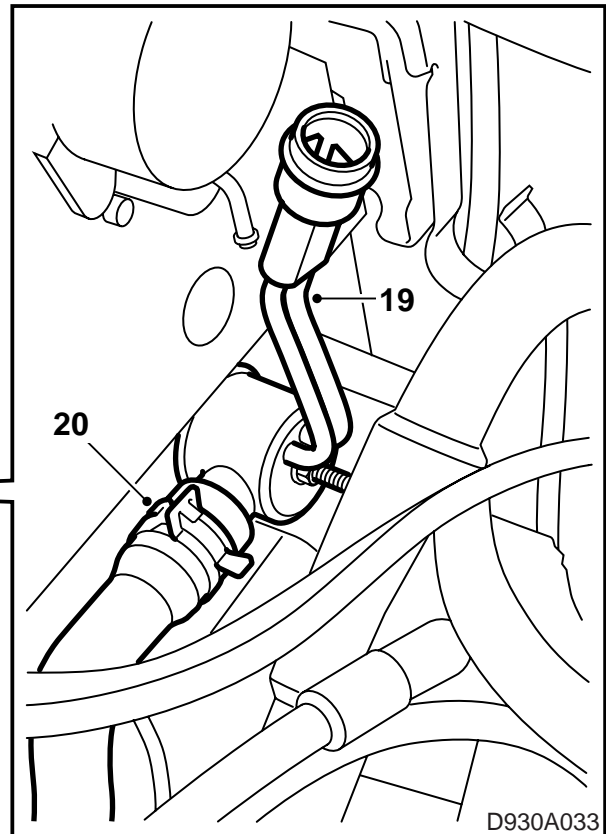
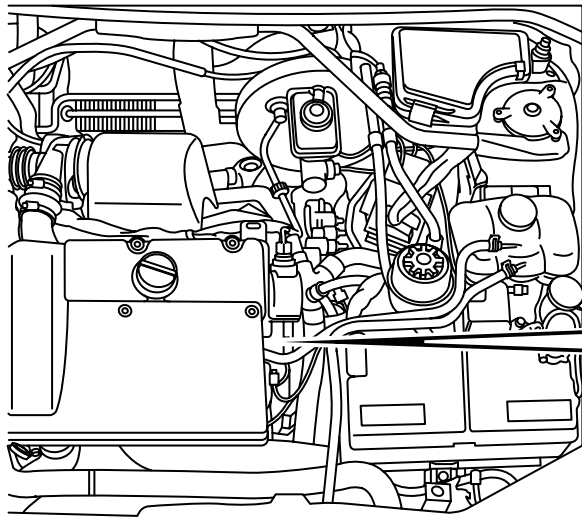


D930A031

- 10 Raise the car.
- 11 Detach the hose and tighten the drain plug.
- 12 Place the receptacle in a suitable position and detach the coolant hose between the engine block and the heat exchanger. Drain the coolant and reconnect the hose.
- 13 Fit the lower engine cover.

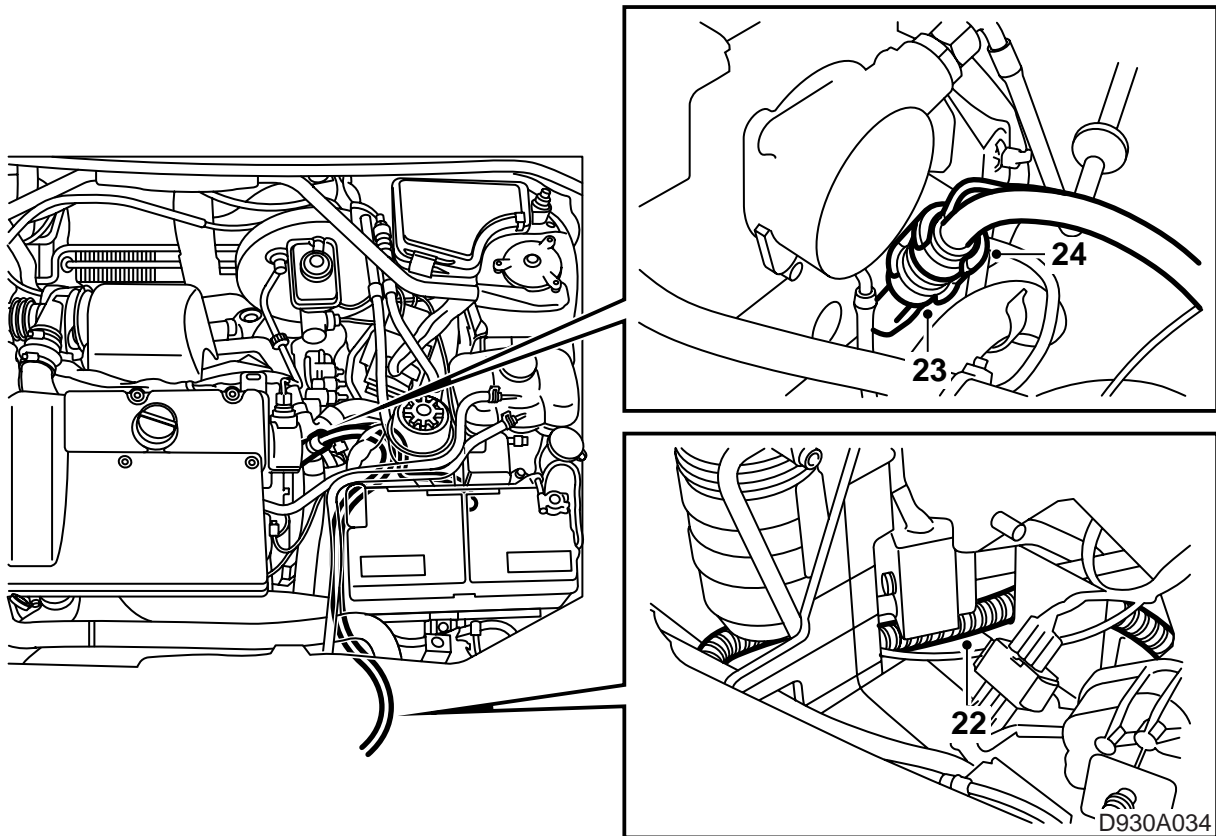


- 14 Lower the car. Undo the battery cables, the battery vent hose and remove the battery.
- 15 Detach the coolant hose from the holder on the engine block.
- 16 Remove the thin vacuum hose from the vacuum pump.
- 17 Detach the coolant hose and remove the coolant connection on the engine block. Clean the sealing surface on the engine block.



D930A033

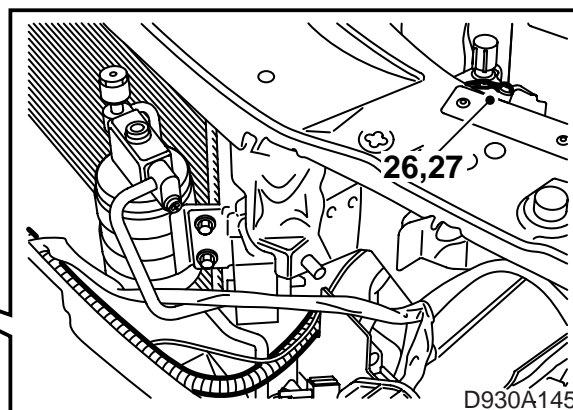
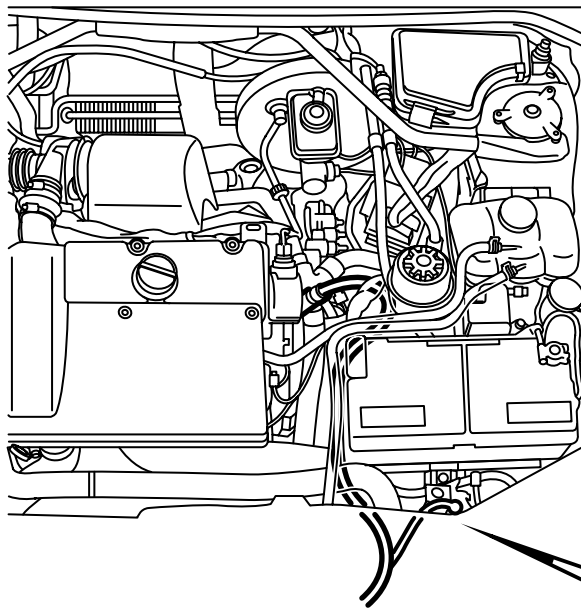
- 18 Apply acid-free vaseline, part no. 30 06 665 or equivalent, to the O-ring on the heater element.
- 19 Insert the heater element. Make sure the connecting pipe is fitted at the same angle as the original hose connection. Also, make sure that the back stop does not pinch the electrical leads. Tighten the nuts securing the heater element.
- 20 Fit the coolant hose on the heater element and reattach the coolant hose to the holder on the engine block.
- 21 Reconnect the vacuum hose to the vacuum pump.



- 22 Run the connecting cable to the heater element as illustrated.
- 23 Apply acid-free vaseline, part no. 30 15 286 or equivalent, to the O-ring on the connecting cable and connecting the cable to the heater element.
- 24 Fit the lock clip over the connection. A click should be heard when the lock clip is correctly fitted.
- 25 Secure the cable with cable ties.

⚠ WARNING

Make sure the cable is not lying against sharp edges or hot surfaces. Damage caused by chafing and melting can cause short circuits.



- 26 Drill a 3.5 mm hole in the plate behind the left-hand headlamp, see illustration.
- 27 Scrape off paint to give a good ground connection and screw on the ground lead with the 4.8x10 screw and star washer. Spray with light underseal, part no. 30 15 971 or equivalent.
- 28 Check the ground connection between the ground pin in the socket, the heater element housing and the car body.
- 29 Fit the battery, connect the battery cables and attach the battery vent hose.
- 30 Fill with coolant and check the integrity of the system.
- 31 Bleed the system as follows:

Note

AC/ACC must be OFF.

Connect the exhaust hose to the auxiliary heater.

Start the engine.

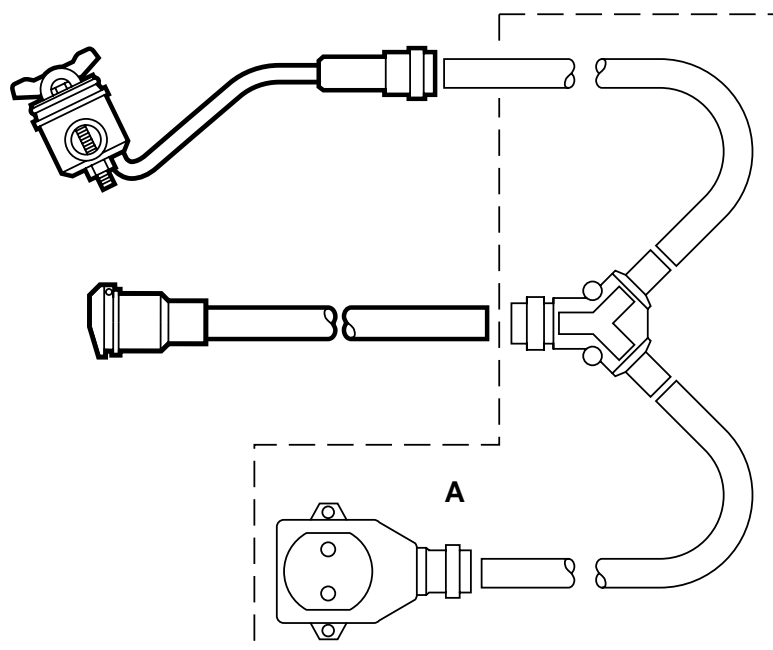
Start the auxiliary heater with the diagnostic tool. (Body, SID, Read Values / Activate, Parking heater). The auxiliary heater stops when the engine temperature has reached 85 °C or on exiting the menu for the auxiliary heater.

Make sure there is a continuous flow of coolant in the hose from the thermostat housing to the expansion tank.

Run the engine until the thermostat opens. Perform step 32 meanwhile.

Turn off the engine, carefully open the cap on the expansion vessel and top up to MAX level. Close the cap.

- 32 Fit the headlamp, light cluster and grille. Set the clock and radio code where appropriate.
- 33 Check the integrity of the system and the function of the heater.
- 34 Place the installation instructions in the car and inform the customer of the user instructions.



D930A036

A Branch wiring kit

User instructions

- The extension lead must be a rubber cable, resistant to oil and approved for outdoor use with an area of at least 3x1.5 mm².
- The parking heater must be connected to a grounded outlet only.
- Treat all cables with caution. Watch out for damage caused by jamming the cable between the hood (bonnet) and the car body, and for cuts caused by sharp metal objects.

⚠ WARNING

Check the ground connection between the ground pin in the socket, the heater element housing and the car body regularly.

- Inspect the extension lead regularly for damage and ageing. A damaged lead must be replaced immediately.

Note

The function of the heater can be at risk if:

- the coolant is polluted
- the coolant level is too low or if there is air in the system
- ice sludge is present in the system
- radiator cement is used