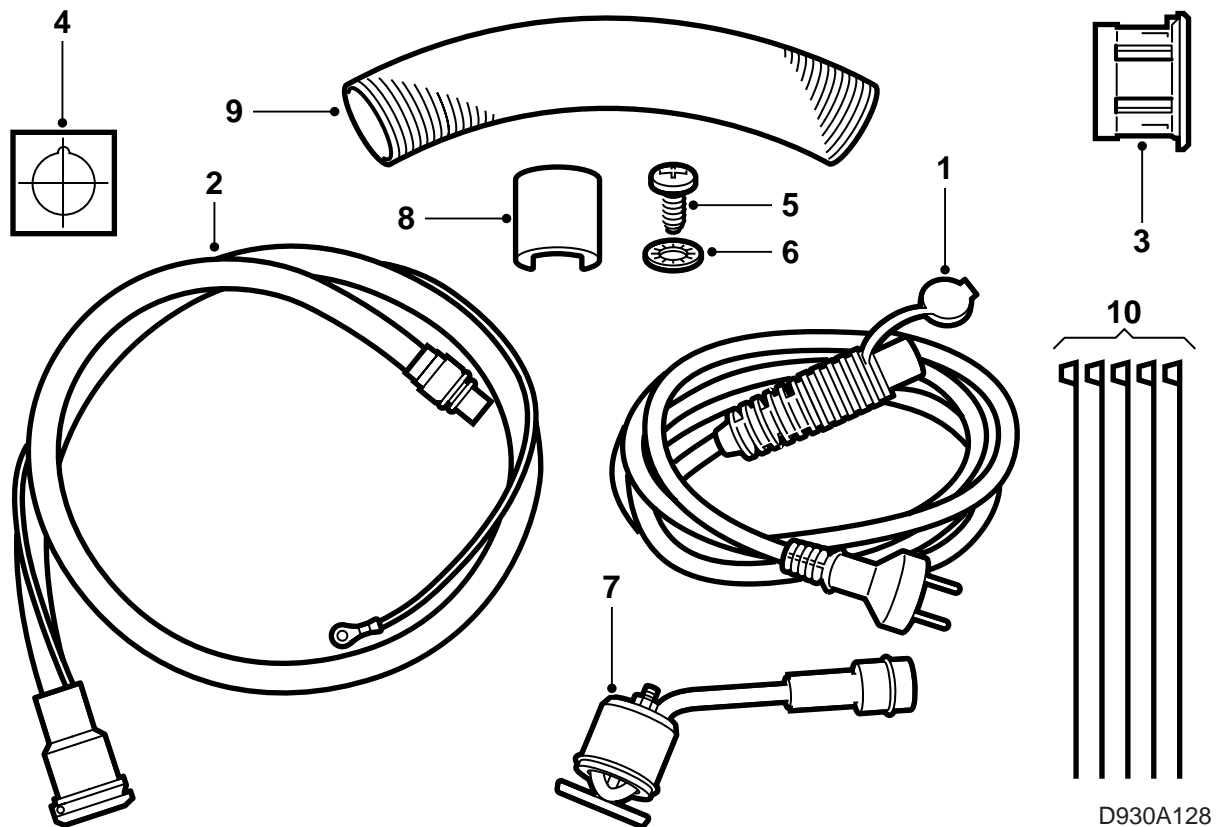


**SAAB****MONTERINGSANVISNING · INSTALLATION INSTRUCTIONS  
MONTAGEANLEITUNG · INSTALLATIONS DE MONTAGE**

## Saab 900 2,0/2,3 M94-, Saab 9-3 2,0/2,3

Parking heater

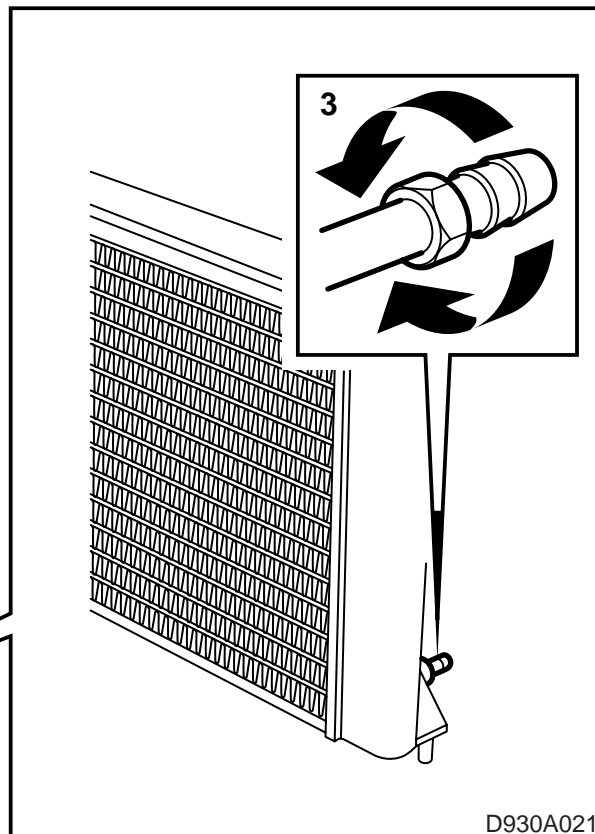
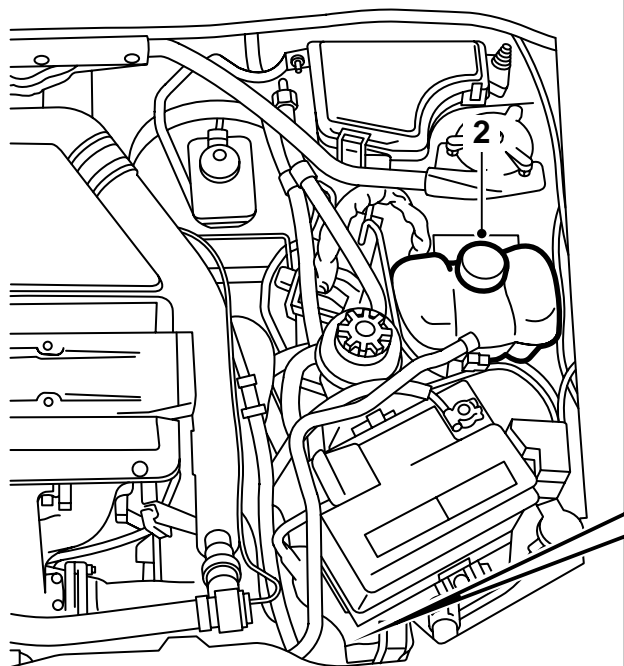
Accessories Part No.	Group	Date	Instruction Part No.	Replaces
400 126 611	9:87-18	Dec 99	51 96 076	51 96 076 Aug 99



D930A128

- 1 Extension cable
- 2 Socket and connecting cable
- 3 Expanding sleeve
- 4 Self-adhesive template
- 5 Screw 4.8x10, 1 pc.
- 6 Star washer, 1 pc.
- 7 Heater element
- 8 Lock clip
- 9 Heat protector
- 10 Cable tie, 5 pcs.

**Saab 9-3 Viggen:** Washer 51 92 281 ordered separately.

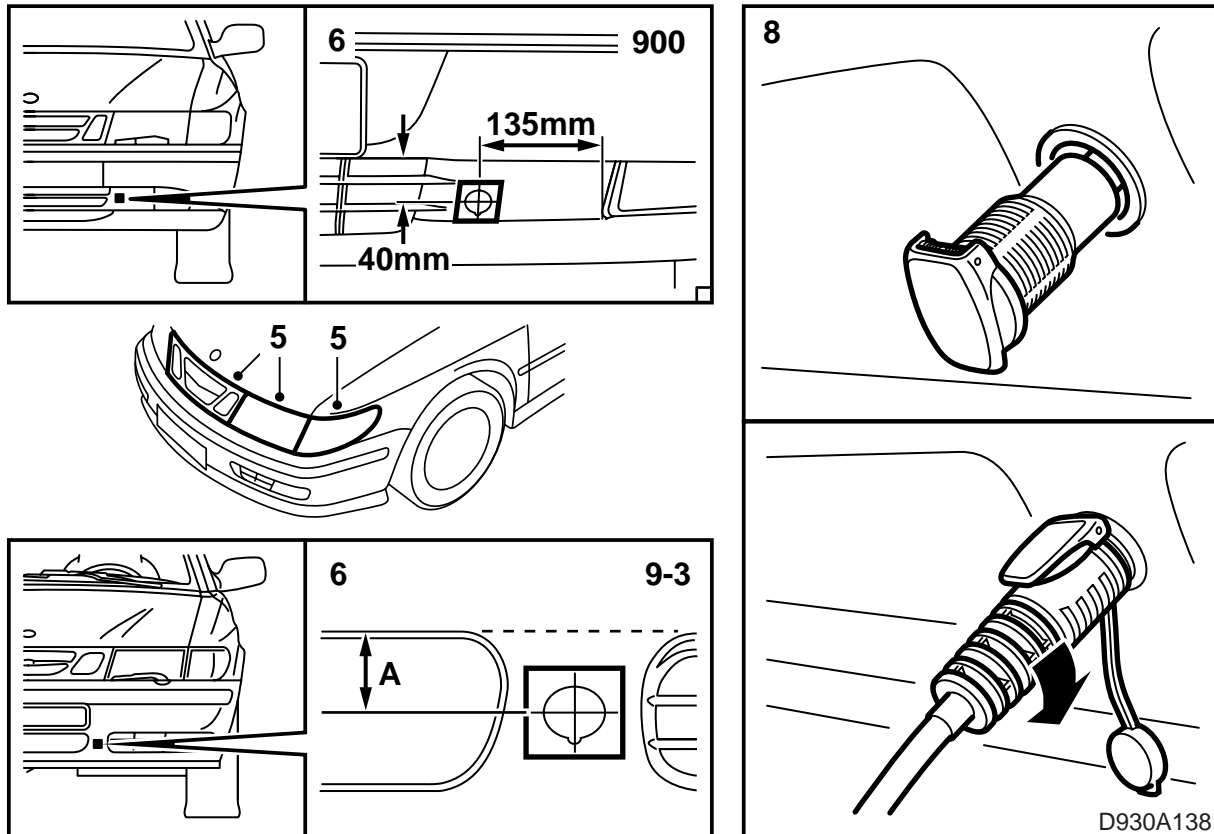


- 1 Read the installation instructions completely and make sure all the parts are present in the kit.
- 2 Cover the wings with protective covers and remove the cap on the cooling system expansion tank.

**! WARNING**

Be careful if the engine is warm, as the coolant may be hot. There is also a risk for burns on the exhaust manifold.

- 3 Raise the car. Take out a receptacle for the coolant. Open the drain plug, attach a hose and drain the coolant.



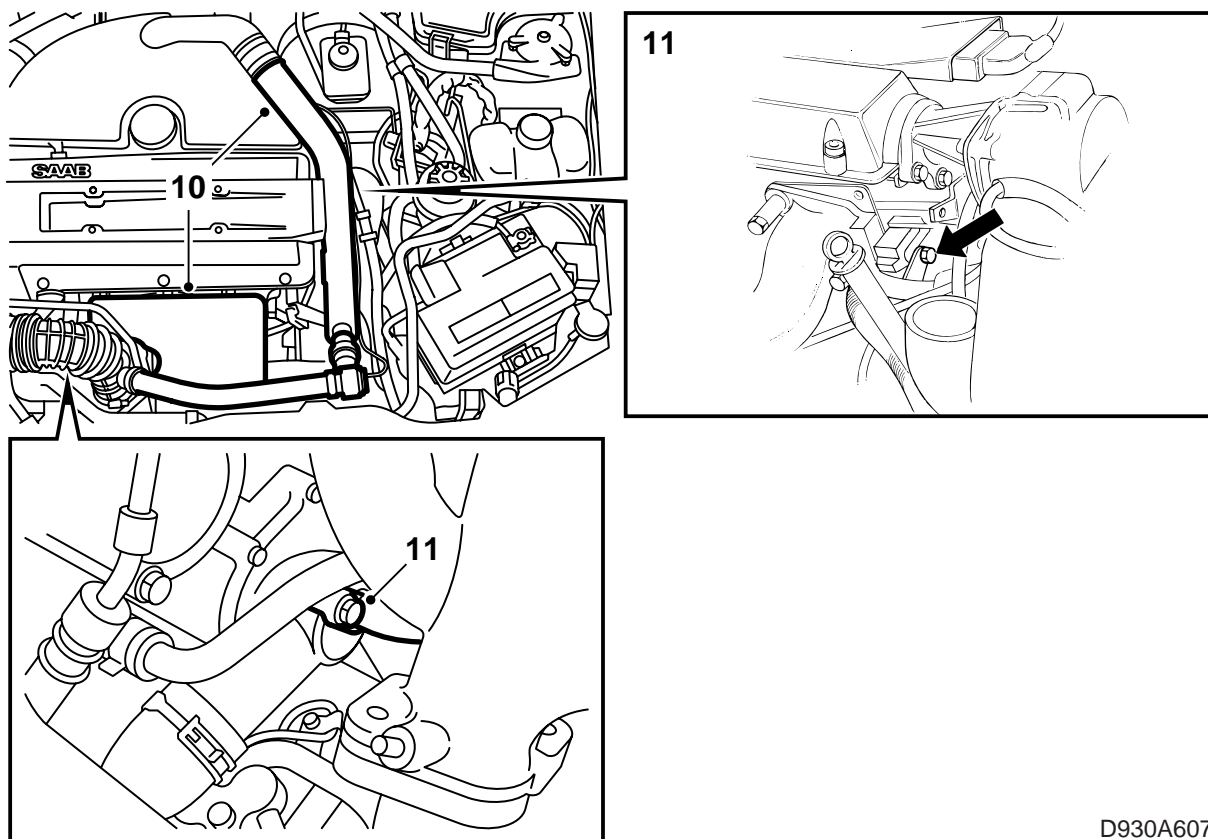
- 4 Lower the car to a suitable working height for fitting the socket on the bumper shell.
- 5 Remove the grille, the left-hand light cluster and the left-hand headlamp.
- 6 Mark out the position of the opening for the socket with the self-adhesive template. The vertical line must be midway between the two openings. Place a ruler or piece of tape above the openings in the bumper and measure out where to place the template, see illustration.

**All Saab 9-3 except Viggen:** A = 50 mm.

**Saab 9-3 Viggen:** A = 52 mm.

**Saab 900:** See dimensions in illustration.

- 7 Carefully make a hole with a **30 mm** hole saw. Remove any burrs around the hole and file a lock groove with a 4 mm round file.
- 8 **All cars except Saab 9-3 Viggen:** Insert the socket expander sleeve and fit the heater socket.  
**Saab 9-3 Viggen:** Insert the socket expander sleeve from the front and the reinforcing washer (ordered separately) from the back of the bumper. Fit the heater socket.  
**All cars:** Run the connecting cable in front of the radiator, making sure it does not fasten on the temperature sensor cable. Use the extension cable to pull the socket securely in place. Turn clockwise until the socket fits in place.
- 9 Raise the car and tighten the drain plug.



D930A607

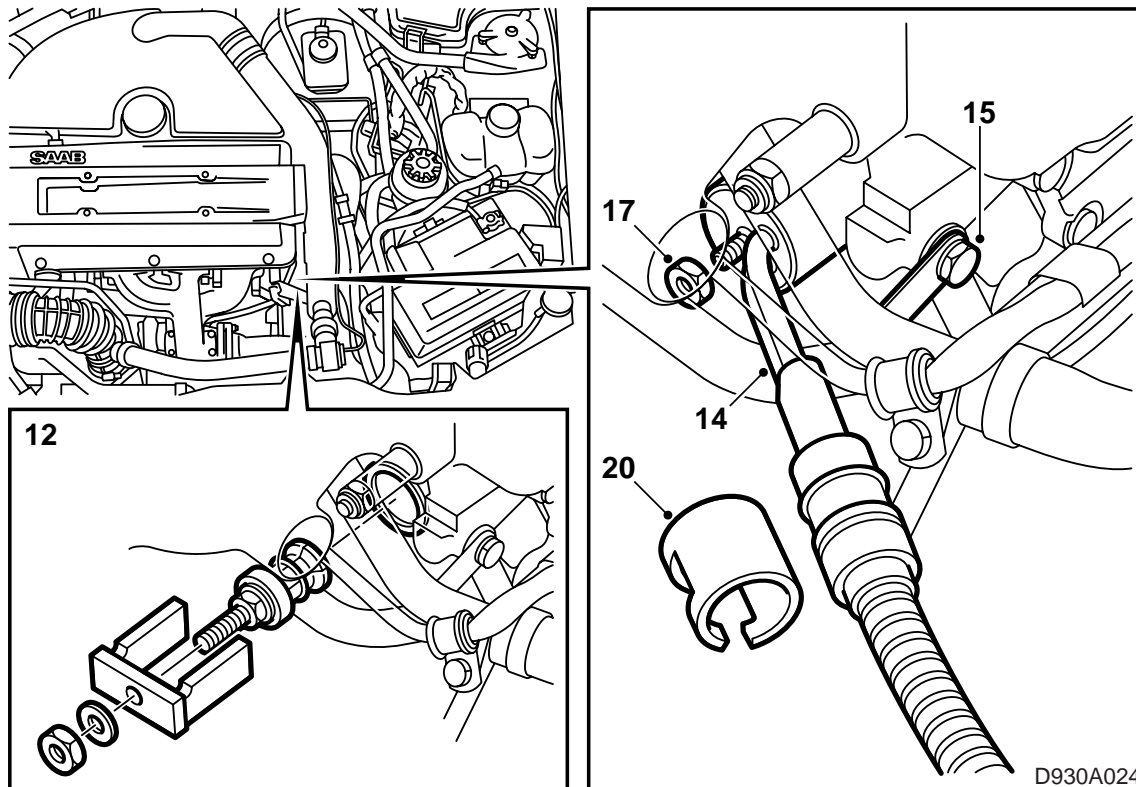
- 10 Lower the car. Remove the engine cover and the heat shield on top of the exhaust manifold.

**Turbo:** Remove the turbo pressure pipe between the charge air cooler and the throttle body as well as the bypass pipe.

**B205, B235:** Detach the hose from the turbo delivery pipe to the pressure sensor and unplug the connector to the intake air temperature sensor.

- 11 **B204, B234, B206:** Undo the pipe to the water pump by first removing the clamp on the oxygen sensor cable. Then, undo the pipes on the pump and the engine block.

**B205, B235:** Undo the pipe to the water pump by first removing the cable tie on the oxygen sensor cable. Then, undo the pipes on the pump and the engine block.

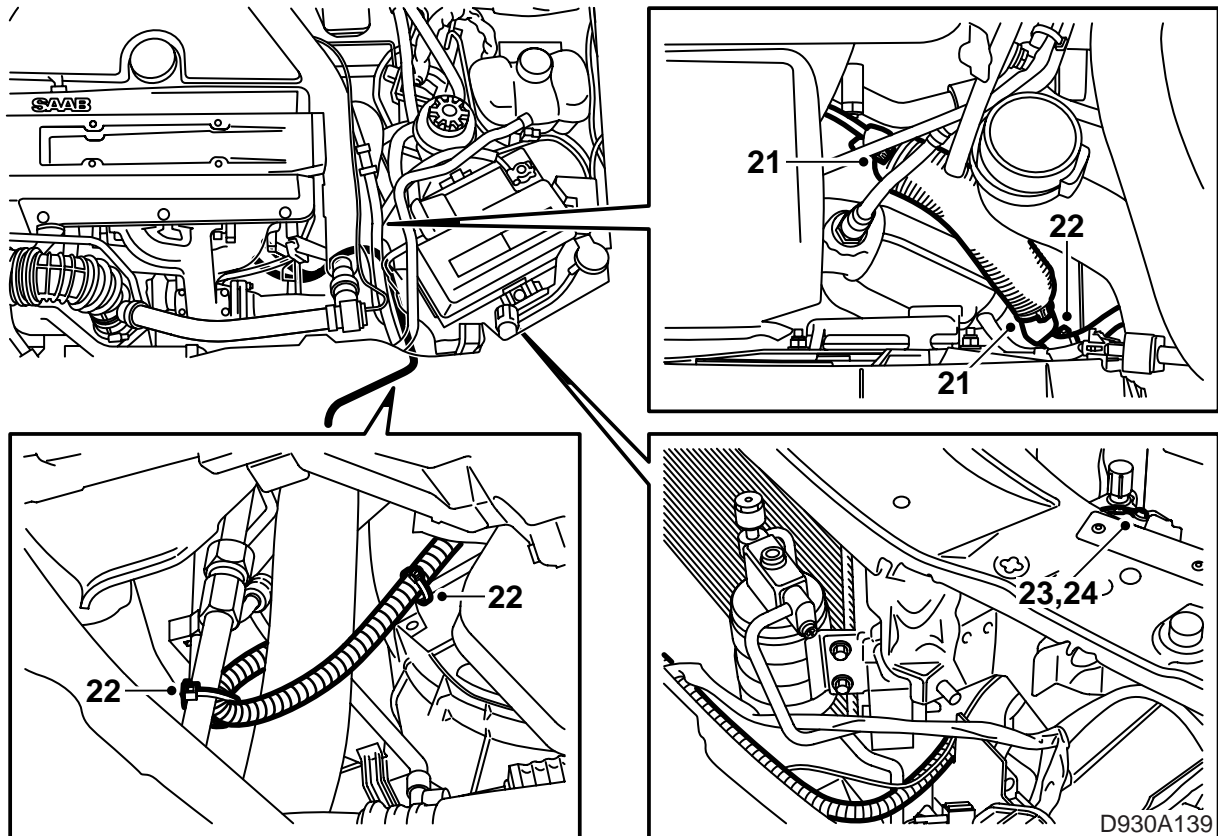


- 12 Remove the frost plug with tool 260 147 020.
- 13 Apply acid-free vaseline, part no. 30 06 665 or equivalent, to the O-ring on the heater element.
- 14 Insert the heater element so that the electrical connection is pointing slightly downwards and towards the left-hand side of the car. Do not tighten the nut securing the heater element.

### Note

Ensure that the heater element is placed between the water pipes and the pipes to the cylinder head after fitting.

- 15 Fit the pipes to the water pump and cylinder block. Inspect O-rings and replace as necessary.
- 16 **B204, B234, B206:** Fit the clamp to the oxygen sensor cable.  
**B205, B235:** Secure the oxygen sensor cables to the coolant pipe.
- 17 Adjust the position of the heater element so that it is free and tighten the nut.  
**Tightening torque: 3.5 Nm (2.5 lbf ft)**
- 18 Run the connecting cable as illustrated and thread on the heat protector.
- 19 Apply acid-free vaseline, part no. 30 15 286 or equivalent, to the O-ring on the connecting cable and connecting the cable to the heater element.
- 20 Fit the lock clip over the connection. A click should be heard when the lock clip is correctly fitted.



- 21 Secure the heat protection on top of the electrical connection and pinch the ends of the heat protection.

**⚠ WARNING**

Make sure the cable is not resting against sharp edges or hot surfaces. Pay attention to the turbo-charger where applicable. Chafing and melting can cause short circuits.

- 22 Secure the cable to the fan surround and power steering pipe with cable ties.
- 23 Drill a 3.5 mm hole in the plate behind the left-hand headlamp, see illustration.
- 24 Scrape off paint to give a good ground connection and screw on the ground lead with the 4.8x10 screw and star washer. Spray with light underseal, part no. 30 15 971 or equivalent.
- 25 Check the ground connection between the ground pin in the socket, the heater element housing and the car body.
- 26 Fit the heat shield and engine cover.
- Turbo:** Fit the turbo delivery pipe with by-pass pipe and the vacuum hose to the by-pass pipe.
- 27 Fit the headlamp, light cluster and grille.
- 28 Fill with coolant and check the integrity of the system.

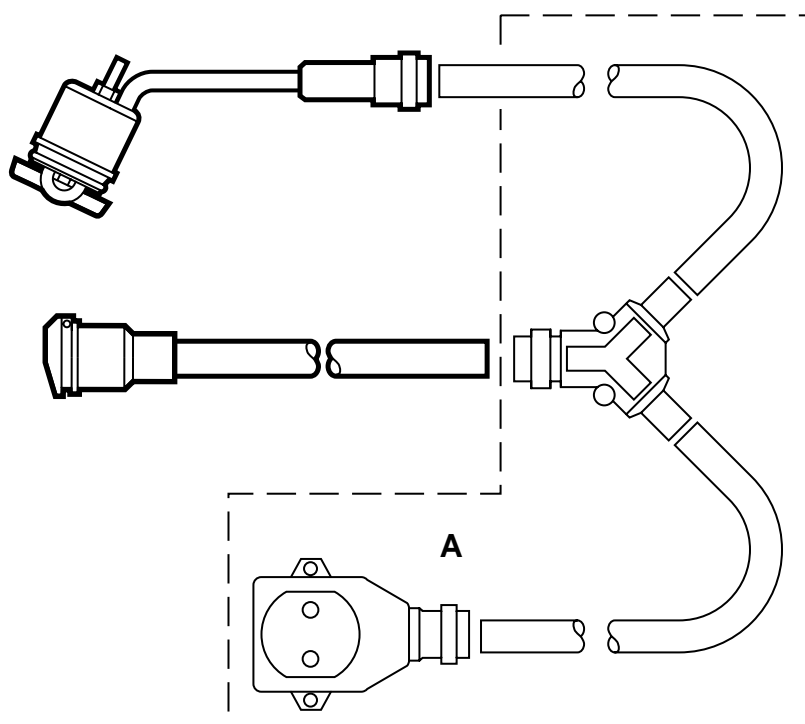
- 29 Bleed the system as follows:

**Note**

AC/ACC must be OFF.

Fill the system to MAX level. Close the cap on the expansion tank, start the engine and run it warm at varying engine speeds until the radiator fan starts. Carefully open the cap on the expansion tank and top up to MAX level. Close the cap. Turn off the engine and top up as necessary to MAX level.

- 30 Check the integrity of the system and the function of the heater.
- 31 Place the installation instructions in the car and inform the customer of the user instructions.



D930A026

A Branch wiring kit

### User instructions

- The extension lead must be a rubber cable, resistant to oil and approved for outdoor use with an area of at least 3x1.5 mm<sup>2</sup>.
- The parking heater must be connected to a grounded outlet only.
- Treat all cables with caution. Watch out for damage caused by jamming the cable between the hood (bonnet) and the car body, and for cuts caused by sharp metal objects.

**⚠ WARNING**

Check the ground connection between the ground pin in the socket, the heater element housing and the car body regularly.

- Inspect the extension lead regularly for damage and ageing. A damaged lead must be replaced immediately.

### Note

The function of the heater can be at risk if:

- the coolant is polluted
- the coolant level is too low or if there is air in the system
- ice sludge is present in the system
- radiator cement is used