



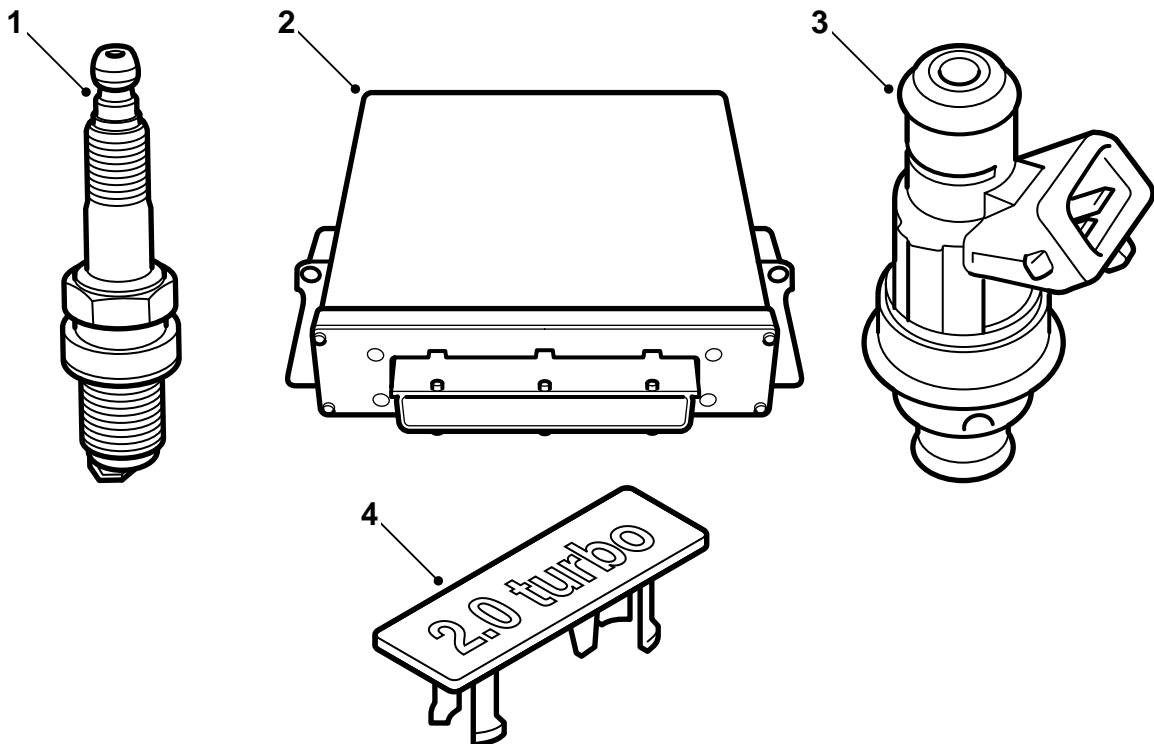
SAAB

**MONTERINGSANVISNING · INSTALLATION INSTRUCTIONS
MONTAGEANLEITUNG · INSTALLATIONS DE MONTAGE**

Saab 9-5 B205E

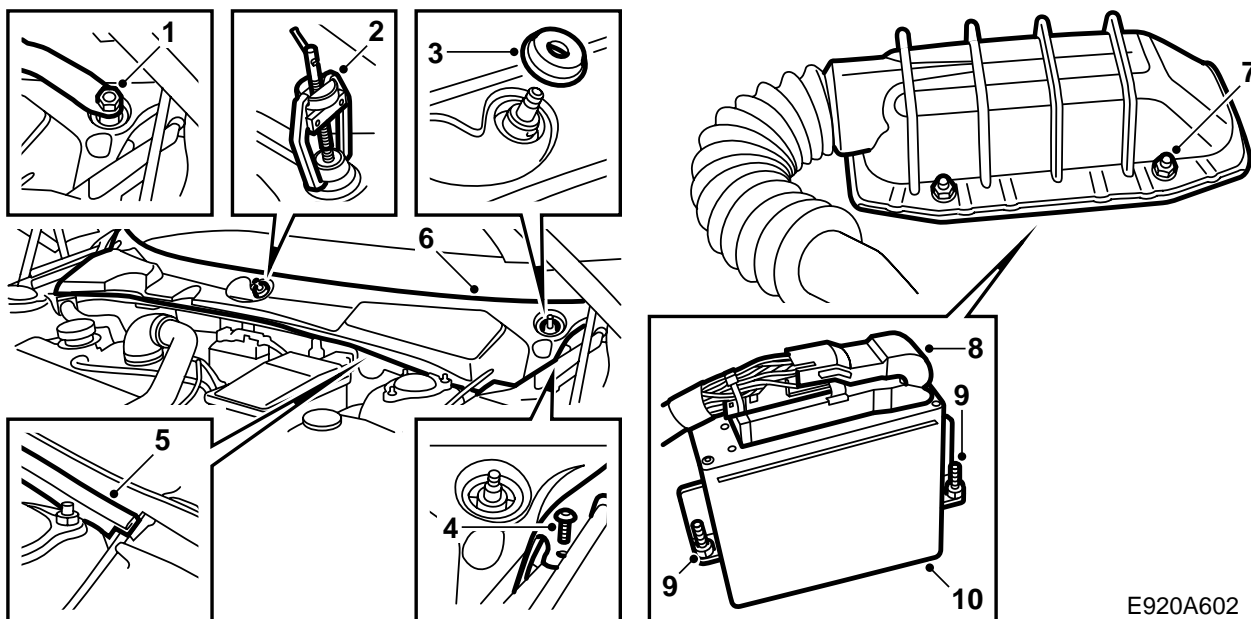
Tuning kit

Accessories Part No.	Group	Date	Instruction Part No.	Replaces
400 127 296	9:29-02	Jan 00	51 74 263	51 74 263 Jul 99



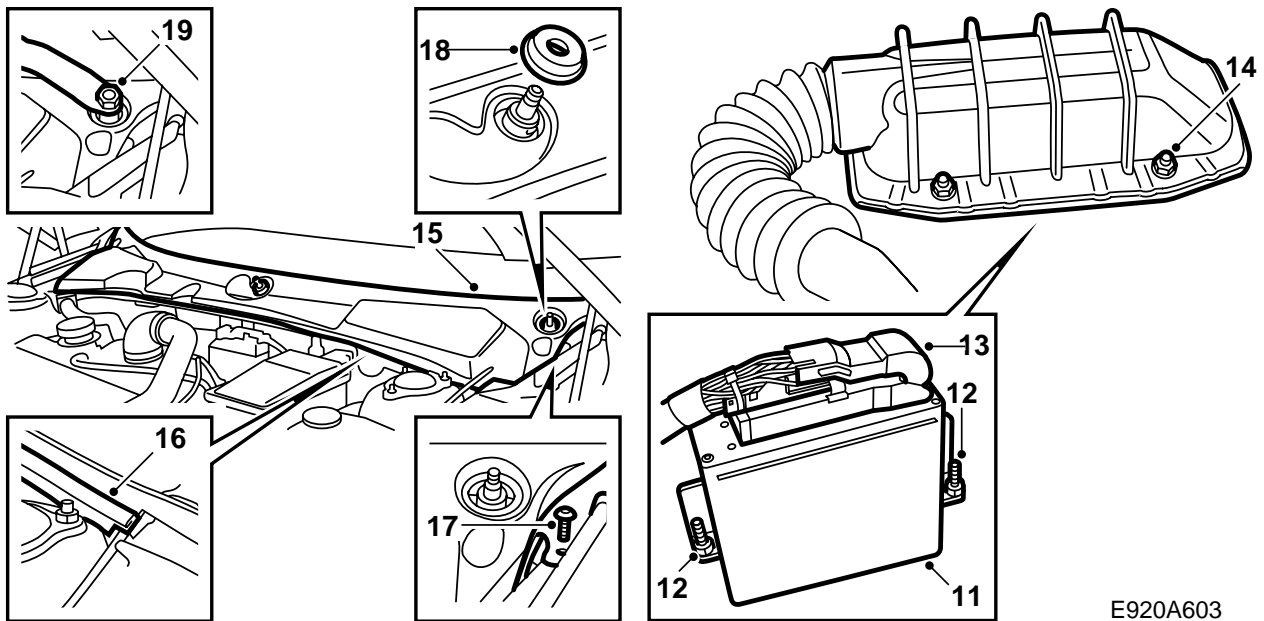
E920A011

- 1 Spark plugs (4 pcs.)
- 2 Control module
- 3 Injector (4 pcs.)
- 4 Emblem



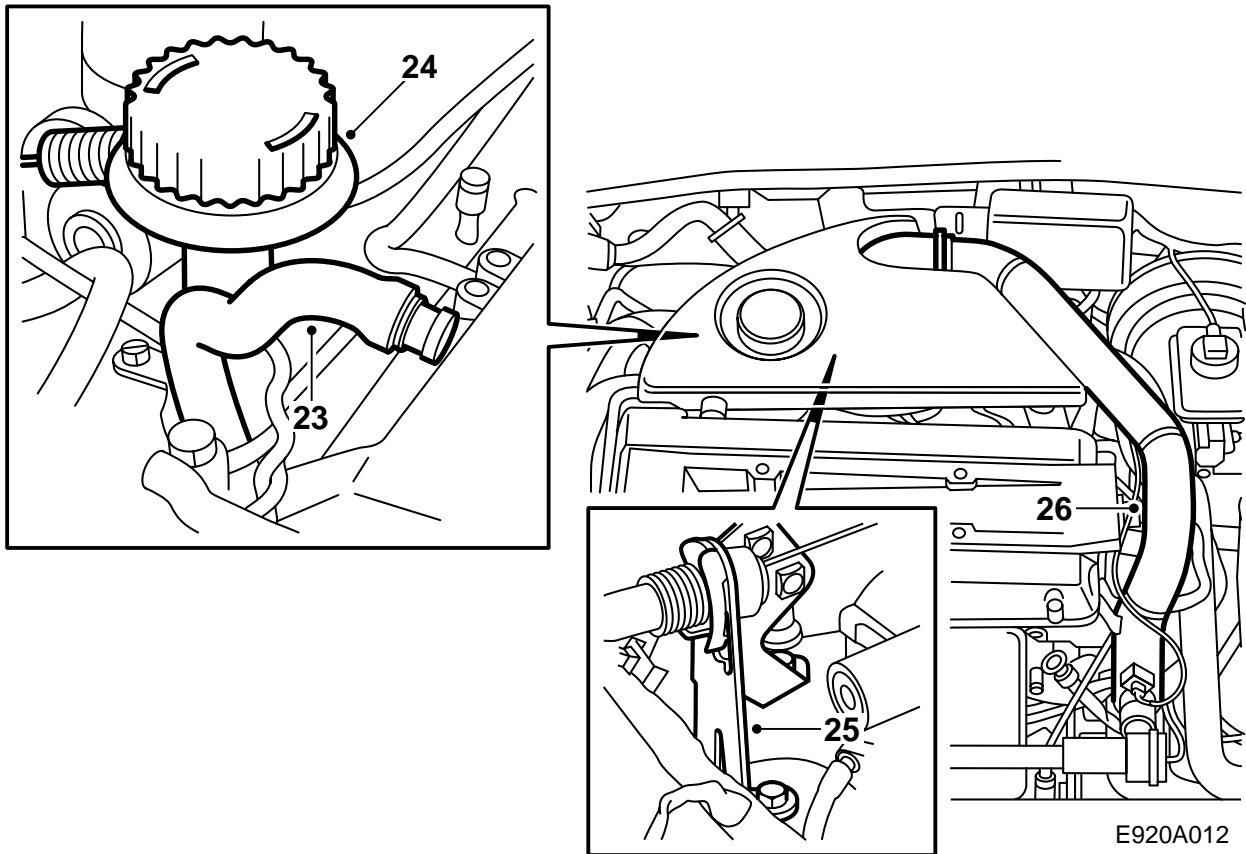
E920A602

- 1 Remove the covers over the nuts on the wiper spindles and loosen the nuts slightly.
- 2 Loosen the wiper arms with puller 85 80 144. Remove the nuts and wiper arms.
- 3 Remove the rubber wiper spindle seals.
- 4 Remove the two screw clips on the ends of the windscreen cover.
- 5 Loosen the rubber seal.
- 6 Remove the windscreen cover by gripping the front edge and lifting upwards/forwards. Pay attention to the hood (bonnet) release wire on the left-hand side.
- 7 Undo the 4 nuts securing the control module cover.
- 8 Tilt up the cover and unplug the control module connector by lifting up the catch on the right-hand side.
- 9 Undo the 2 control module retaining nuts. A 10 mm magnetic socket can be used.
- 10 Lift the control module straight up.



E920A603

- 11 Position the new control module.
- 12 Tighten the 2 control module retaining nuts.
- 13 Spray the control module multi-connector with Kontakt 61 (part no. 30 21 763), plug it in and secure it with the catch.
- 14 Fit the cover and tighten the 4 securing nuts.
- 15 Position the windscreen cover. Pay attention to the hood (bonnet) release wire on the left-hand side.
- 16 Fit the rubber seal.
- 17 Fit the two screw clips on the ends of the windscreen cover.
- 18 Refit the rubber wiper spindle seals.
- 19 Fit the wiper arms, adjust their parking position to the dot marks on the windscreen and tighten the nuts.
- 20 Refit the covers over the nuts on the wiper spindles.



E920A012

⚠ WARNING

Removing the fuel rail involves dismantling the car's fuel system. Therefore, the following points must be observed in connection with these measures:

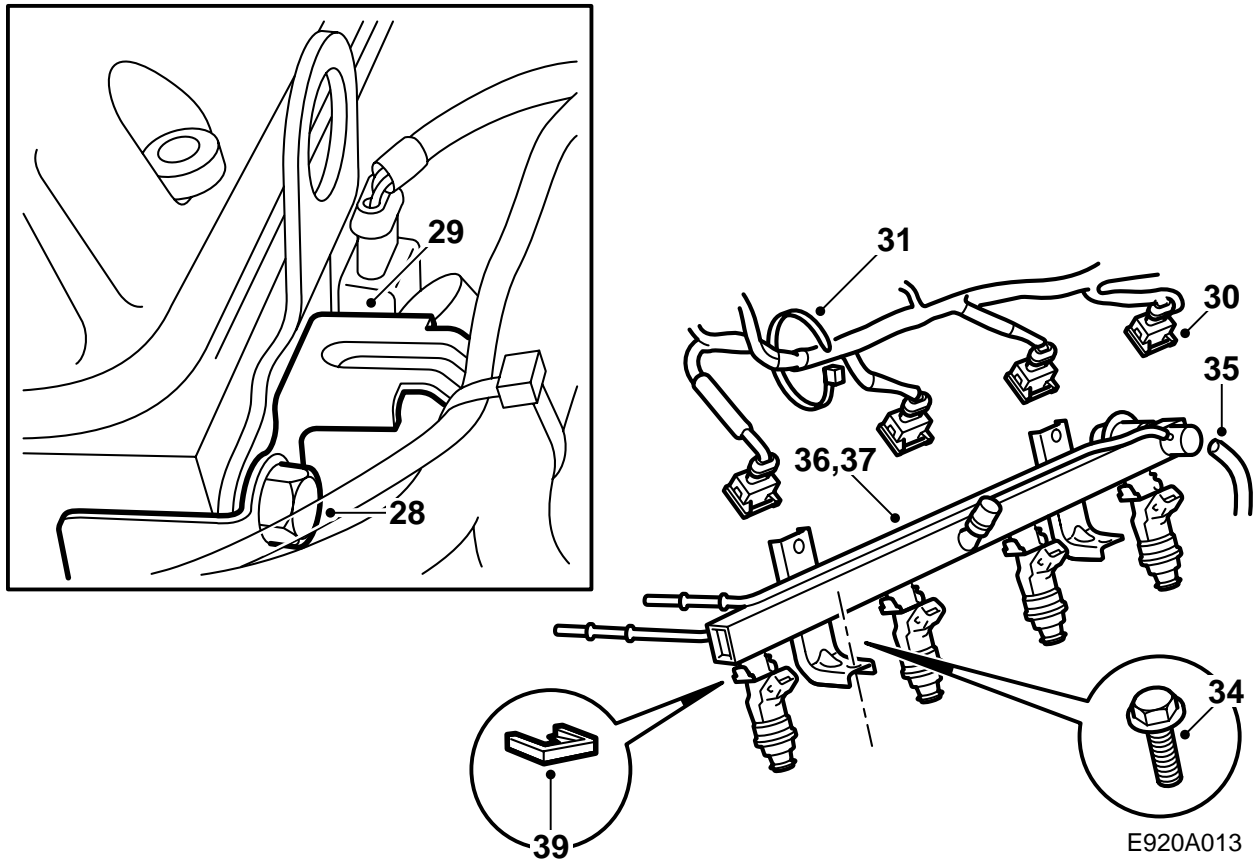
- Provide good ventilation! Use approved extractors for removing fuel fumes if they are available.
- Use protective gloves! Prolonged contact with fuel can cause skin irritation.
- Keep a class BE fire extinguisher close at hand! Observe the risk of sparks, e.g. in connection with breaking electrical circuits, short circuits, etc.
- Smoking is absolutely forbidden.
- Use protective goggles.

- 22 Remove fuel pump fuse no. 19 while the engine is running. Turn off the ignition once the engine has stopped.
- 23 Detach the hose for the crankcase ventilation.
- 24 Remove the oil dipstick with filler pipe end and plug the pipe.
- 25 Remove the cover over the throttle disc. Detach the accelerator cable from the throttle spindle. Remove the accelerator cable and holder and put to one side.
- 26 Loosen the turbo pressure pipe retaining screw on the cylinder head.
- 27 Remove the turbo pressure pipe.

Important

Utmost cleanliness must be observed when working with the fuel rail and injectors. Wash the injectors, fuel rail and intake manifold and blow clean with compressed air.

- 21 Remove the engine cover by undoing one snap fastener at a time, starting at the oil filler.



- 28 Loosen the upper and front screws on the cable holder and undo the rear screw completely.
- 29 Lift up the cable holder and fold it backwards.
- 30 Unplug the following connectors: ignition discharge module, injectors, absolute intake pressure sensor, mass air flow sensor and turbo pressure sensor.
- 31 Undo the cables and bend to one side. 2 clips on the rail and 6 on the crankcase ventilation pipe.
- 32 Separate the fuel lines.

⚠ WARNING

There will be fuel left in the fuel lines.

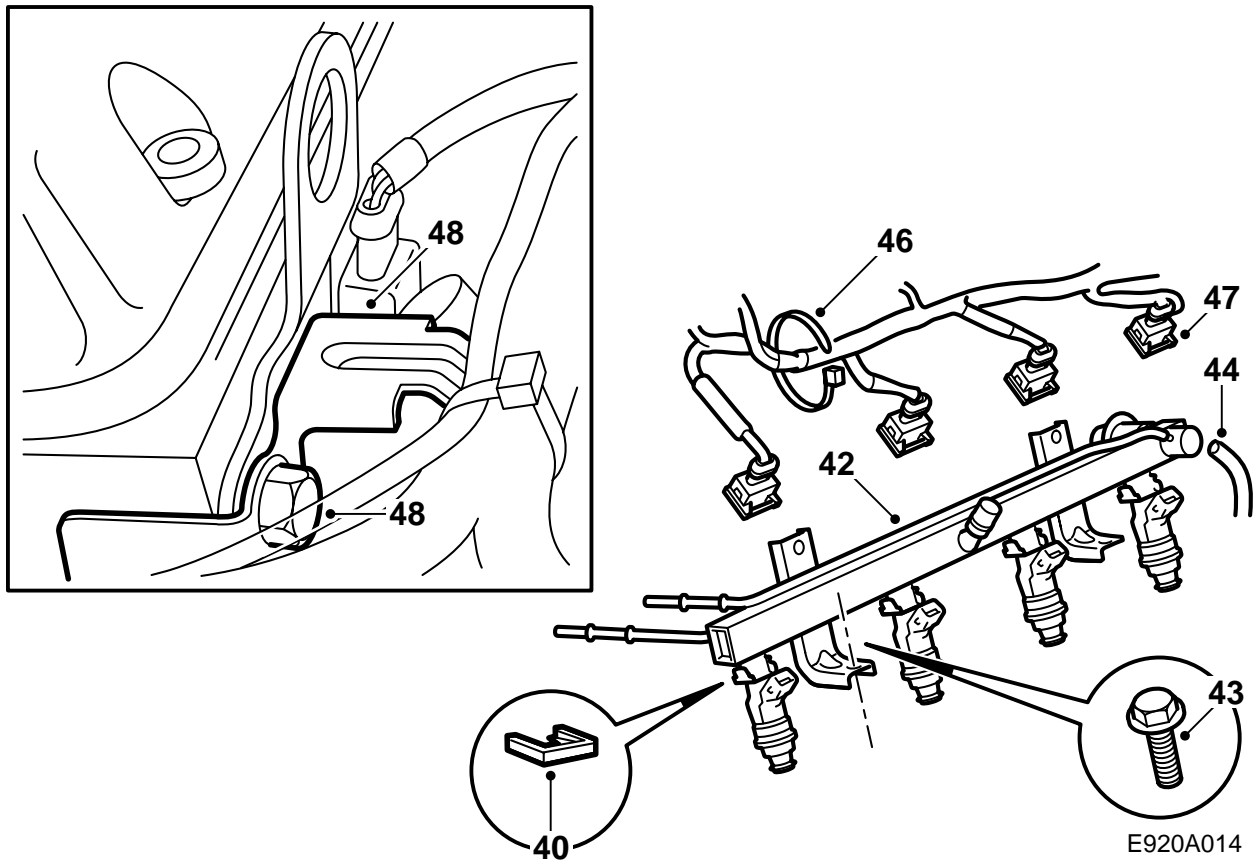
Use separating tool 83 95 261.

- 33 Blow clean around the injectors with compressed air.
- 34 Undo the 2 fuel rail retaining screws.
- 35 Detach the pressure regulator vacuum hose.
- 36 Carefully prise off the fuel rail using 2 crowbars or similar.
- 37 Carefully lift up the fuel rail and move it away.
- 38 Plug the nozzle holes in the cylinder head.
- 39 Pull loose the injector fastening clips.

⚠ WARNING

There is fuel left in the fuel rail.

Remove the injectors.



40 Fit the new injectors.

Important

Lubricate the injector O-rings with acid-free petroleum jelly before fitting and ensure that the injectors are pressed home so that they bottom in the fuel rail.

Press home the injector fastening clips.

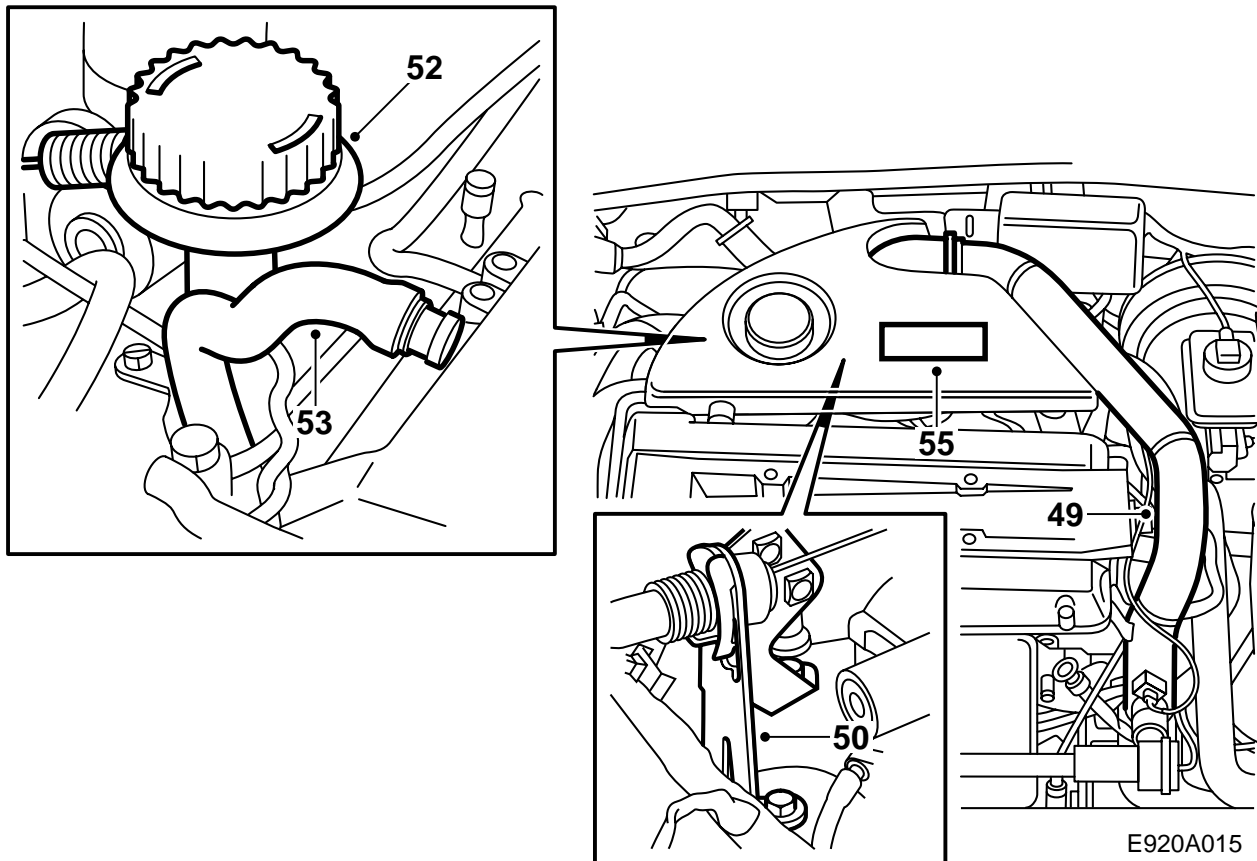
- 41 Remove the plugs from the nozzle holes in the cylinder head.
- 42 Carefully position the fuel rail.
- 43 Tighten the 2 fuel rail retaining screws.
- 44 Attach the pressure regulator vacuum hose.
- 45 Connect the fuel lines.
- 46 Lay the cables and secure with 2 clips on the fuel rail and 6 clips on the crankcase ventilation pipe.
- 47 Connect the injectors, absolute intake pressure sensor, mass air flow sensor and turbo pressure sensor.

Important

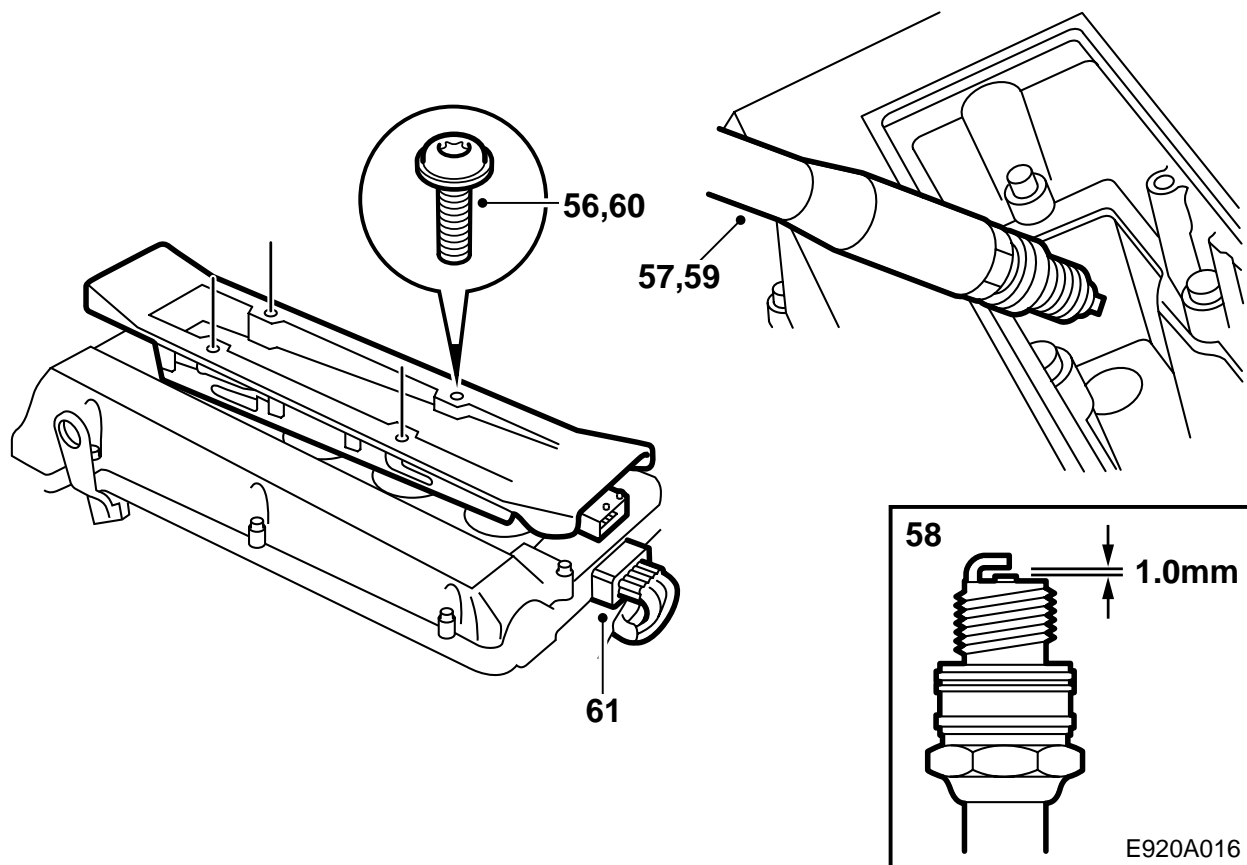
Spray all connectors with Kontakt 61, part no. 30 04 520, before fitting.

Make sure that each connector is plugged to the correct injector. the cables are marked.

- 48 Position the cable holder and tighten the retaining screws.



- 49 Fit the turbo pressure pipe.
- 50 Position the accelerator cable with holder and fit the accelerator cable to the throttle spindle. Fit the cover over throttle disc.
- 51 Adjust the accelerator cable.
- 52 Fit the oil dipstick and filler pipe end.
- 53 Attach the hose for the crankcase ventilation.
- 54 Replace fuel pump fuse no. 19.
- 55 Remove the emblem from the engine cover and fit the new one. Refit the cover.



56 Remove the 4 ignition discharge module retaining screws.

57 Remove the spark plugs.

58 Check the new spark plug gaps. They should be 1.0-1.1 mm.

59 Apply Molykote 1000 (part no. 30 20 271) or equivalent to the threads on the new spark plugs and fit them the plugs.

Tightening torque 27 Nm (20 lbf ft).

60 Lubricate the rubber seals on the ignition discharge module spark plug connections with Krytox (part no. 30 19 312) and fit the module.

Tightening torque 11 Nm (8 lbf ft).

61 Plug in the ignition discharge module connector.

62 Program the control module to the TWICE control module and main instrument unit by connecting the diagnostic tool, select TWICE and the "Immobilizer" menu and then select "Programming".

Important

There may be trouble codes present in the engine management system after programming. Clear them.

63 Cut out the text concerning spark plugs along the marks and affix it to page 2 in the service book. If there is already text on page 2, affix it to page 3.

Important

The service interval for changing spark plugs is changed to 20 000 km.

64 Hand over the installation instructions to the customer together with "TUNING KIT CERTIFICATE FOR SAAB 9-5".