

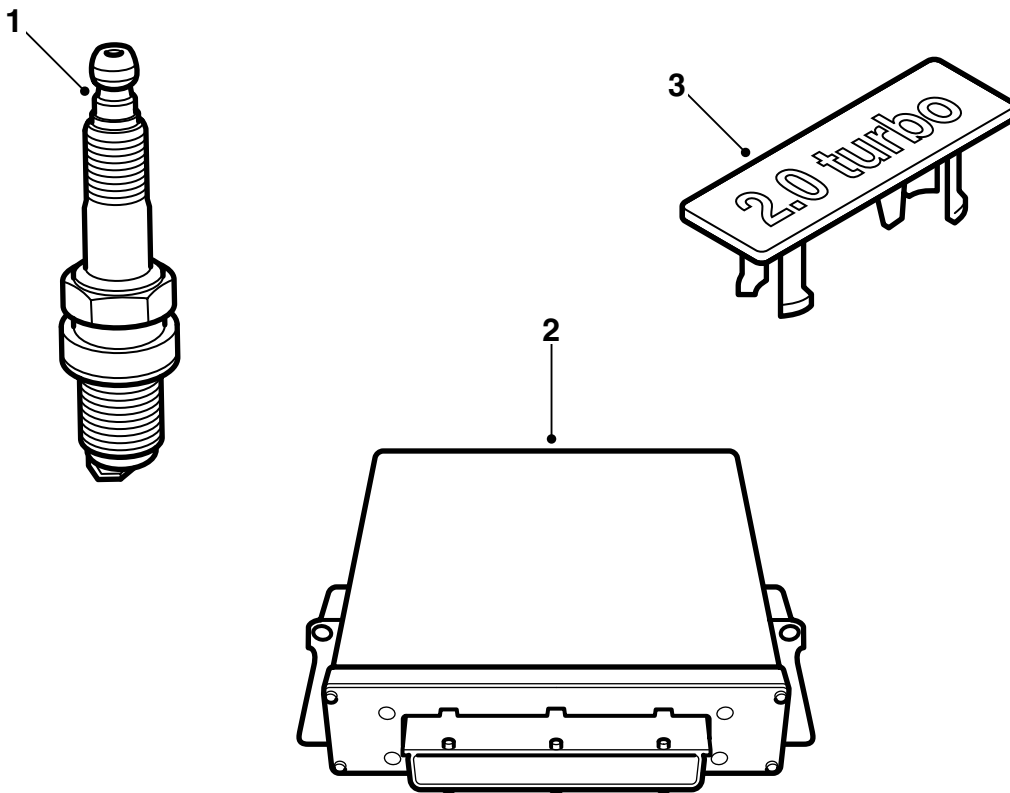


MONTERINGSANVISNING · INSTALLATION INSTRUCTIONS  
MONTAGEANLEITUNG · INSTRUCTIONS DE MONTAGE

## Saab 9-5 B205E M01

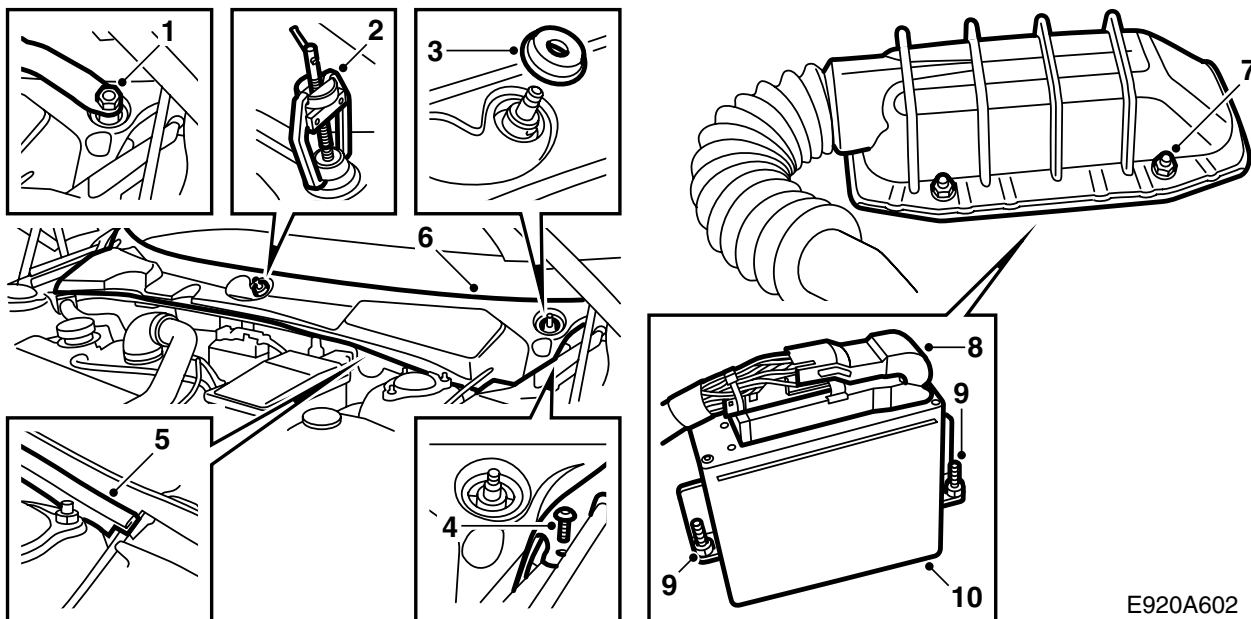
Tuning kit

Accessories Part No.	Group	Date	Instruction Part No.	Replaces
400 129 227 400 129 235	9:29-03	Jul 02	53 80 886	53 80 886 Jun 00



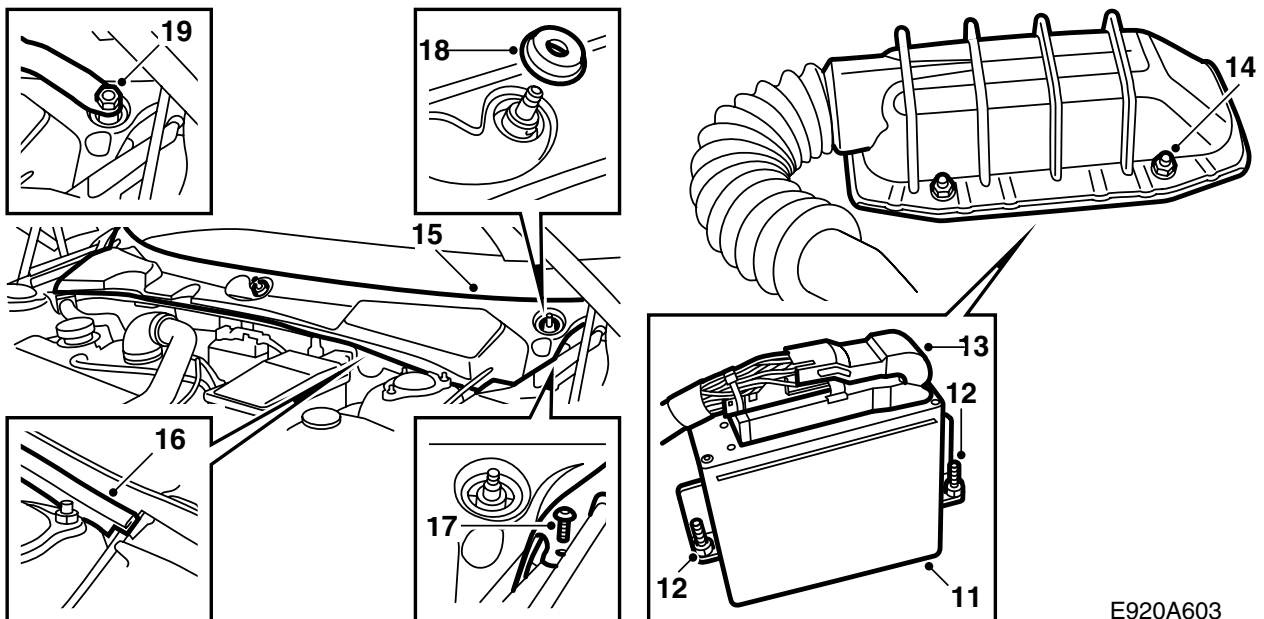
E920A017

- 1 Spark plugs (4)
- 2 Control module
- 3 Emblem



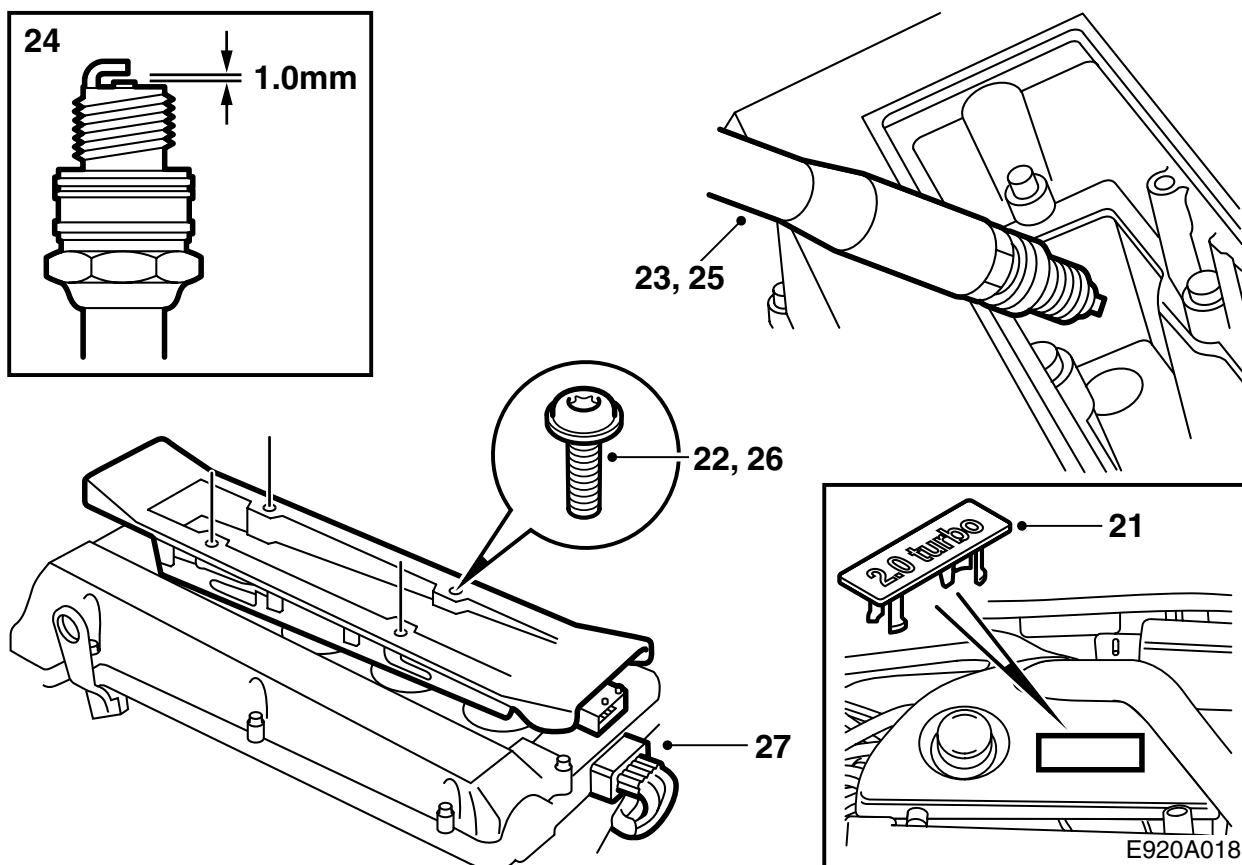
E920A602

- 1 Remove the covers over the nuts on the wiper spindles and loosen the nuts slightly.
- 2 Loosen the wiper arms with puller 85 80 144. Remove the nuts and wiper arms.
- 3 Remove the rubber wiper spindle seals.
- 4 Remove the two screw clips on the ends of the windscreen cover.
- 5 Loosen the rubber seal.
- 6 Remove the windscreen cover by gripping the front edge and lifting upwards/forwards. Pay attention to the hood (bonnet) release wire on the left-hand side.
- 7 Undo the 4 nuts securing the control module cover.
- 8 Tilt up the cover and unplug the control module connector by lifting up the catch on the right-hand side.
- 9 Undo the 2 control module retaining nuts. A 10 mm magnetic socket can be used.
- 10 Lift the control module straight up.



E920A603

- 11 Position the new control module.
- 12 Tighten the 2 control module retaining nuts.
- 13 Spary the control module multi-connector with Kontakt 61 (part no. 30 21 763), plug it in and secure it with the catch.
- 14 Fit the cover and tighten the 4 securing nuts.
- 15 Position the windscreen cover. Pay attention to the hood (bonnet) release wire on the left-hand side.
- 16 Fit the rubber seal.
- 17 Fit the two screw clips on the ends of the windscreen cover.
- 18 Refit the rubber wiper spindle seals.
- 19 Fit the wiper arms, adjust their resting position to the dot marks on the windscreen and tighten the nuts.
- 20 Refit the covers over the nuts on the wiper spindles.



- 21 Remove the engine cover and the emblem from the cover. Fit the new emblem and refit the cover.
- 22 Remove the ignition discharge module connector and the 4 retaining screws.
- 23 Remove the ignition discharge module and the spark plugs.
- 24 Check the new spark plug gaps. They should be 1.0-1.1 mm.
- 25 Apply Molykote 1000 (part no. 30 20 271) or the equivalent to the new spark plug threads and fit the spark plugs.

**Tightening torque 27 Nm (20 lbf ft).**

- 26 Lubricate the rubber seals on the ignition discharge module spark plug connections with Krytox (part no. 30 19 312) and fit the module.

**Tightening torque 11 Nm (8 lbf ft).**

- 27 Plug in the ignition discharge module connector.
- 28 Program the control module with the TWICE control module and main instrument unit by connecting the diagnostic tool. Select TWICE and the "Immobilizer" menu and then select "Programming".

### Important

There may be diagnostic trouble codes present in the engine management system after programming. Clear them.

- 29 **Sweden:** Fill in the certificate included with the installation instructions and present it to the customer.

### Important

A new registration test must be carried out on the car due to increased engine output.

The certificate must be presented at the registration test.

- 30 Hand over the installation instructions to the customer and "TUNING KIT CERTIFICATE FOR SAAB 9-5".