

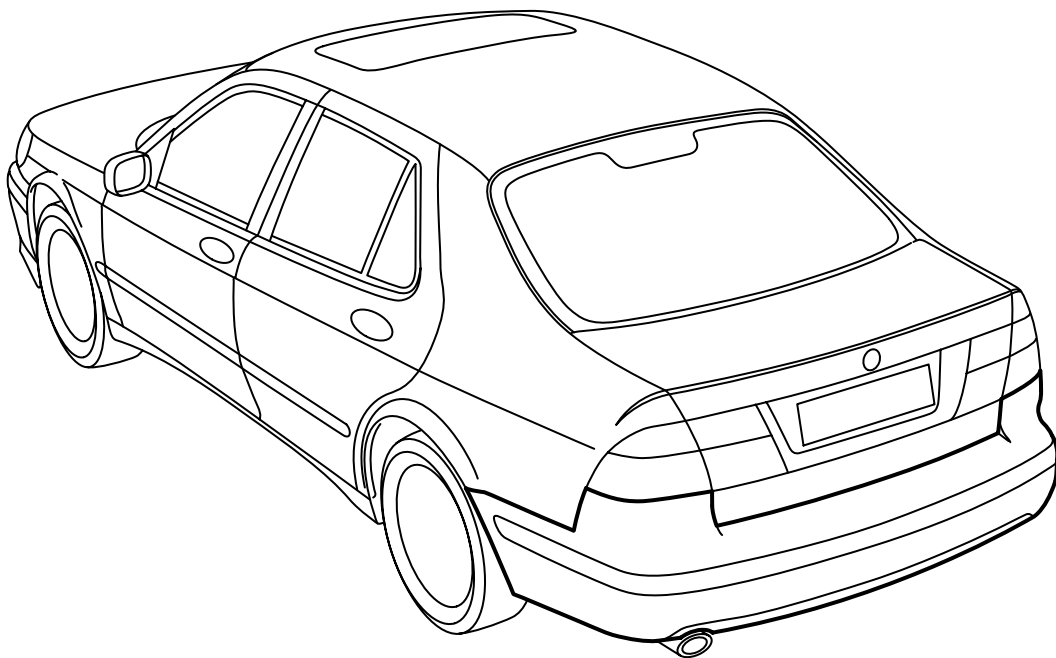


**MONTERINGSANVISNING · INSTALLATION INSTRUCTIONS
MONTAGEANLEITUNG · INSTRUCTIONS DE MONTAGE**

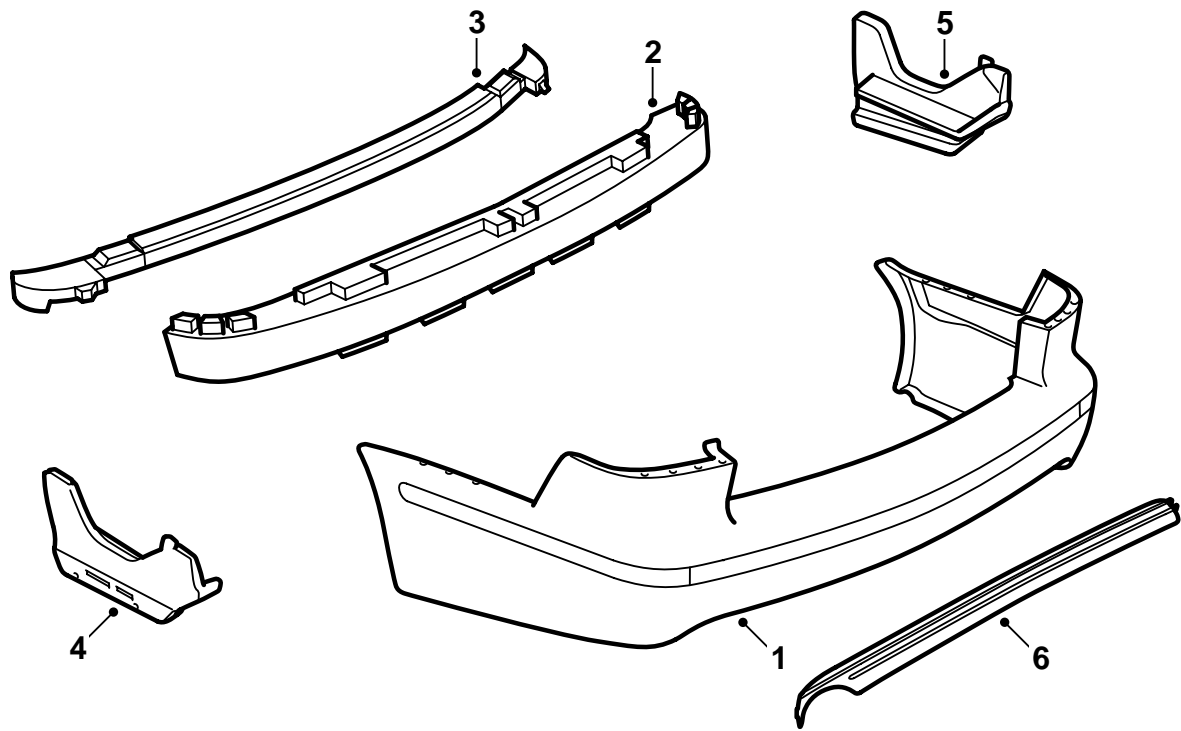
Saab 9-5 4D M02-

Rear bumper

Accessories Part No.	Group	Date	Instruction Part No.	Replaces
400 133 252	9:84-28	Aug 03	55 81 863	55 81 863 May 03

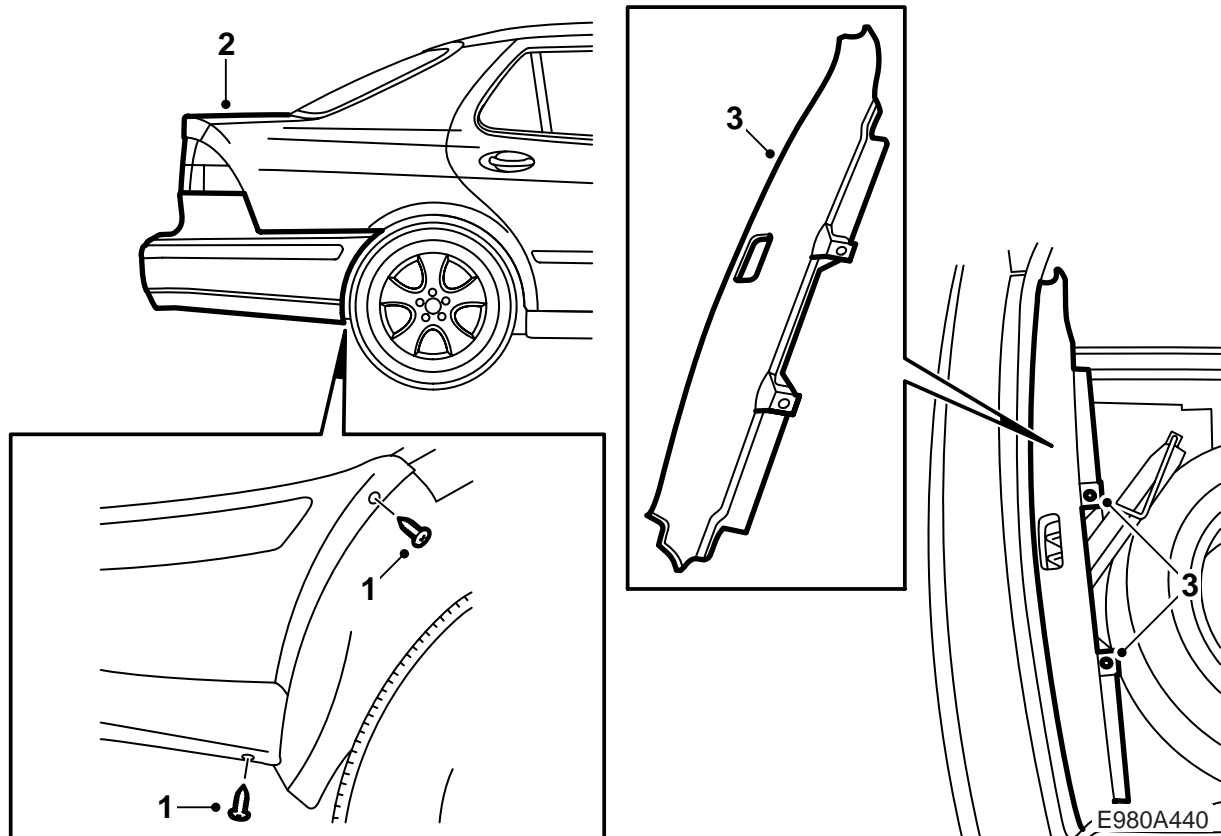


E980A438



E980A439

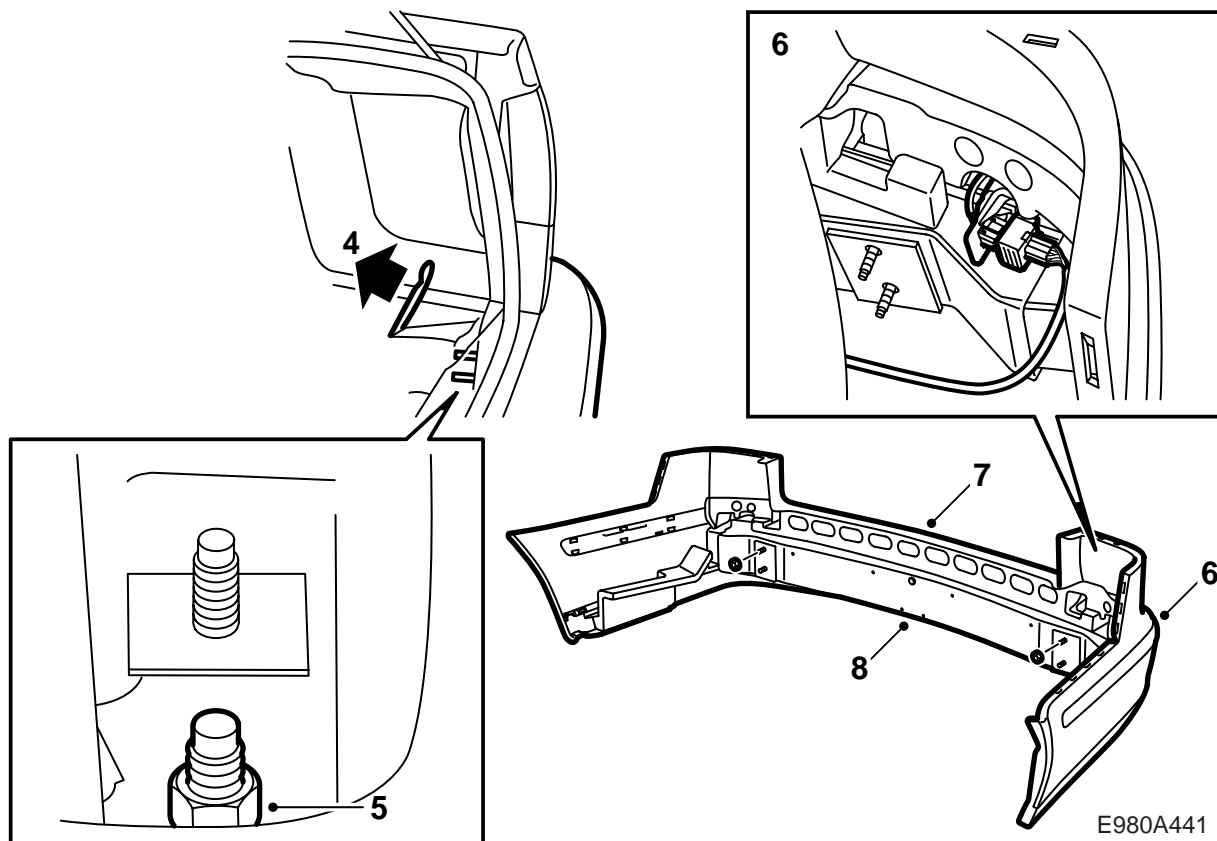
- 1 Bumper shell (ordered separately)
- 2 Cellular block, bumper member
- 3 Cellular block, upper
- 4 Cellular block, L
- 5 Cellular block, R
- 6 Grille decor strip



The bumper shell has been treated with grey primer in preparation for painting.

Paint the bumper shell in the colour of the body, see "Directions for painting preprimed PP/EPDM plastic" in these installation instructions.

- 1 Unscrew the screws in the wheel housing, 2 on each side.
- 2 Open the trunk (boot) lid.
- 3 Remove the scuff plate.



E980A441

- 4 Fold away the luggage compartment carpet and remove the seals.

Cars with towbar:

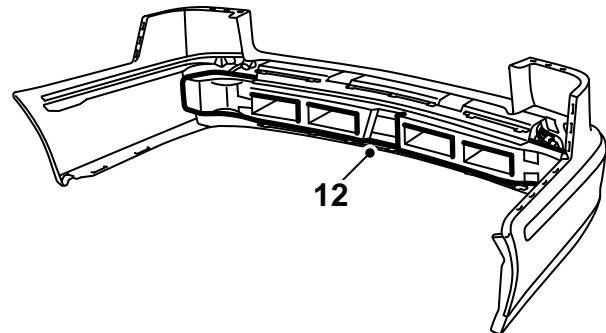
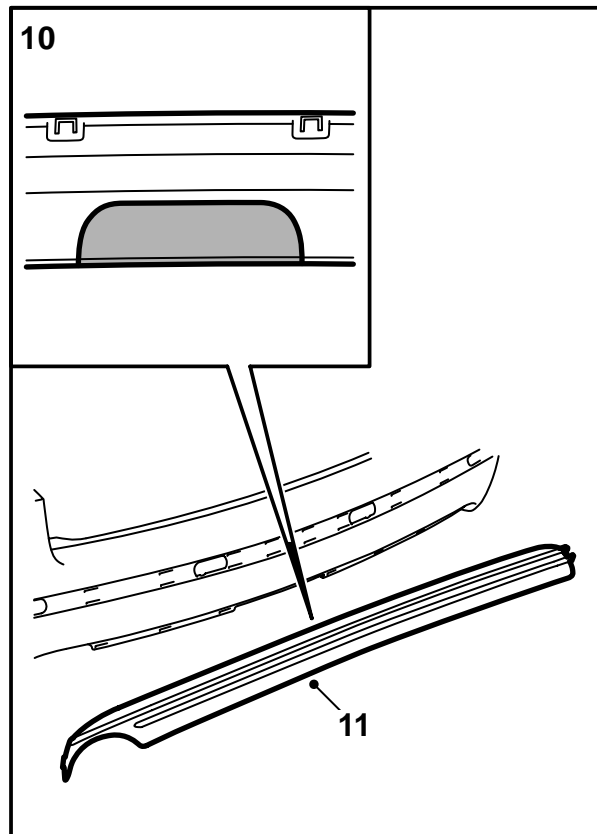
- Undo the corner sections of the bumper strip and remove the centre section.
 - Remove the bolts and nuts that hold the reinforcements to the body.
 - Remove the towbar mountings to the floor of the car.
 - Remove the towbar's electrical connector from the towbar.
- 5 Remove the nuts that hold the bumper. The lower bolts only have nuts if the car is equipped with towbar.
- 6 Pull out the bumper from the wheel housing edges and the rear fender (wing). Lift the bumper out backwards.

SPA: Unplug the connectors.

Important

Work carefully during removal so that paint damage is avoided.

- 7 Remove the upper cellular block.
- 8 Remove the bumper rail.
- 9 **SPA:** Remove the cellular block from the bumper shell, the wiring harness and the holder for the connector.



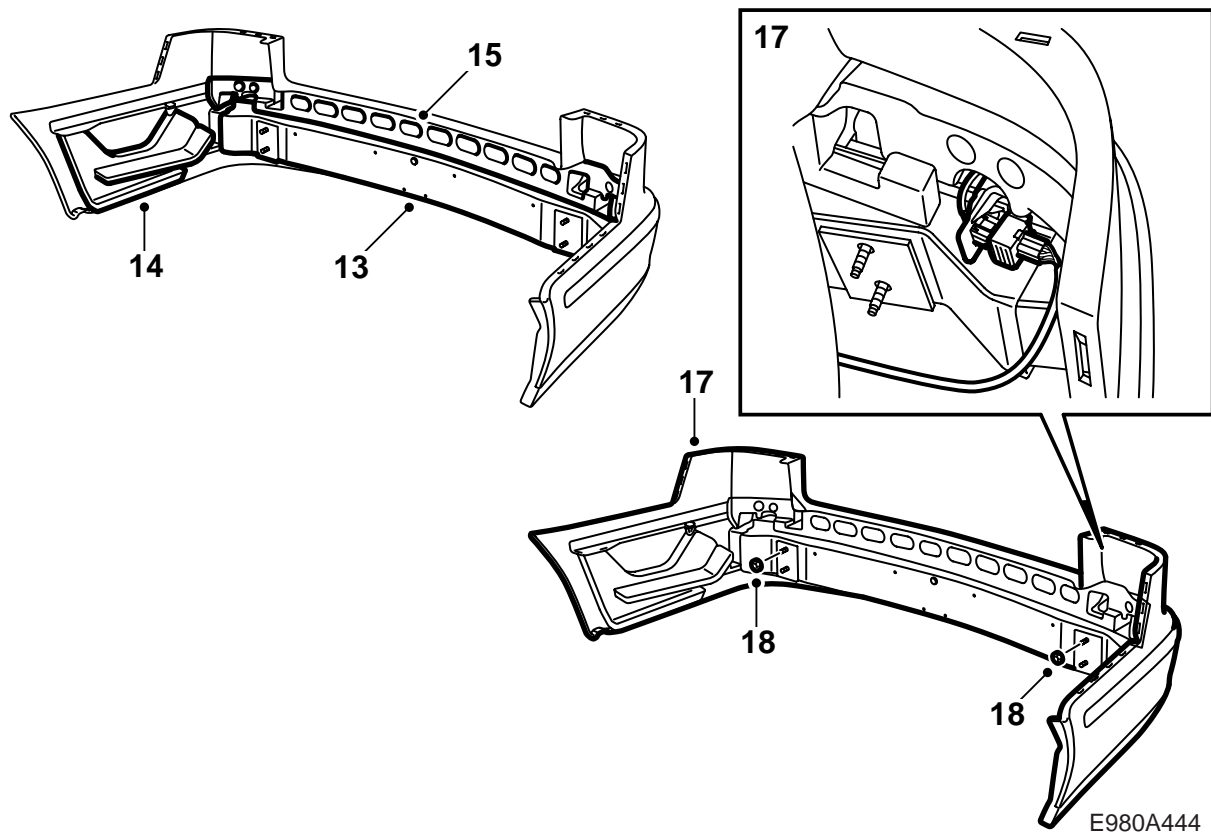
E980A443

- 10 **Cars with towbar:** Using a universal knife with hook shaped blade, cut out the marked area for the towbar in the bumper grille decor strip (a jig saw can also be used).

Important

Cut or saw as exact as possible. The appearance is very important. Adjust with a file if necessary.

- 11 Fit the grille decor strip in the bumper.
SPA: Fit the wiring harness.
- 12 Press the cellular block into the bumper shell mounting wedges.



E980A444

13 Fit the bumper rail.

Note

The rail must be guided into place using the guide pin in the protective shell.

14 Fit the cellular block on the sides of the bumper shell.

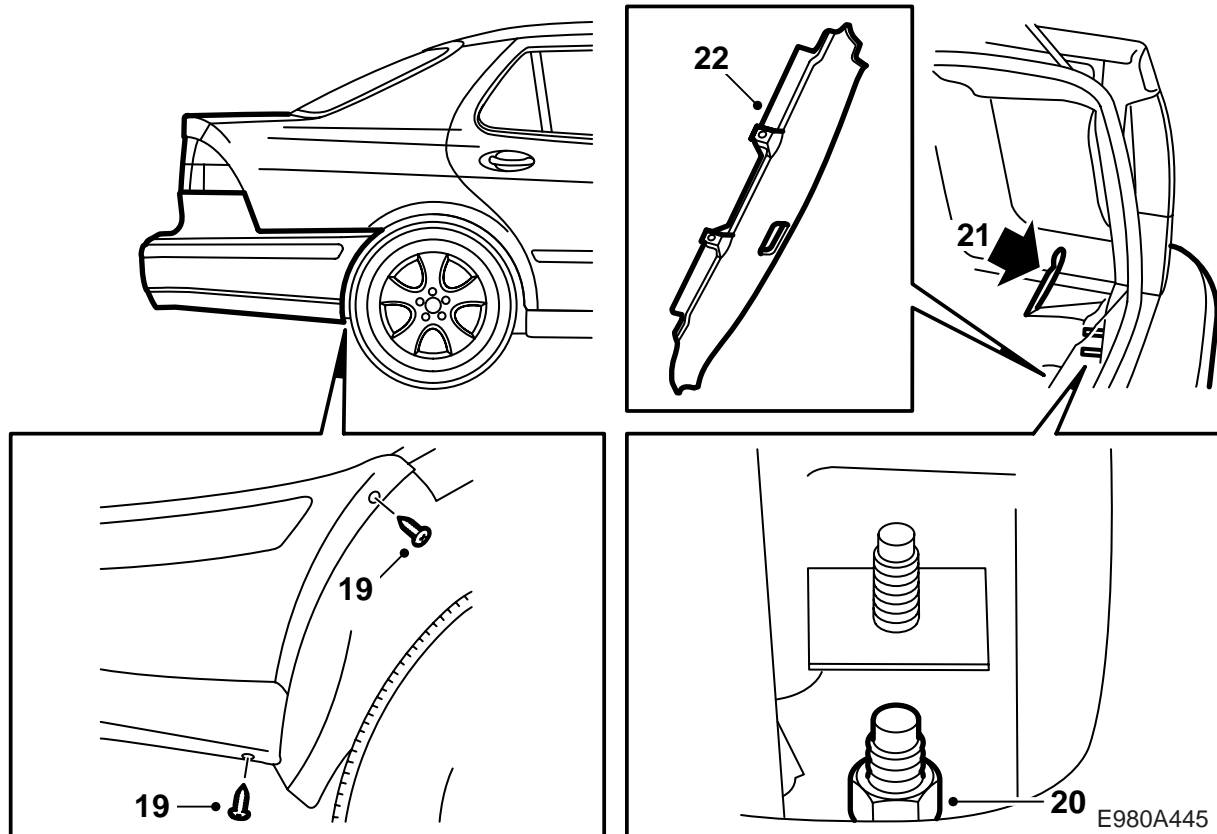
15 Fit the upper cellular block.

16 **SPA:** Fit the holder for the connector.

17 Position the bumper.

SPA: Connect the connectors.

18 Press the bumper over the edge of the wheel housing and rear fender (wing), make sure that the clips locate correctly, and fit the nuts.



19 Centre the bumper against the trunk (boot) opening and tighten the screws in the edge of the wheel housing. Check the fit and adjust if necessary.

20 Fit the nuts that hold the bumper.

Tightening torque 40 Nm (30 lbf ft)

Cars with towbar:

- Fit the towbar's electrical connector to the towbar.
- Fit the towbar mountings to the floor of the car.

Tightening torque 40 Nm (30 lbf ft)

- Fit the bolts and nuts that hold the reinforcements to the body.

Tightening torque 40 Nm (30 lbf ft)

- Fit the centre section of the bumper shell decor strip and fit the corner sections.

21 Fit the seals and fold down the luggage compartment carpet.

22 Fit the scuff plate.

23 Close the trunk (boot) lid.

Directions for painting preprimed PP/ EPDM plastic

- Place the sill covers in such a way as they will not be distorted while painting.
- The temperature must not exceed +40 °C (104 °F).
- The sill covers are primed on delivery.
- Use clean gloves when handling the sill covers.

Drying time

70 minutes at 40 °C (104 °F).

Preparations

- Rub down the primed surfaces thoroughly. Use 3M 1200 or 800 abrasive paper.