

E980A464

- 1 Towing bracket
- 2 Reinforcement (x2) 4D (only in kit 32 025 641, 32 025 642, 400 133 617, 400 133 658)
- 3 Reinforcement (x2) 5D (only in kit 400 133 583, 400 133 641)
- 4 Protective cover
- 5 Storage bag
- 6 Rubber plug
- 7 Seal (x2)
- 8 Bolt, taptite (x4)
- 9 Bolt M10X30 (x7)
- 10 Bolt M10x60 (x2)
- 11 Nut M10 (x2)
- 12 Sleeve (x2) 4D (only in kit 32 025 641, 32 025 642, 400 133 617, 400 133 658)
- 13 Nut plate (x2)
- 14 Washer (x2)
- 15 Press nuts (x2)
- 16 Key (x2)
- 17 Ball guard
- 18 Protective collar

32 025 641 applies to cars **without level control**, 4D.

32 025 642 applies to cars **with level control**, 4D.

400 133 583 (Saab part number 55 24 210) applies to cars **without level control**, 5D.

400 133 617 (Saab part number 55 24 376) applies to cars **without level control**, 4D

400 133 641 (Saab part number 55 24 533) applies to cars **with level control**, 5D

400 133 658 (Saab part number 55 24 699) applies to cars **with level control**, 4D

Note

Always check national legislation and regulations regarding mounting a towing bracket. Ensure that all requirements are complied with.

The towing bracket fulfils the requirements of 94/20/EEC.

Maximum permitted trailer weight:

Trailer with brakes: 1800 kg

Trailer without brakes: 50% of the towing vehicle's weight (vehicle in running order), but no more than 750 kg (1650 lbs).

Max. permissible towball pressure: 75 kg

Assembly weight: 10.4 kg

Maximum D-value: 10.32 kN

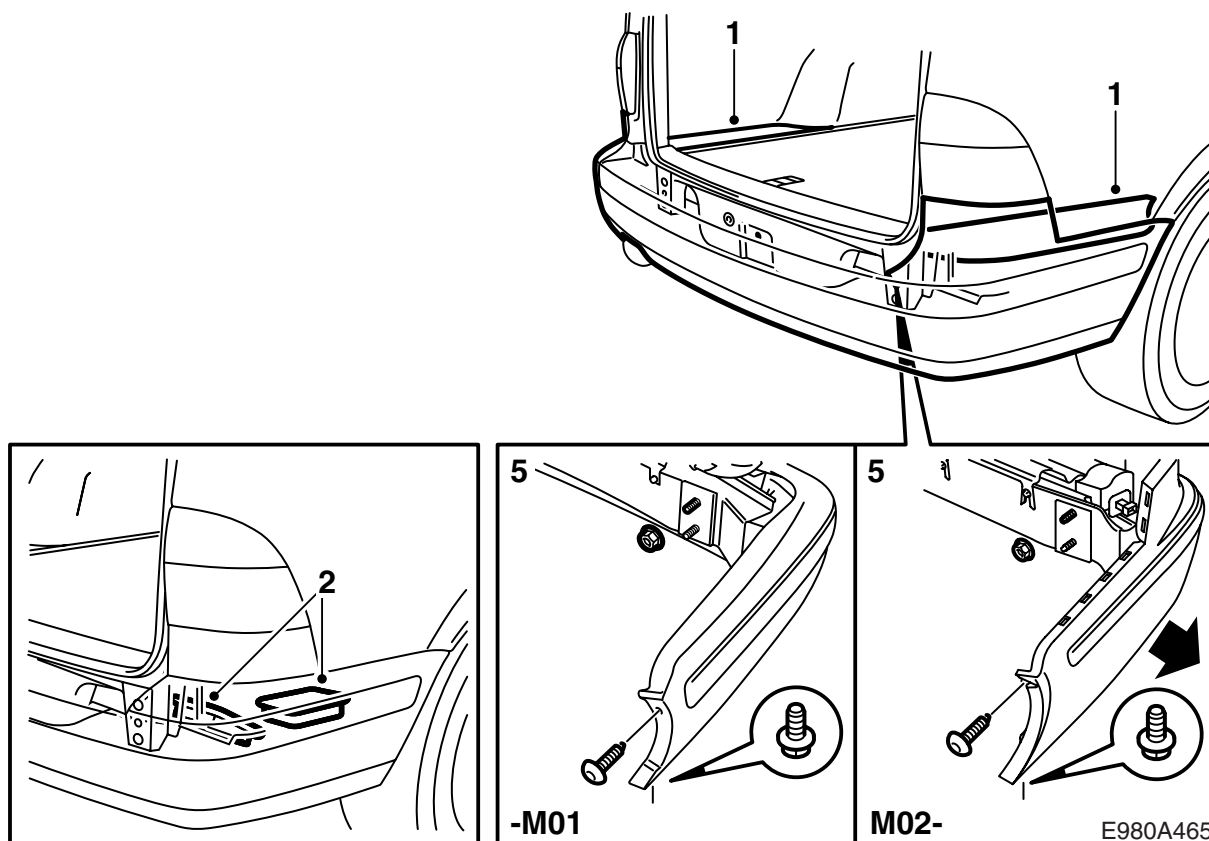
Important

Cars with SPA: In order to avoid malfunctions the enclosed ball guard must be used.

Important

The car must be inspected after the towing bracket is mounted. Show these instructions at the inspection.

The towing bracket cable harness must be fitted and connected following the instructions that accompany the cable harness.



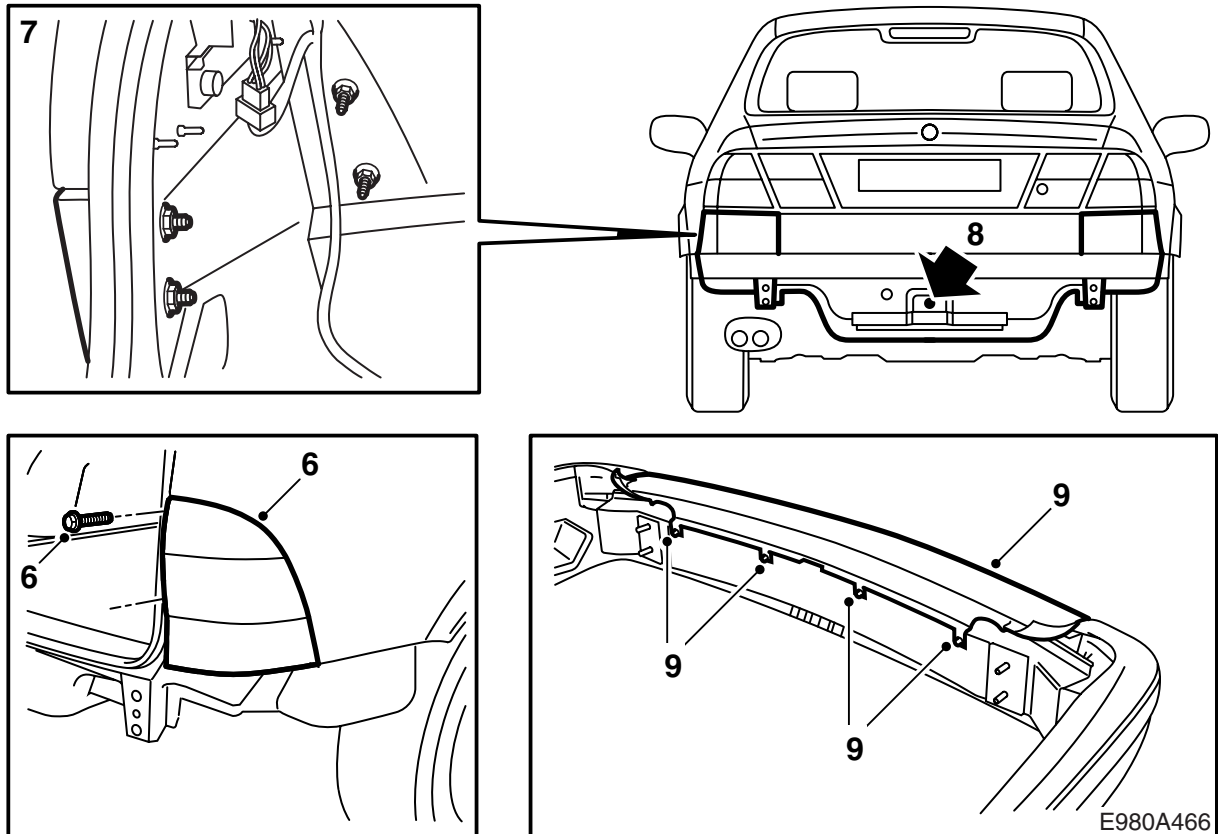
- 1 **5D**: Detach the outer sections of the luggage compartment floor.
- 2 **5D**: Lift up the storage compartments and pull away the foam blocks (2 per side) in the rear edge of the body.
- 3 **4D**: Remove the luggage compartment scuff plate.
- 4 **4D**: Detach the right and left-hand side trim in the luggage compartment. Pull away the foam blocks (2 per side) in the rear edge of the body.
- 5 **-M01**: Detach the bumper by removing the bolts at the wheel housings and the nuts from the luggage compartment.

M02-: Detach the bumper by removing the bolts at the wheel housings and the nuts from the luggage compartment and by pulling the side sections of the bumper outwards.

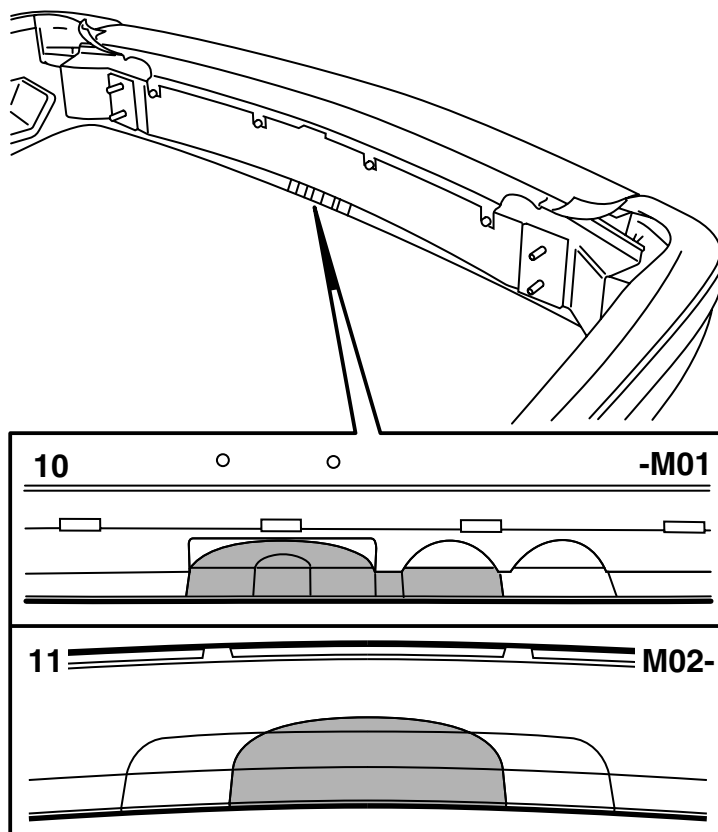
Cars with SPA: Detach the connector.

Important

Place the bumper on a soft, clean surface.



- 6 **5D -M01:** Detach the rear lights by removing the two covers over the screws, undo the screws and pull away the brackets in the front edge of the lights.
- 7 **4D -M01:** Remove the corner spacer panels under the rear lights.
- 8 Remove the jack and towing eyes and fit the rubber plug.
- 9 **5D -M01:** Unscrew the bolts to the upper section of the bumper shell slightly and carefully pull the upper section of the shell from its snap fasteners.
- 5D M02-:** Unscrew the bolts to the upper section of the bumper shell slightly, also detach the corner sections of the bumper moulding and carefully pull the upper section of the shell backwards from its snap fasteners.
- M02- with SPA:** Remove the sensor connectors.

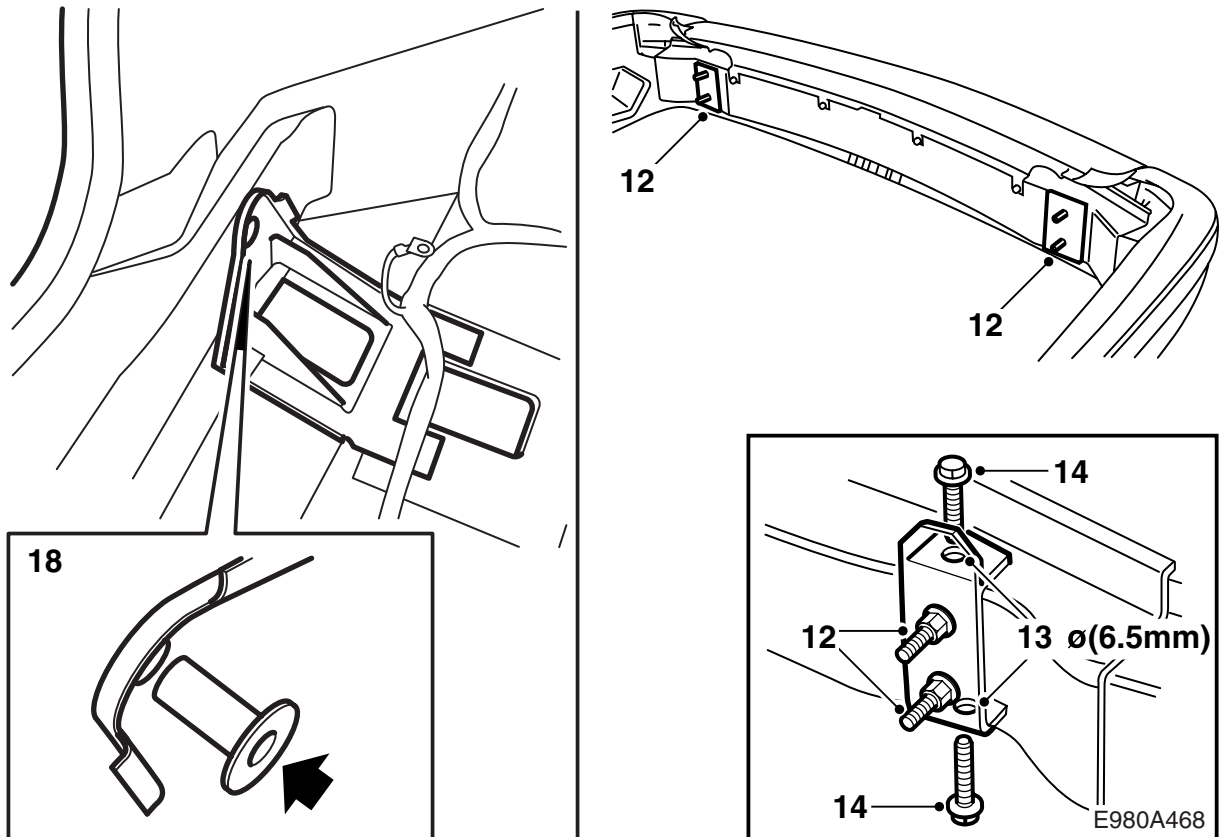


E980A467

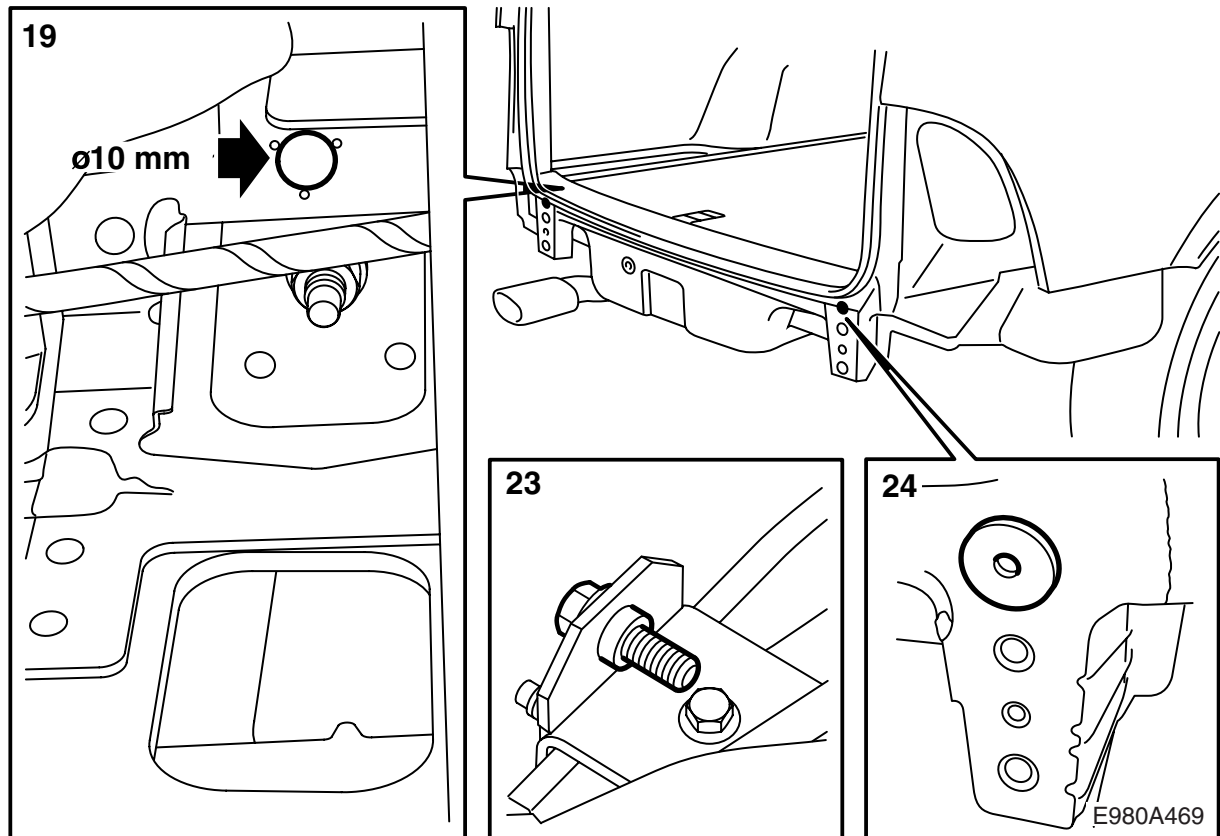
Important

Cut or saw as exact as possible. The appearance is very important. Adjust with a file if necessary.

- 10 **5D -M01:** Using a universal knife with hook shaped blade, cut out in the bumper shell for the towbar in accordance with the inner marking, and for the wiring harness and junction box in accordance with the marking (a jig saw can also be used). The remaining tab on the underside of the bumper between the towbar and box cut-outs must be removed.
- 11 **M02-:** Using a universal knife with hook shaped blade, cut out in the bumper shell for the towbar in accordance with the marked area.
- 12 Remove the spacer washers from the bumper rail and fit the reinforcements in their place. Tighten the four retaining nuts of the bumper to secure the reinforcements.
- 13 Use protective goggles and drill the four holes in the bumper rail with a 6.5 mm bit. Clean away the drilling debris from the bumper rail.
- 14 Fit the taptite bolts (self-tapping).
Tightening torque 25 Nm (20 lbf ft).



- 15 Remove the nuts.
- 16 **-M01:** Scrape away sealant compound from where the bumper reinforcements will lie against the body.
- 17 Fit the bumper and secure it to the body with the two upper nuts.
- 18 **4D:** Detach the wiring harness fitting at the bumper mountings in the luggage compartment and fit the sleeves in the holes in the luggage compartment.

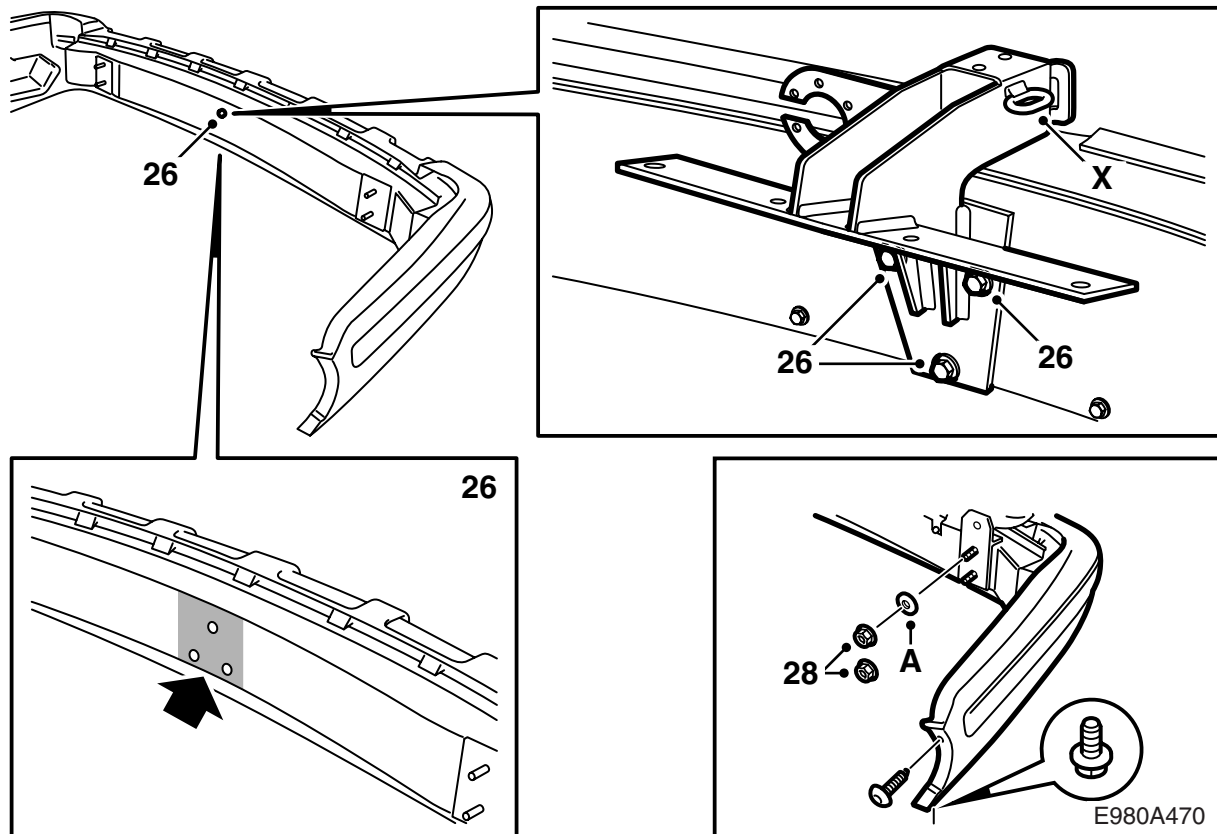


- 19 Use protective goggles and a 10 mm bit to drill through the sleeves, the holes in the rear end panel and the reinforcements.

Important

Be careful not to damage the car's cable harness.

- 20 Remove the bumper and clean all debris from the luggage compartment.
- 21 Use protective goggles and enlarge the 10 mm holes in the reinforcements with a 12.4 mm drill bit.
- 22 Deburr the holes and remove loose splinters and flakes of paint.
- 23 Fit the press nuts using a bolt, M10x30, in the new holes drilled into the reinforcements. Following which, remove the bolt.
- 24 Fit the seals on the body (self-adhering) and apply cavity seal Terotex HV 400 (part no. 30 15 930) on internal surfaces.
- M01:** Apply corrosion protection to the surfaces from which body sealant was scraped away.



25 Fit the selected cable harness following the instructions in the cable harness kit.

26 Remove the screw which is fitted in one of the holes on the bumper rail. The three screws which are designed for fitting the towbar to the bumper rail must be fitted and tightened in the bumper rail's holes. Apply 09 121 548 Protective wax (Teroson 184) completely across the surface where the towbar will be located and a further >10 cm in all directions. Remove the screws and fit the towing bracket to the bumper. Check that the line above the towing bracket's upper screw is parallel with the bumper rail.

Tightening torque 40 Nm (30 lbf ft).

Apply 09 121 548 Protective wax (Teroson 184) around the contact surface for the towbar against the bumper rail, so that the joint is sealed.

27 Position the bumper.

Cars with SPA: Attach the connector.

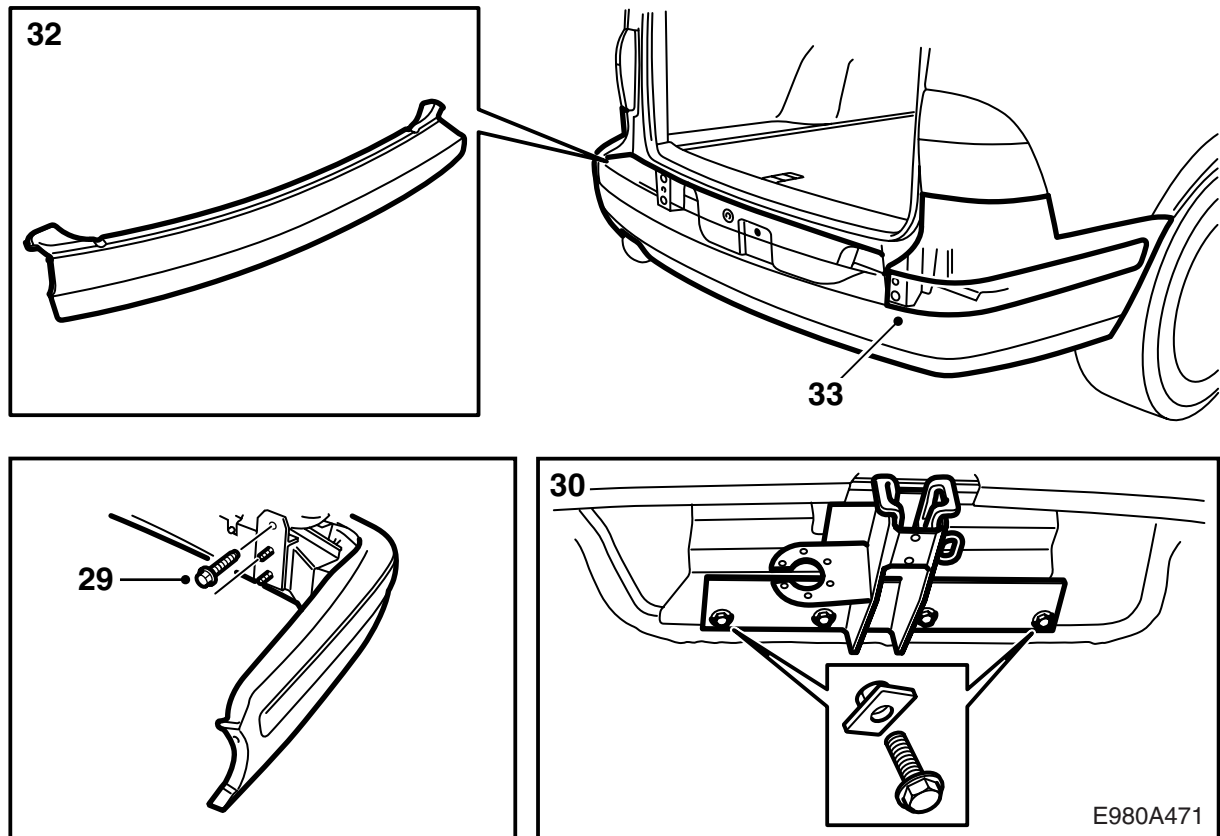
28 **-M01:** Fit the bumper to the car with four nuts.

M02-: Fit the bumper to the car with four nuts, fitting washers (A) under the top nuts.

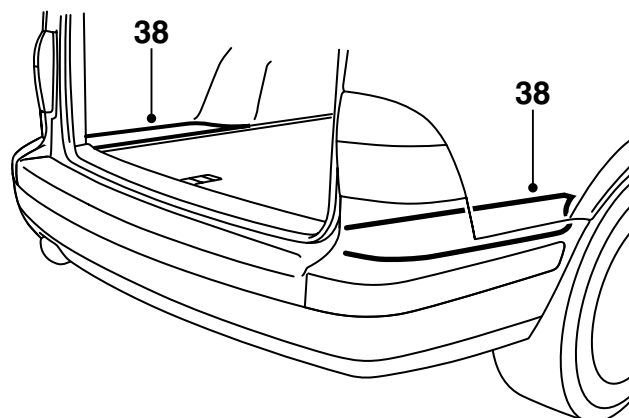
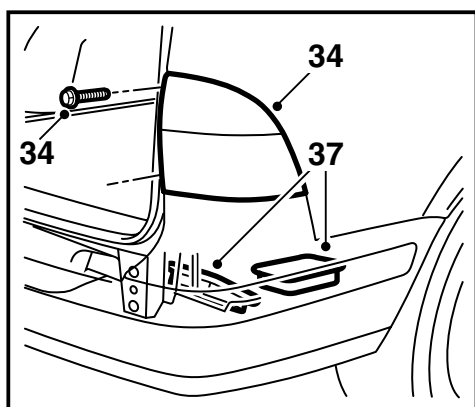
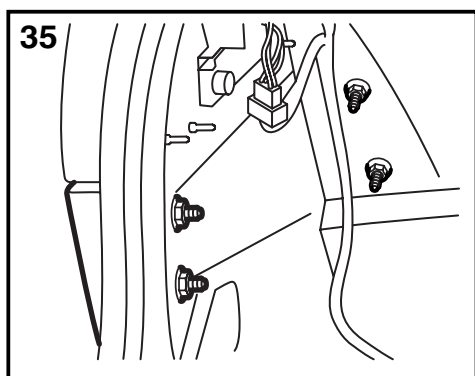
Tightening torque 40 Nm (30 lbf ft).

Fit the bolts at the wheel housings.

X Eye for attachment of trailer/caravan safety chain.

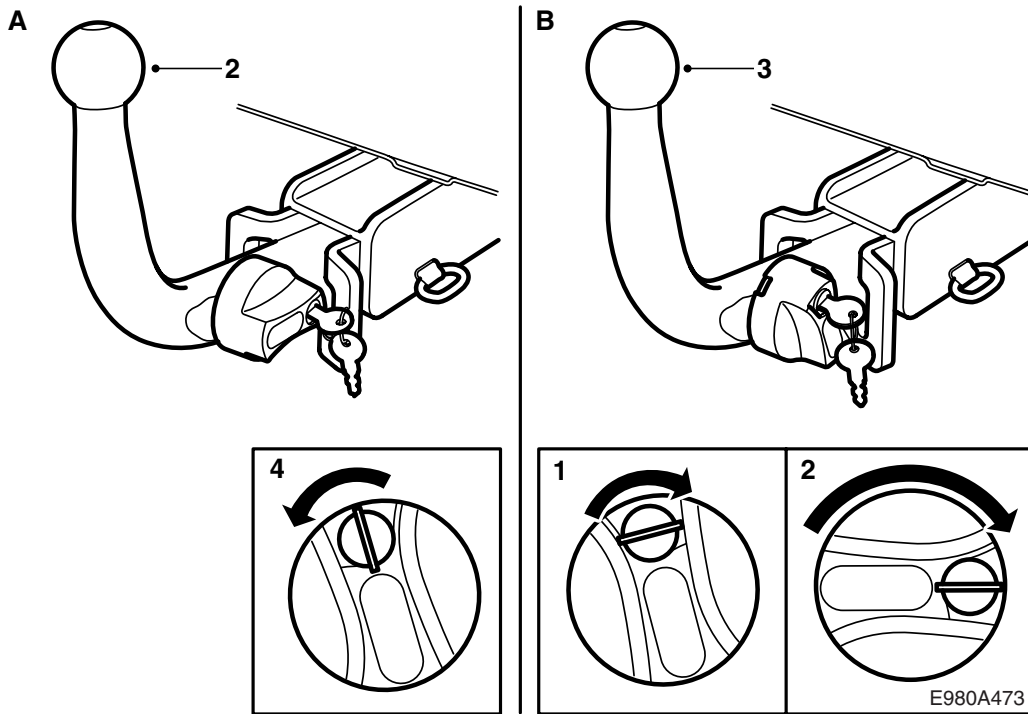


- 29 Secure the reinforcements to the car.
Tightening torque 40 Nm (30 lbf ft).
- 30 Fit the bolts and nut plates that hold the towing bracket on the body.
Tightening torque 40 Nm (30 lbf ft).
- 31 **5D M02- with SPA:** Connect the sensors.
- 32 **5D -M01:** Fit the upper section of the bumper shell by first aligning it to the four bolts on the bumper member. Following which, continue to press in the upper section of the shell with the hooks around the edge. Tighten the bolts.
5D M02-: Push in the upper section of the bumper shell into the recess in the bumper shell and align the tabs to the four bolts in the bumper member. Use a large screwdriver to position the tabs behind the bolt washers. Tighten the bolts.
- 33 **M02-:** Fit the corner sections of the bumper moulding.



E980A472

- 34 **5D -M01**: Fit the rear lights.
- 35 **4D -M01**: Fit the corner spacer panels.
- 36 **4D**: Secure the wiring harness at the bumper mountings.
- 37 Fit the jack in the toolbox, fit the foam blocks over the bumper mountings in the luggage compartment.
- 38 **5D**: Refit the storage compartments and the outer sections of the luggage compartment floor.
- 39 **4D**: Fit the right and left-hand side trim in the luggage compartment.
- 40 **4D**: Fit the luggage compartment scuff plate.
- 41 Check fit the ball unit and check the function. Place the installation instructions in the car.
- 42 Carefully tear off the page covering fitting and removal of the ball unit and hand it to the customer together with the keys and the installation instructions.



User instructions

(keep in the car's Owners Manual)

WARNING

To ensure that the towbar is coupled **correctly and safely**:

- The coupling mechanism must **always** be well lubricated. Contact your nearest Saab dealer regarding which grease is appropriate.
- **Always** fit the protective cover when the towball unit is not attached.
- It must **always** be possible to detach and attach the towball unit without it jamming.

Important

Cars with SPA: In order to avoid malfunctions the enclosed ball guard must be used.

A. Fitting the ball unit

- 1 Remove the protective cover.
- 2 Fit the ball unit into the bracket.
- 3 Press the ball unit forward and downward so that the knob is automatically turned anticlockwise and the lock is activated.
- 4 Turn the key anticlockwise and remove it.

WARNING

Green should be the only colour shown in the socket at the knob.

Tug on the ball unit to make sure it is properly secured.

B. Removing the ball unit

- 1 Insert the key in the lock and turn it clockwise.
- 2 Press in the knob and turn it clockwise until it meets resistance and an audible "click" is heard.
- 3 Lift the ball unit up and pull it rearwards.
- 4 Fit the protective cover.

Important

When the ball unit is removed, the protective collar must be fitted on the ball unit knob in order to protect the key.