

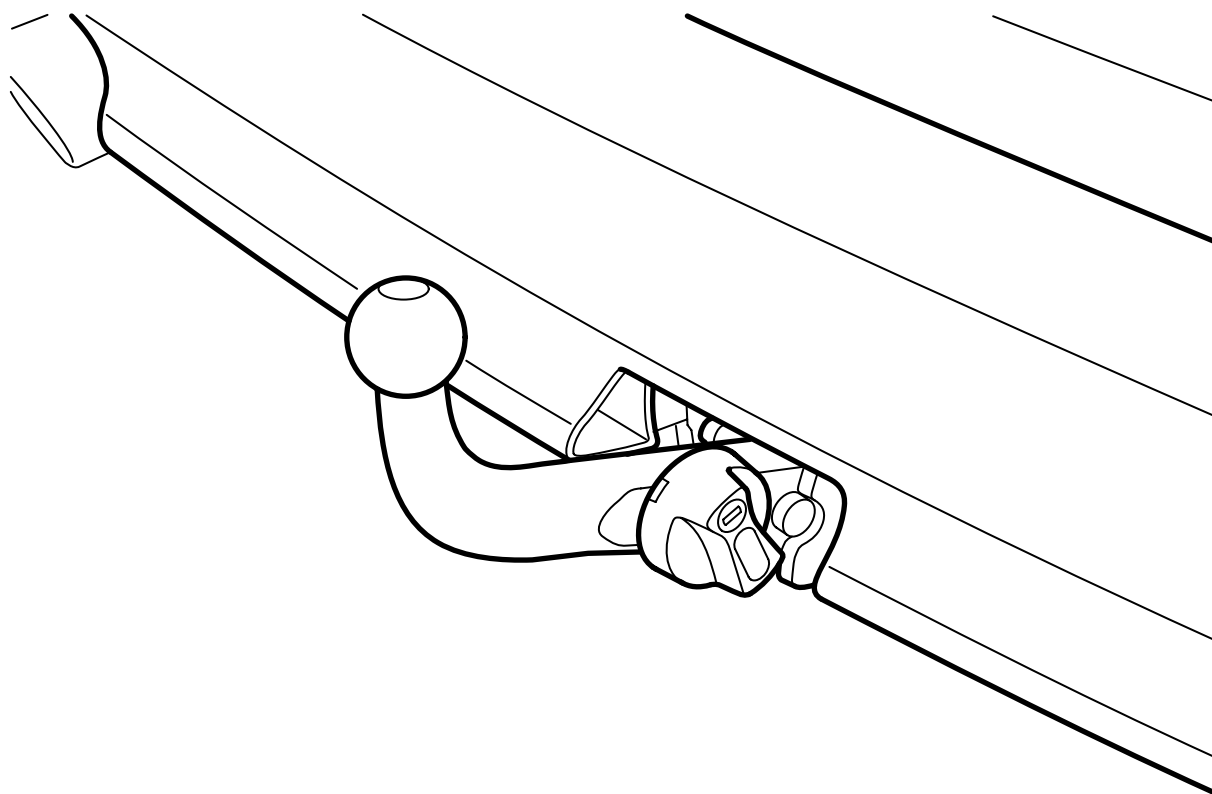


**MONTERINGSANVISNING · INSTALLATION INSTRUCTIONS
MONTAGEANLEITUNG · INSTRUCTIONS DE MONTAGE**

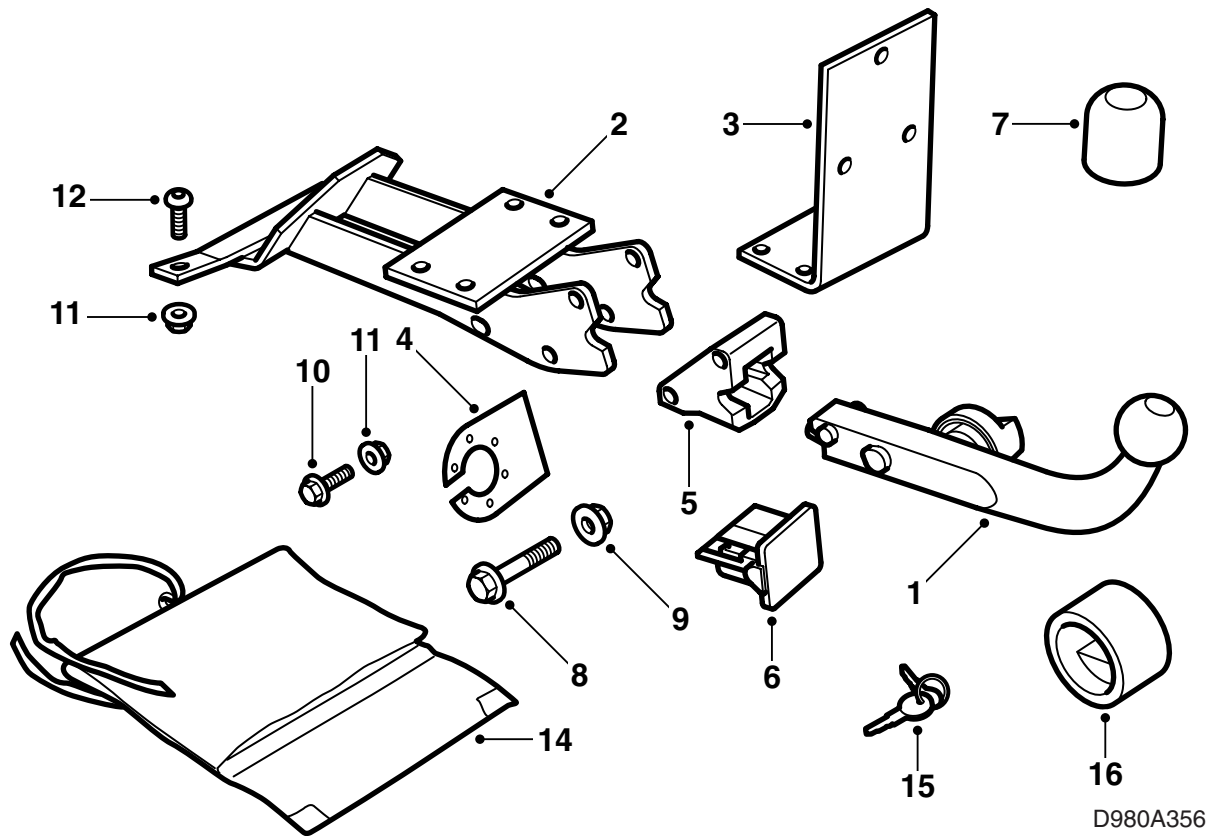
Saab 900 M94-, 9-3 -M03 (9400)

Towbar, fixed and detachable

Accessories Part No.	Group	Date	Instruction Part No.	Replaces
55 25 118 55 25 053	8:60-50	Apr 04	55 25 100	



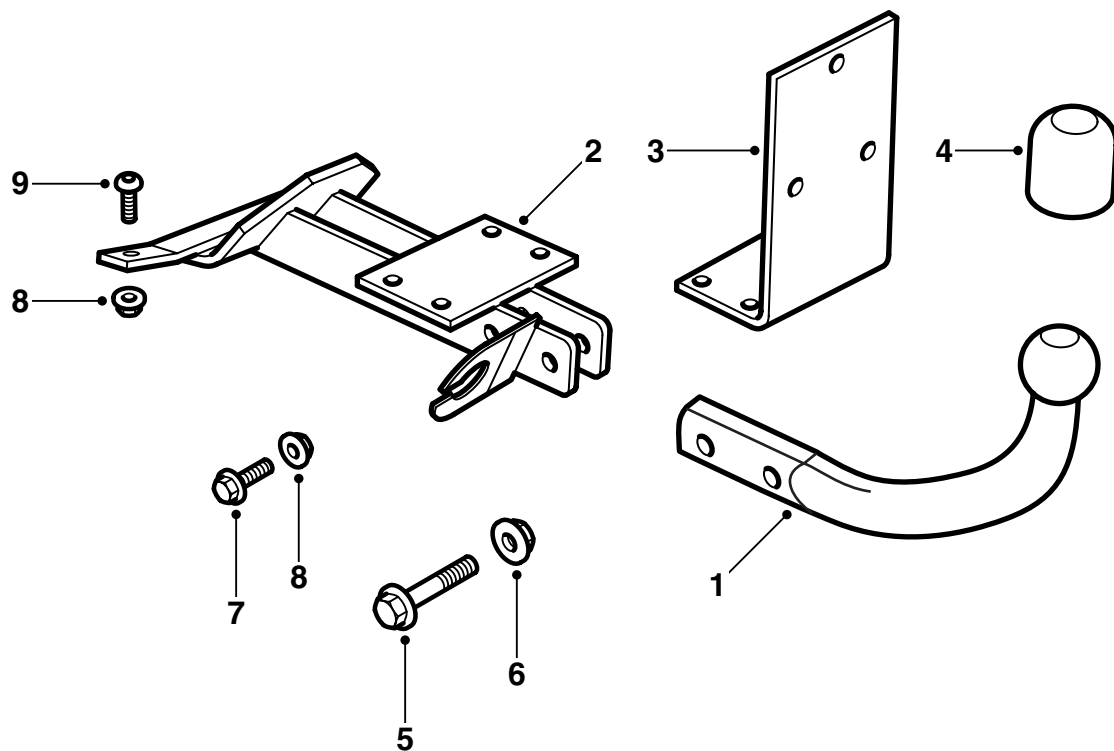
D980A355



D980A356

Detachable towbar

- 1 Towbar, detachable
- 2 Lower mounting plate
- 3 Upper mounting plate
- 4 Connector holder plate
- 5 Bracket
- 6 Protective cover
- 7 Ball guard
- 8 Bolt M12x100 (x2)
- 9 Nut M12 (x2)
- 10 Bolt M10x30 (x7)
- 11 Nut M10 (x8)
- 12 Bolt M10x40 (x2)
- 13 Template
- 14 Storage bag
- 15 Keys (x2)
- 16 Protective collar



D980A357

Fixed towbar

- 1 Towbar, fixed
- 2 Lower mounting plate
- 3 Upper mounting plate
- 4 Ball guard
- 5 Bolt M12x70 (x2)
- 6 Nut M12 (x2)
- 7 Bolt M10x30 (x7)
- 8 Nut M10 (x8)
- 9 Bolt M10x40 (x2)
- 10 Template

Note

Always check national legislation and regulations regarding mounting a towing bracket. Ensure that all requirements are complied with.

The towing bracket fulfils the requirements of 94/20/EEC.

Maximum permitted trailer weight:

Trailer with brakes: 1600 kg

Trailer without brakes: 50% of the towing vehicle's weight (vehicle in running order), but no more than 750 kg (1650 lbs).

Max. permissible towball pressure: 75 kg

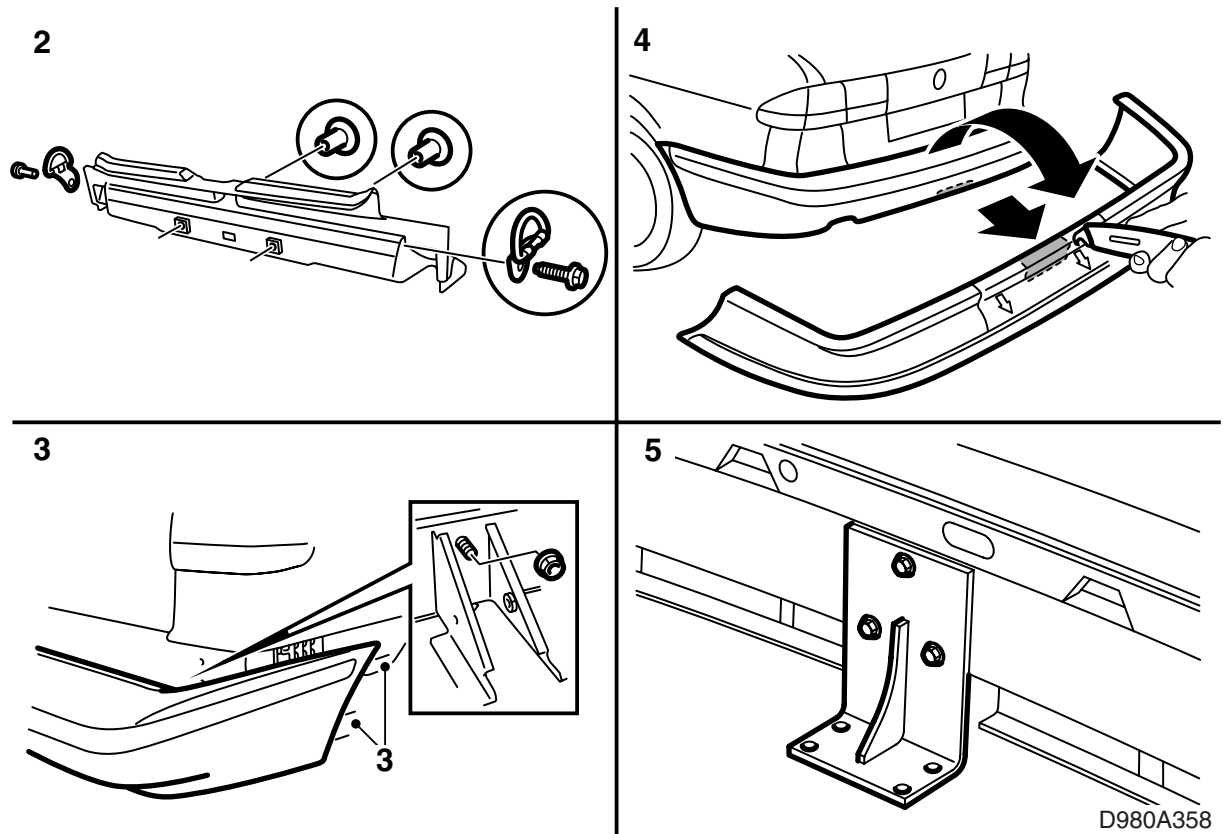
Weight complete: 13.2 kg (detachable towbar)

11.5 kg (fixed towbar)

Important

The car must be inspected after the towing bracket is mounted. Show these instructions at the inspection.

The towing bracket cable harness must be fitted and connected following the instructions that accompany the cable harness.



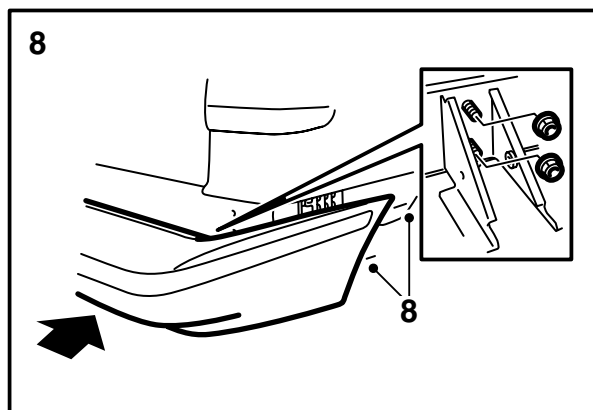
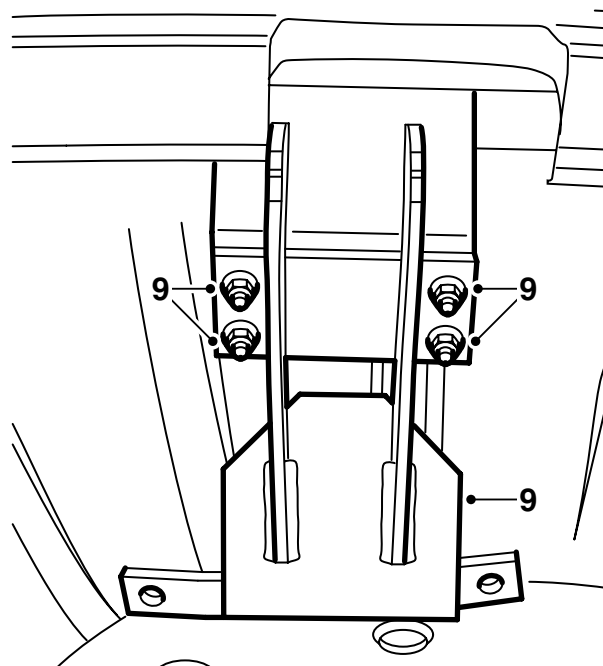
- 1 Lift the spare wheel, foam block and tool kit out of the spare wheel well.
- 2 Remove the rear lashing eyes from the luggage compartment and remove the scuff plate.
- 3 Remove the rear bumper.
9-3 Aero M01-: Remove the plastic extension from the rear/lower edge of the rear wheel housings.
- 4 **Detachable towbar:**

Important

There are different cutting templates depending on the car variant in question, with or without rear bumper skirt and for 9-3 Aero M01-.

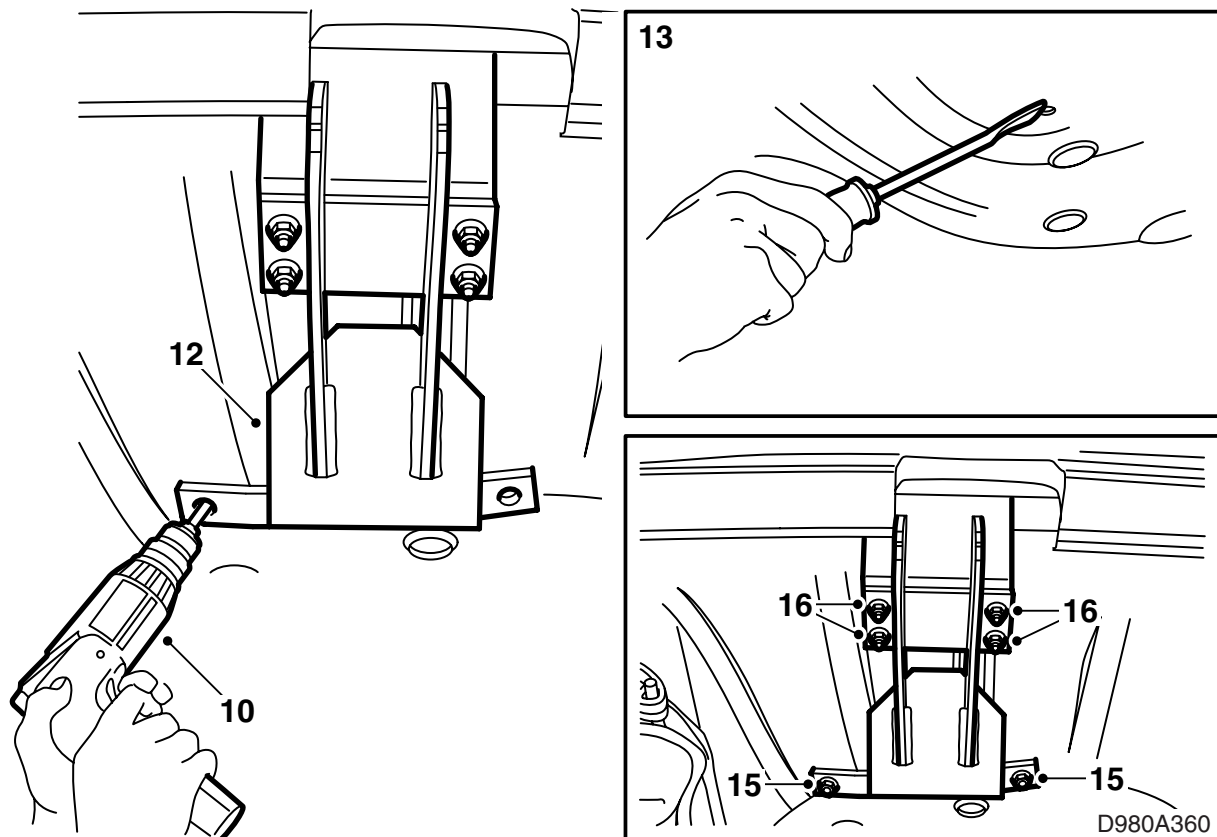
- Cut the bumper shell in accordance with the template cutting line.
- 5 Remove the bolt fitted in one of the holes on the bumper rail and fit the upper mounting plate to the bumper. Check that the line above the mounting plate upper bolt is parallel with the bumper rail.

Tightening torque 40 Nm (30 lbf ft)

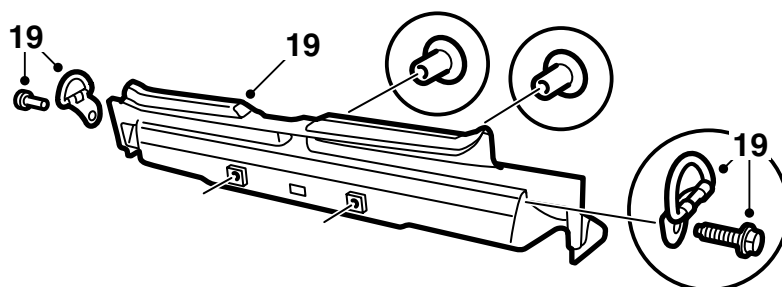
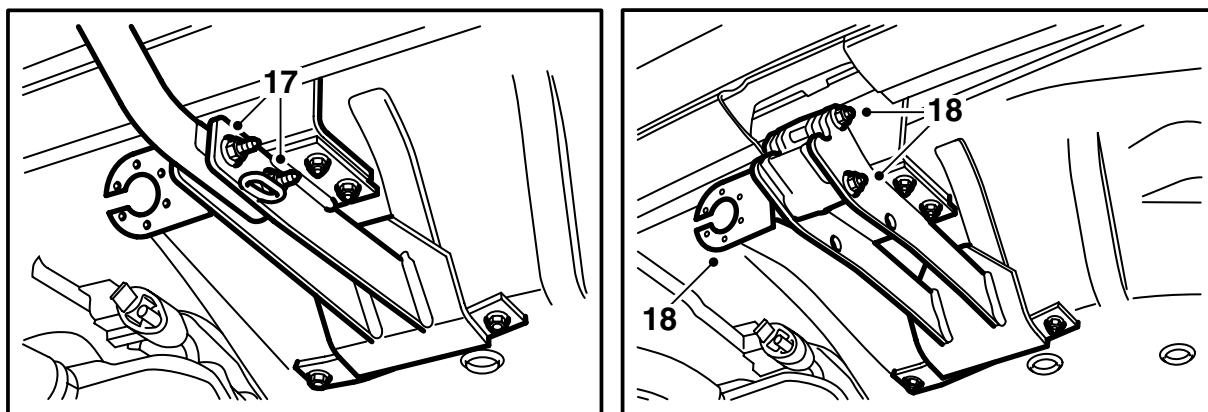


D980A359

- 6 Drill a hole for the wiring harness in accordance with the wiring harness kit instructions.
- 7 Deburr the hole and remove loose drillings and flakes of paint. Clean with Teroson FL Cleaner or similar. Apply Standox 1K Primer Filler or similar. Apply finish paint.
- 8 Fit the bumper with four nuts (2 included in kit).
Tightening torque 40 Nm (30 lbf ft)
 If necessary, tighten the bolts by the wheel housings.
9-3 Aero M01-: Fit the plastic extension to the lower/rear edge of the rear wheel housings.
- 9 Fit the upper mounting plate and the lower mounting plate together without tightening the bolts.



- 10 Fit the lower mounting plate to the spare wheel well and tighten the bolts. Use the towbar unit as a template and drill 2 holes with a 10 mm drill bit in the spare wheel well.
- 11 Mark, in the underseal, the outer edges of the mounting plate.
- 12 Remove the lower mounting plate.
- 13 Carefully scrape away the underseal within the marked area.
- 14 Deburr the holes and remove loose drillings and flakes of paint. Clean with Teroson FL Cleaner or similar. Apply Standox 1K Primer Filler or similar. Apply finish paint. Apply Terotex HV 400 or similar to the area where the underseal was scraped away.
- 15 Fit the upper mounting plate and the lower mounting plate together. Fit the towbar with 2 bolts and 2 nuts through the drilled holes in the spare wheel well. The bolts must be fitted from inside the luggage compartment.
- Tightening torque 50 Nm (37 lbf ft)**
- 16 Tighten the bolts between the upper mounting plate and the lower mounting plate.
- Tightening torque 70 Nm (52 lbf ft)**



D980A361

17 **Fixed towbar:** Fit the towbar in the lower mounting plate.

Tightening torque 90 Nm (66 lbf ft)

18 **Detachable towbar:** Fit the bracket and the contact holder plate in the lower mounting plate.

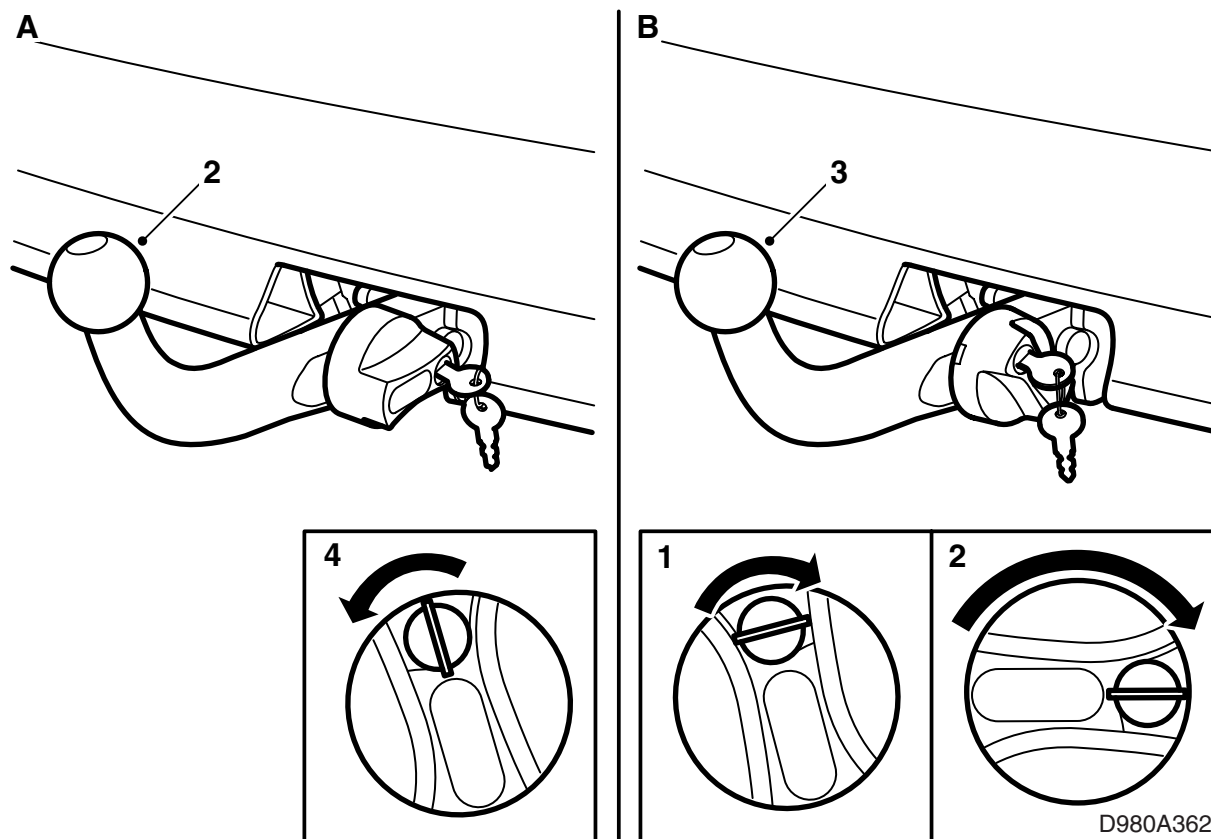
Tightening torque 70 Nm (52 lbf ft)

19 Fit the scuff plate and the lashing eyes in the luggage compartment.

20 Put the spare wheel and foam block back into the spare wheel well.

21 Apply Teroson T102 Underseal or similar around the towbar mounting to the body.

22 **Detachable towbar:** Carefully tear off the page covering the fitting and removal of the ball unit and hand it over to the customer together with the installation instructions.



**User instructions, detachable towbar
(keep in the car's Owners Manual)**

⚠ WARNING

To ensure that the towbar is coupled **correctly and safely**:

- The coupling mechanism must **always** be well lubricated. Contact your nearest Saab dealer regarding which grease is appropriate.
- **Always** fit the protective cover when the towball unit is not attached.
- It must **always** be possible to detach and attach the towball unit without it jamming.

A. Fitting the ball unit

- 1 Remove the protective cover.
- 2 Fit the ball unit into the bracket.
- 3 Press the ball unit forward and downward so that the knob is automatically turned anticlockwise and the lock is activated.
- 4 Turn the key anticlockwise and remove it.

⚠ WARNING

Green should be the only colour shown in the socket at the knob.

Tug on the ball unit to make sure it is properly secured.

B. Removing the ball unit

- 1 Insert the key in the lock and turn it clockwise.
- 2 Press in the knob and turn it clockwise until it meets resistance and an audible "click" is heard.
- 3 Lift the ball unit up and pull it rearwards.
- 4 Fit the protective cover.

Important

When the ball unit is removed, the protective collar must be fitted on the ball unit knob in order to protect the key.