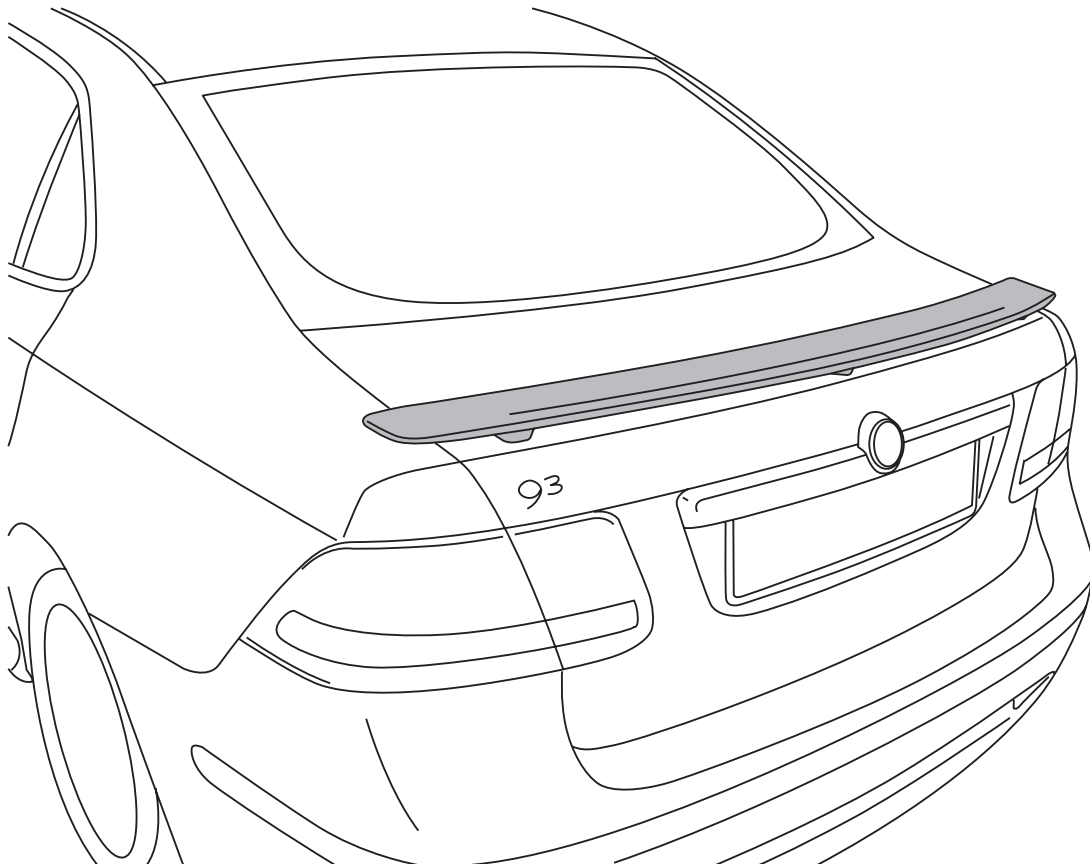
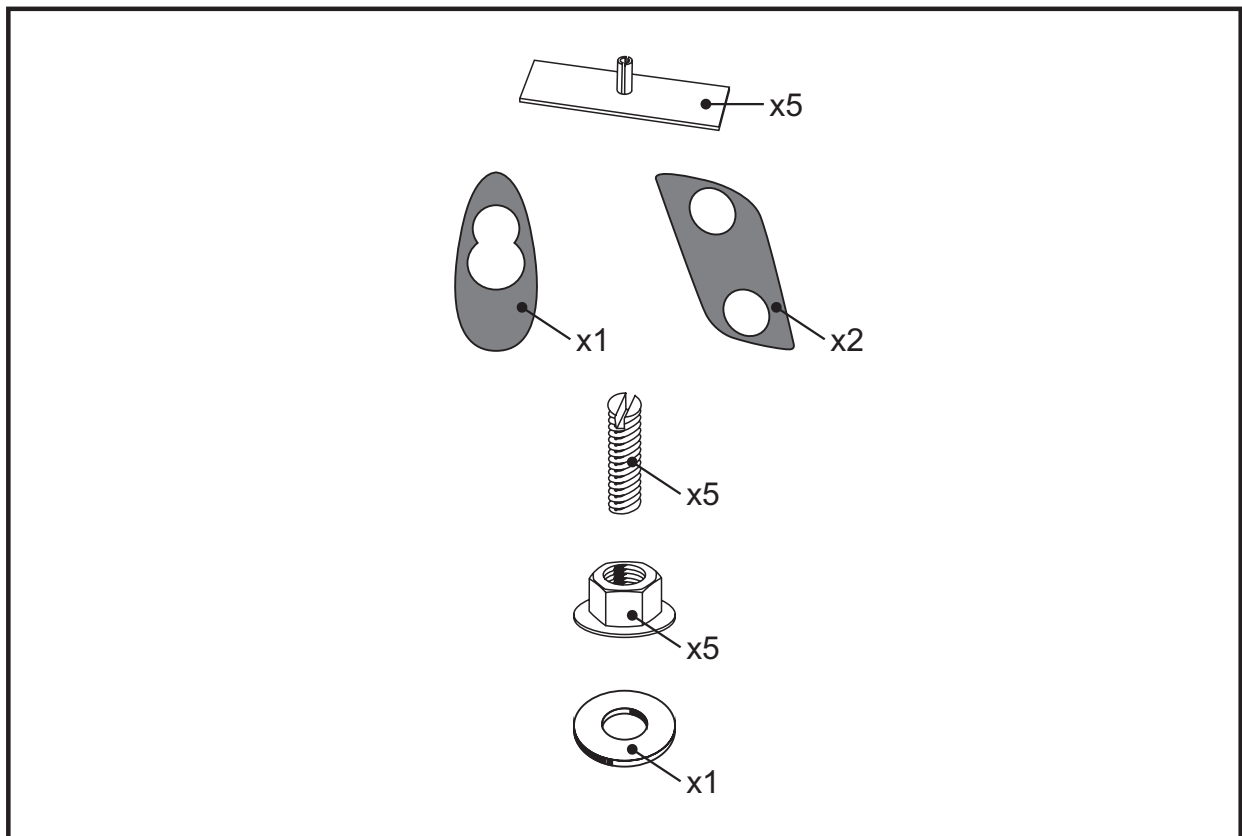
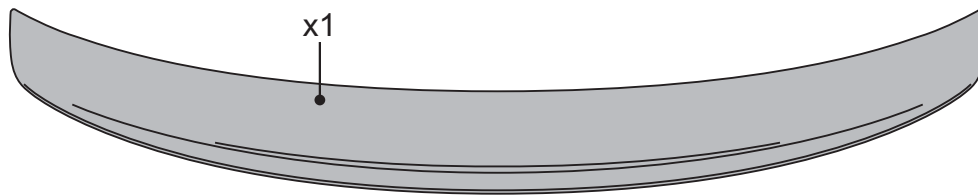




**MONTERINGSANVISNING • INSTALLATION INSTRUCTIONS
MONTAGEANLEITUNG • INSTRUCTIONS DE MONTAGE**

Accessories Part No.	Date	Instruction Part No.	Replaces
32 025 845	May 2007	32 026 184	





Importante

AVVERTENZA

Leggere attentamente le istruzioni per l'installazione prima di utilizzare l'accessorio.

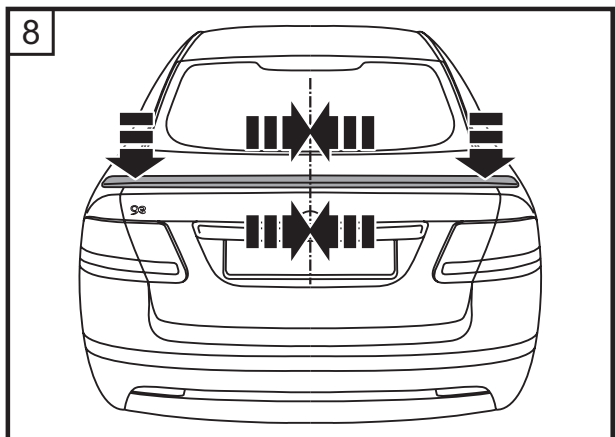
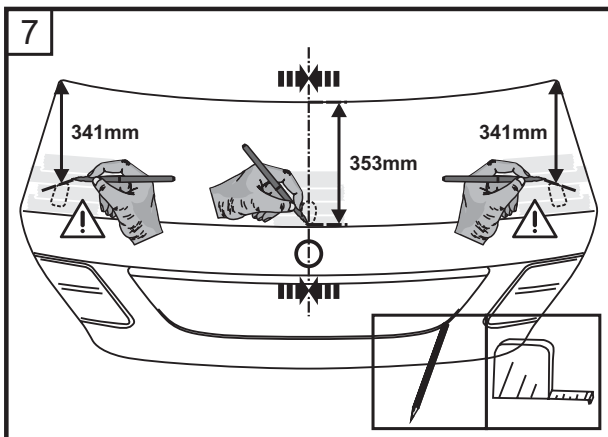
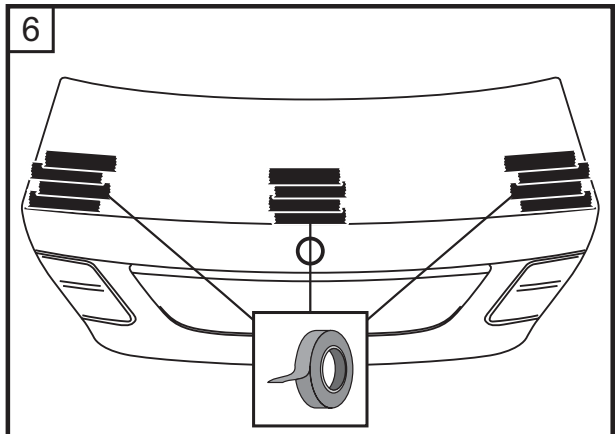
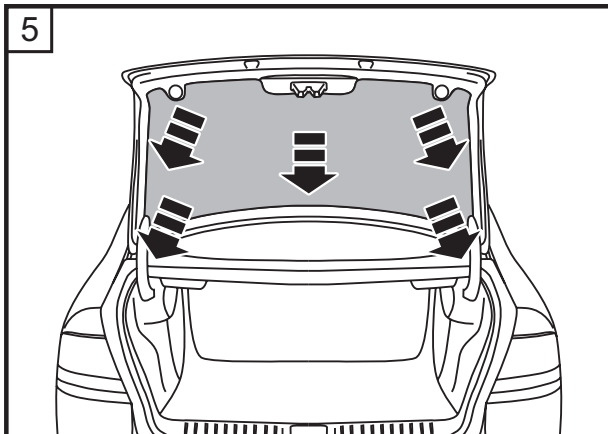
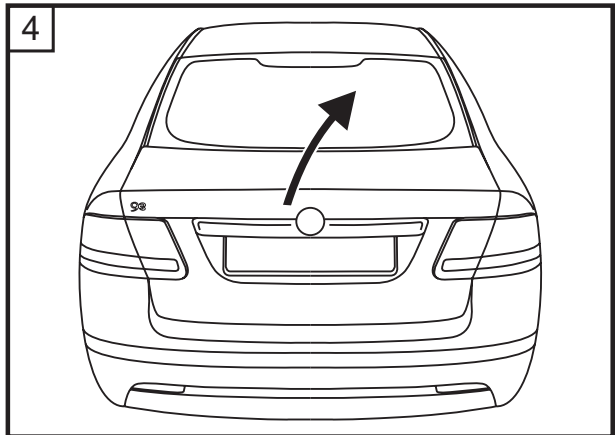
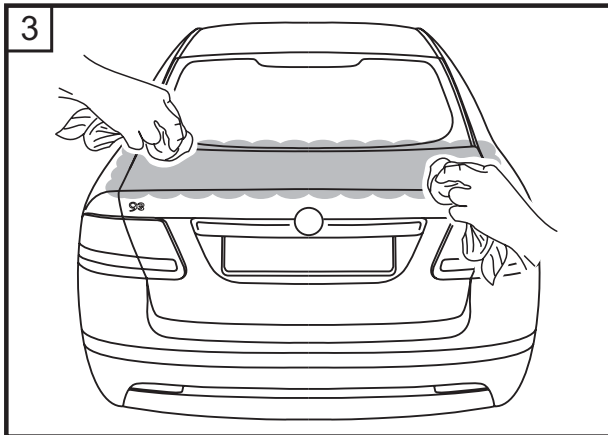
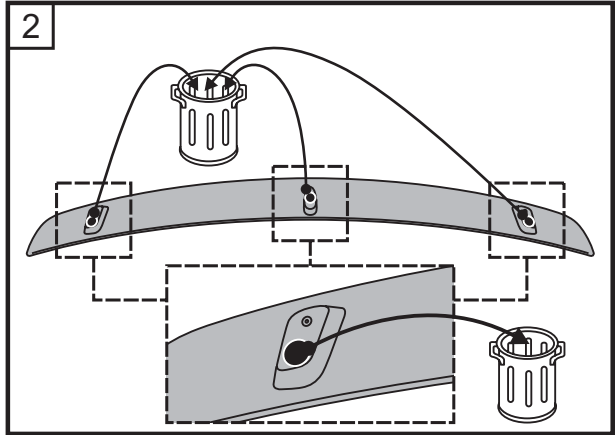
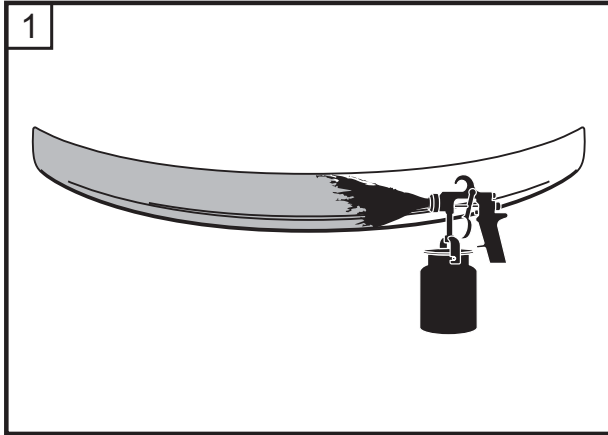
Le presenti istruzioni per l'installazione devono essere conservate nell'automobile.

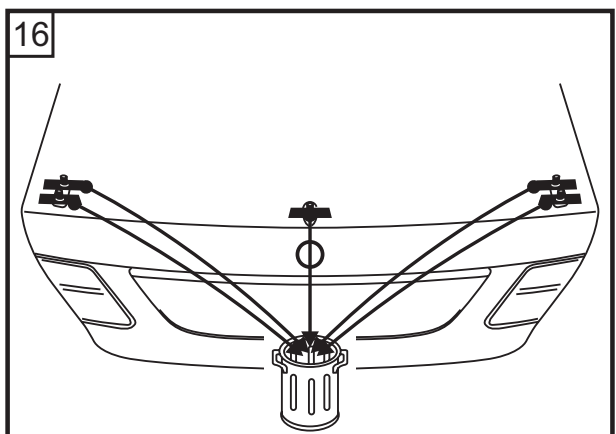
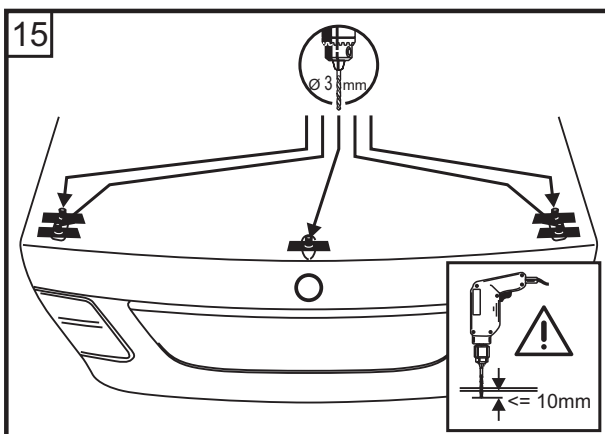
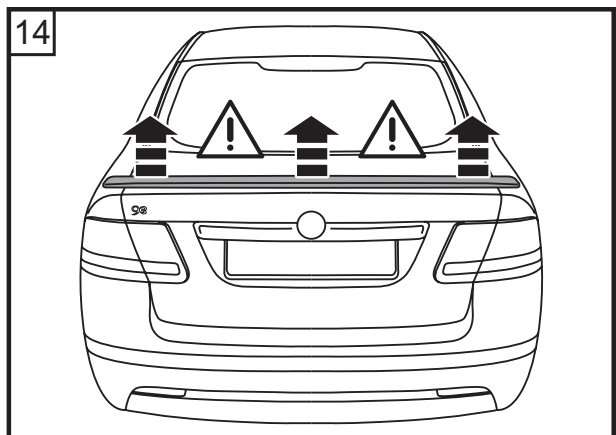
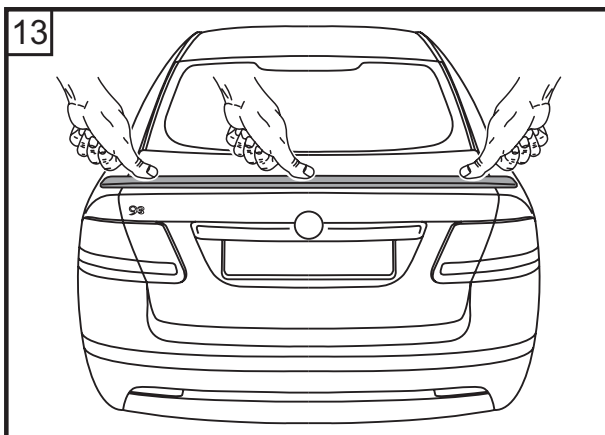
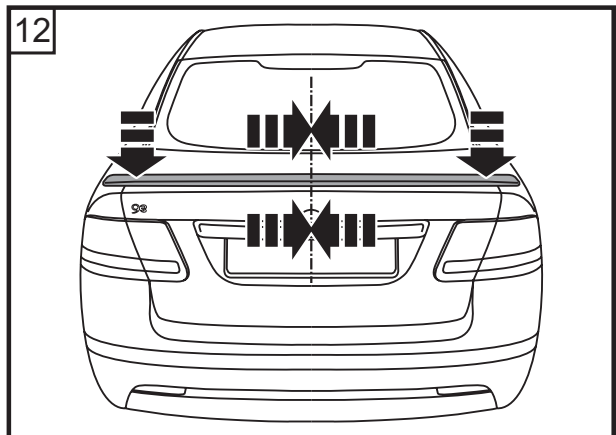
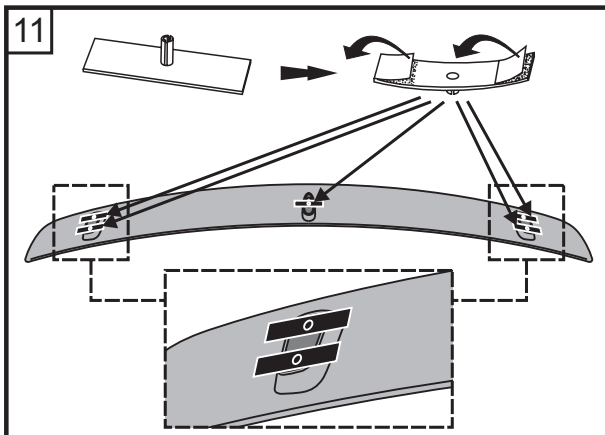
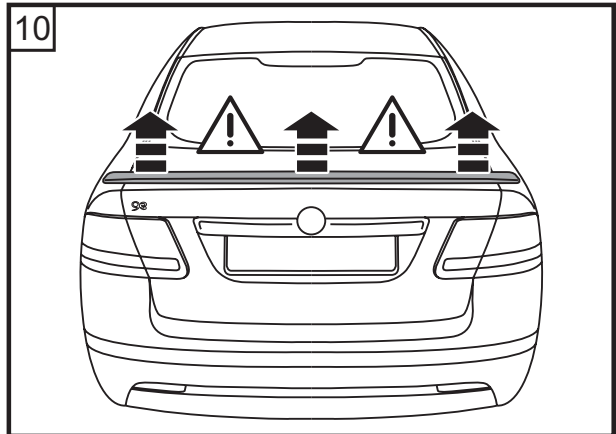
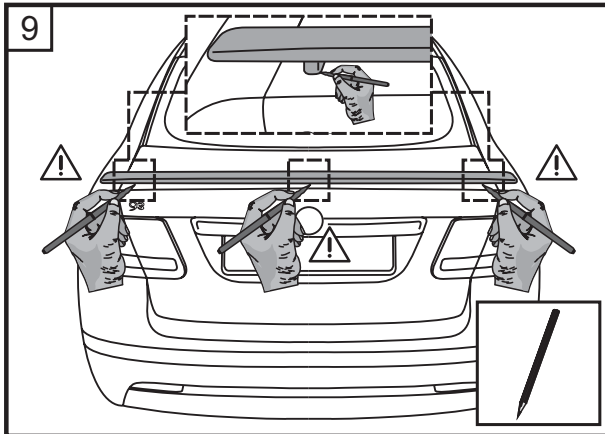
In caso di incertezze, si prega di contattare il rivenditore più vicino.

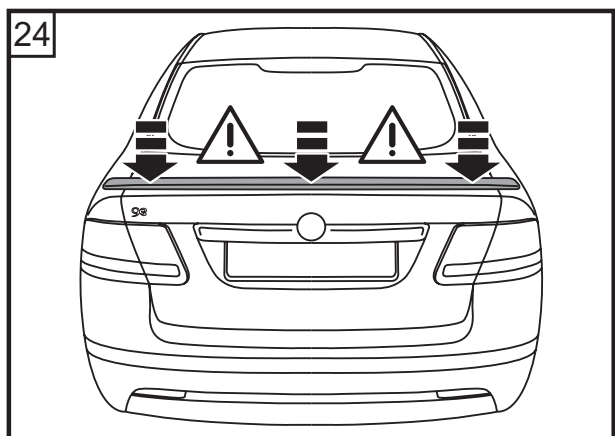
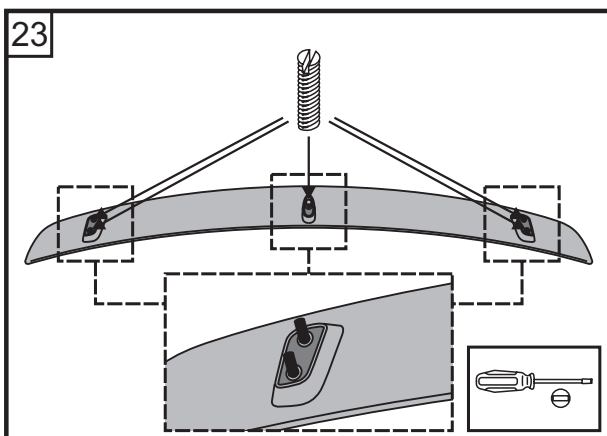
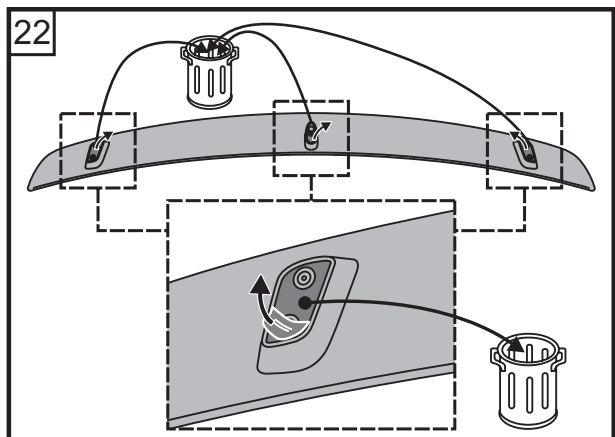
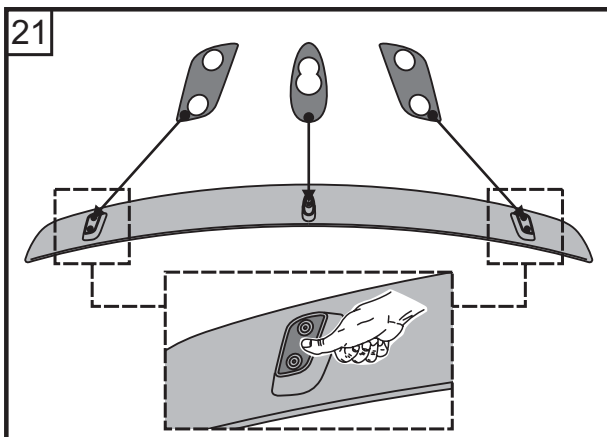
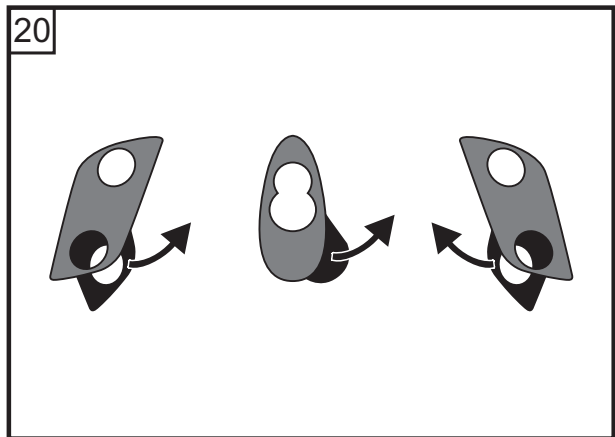
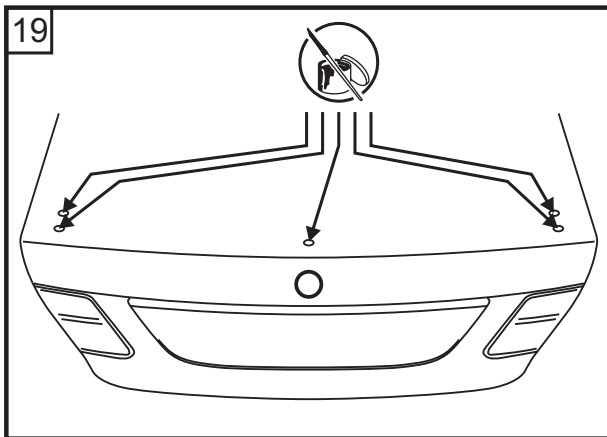
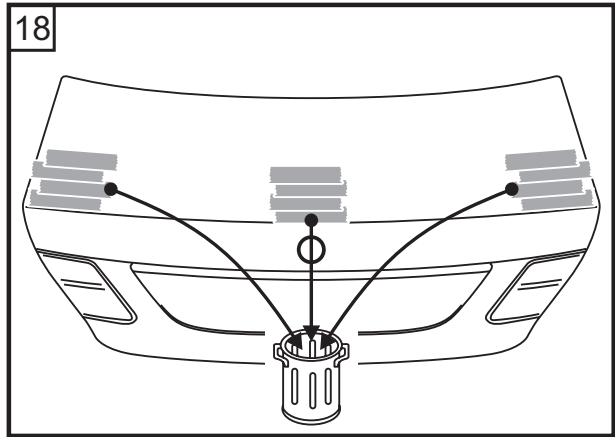
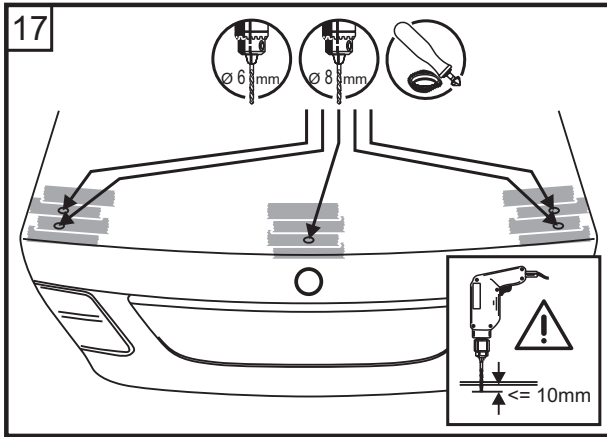
Non guidare il veicolo prima che siano trascorse almeno 5 ore dall'installazione del pezzo!

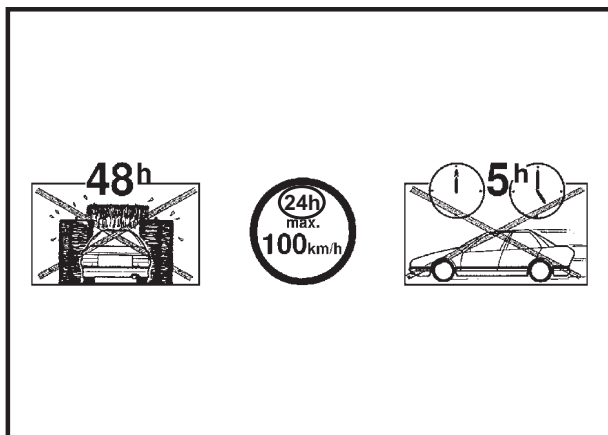
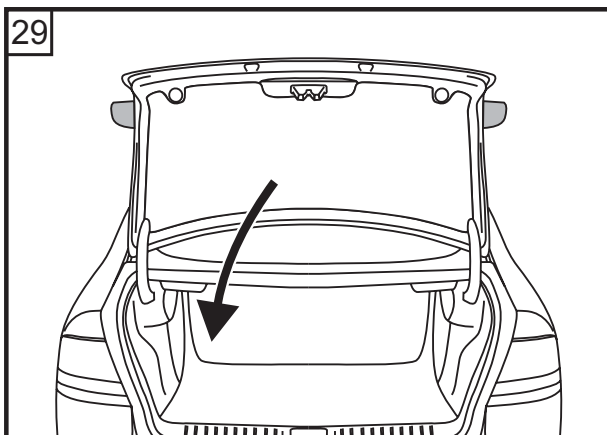
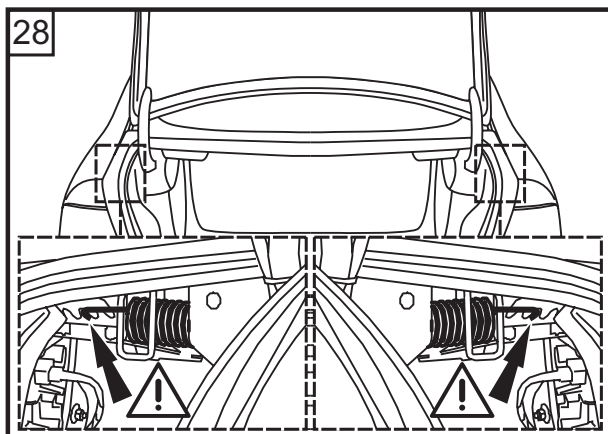
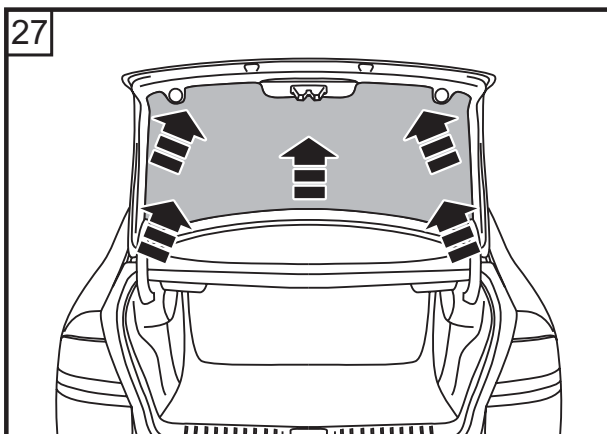
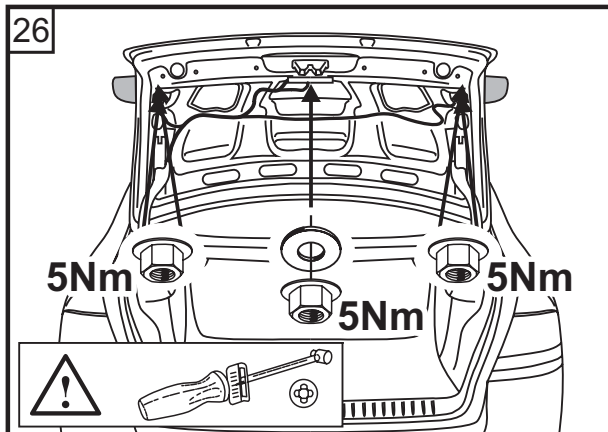
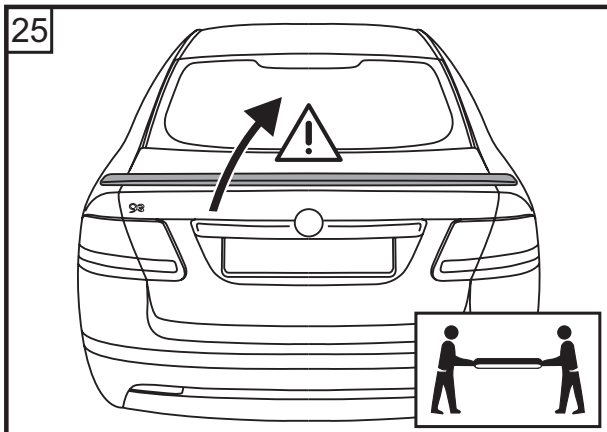
Non guidare il veicolo ad alta velocità (oltre 100km/h) prima che siano trascorse almeno 24 ore dall'installazione del pezzo!

Non sottoporre il veicolo al lavaggio a rulli prima che siano trascorse almeno 48 ore dall'installazione del pezzo!





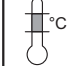








Istruzioni per la verniciatura di pezzi che hanno già ricevuto la mano di fondo

IT		Rettificare accuratamente il componente con la mano di fondo (P800-P1000). Evitare di rettificare attraverso la mano di fondo.
		Verificare la presenza di eventuali punti difettosi, ripararli e rettificare accuratamente i punti riparati (P800-P1000). Riapplicare la mano di fondo sui punti rettificati con l'ausilio di un apposito applicatore in plastica.
		Pulire a fondo utilizzando un decapante a base di silicone.
		Durante la verniciatura, è importante assicurare un sostegno adeguato per i componenti (rischio di distorsione)! Preparazione della vernice e tecnica di applicazione secondo il produttore della vernice; gli additivi elasticizzati indicati dal produttore della vernice sono particolarmente importanti. La designazione del materiale è visibile all'interno del componente (>.....<, ad es. >PUR-MF15<).
		Non essiccare artificialmente la vernice (max. 40°C)!