

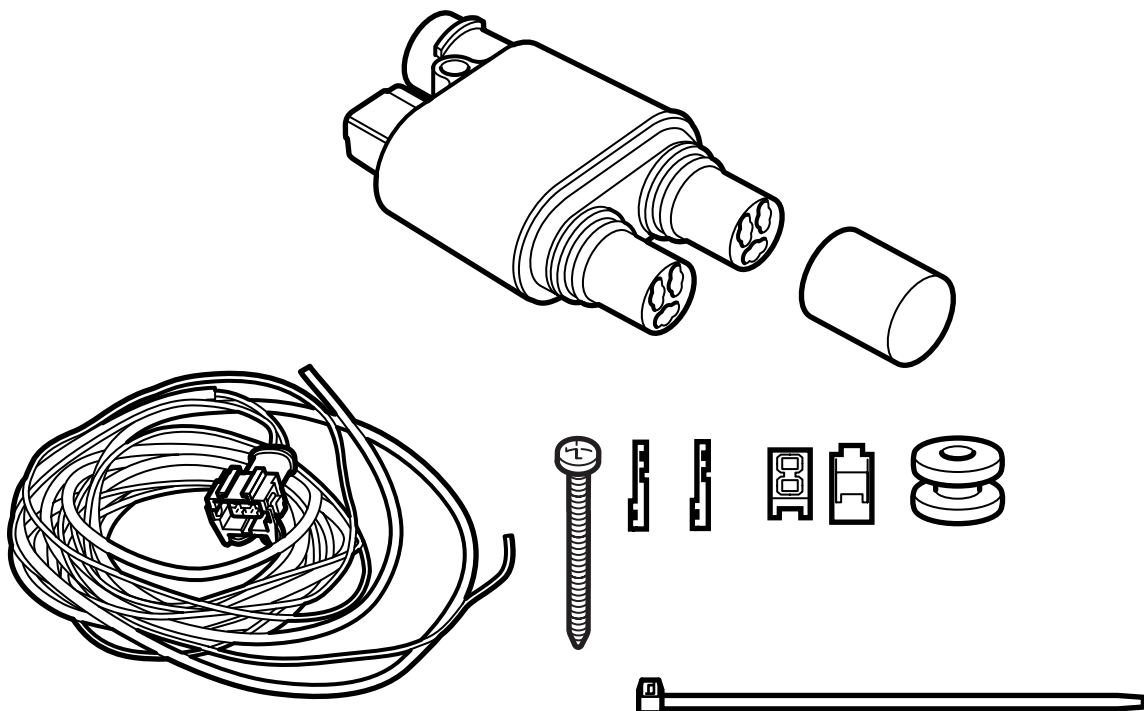


**MONTERINGSANVISNING · INSTALLATION INSTRUCTIONS  
MONTAGEANLEITUNG · INSTRUCTIONS DE MONTAGE**

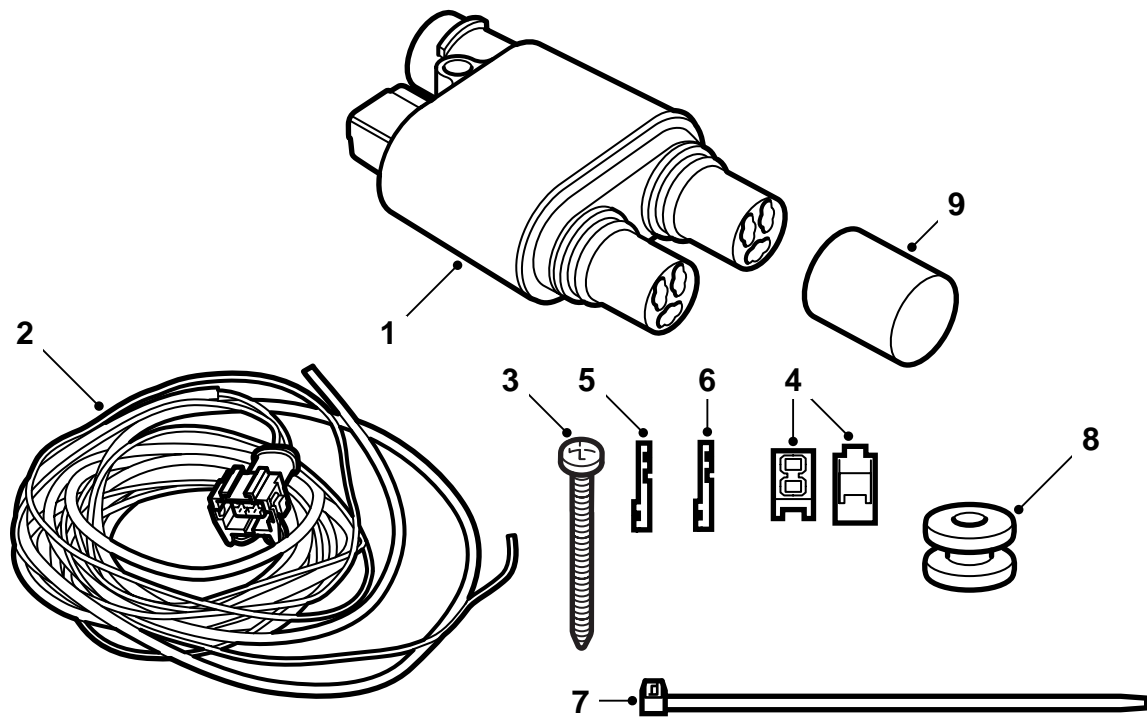
**Saab 9-3 (9400) -M03, Saab 9-5**

Timer kit

Accessories Part No.	Group	Date	Instruction Part No.	Replaces
32 026 603 400 130 878	9:87-29	Nov 07	86 98 706	86 98 706 Nov 05

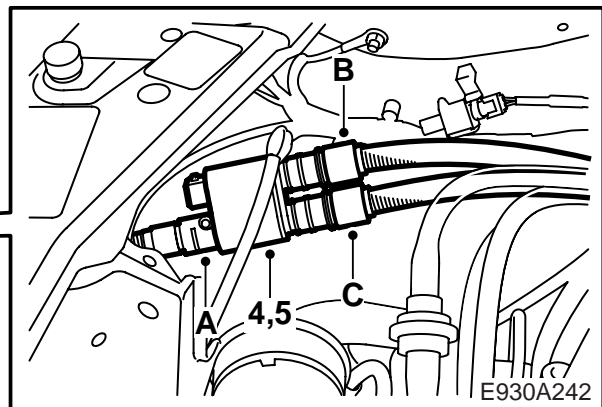
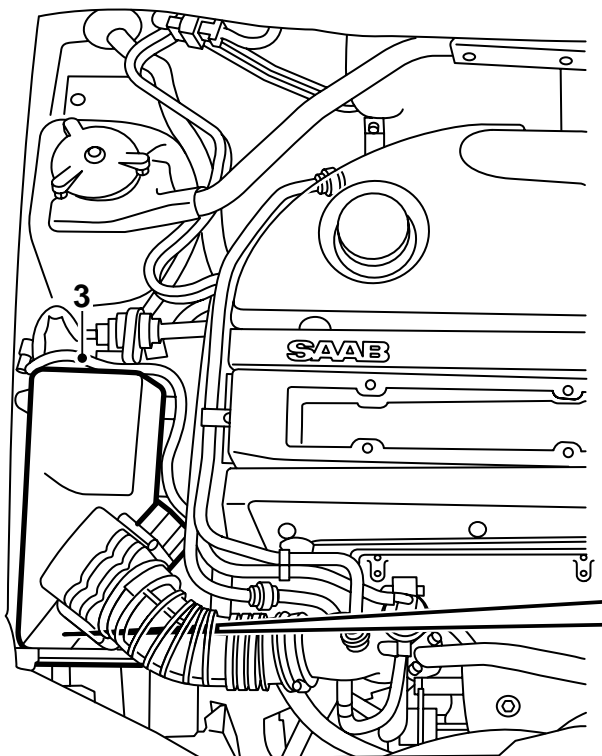


E930A231



E930A232

- 1 Timer relay
- 2 Wiring harness
- 3 Screw
- 4 Distribution block
- 5 Connector terminal, small (Saab 9-3)
- 6 Connector terminal, large (Saab 9-5)
- 7 Cable tie (5)
- 8 Grommet
- 9 Protective cap



## Saab 9-3

The timer function is to be controlled by the SID unit, which must be programmed with TECH2.

### **WARNING**

It is important to lubricate the connection cable O-rings before attachment. All connections must be pressed together hard. If the protective cap is to be fitted, the connection must not be lubricated.

- 1 Disconnect the battery and lift it out.
- 2 Detach the relay/fuse holder and lift it out of the electrical distribution box in the engine bay.
- 3 Remove the air cleaner.
- 4 **If the car has been fitted with a branching kit:** Remove the branch contact and connect the timer relay. Fit the relay in the mounting hole of the branch contact.
- 5 **If the car is not fitted with a branching kit:** Fit the timer relay as follows:
  - Place the timer relay as in the illustration and mark the hole position using the contact as a template.
  - Drill a 3.5 mm hole.
  - Deburr the hole and remove loose swarf and flakes of paint. Clean with Teroson FL cleaner. Apply Standox 1K Füllprimer. Apply finish paint. Use Terotex HV400 or Mercasol 1 on inside surfaces.

- Connect the intake contact to the timer relay (A).
- Connect other relevant connection cables to the timer relay as follows:

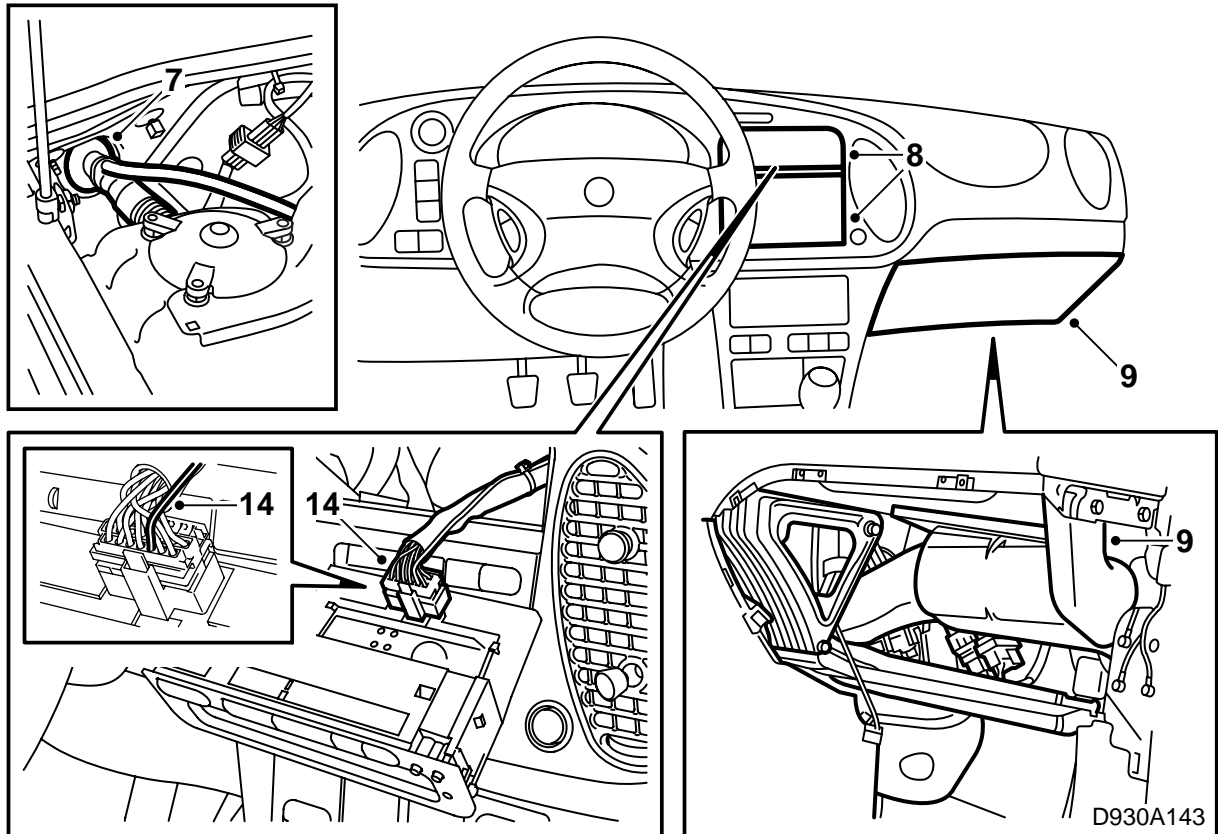
**Engine heater only:** Connect the engine heater cable to socket C and fit the protective cap over socket B.

### **WARNING**

Check that the connection where the protective cap is to be fitted is clean and dry. The protective cap must be turned at least one rotation when being pressed into place.

**Engine heater and cabin socket:** Connect the engine heater cable to socket B and the cabin socket cable to socket C.

- Fit the timer relay.
- 6 Connect the 2-pin connector to the timer relay and run the wiring harness supplied with the kit alongside the car's wiring harness and over the wheel housing towards the bulkhead partition. Secure the wiring harness as necessary.

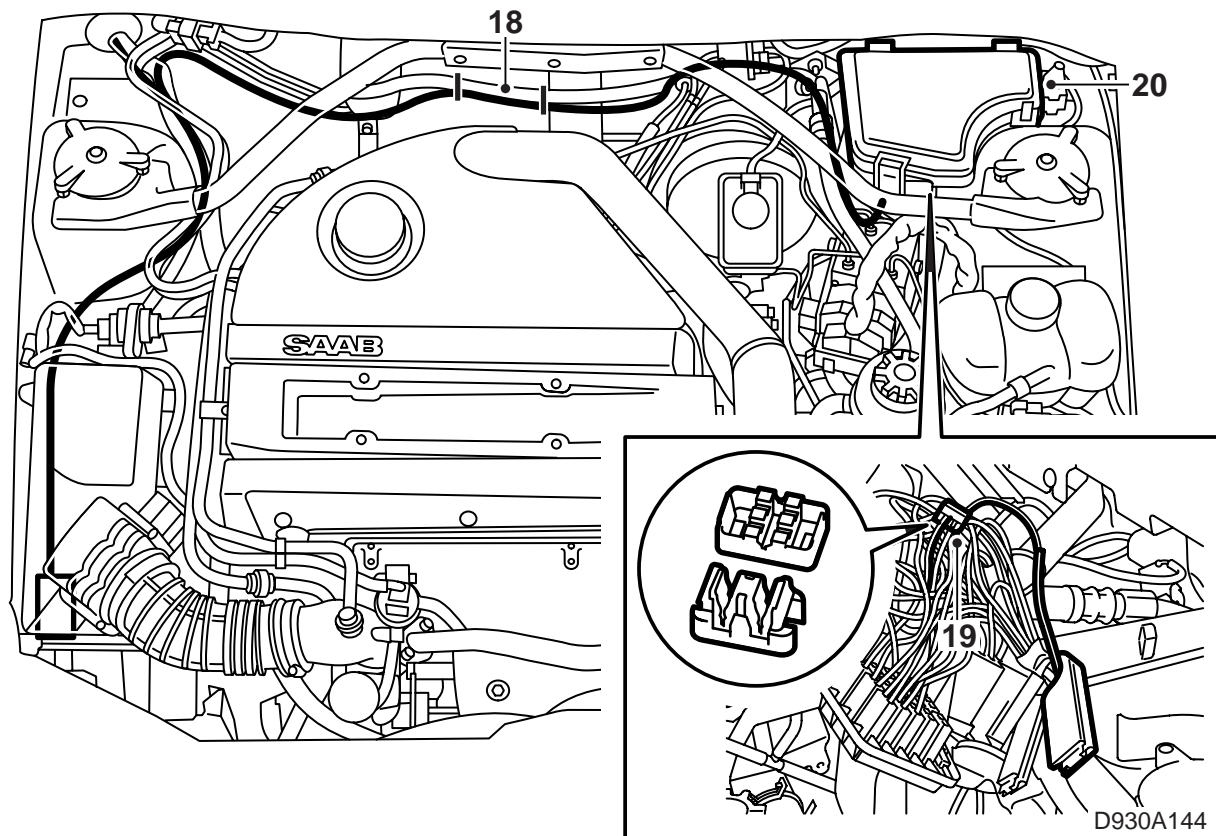


- 7 Remove the tape and fixing arrangement at the bulkhead grommet.
- 8 Withdraw the SID unit and radio. Unplug the SID unit.
- 9 Remove the glove box and air duct to the right-hand dashboard side air vent and bend aside the insulating mat.
- 10 Insert the black cable through the bulkhead grommet and run it alongside the car's wiring harness to the centre console. Any branch lead should be passed through at the same time.
- 11 Attach the cable to the car's wiring harness.
- 12 Seal the grommet with Teroson T242 (part no. 30 15 781) or an equivalent sealant so that water cannot follow the electric leads into the cabin interior.
- 13 Fit a cable tie round the grommet and seal with tape.
- 14 Fit the connector pin on the black cable and insert it at position 20 in the SID unit connector.
- 15 Check that the lead runs clear of sharp edges and attach it to the wiring harness up to the centre console.
- 16 Plug in the SID unit and refit it and the radio.
- 17 Refit the air duct and glove box.

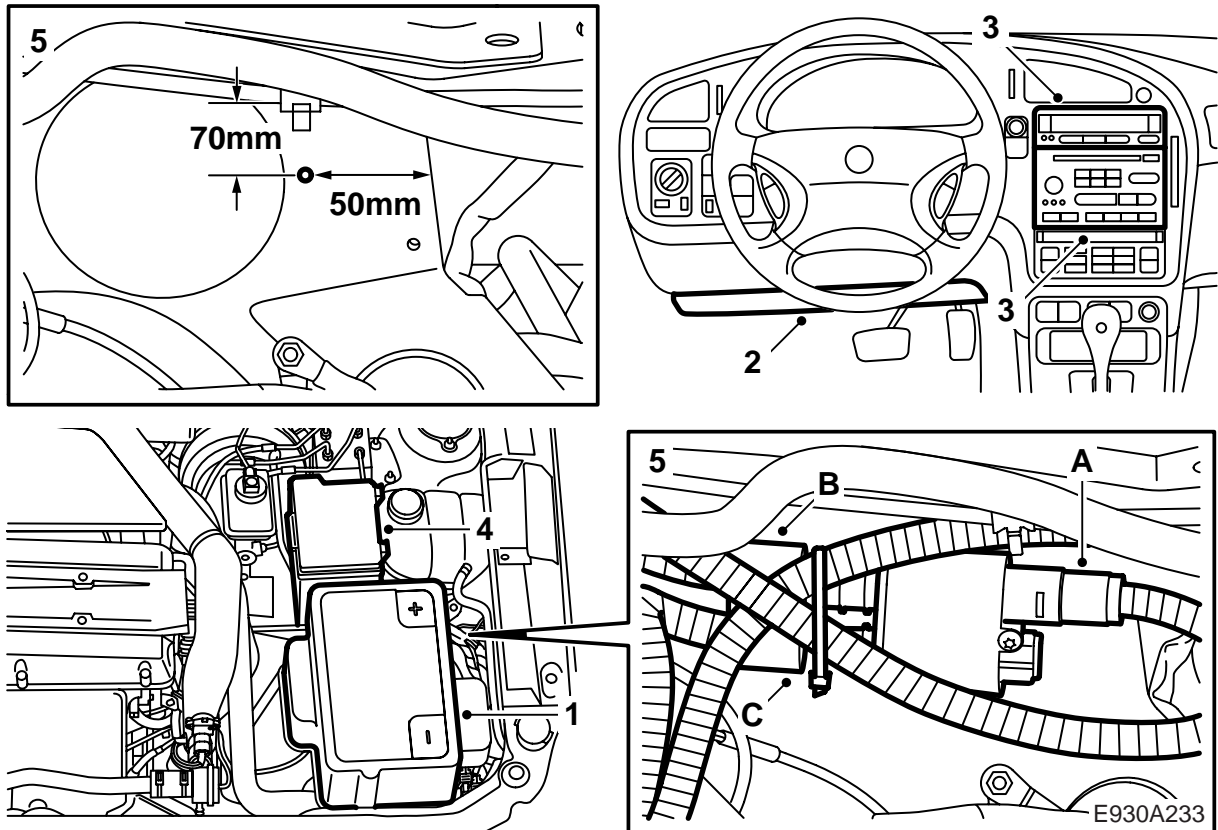
### Note

The use of a soap solution will make this easier.

- 11 Attach the cable to the car's wiring harness.
- 12 Seal the grommet with Teroson T242 (part no. 30 15 781) or an equivalent sealant so that water cannot follow the electric leads into the cabin interior.
- 13 Fit a cable tie round the grommet and seal with tape.
- 14 Fit the connector pin on the black cable and insert it at position 20 in the SID unit connector.
- 15 Check that the lead runs clear of sharp edges and attach it to the wiring harness up to the centre console.



- 18 Run the red lead of the wiring harness alongside the car's regular wiring harness and into the electrical distribution box to fuse no. 5. Cut the lead to a suitable length.
- 19 By means of the distribution block, connect the red lead to the red lead from fuse no. 5.
- 20 Refit the relay/fuse holder and attach the cable at the grommet in the electrical distribution box and to the car's wiring harness along the bulkhead partition.
- 21 Make sure that no cables in the engine bay are positioned against hot or sharp components. Secure the cables as necessary.
- 22 Fit the air cleaner.
- 23 Fit the battery back in place and connect its cables.
- 24 Connect the diagnostic tool and select SID, "Programming", "Parking heater type", "Electrically operated", "Activating Parking heater" and "Activated only by Timer".
- 25 Correct the SID unit clock and test the start and stop functions in accordance with the user instructions in the Owner's Manual.



### Saab 9-5

The timer function is to be controlled by the SID unit, which must be programmed with TECH2.

#### **WARNING**

It is important to lubricate the connection cable O-rings before attachment. All connections must be pressed together hard. If the protective cap is to be fitted, the connection must not be lubricated.

- 1 Disconnect and lift out the battery and remove the battery shelf.
- 2 Remove the acoustic insulating material under the left-hand side of the dashboard.
- 3 **-M05:** Withdraw the SID unit and radio. Unplug the SID unit.
- 4 Detach the relay/fuse holder and lift it out of the electrical distribution box in the engine bay.
- 5 **If the car has been fitted with a branching kit:** Remove the branch contact and connect the timer relay. Fit the relay in the mounting hole of the branch contact.

**If the car is not fitted with a branching kit:** Fit the timer relay as follows:

- Connect the intake contact to the timer relay (A).
- Mark the position of the holes using the measurements in the illustration and drill a 3.5 mm hole.

- Deburr the hole and remove loose swarf and flakes of paint. Clean with Teroson FL cleaner. Apply Standox 1K Füllprimer. Apply finish paint. Use Terotex HV400 or Mercasol 1 on inside surfaces.

- Attach all relevant connection cables to the timer relay as follows:

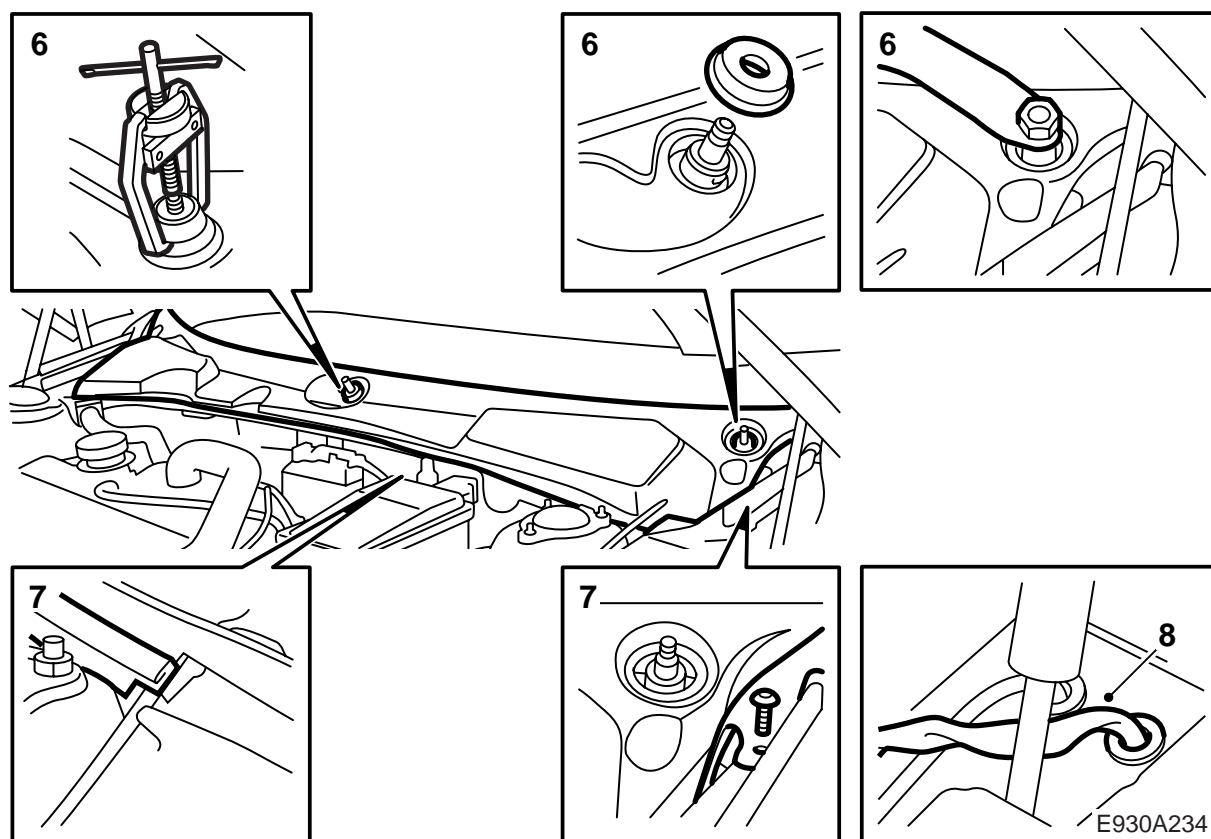
**Engine heater only:** Connect the engine heater cable to socket C and fit the protective cap over socket B.

#### **WARNING**

Check that the connection where the protective cap is to be fitted is clean and dry. The protective cap must be turned at least one rotation when being pressed into place.

**Engine heater and cabin socket:** Connect the engine heater cable to socket B and the cabin socket cable to socket C.

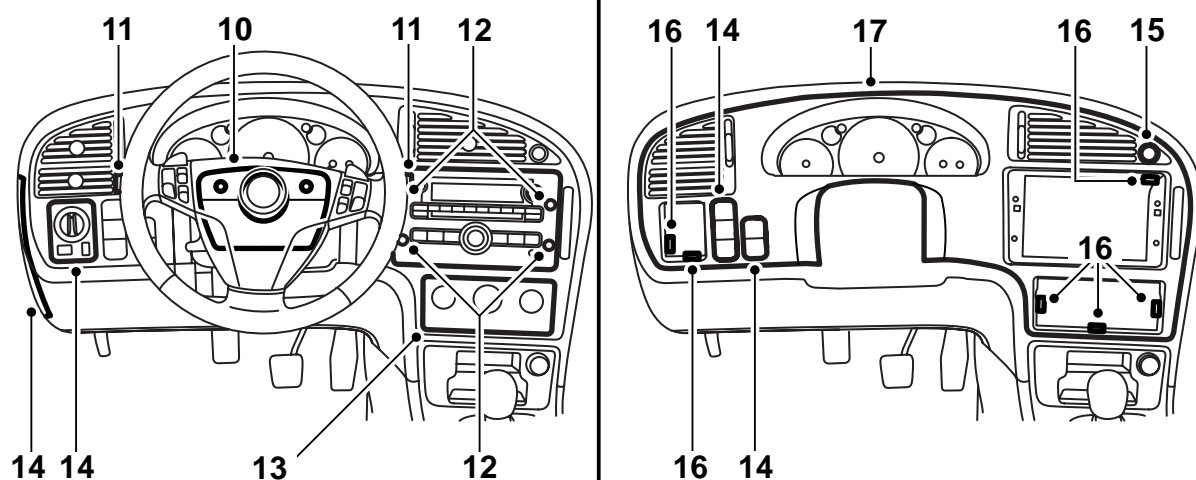
- Fit the timer relay.



- 6 Remove the windscreen wiper arms. Use puller 85 80 144.
- 7 Remove the bonnet weatherstrip and cover panel over the bulkhead partition space.
- 8 Remove the plug to the left of the bonnet lock wire's grommet. Move the black cable along the bonnet lock wire into the bulkhead area. Fit the rubber grommet and insert the cable through the grommet into the centre bracket. Press the grommet into place and seal with Teroson T242 (part no. 30 15 781) or a similar sealant.

**-M05:** Continue with step 36.

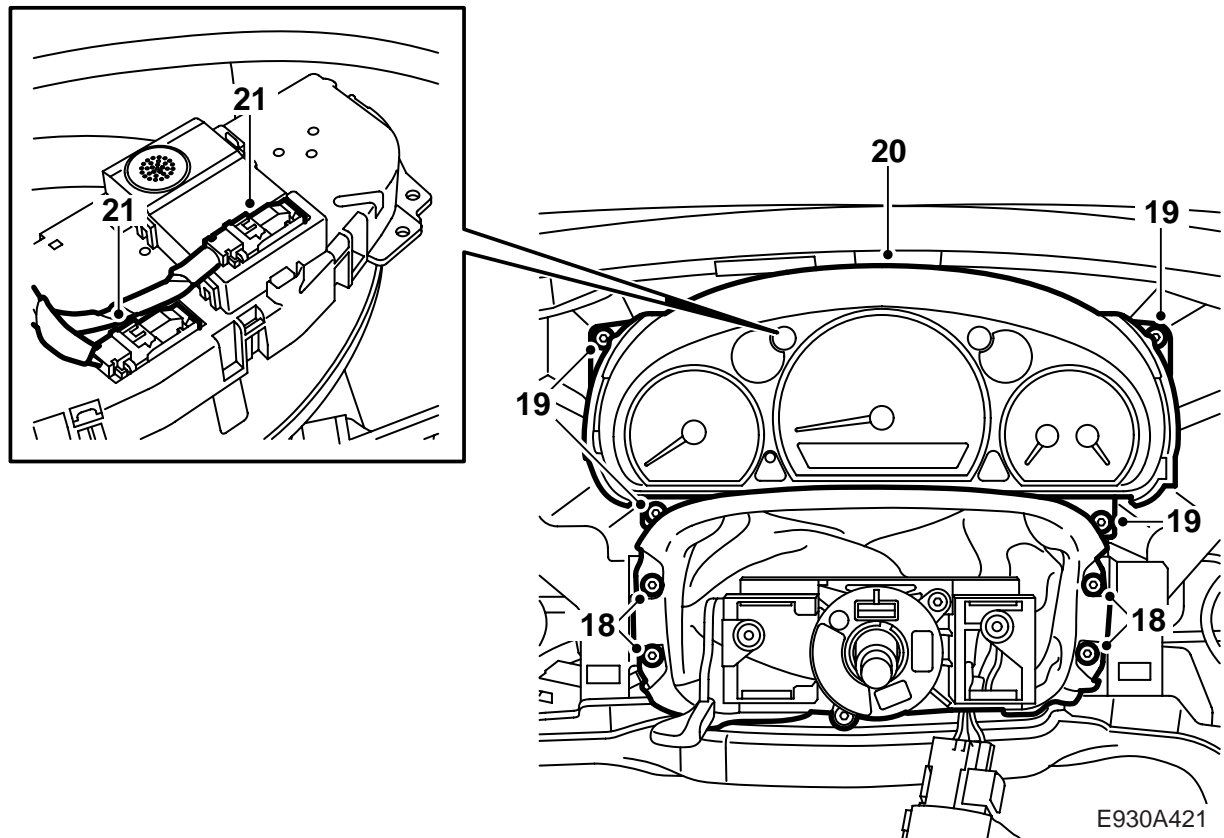
**M06-:** Continue with step 9.



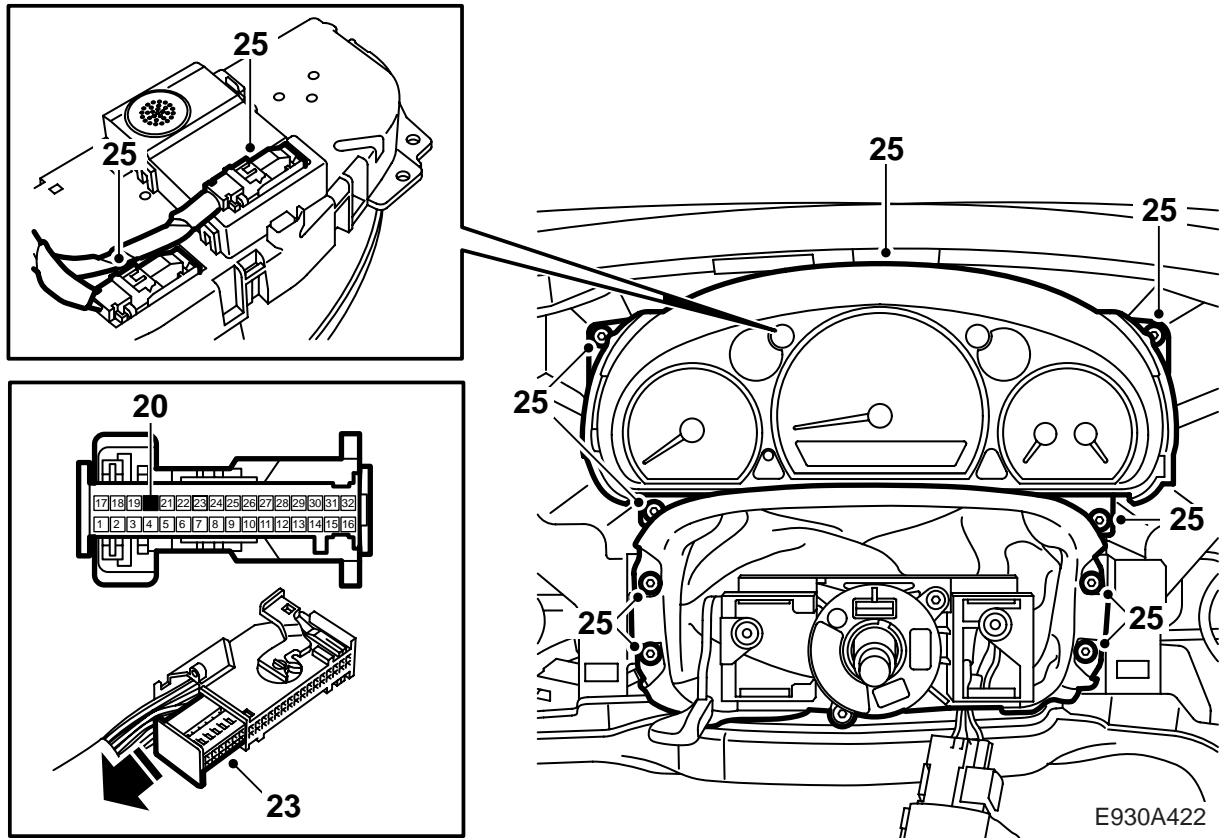
E930A420

- 9 **M06-**: Pull the steering wheel out and down and lock it.
- 10 **M06-**: Remove the upper and lower steering column cowls, three screws.
- 11 **M06-**: Detach the switches for the direction indicators and windscreen wipers.
- 12 **M06-**: Remove the covers and audio unit, four screws.
- 13 **M06-**: Remove the heating and ventilation panel and detach the connector.
- 14 **M06-**: Remove the cover over the fuse holder on the side of the panel. Detach the light switch and other switches as well as their connectors.
- 15 **M06-**: Detach the switch for the hazard warning lights and the connector.
- 16 **M06-**: Remove the instrument plate, secured with six screws and four clips.
- 17 **M06-**: Lift away the instrument plate.

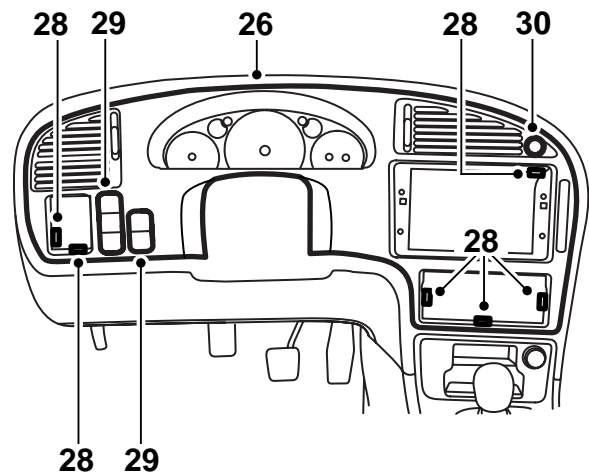
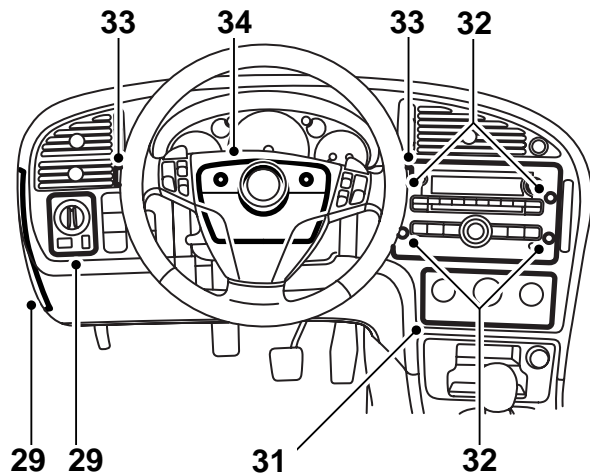




- 18 **M06-**: Remove the screws for the steering column gaiter.
- 19 **M06-**: Remove the screws for the main instrument unit.
- 20 **M06-**: Lift the main instrument unit away.
- 21 **M06-**: Unplug the connector.



- 22 **M06-**: Route the black (BK) cable from the centre console to the SID unit and fasten it so as to avoid risk of pinching.
- 23 **M06-**: Carefully slide apart the upper and lower sections of the connectors.
- 24 **M06-**: Fit the cable terminal to the kit's black cable and fit it in position 20 in the SID unit connector. Press the upper and lower sections of the connectors together.
- 25 **M06-**: Fit the main instrument unit.



E930A423

26 **M06-**: Lift the instrument plate into place.

27 **M06-**: From the driver's side, check that the air ducts are positioned correctly.

### Note

Make sure that no connectors or cables are trapped or pinched.

28 **M06-**: Fit the instrument plate, secured with six screws and four clips.

29 **M06-**: Connect and fit the light switch and the other switches.

Refit the cover over the fuse holder on the side of the panel.

30 **M06-**: Fit the switch for the hazard warning lights and plug in the connector from behind.

### Note

A mark on the hazard flasher switch shows which side is up.

31 **M06-**: Connect and fit the heating and ventilation panel.

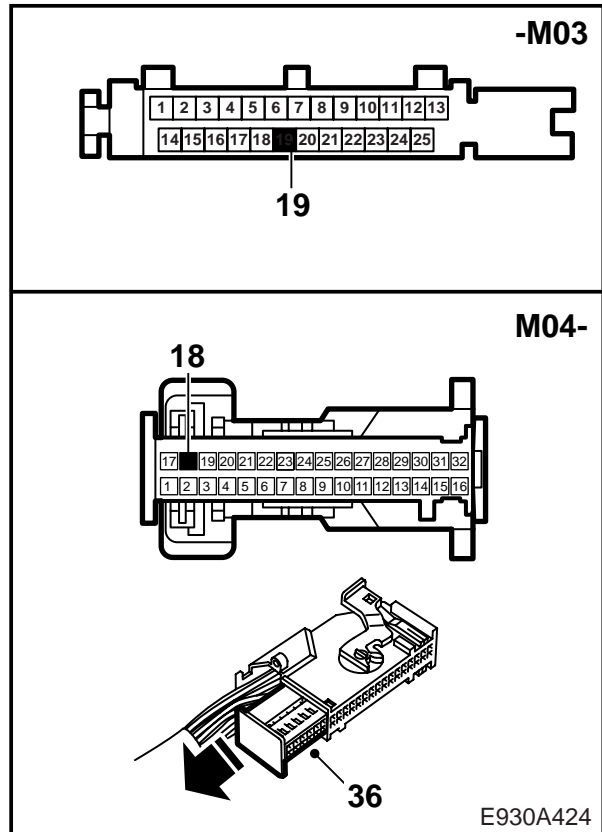
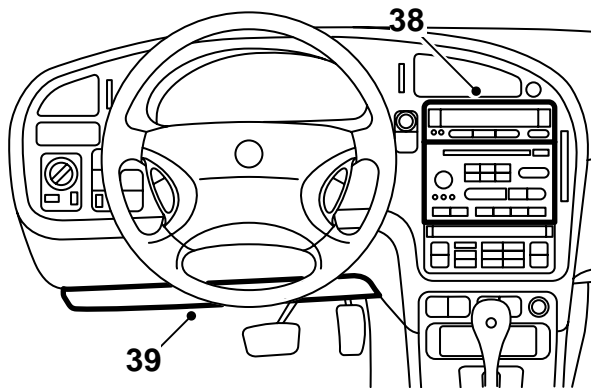
32 **M06-**: Fit the audio unit and the covers.

33 **M06-**: Refit the direction indicator and wind-screen wiper stalk switch.

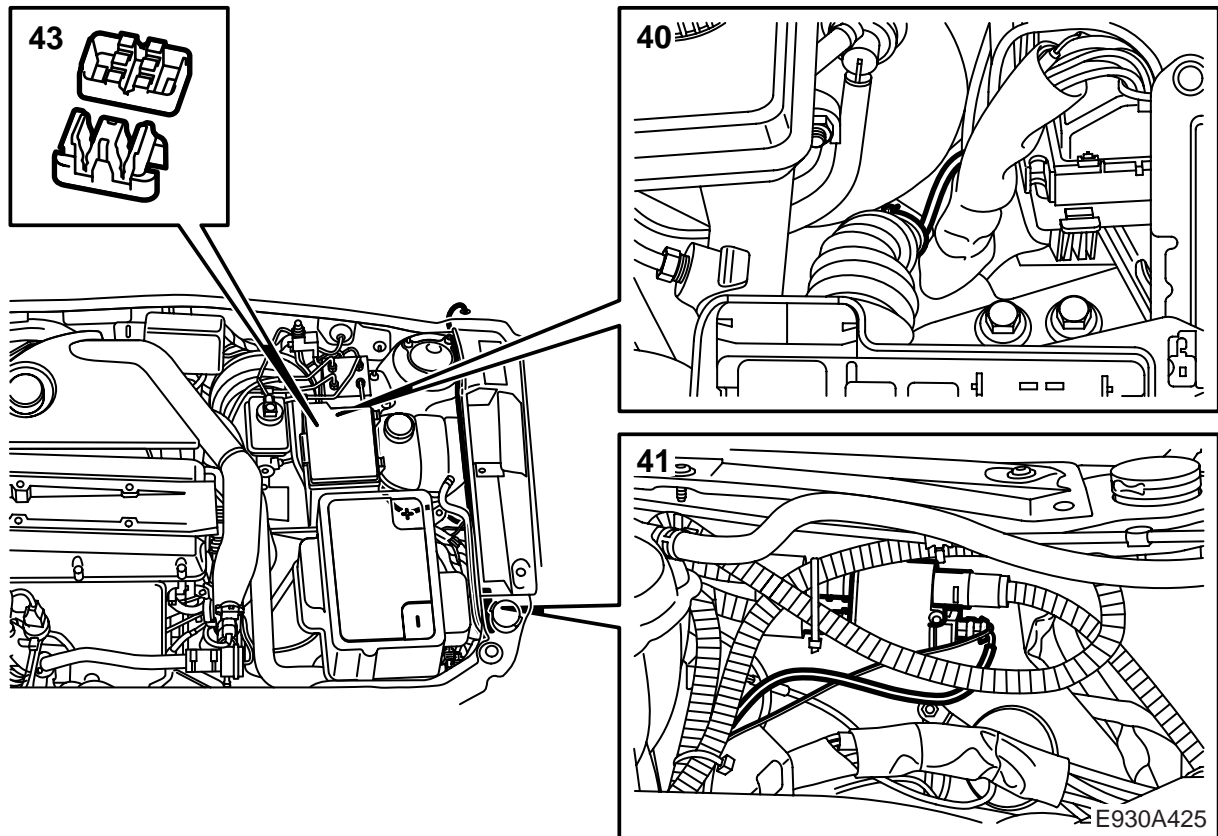
34 **M06-**: Fit the upper and lower steering column cowls.

35 **M06-**: Affix the cables in place under the dashboard so that they run clear of moving parts and cannot give rise to rattling or other unwanted noise.

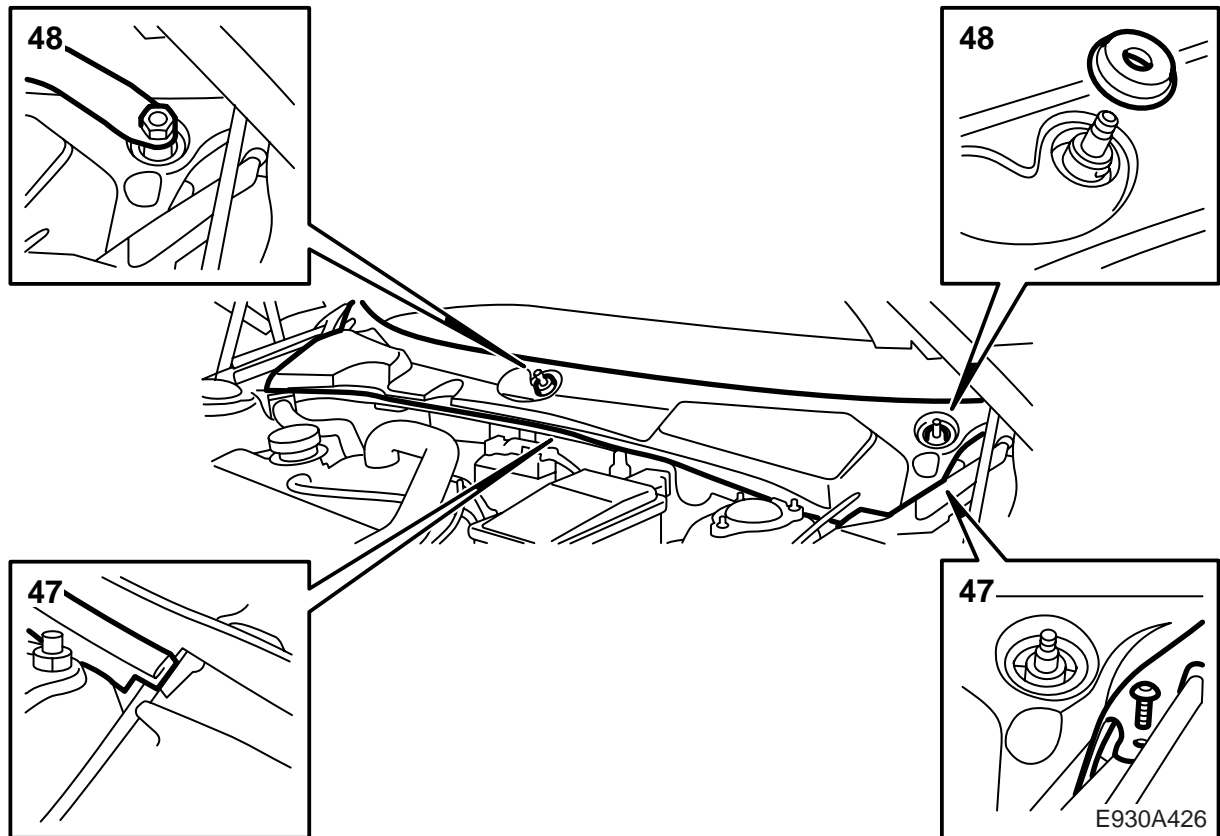
Continue with step 39.



- 36 **-M05:** Carefully slide apart the upper and lower sections of the connector to the SID unit, fit the connector pin to the kit's black cable and fit it in position 19 (-M03) or position 18 (M04-05). Press the sections of the connector together.
- 37 **-M05:** Check that the lead runs clear of sharp edges and attach it to the wiring harness up to the SID unit.
- 38 **-M05:** Plug in the SID unit, and refit it and the radio.
- 39 Refit the acoustic insulating material under the left-hand side of the dashboard.



- 40 Remove the tape and the cable tie from the rubber bellows over the wiring harness at the electrical distribution box of the engine bay.
- 41 Connect the 2-pin connector to the timer relay.
- 42 Run the red lead of the wiring harness alongside the car's regular wiring harness and into the electrical distribution box to fuse no. 17. Cut the lead to a suitable length.
- 43 Use the distribution block to connect the red cable to the fused cable from fuse 17. Fit a new cable tie and new tape around the rubber bellows.
- 44 Refit the relay/fuse holder and fix the cable at the electrical distribution box.
- 45 Make sure that no cables in the engine bay are positioned against hot or sharp components. Secure the cables as necessary.
- 46 Mount the battery shelf and fit and connect the battery.



- 47 Refit the cover panel over the bulkhead partition space and the bonnet weatherstrip.
- 48 Fit the windscreen wiper arms.
- 49 Connect the diagnostic tool and select SID, "Programming", "Parking heater type", "Electrically operated", "Activating Parking heater" and "Activated only by Timer".
- 50 Correct the SID unit clock and test the start and stop functions in accordance with the user instructions in the Owner's Manual.