



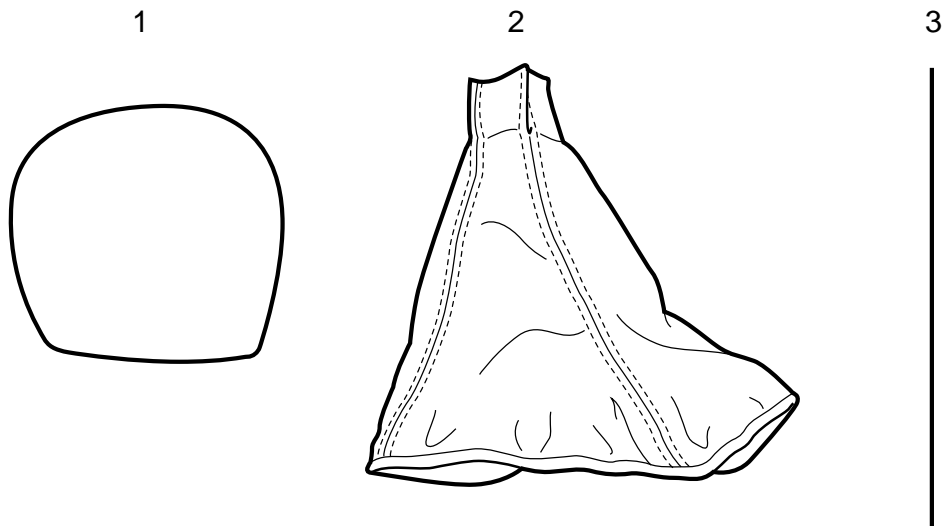
SAAB

**MONTERINGSANVISNING · INSTALLATION INSTRUCTIONS
MONTAGEANLEITUNG · INSTALLATIONS DE MONTAGE**

Saab 9-5

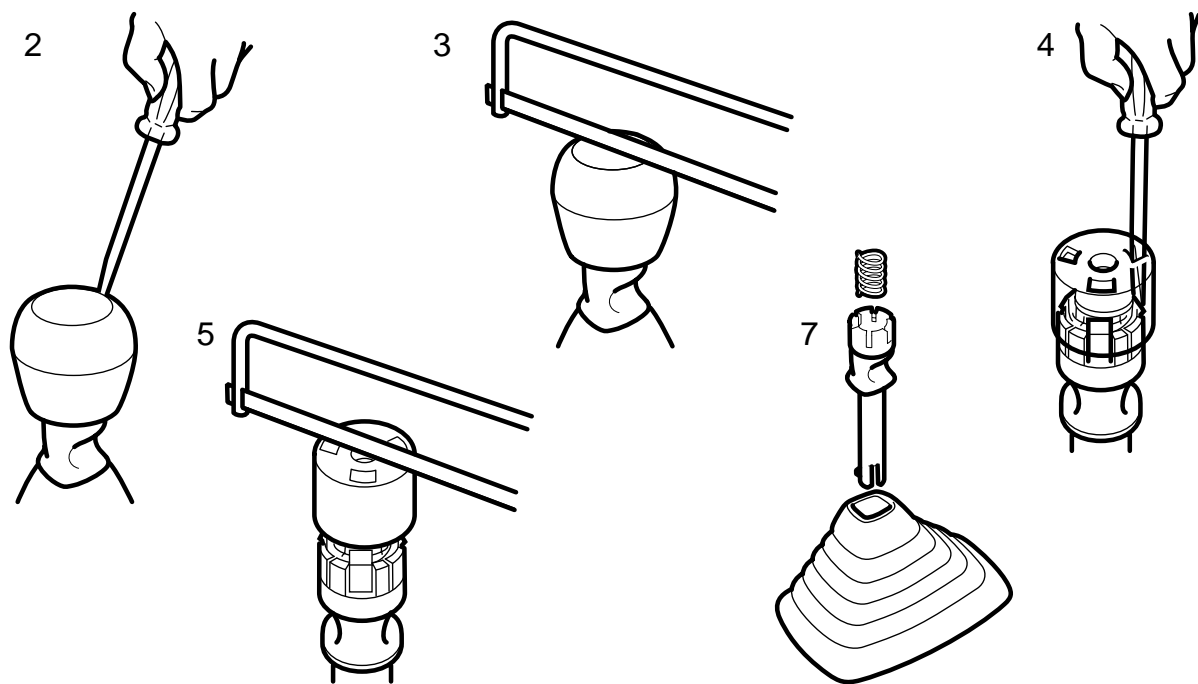
Wood/Leather gearlever knob and leather gaiter

Accessories Part No.	Group	Date	Instruction Part No.	Replaces
400 107 108 400 107 124	9:43-1	July 96	47 77 041	



E471A001

- 1 Gearlever knob
- 2 Gaiter
- 3 Securing wire (metal)



E471A002

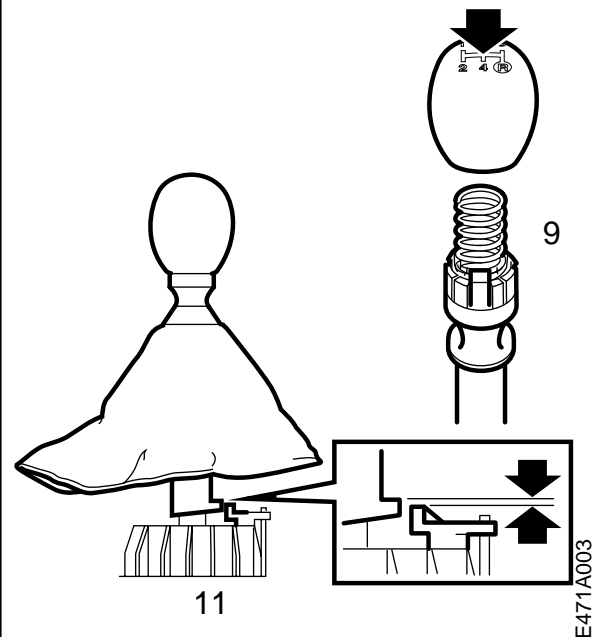
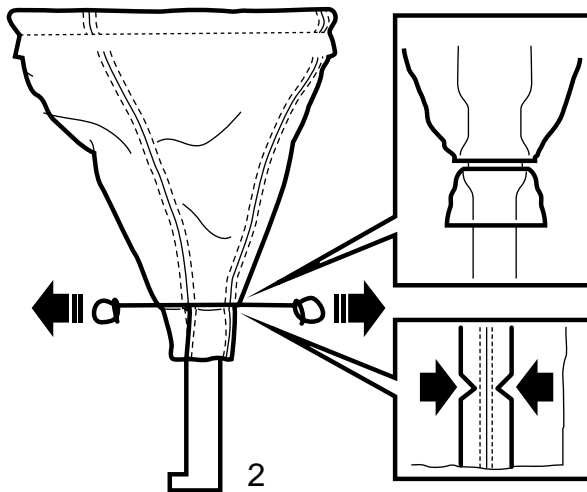
Removal

- 1 Put the gear lever in neutral.
- 2 Remove the emblem.
- 3 Saw a slit in the original knob and remove the black outer plastic casing.
- 4 Remove the tape so that the three snap fasteners for the reverse lock actuator can be released.
- 5 Split the white plastic core with a hacksaw.

Important

Saw only **down to** the metal tube.

- 6 Tear off the plastic core with a pair of adjustable pliers or similar tool.
- 7 Detach the bottom of the rubber gaiter.
- 8 Detach the gaiter from the reverse gear detent's carrier.



E471A003

Fitting

- 1 Turn the leather gaiter inside out and fit it over the gear lever.
- 2 Fasten the leather gaiter to the reverse gear detent's carrier by pulling the metal wire taut round the gaiter so that it engages in the carrier's groove.
- 3 Tighten the metal wire with a pair of pliers and wrap the ends round the gaiter a few turns. Cut off the wire about 5 mm from the gaiter and bend the ends down so that they do not damage the gaiter.
- 4 Pull the gaiter down over the gear lever.
- 5 Clean the splines on the tubular metal lever with benzine or the like.
- 6 Check that the spring is fitted.
- 7 Apply two-component epoxy adhesive to the gearlever knob. NOTE: make sure that the adhesive covers the inside surface of the knob.
- 8 Fit the knob on the splines and rotate it to distribute the adhesive evenly.
- 9 Check that the figure "4" on the knob faces to the rear, see illustration.
- 10 Press the reverse gear detent's carrier upwards so that the three catches engage with the knob.
- 11 Raise the gaiter slightly and press the knob down over the splines until the carrier's stop is a maximum of 0-0.5 mm above the reverse gear detent's stop lug.
- 12 Fasten the gaiter to the frame in the centre console.
- 13 Leave the adhesive to harden.
- 14 Place the fitting instructions in the car.